

Workshop workstreams

LEG regional training workshop on national adaptation plans (NAPs) for for African Lusophone and island States

7 – 11 September 2015, Antananarivo, Madagascar



- The activities and steps of the process to formulate and implement NAPs can be clustered into workstreams that would be managed by different stakeholders;
- Together, the workstreams could form a programme that would be “the NAP process”;
- The coordinating mechanism of the NAP process would manage the relationships and flow of information between the workstreams, and sufficient authority would be delegated to leaders of each workstream to ensure the effective and efficient delivery of intended outputs and outcomes of the NAP process;
- *See pages 119 to 124 of the technical guidelines for the NAP process for sample workstreams.*

We can divide work into 6 workstreams, to correspond to some of the key actor groups for a NAP process:

- WS 1: High-level decision-making: Policy and institutional arrangements
- WS 2: Technical: Development-first systems approach to the assessment
- WS 3: Technical: Climate risks
- WS 4: Project management and planning: Implementation strategies (combined with WS6)
- WS 5: Cross-sectoral/multi-stakeholder: Appraisal and visioning
- WS 6: Multi-sectoral: Implementation

Objectives:

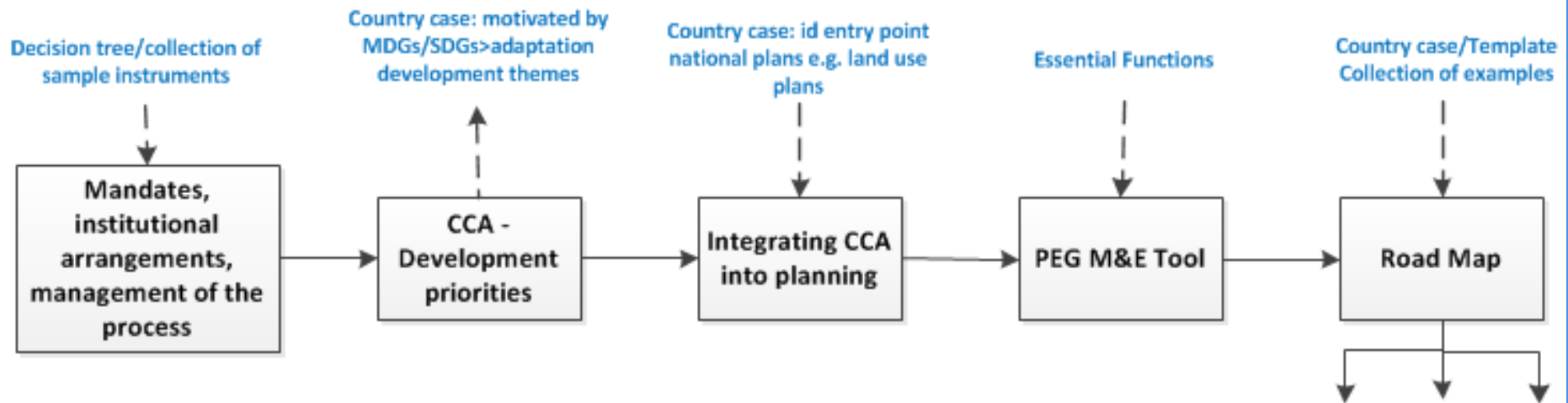
- a) To understand the workstream concept (using an example workstream)
- b) To produce a sample workstream e.g. for the next 5-10 years.
- c) To identify key elements and outputs and outcomes for the sample workstream.

Mechanics of the parallel group

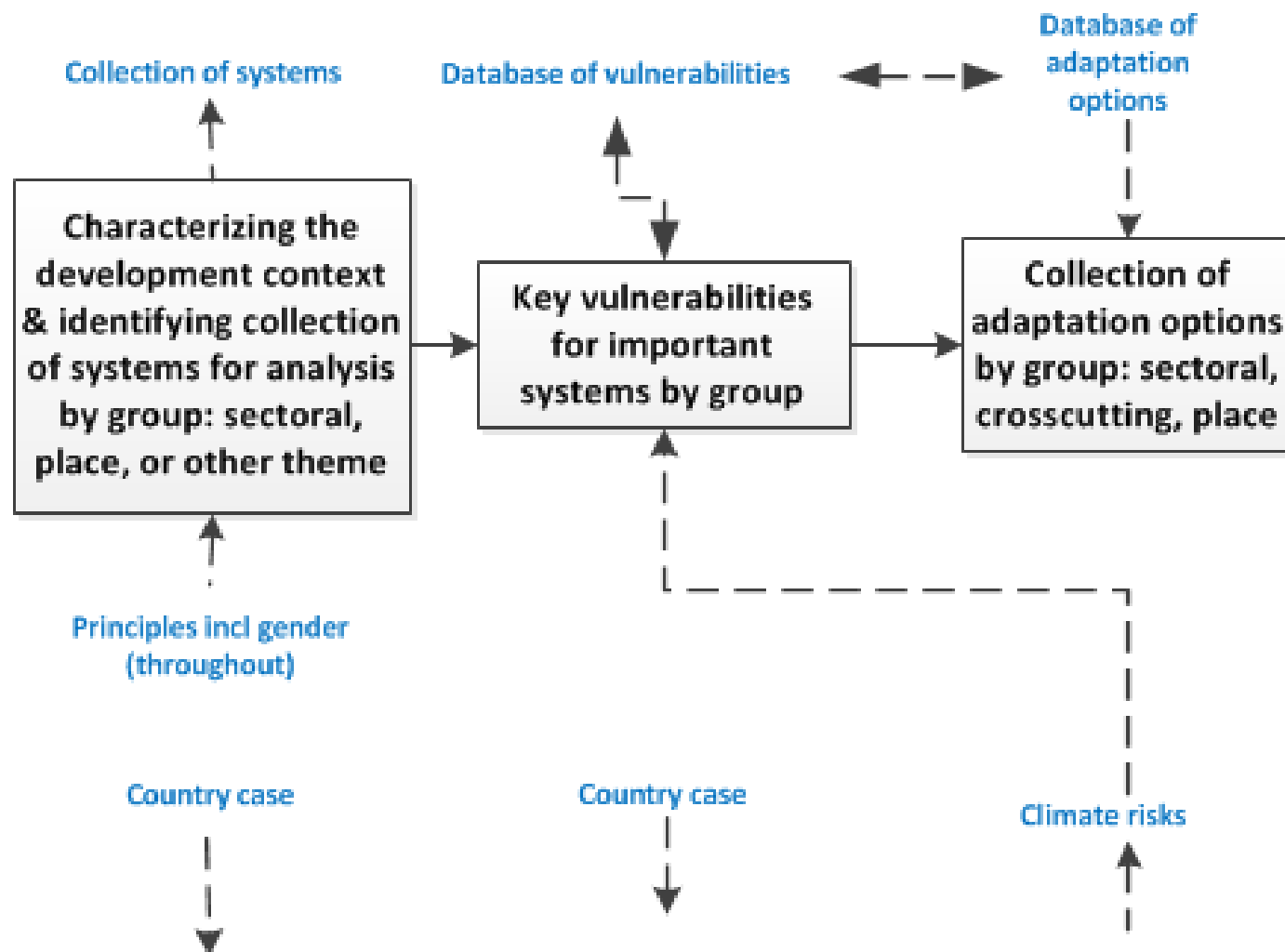
- Select a facilitator and rapporteur
- LEG Member will present the objectives and overview of the particular workstream example, addressing how it fits in the whole process
- Presentations from the LEG, practical experiences from countries and organizations during the groupwork to add examples
- The facilitator will ensure an open and interactive session to arrive at the outputs of the session
- Produce outputs listed in the objectives by focusing on the cluster of activities and steps, and also specific actors involved (*specific questions for groups tomorrow*)
- ***Note: Please agree on a schedule to complete the work within the time allocated***

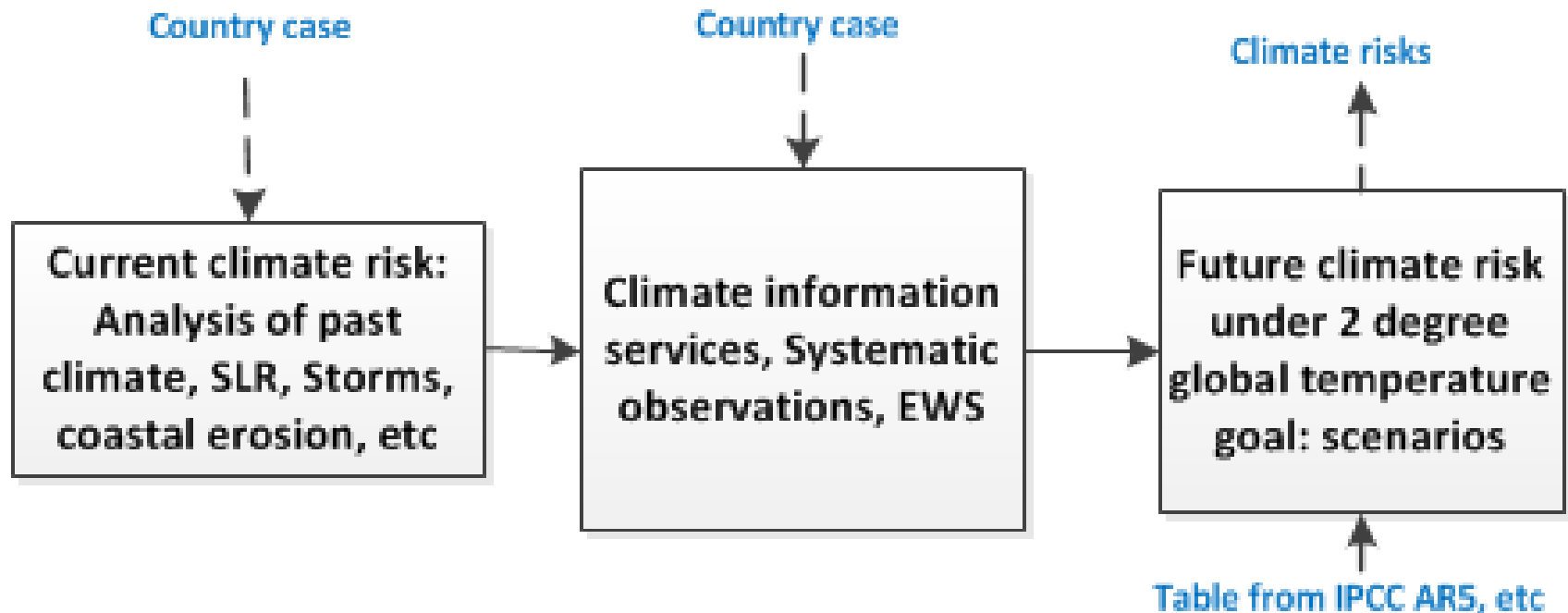


WS 1: Policy and institutional arrangements

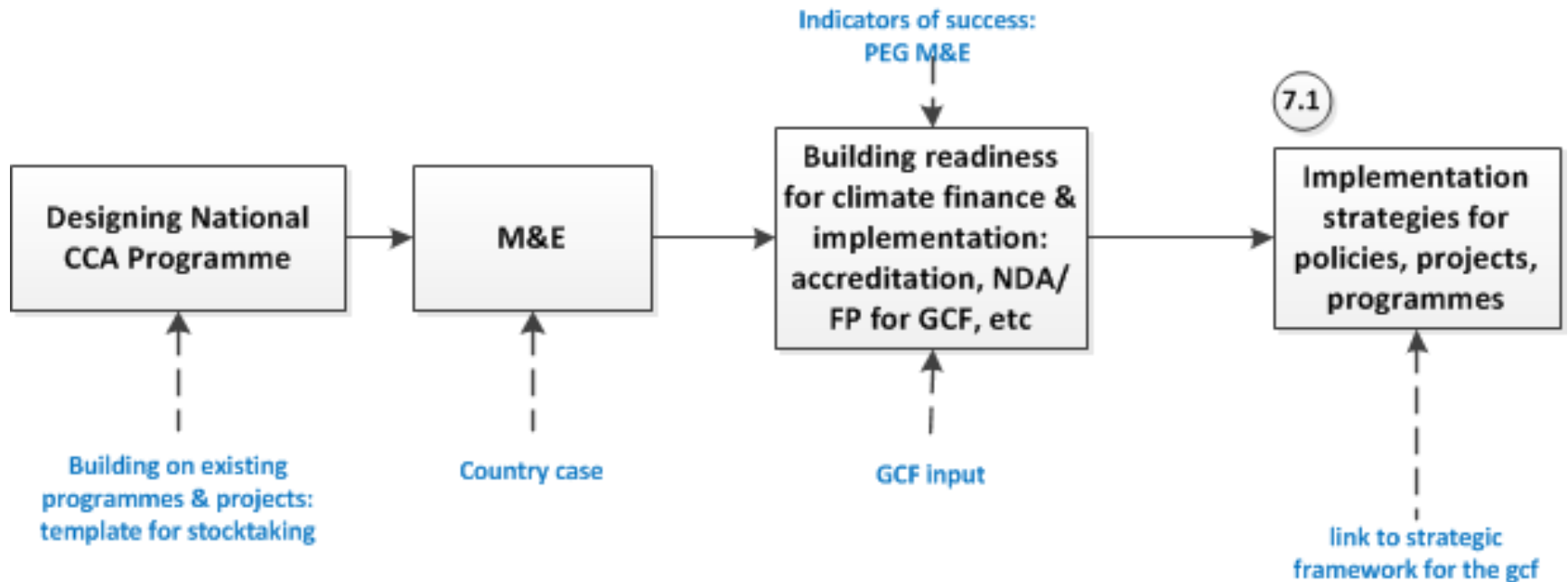


WS 2: Development-first systems approach to the assessment

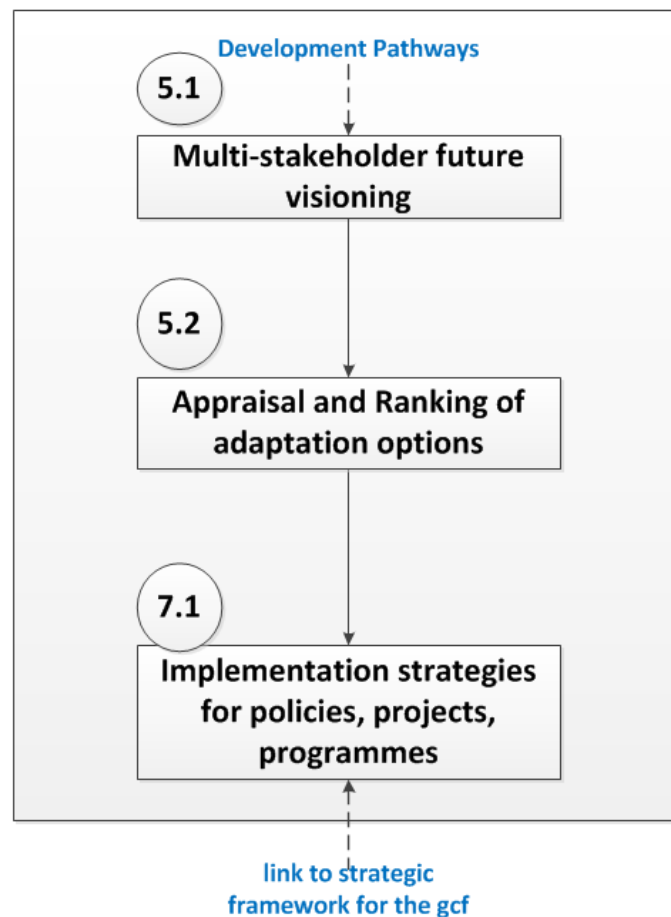


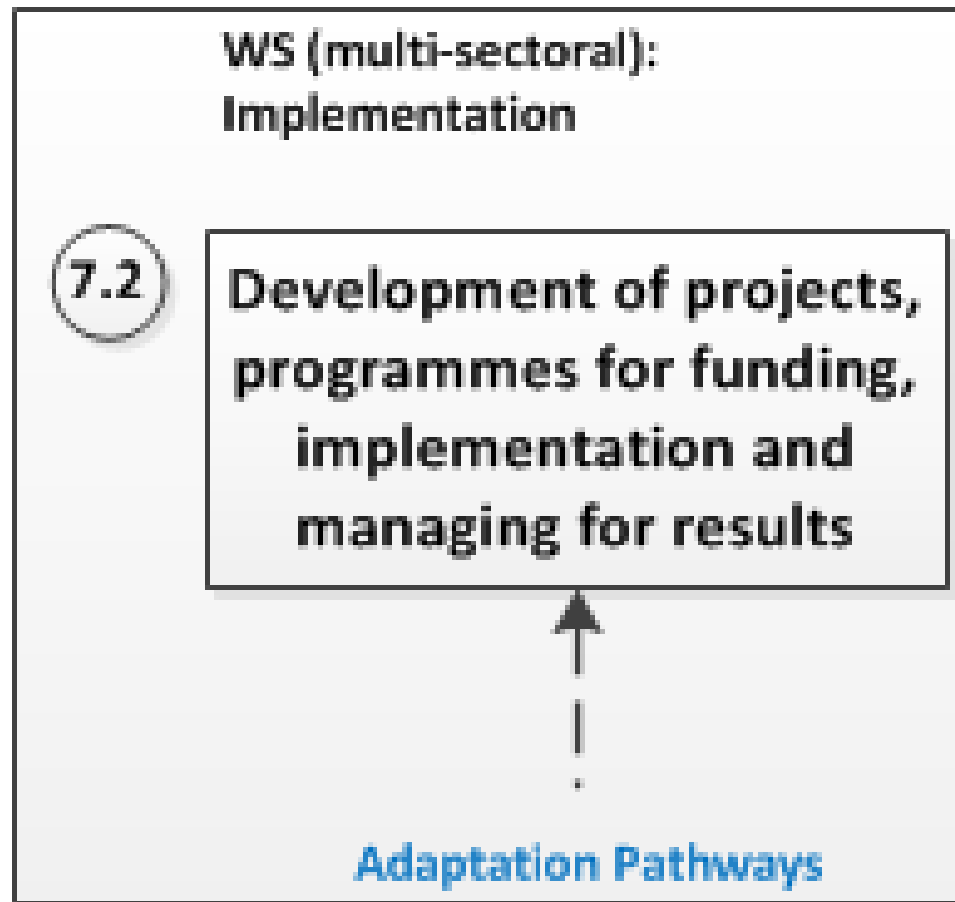


WS 4: Project management: Planning and implementation strategies



WS (cross-sectoral/multi-stakeholder): Appraisal and Visioning





Approach for the workstreams in this workshop

- Four parallel groups to work on Tuesday on WSs 1-4 and WS 6 (together with WS 4)
- Report back Wednesday morning
- WS 5 to be addressed in plenary jointly on Wednesday morning after reporting on WS 1-4, 6



Contact:

The Chair

Least Developed Countries Expert Group (LEG)

leghelp@unfccc.int

