

**EXECUTIVE COMMITTEE OF THE  
WARSAW INTERNATIONAL MECHANISM  
FOR LOSS AND DAMAGE**

# Task Force on Displacement

First meeting of the Task Force

18–19 May 2017

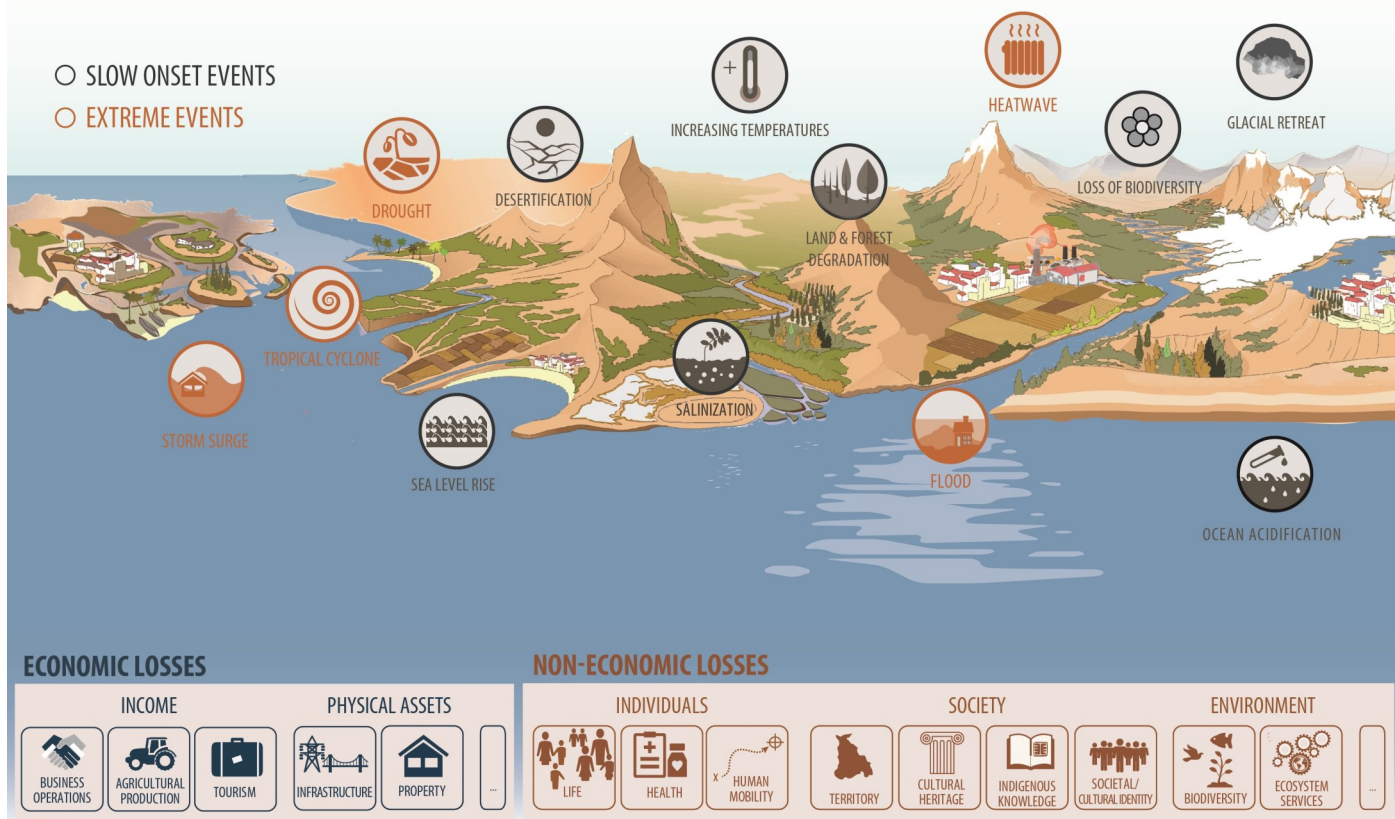
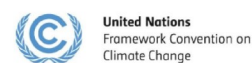
Bonn, Germany

# What you will find in this handbook

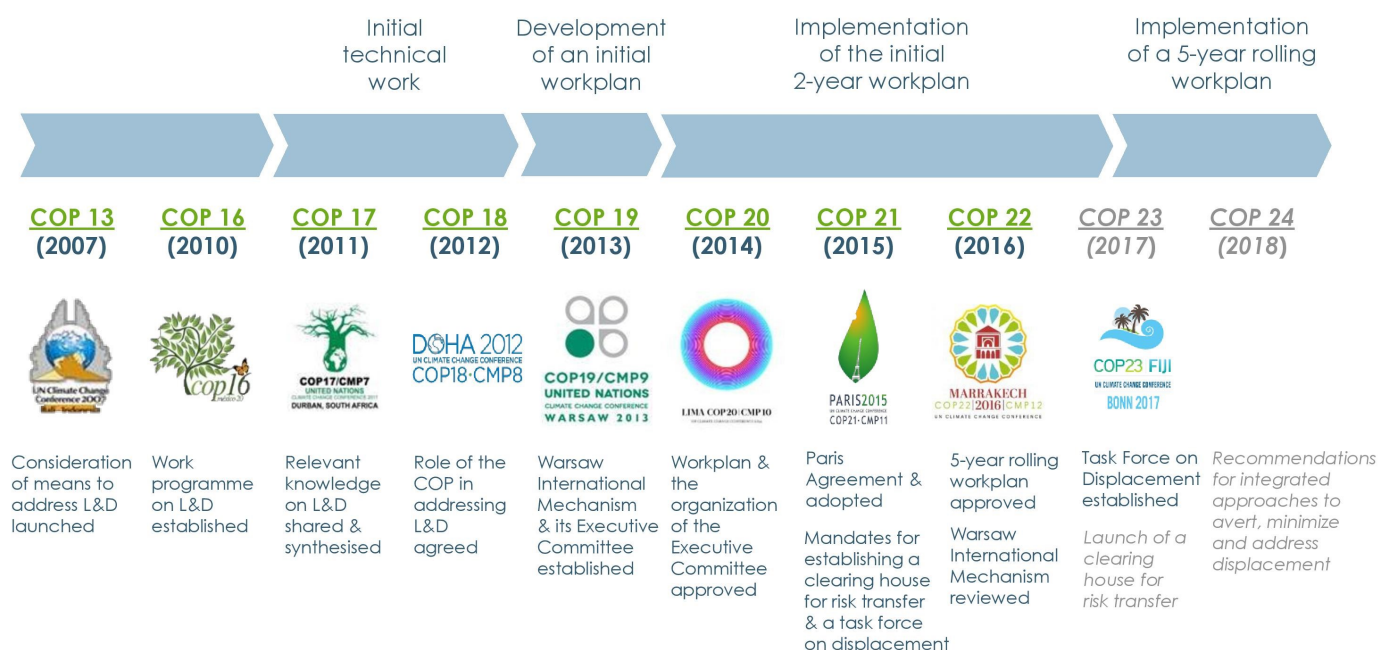
Milestones of loss and damage under the UNFCCC .....	<b>3</b>
The Warsaw International Mechanism and its Executive Committee .....	<b>4</b>
The Paris Agreement and accompanying decision .....	<b>5</b>
Milestones and the scope of the Task Force .....	<b>6</b>
Who's Who .....	<b>7</b>
Terms of Reference of the Task Force .....	<b>8</b>

# Milestones of loss and damage under the UNFCCC

## LOSS AND DAMAGE ASSOCIATED WITH THE IMPACTS OF CLIMATE CHANGE



## Milestones



# The Warsaw International Mechanism and its Executive Committee

## WARSAW INTERNATIONAL MECHANISM FOR LOSS & DAMAGE

The Warsaw International Mechanism is the main vehicle under the Convention to address loss and damage associated with climate change impacts in developing countries that are particularly vulnerable to the adverse effects of climate change, in a comprehensive, integrated and coherent manner.

## EXECUTIVE COMMITTEE OF THE WARSAW INTERNATIONAL MECHANISM

The Executive Committee (Excom) guides the implementation of the functions of the Warsaw International Mechanism for Loss and Damage through its workplan. The Excom comprises 20 members from Parties to the Convention.

### FUNCTIONS OF THE MECHANISM



### TECHNICAL ARMS OF THE EXECUTIVE COMMITTEE

EXPERT GROUP ON NON-ECONOMIC LOSSES	TASK FORCE ON DISPLACEMENT	TECHNICAL EXPERT GROUP ON COMPREHENSIVE RISK MANAGEMENT AND TRANSFORMATIONAL APPROACHES
Develop inputs and recommendations to enhance data on and knowledge of reducing the risk of and addressing non-economic losses	Develop recommendations for integrated approaches to avert, minimize and address displacement associated with the adverse effects of climate change	Provide technical support and guidance on comprehensive risk management and transformational approaches

# The Paris Agreement and accompanying decision<sup>1</sup>

## Article 8 of the Paris Agreement

1. Parties recognize the importance of averting, minimizing and addressing loss and damage associated with the adverse effects of climate change, including extreme weather events and slow onset events, and the role of sustainable development in reducing the risk of loss and damage.
2. The Warsaw International Mechanism for Loss and Damage associated with Climate Change Impacts shall be subject to the authority and guidance of the Conference of the Parties serving as the meeting of the Parties to this Agreement and may be enhanced and strengthened, as determined by the Conference of the Parties serving as the meeting of the Parties to this Agreement.
3. Parties should enhance understanding, action and support, including through the Warsaw International Mechanism, as appropriate, on a cooperative and facilitative basis with respect to loss and damage associated with the adverse effects of climate change.
4. Accordingly, areas of cooperation and facilitation to enhance understanding, action and support may include:
  - (a) Early warning systems;
  - (b) Emergency preparedness;
  - (c) Slow onset events;
  - (d) Events that may involve irreversible and permanent loss and damage;
  - (e) Comprehensive risk assessment and management;
  - (f) Risk insurance facilities, climate risk pooling and other insurance solutions;
  - (g) Non-economic losses;
  - (h) Resilience of communities, livelihoods and ecosystems.
5. The Warsaw International Mechanism shall collaborate with existing bodies and expert groups under the Agreement, as well as relevant organizations and expert bodies outside the Agreement.

## Paragraphs 47–51 (Loss and Damage) of Decision 1/CP.21

*(The COP,)*

47. Decides on the continuation of the Warsaw International Mechanism for Loss and Damage associated with Climate Change Impacts, following the review in 2016;
48. Requests the Executive Committee of the Warsaw International Mechanism to establish a clearing house for risk transfer that serves as a repository for information on insurance and risk transfer, in order to facilitate the efforts of Parties to develop and implement comprehensive risk management strategies;
49. Also requests the Executive Committee of the Warsaw International Mechanism to establish, according to its procedures and mandate, a task force to complement, draw upon the work of and involve, as appropriate, existing bodies and expert groups under the Convention including the Adaptation Committee and the Least Developed Countries Expert Group, as well as relevant organizations and expert bodies outside the Convention, to develop recommendations for integrated approaches to avert, minimize and address displacement related to the adverse impacts of climate change;
50. Further requests the Executive Committee of the Warsaw International Mechanism to initiate its work, at its next meeting, to operationalize the provisions referred to in paragraphs 48 and 49 above, and to report on progress hereon in its annual report;
51. Agrees that Article 8 of the Agreement does not involve or provide a basis for any liability or compensation;

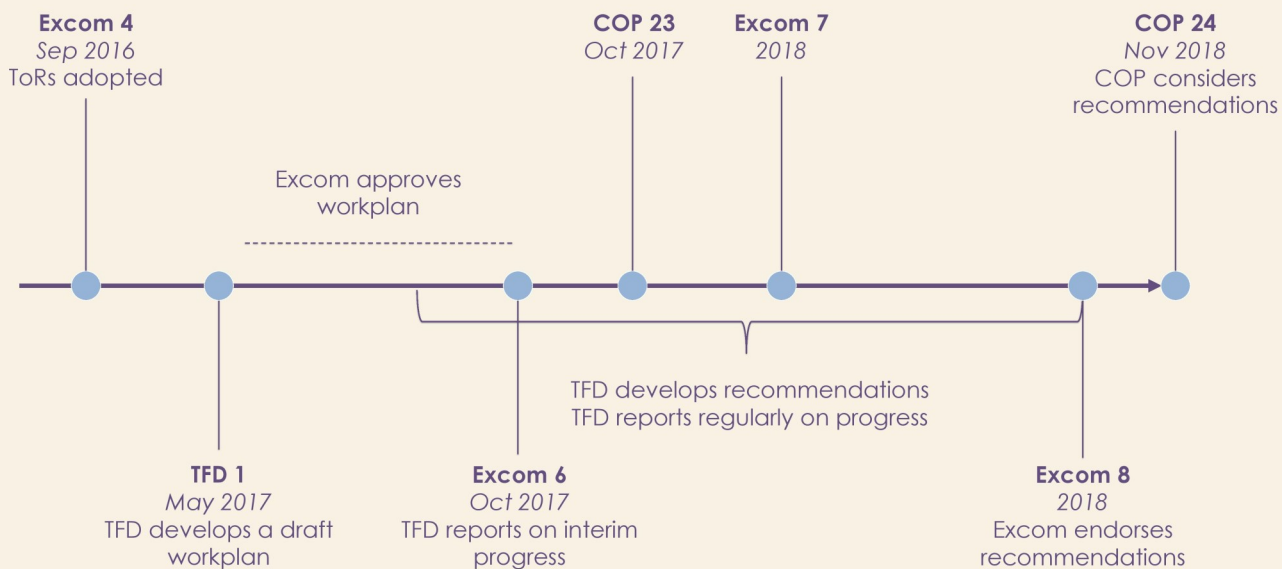
<sup>1</sup> FCCC/CP/2015/10/Add.1, available at <http://unfccc.int/resource/docs/2015/cop21/eng/10a01.pdf>.

# Milestones and the scope of the Task Force

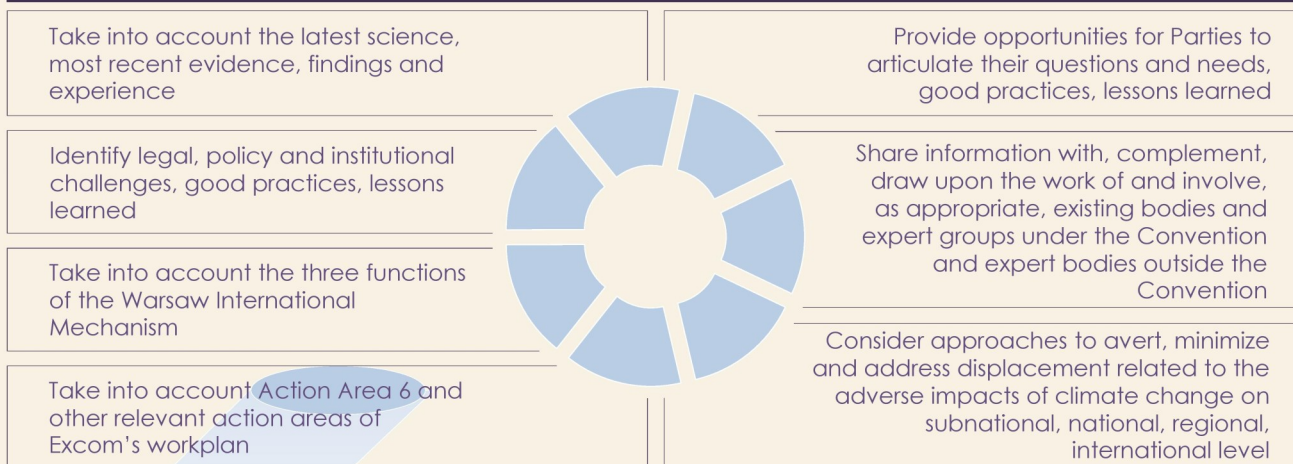
## MANDATE

Complement, draw upon the work of and involve, as appropriate, existing bodies and expert groups under the Convention including the Adaptation Committee and the LDC Expert Group, as well as relevant organizations and expert bodies outside the Convention, **to develop recommendations for integrated approaches to avert, minimize and address displacement related to the adverse impacts of climate change** (Decision 1/CP.21, paragraph 49)

## TIMELINE



## SCOPE OF WORK



## WORK OF THE EXECUTIVE COMMITTEE TO DATE

Action Area 6 of the initial two-year workplan of the Executive Committee: 'Enhance the understanding of and expertise on how the impacts of climate change are affecting patterns of migration, displacement and human mobility; and the application of such understanding and expertise'.

Excom received 69 sets of inputs from more than 30 experts and organizations on "knowledge, data and scientific information on internal and cross-border migration, displacement and other forms of human mobility"

Excom held a technical meeting on migration, displacement and human mobility, hosted by IOM in July 2016 in Casablanca, Morocco

Outputs: 3 sets of synthesis information and recommendations

## Who's Who?

Name	Affiliation and position
Ms. Keti Chachibaia	<b>United Nations Development Programme</b> <i>Regional Technical Advisor for Climate Change Adaptation</i>
Ms. Madeline Garlick	<b>United Nations High Commissioner for Refugees</b> <i>Chief, Protection Policy and Legal Advice</i>
Ms. Dina Ionesco	<b>International Organization for Migration</b> <i>Head of Division, Migration, Environment and Climate Change</i>
Ms. Michelle Leighton	<b>International Labour Organization</b> <i>Chief, Labour Migration Branch</i>
Mr. Ezekiel Simperingham	<b>International Federation of Red Cross and Red Crescent Societies</b> <i>Asia Pacific Regional Migration Coordinator</i>
Mr. Atle Solberg	<b>Platform on Disaster Displacement</b> <i>Head of the Coordination Unit</i>
Ms. Michelle Yonetani	<b>Civil society through the Advisory Group on Climate Change and Human Mobility</b> <i>Senior Strategic Advisor, Disasters</i>
Ms. María del Pilar Bueno	<b>Adaptation Committee, UNFCCC</b> <i>Member of the AC, Argentina</i>
Mr. Idrissa Semde	<b>Least Developed Countries Expert Group, UNFCCC</b> <i>Member of the LEG, Burkina Faso</i>
Ms. Cornelia Jäger	<b>WIM Executive Committee, UNFCCC</b> <i>Member of the Excom, Austria</i>
Ms. Pepetua Election Latasi	<b>WIM Executive Committee, UNFCCC</b> <i>Member of the Excom, Tuvalu</i>
Mr. Russell Miles	<b>WIM Executive Committee, UNFCCC</b> <i>Member of the Excom, Australia</i>
Mr. Idy Niang	<b>WIM Executive Committee, UNFCCC</b> <i>Member of the Excom, Senegal</i>
<i>tbd</i>	<i>UNFCCC NGO constituency 'Local Governments and Municipal Authorities (LGMA)'</i>

Co-chairs of the WIM Executive Committee:  
**Ms. Monika Antosik and Mr. Orville Grey**

Secretariat support team:

Koko Warner

Miwa Kato

Petya Pishmisheva

Carolina Mantsch, logistics

Generic queries from public can be sent to: [<displacement@unfccc.int>](mailto:displacement@unfccc.int)

Task Force on Displacement webpage: [www.unfccc.int/9978](http://www.unfccc.int/9978)

# Terms of Reference of the Task Force

## Terms of References of the Task Force on Displacement

### I. Background

1. The Conference of the Parties (COP), at its nineteenth session, established:
  - (a) The Warsaw International Mechanism for Loss and Damage associated with Climate Change Impacts in order to address loss and damage associated with impacts of climate change, including extreme events and slow onset events, in developing countries that are particularly vulnerable to the adverse effects of climate change (hereinafter referred to as the Warsaw International Mechanism);
  - (b) An Executive Committee of the Warsaw International Mechanism, to guide the implementation of functions of the Warsaw International Mechanism (hereinafter referred to as Executive Committee).
2. The COP, at its twentieth session (hereinafter referred to as COP20), approved an initial two-year workplan of the Executive Committee, in accordance with decisions 3/CP.18 and 2/CP.19 (hereinafter referred to as Workplan). COP20 also decided that the Executive Committee may establish expert groups, subcommittees, panels, thematic advisory groups or task-focused ad hoc working groups to help execute the work of the Executive Committee in guiding the implementation of the Warsaw International Mechanism, as appropriate, in an advisory role, and that report to the Executive Committee.
3. The COP, at its twenty-first session (hereinafter referred to as COP21), requested the Executive Committee to establish, according to its procedures and mandate, a task force to complement, draw upon the work of and involve, as appropriate, existing bodies and expert groups under the Convention including the Adaptation Committee and the Least Developed Countries Expert Group, as well as relevant organizations and expert bodies outside the Convention, to develop recommendations for integrated approaches to avert, minimize and address displacement related to the adverse impacts of climate change (hereinafter referred to as Task Force).<sup>1</sup>
4. Action Area 6 of the Workplan focuses on enhancing the understanding of and expertise on how the impacts of climate change are affecting patterns of migration, displacement and human mobility; and the application of such understanding and expertise.

### II. Mandate

5. The mandate of the Task Force, in line with Decision 1/CP.21, paragraph 49, is to complement, draw upon the work of and involve, as appropriate, existing bodies and expert groups under the Convention including the Adaptation Committee and the Least Developed Countries Expert Group, as well as relevant organizations and expert bodies outside the Convention, to develop

---

<sup>1</sup> Decision 1/CP.21, paragraph 49.



recommendations for integrated approaches to avert, minimize and address displacement related to the adverse impacts of climate change.

### **III. Scope of work**

6. In line with the mandate described above, the Task Force in developing recommendations should:

(a) Take into account the latest science, most recent evidence, findings and experience (including research, best practices, data, etc.);

(b) Take into account the three functions of the Warsaw International Mechanism;

(c) Consider approaches to avert, minimize and address displacement related to the adverse impacts of climate change on subnational, national, regional, international level;

(d) Identify legal, policy and institutional challenges, good practices, lessons learned;

(e) Provide opportunities for Parties to articulate their questions and needs, good practices, lessons learned;

(f) Share information with, complement, draw upon the work of and involve, as appropriate, existing bodies and expert groups under the Convention including the Adaptation Committee and the Least Developed Countries Expert Group, as well as relevant organizations and expert bodies outside the Convention;

(g) Take into account Action Area 6 and other relevant action areas of the Workplan, including the Expert Group on non-economic losses and the Technical Meeting on the Migration, Displacement and Human Mobility organized by IOM and the Excom held on 27–29 July 2016 in Casablanca, including its outcomes and recommendations.

7. In addition to its activities related to its mandate, the Task Force may, at the request of the Executive Committee, assist the Executive Committee in guiding the implementation of the Warsaw International Mechanism, in an advisory role. Specifically, in line with the Action Area 6 of the Workplan, the Task Force may be requested by the Executive Committee to help it undertake activities related to „enhancing the understanding of and expertise on how the impacts of climate change are affecting patterns of migration, displacement and human mobility; and the application of such understanding and expertise“.

### **IV. Activities, tasks, deliverables and associated timeline**

8. Within the framework of the mandate and scope of work, the Task Force is to organize at least one face-to-face meeting and to prepare its draft workplan, including a list of activities, associated deliverables and respective timelines, subject to review and approval by the Executive Committee and prior to implementation of workplan by the Task Force.

9. Target audiences for the recommendations can include, but do not need to be limited to, inter alia, the Executive Committee, the Parties, governments, regional organizations, practitioners, civil society, technical and scientific communities.

## **V. Required qualifications and expertise**

10. Selection of technical experts will be based on the following required qualifications and expertise:

(a) Practical international, regional and/or national experience related to integrated approaches to avert, minimize and address displacement related to the adverse effects of climate change, at a range of different levels;

(b) Demonstrable expertise relevant for developing recommendations for integrated approaches to avert, minimize and address displacement related to the adverse impacts of climate change, is desirable.

## **VI. Size and composition of the Task Force**

11. The Task Force consists of:

(a) Balanced representation of Annex I<sup>2</sup> and non-Annex I<sup>3</sup> members of the Executive Committee;

(b) Technical experts reflecting regional diversity;

(c) One representative from the Adaptation Committee and one from the Least Developed Countries Expert Group.

12. The total number of individuals described in paragraph 11(a) above will not exceed four at a time. The total number of individuals described in paragraph 11(b) above will not exceed eight.

13. The Task Force will be co-facilitated by two members from the Executive Committee.

14. The technical expert members could be drawn as follows:

(a) Representatives from UNFCCC NGO constituency groups<sup>4</sup>, with no constituency having more than one representative;

(b) Representatives from intergovernmental organizations (IGO), that have been admitted by the COP to the UNFCCC process;

(c) Any other institution agreed for inclusion by the Executive Committee.

---

<sup>2</sup> Annex I' refers to Annex I Parties to the Convention.

<sup>3</sup> Non-Annex I' refers to non-Annex I Parties to the Convention.

<sup>4</sup> Constituency groups are as follows: Environmental non-governmental organizations (ENGO); Research and independent non-governmental organizations (RINGO); Business and industry non-governmental organizations (BINGO); Farmers; Indigenous peoples organizations (IPO); Local government and municipal authorities (LGMA); Trade Unions non-governmental organizations (TUNGO); Women and Gender; and Youth non-governmental organizations (YOUNGO).

15. For paragraphs 14 (a)-(c) above, the Executive Committee members of the Task Force will recommend UNFCCC NGO constituency groups, IGOs or institutions from which representative(s) will be drawn, to the Executive Committee co-chairs for approval.

16. The Executive Committee, at the request of the Task Force, can invite additional technical experts and representatives from other bodies, as needed, to serve as ad-hoc members of the Task Force.

17. The Task Force members who are not members of the Executive Committee may not act as representatives of the Executive Committee.

## **VII. Mode of work**

18. The mode of the work of the Task Force includes:

- (a) Electronic modalities (primary modality);
- (b) In-person meetings, as deemed necessary. Support for participation applies to only those in-person meetings which the Executive Committee has approved in advance.


## **VIII. Reporting**

19. The task force reports to the Executive Committee, on a regular basis, through its co-facilitators, at the meetings of the Executive Committee, and through written reports, including interim progress report by COP23, as appropriate.

20. Progress related to the work of the Task Force will be captured in the report of the Executive Committee.

## **IX. Timeframe**

21. The mandate of the Task Force, as described above, shall be delivered no later than COP24, with a possibility of extension, unless otherwise decided by the Executive Committee.



For information about  
the Task Force on Displacement, visit

[www.unfccc.int/9978](http://www.unfccc.int/9978)