

Tracking Adaptation Measuring Development

Dr Susannah Fisher
International Institute for
Environment and Development, UK

Adaptify



iied International Institute
for Environment
and Development



iied

Outline

- Introduction
- What is TAMD?
- The framework
- TAMD countries
- Expected outcomes and next steps

iied

What is TAMD?

The logo for the International Institute for Environment and Development (iied) is located in the top right corner of the slide. It consists of the lowercase letters 'iied' in a white sans-serif font, positioned on a green rectangular background. To the right of the green rectangle are three horizontal bars in blue, pink, and orange.

An evaluative framework for assessing the *effectiveness* of adaptation and *adaptation-relevant* interventions

Existing frameworks focus on *efficiency* - ratios of outputs to inputs rather than outcomes, spending over results (IEG 2013)

Addresses outcomes and longer term impacts

www.iied.org

Development of TAMD

The logo for the International Institute for Environment and Development (iied) is located in the top right corner of the slide. It consists of the lowercase letters 'iied' in a white sans-serif font, positioned on a green rectangular background. To the right of the green rectangle are three horizontal bars in blue, pink, and orange.

Nov 2011 – Mar 2013

Conceptual development, international collaborative team

Mar 2013 – Feb 2014

Feasibility testing in 4 countries

- Mozambique, Kenya, Pakistan and Nepal

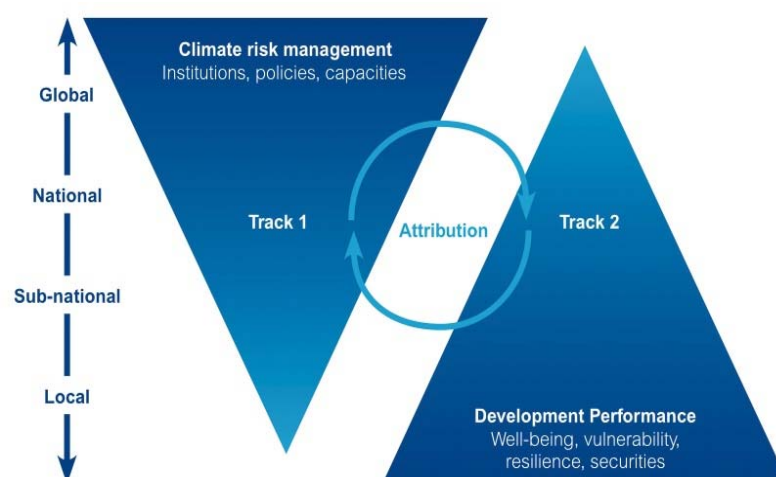
www.iied.org

Outline

- Introduction
- What is TAMD?
- **The framework**
- TAMD countries
- Expected outcomes and next steps


www.iied.org

The TAMD Framework – The 2 Tracks


www.iied.org

TAMD logic

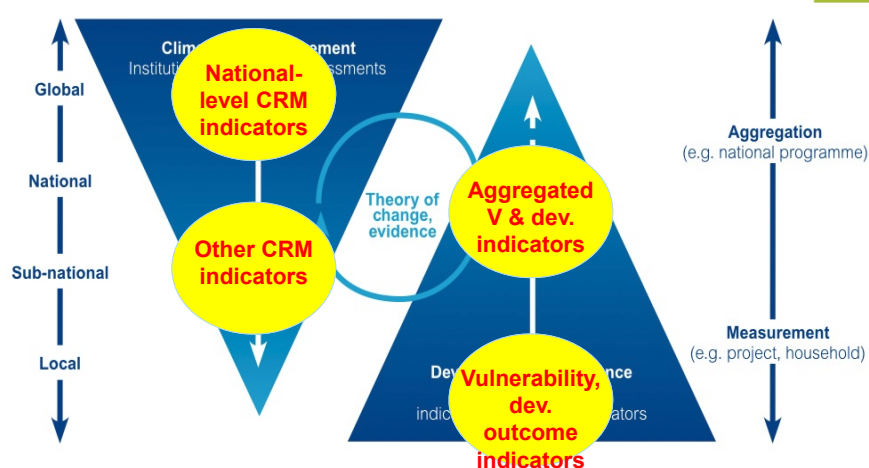
Theory of change

Improved climate risk management decisions will lead to better (less damaged) development outcomes.

M&E of climate risk management and climate vulnerability proxies in beneficiary population to enable improved decision making.

iied

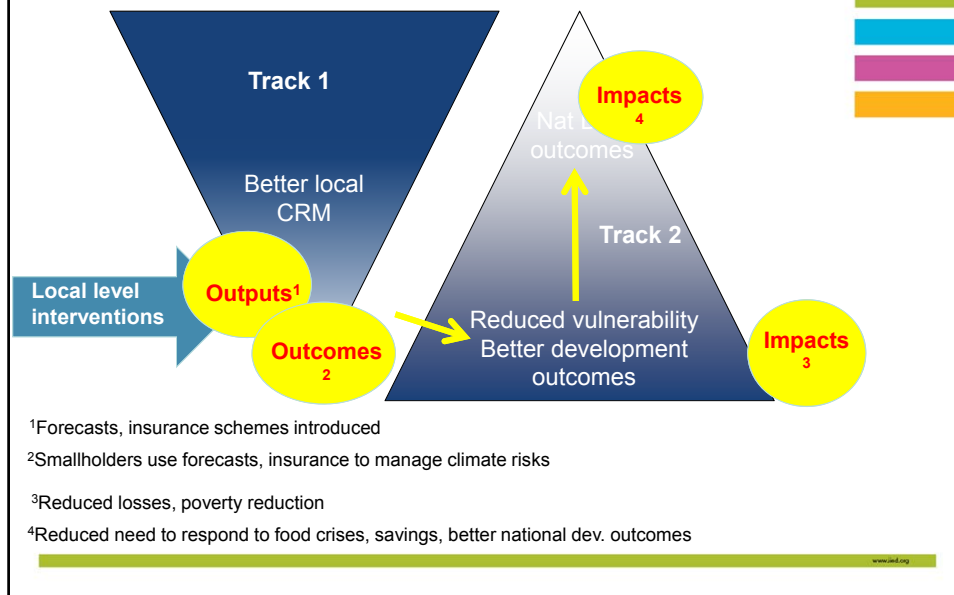
Mapping outputs, outcomes and impacts



- Represent CRM, vulnerability, development outcomes, at all levels, both tracks
- Supported by narratives (ToC, experience) to address attribution

iied

Mapping outputs, outcomes, impacts



Example Indicator Scorecard

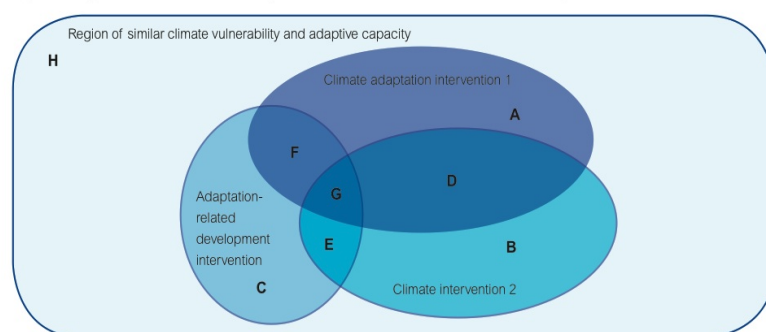
Indicator 1. Climate change integration into planning Representation of strategies that address climate change in relevant planning documents & processes	No	Partial	Yes
1. Is there a climate change plan or strategy set out in a dedicated strategy document and/or embedded in the principal planning documents at the level being assessed (e.g. national, sector, ministry)?			
2. Is there a formal (e.g. legal) requirement for climate change (adaptation/mitigation) to be integrated or mainstreamed into development planning (cf requirement for EIA for certain activities/projects)?			
3. Have specific measures to address climate change (adaptation/mitigation) been identified and funded?			
4. Are climate-relevant initiatives routinely screened for climate risks?			
5. Is there a formal climate safeguards system in place that integrates climate risk screening, climate risk assessment (where required), climate risk reduction measures (identification, prioritisation, implementation), evaluation and learning into planning?			
Score (No. of "YES" answers x 2, plus no. of "PARTIAL" answers x 1)			

iied

TAMD in Quasi-Experimental Mode

iied

Figure 6. Hypothetical scenario whereby effects of different interventions can be compared



www.iied.org

TAMD and vulnerability

iied

Measuring through proxies to vulnerability
converted to unit less scores

Intermediary stage to impact on development
outcomes

Specific to hazard and local context

Linked to empirical theories of change

www.iied.org

TAMD and contextual indicators

The logo for the International Institute for Environment and Development (iied), consisting of the lowercase letters 'iied' in a white serif font on a green rectangular background.

Tracking external hazards and changes

Climate change monitoring for intensification

Normalisation through statistical techniques or
'rule of thumb' use of contextual indicators

Examples: loss and damage data, mortality from
extreme events, food prices.

A small green horizontal bar containing the website address 'www.iied.org' in white text.

Outline

The logo for the International Institute for Environment and Development (iied), consisting of the lowercase letters 'iied' in a white serif font on a green rectangular background.

- Introduction
- What is TAMD?
- The framework
- TAMD countries
- Expected outcomes and next steps

A small green horizontal bar containing the website address 'www.iied.org' in white text.

TAMD feasibility tests

Mozambique focusing on M&E of national climate change strategy – national indicators

Kenya county government and ward level adaptation funds

Pakistan historical evaluation of rainwater harvesting in Kashmir – climate contextualising

Nepal linking interventions effects and aggregating into national systems



www.iied.org

TAMD in Nepal

National adaptation programme of the GoN

Overarching objective: Increased community resilience to extreme events through decentralised planning and community based adaptation (NAPA/LAPA)



Increasing
resilience



Increasing
resilience



Increasing
resilience

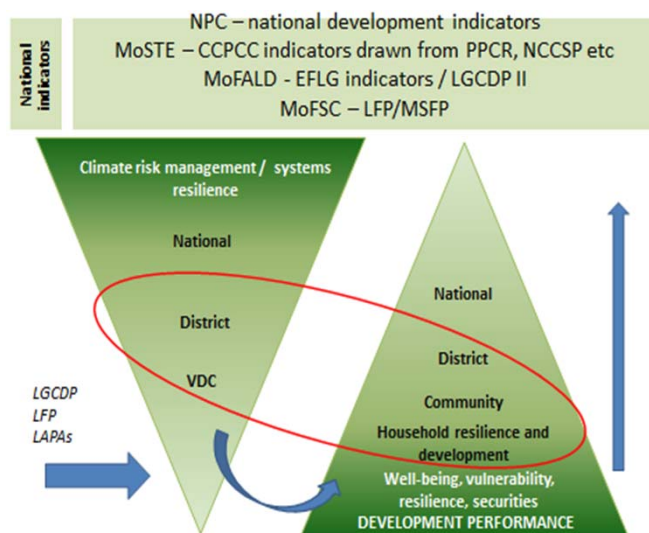
Multiple projects and government programmes at different levels targeting aspects of vulnerability

How to measure the changes in resilience and contribution to the national objective across multiple interventions?



www.iied.org

TAMD in Nepal



TAMD in Nepal



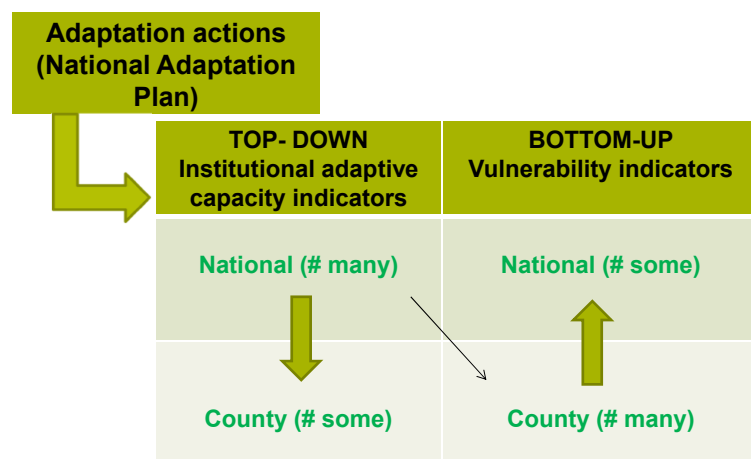
Data constraints

Communities



Local consultations

TAMD in Kenya



LTS Africa, 2013

TAMD in Kenya

Top down outcomes (county)	Bottom up outcomes (national)
% of county roads that have been made "climate resilient" or that are not considered to be vulnerable [2,3,4,5,6]	Number of people by gender permanently displaced from their homes due to drought, flood or sea level rise [1,4,10,13,14,18,45,46,47]
% of population by gender in areas subject to flooding and/ or drought in the county who have access to KMD information on rainfall forecasts [12,13,14,15,16,20]	Number of ha of productive land lost to soil erosion [4,6,7,12,17]
% of people by gender in the county permanently displaced from their homes as a result of flood, drought or sea-level rise [21,22,23]	% rural households with access to water from a protected source [19,20,22]

TAMD in Kenya

- Isiolo County (pastoralists and livestock economy)
- County/Ward Adaptation Committee
- County Adaptation Fund
- Adaptation proposals in livestock, water, agriculture, natural resource management governance
- Ward level theories of change

The logo for the International Institute for Environment and Development (iied) is located in the top right corner of the slide. It consists of the lowercase letters 'iied' in a white serif font, set against a green rectangular background. To the right of the text are four horizontal bars in blue, white, pink, and orange.A thin green horizontal bar is located at the bottom of the slide, containing the website address 'www.iied.org' in a small, white, sans-serif font.

Outline

- Introduction
- What is TAMD?
- The framework
- TAMD countries
- Expected outcomes and next steps

The logo for the International Institute for Environment and Development (iied) is located in the top right corner of the slide. It consists of the lowercase letters 'iied' in a white serif font, set against a green rectangular background. To the right of the text are four horizontal bars in blue, white, pink, and orange.A thin green horizontal bar is located at the bottom of the slide, containing the website address 'www.iied.org' in a small, white, sans-serif font.

TAMD expected outcomes

The logo for the International Institute for Environment and Development (iied) is located in the top right corner of the slide. It consists of the lowercase letters 'iied' in a white sans-serif font, positioned within a green rectangular box. To the right of this box are four horizontal bars of equal length, colored blue, green, red, and yellow from top to bottom.

- Four bespoke approaches in the 4 countries
- Potential indicators
- Methodologies for climate contextualisation and proxies of vulnerability
- Understanding effectiveness of interventions and contribution of development programmes to resilience

www.iied.org

Next steps

The logo for the International Institute for Environment and Development (iied) is located in the top right corner of the slide. It consists of the lowercase letters 'iied' in a white sans-serif font, positioned within a green rectangular box. To the right of this box are four horizontal bars of equal length, colored blue, green, red, and yellow from top to bottom.

- Other countries getting involved (Ethiopia, Cambodia, Zanzibar)
- Findings due in March 2014
- Dissemination and publications based on country work
- Everything publically available for use by others

www.iied.org

Thank you and questions



iied

Susannah.fisher@iied.org

www.iied.org