

Accessing climate finance: strengthening institutional capacity

Bonn, 04 June, 2015



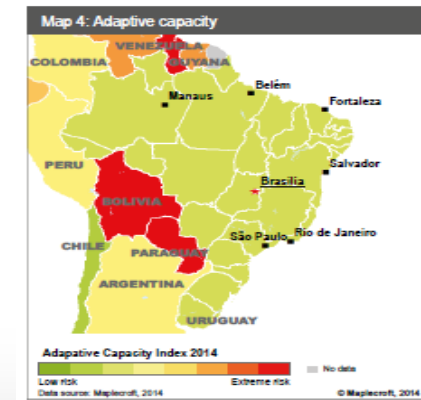
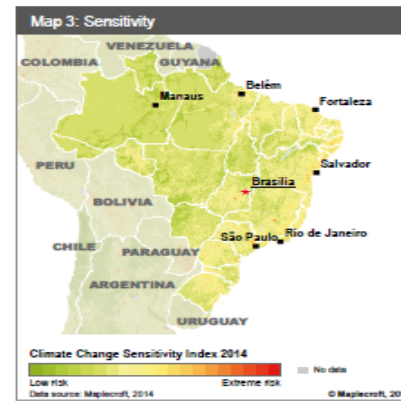
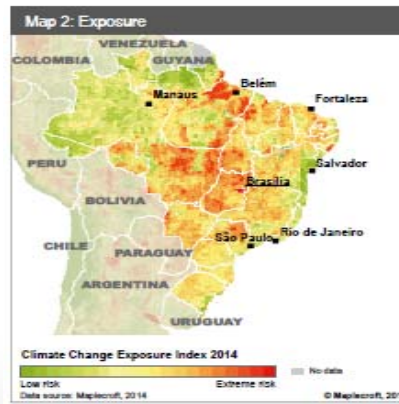
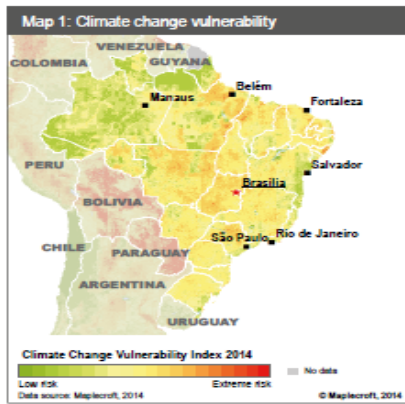
Vulnerability to Climate Change Index for Latin America and the Caribbean Region

Published September 2014 (scioteca.caf.com)

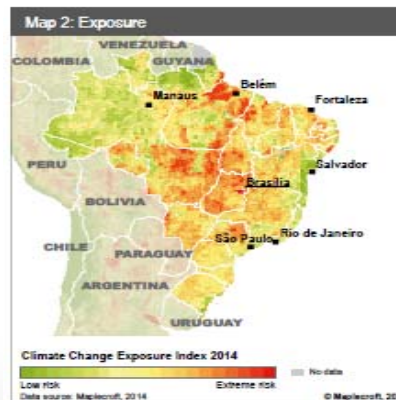
Prioritizing countries and cities based on their vulnerability and identifying opportunities for project development



Vulnerability Index: Example Brazil



Vulnerability Index Brazil – Exposure Index



Evaluates the risk of being impacted by extreme climate related events

- drought, wildfires, tropical cyclones, storms...

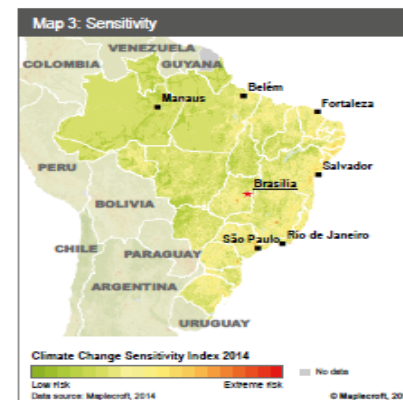
and the risk posed by projected changes in baseline climate parameters

- air temperature, precipitation and specific humidity...

Vulnerability Index Brazil – Sensitivity Index

Measure of the population's susceptibility

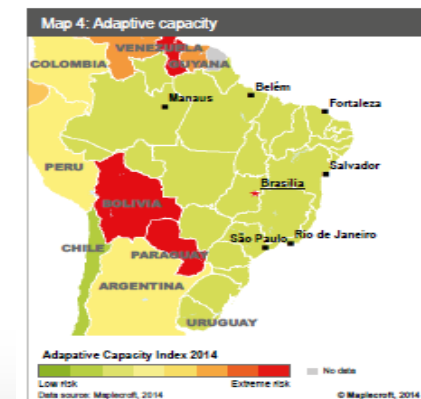
- related to health, poverty, knowledge, infrastructure, conflict, agriculture, resource pressure.
- examines the current relative human sensitivity to exposure to extreme climate related events and predicted climate change.



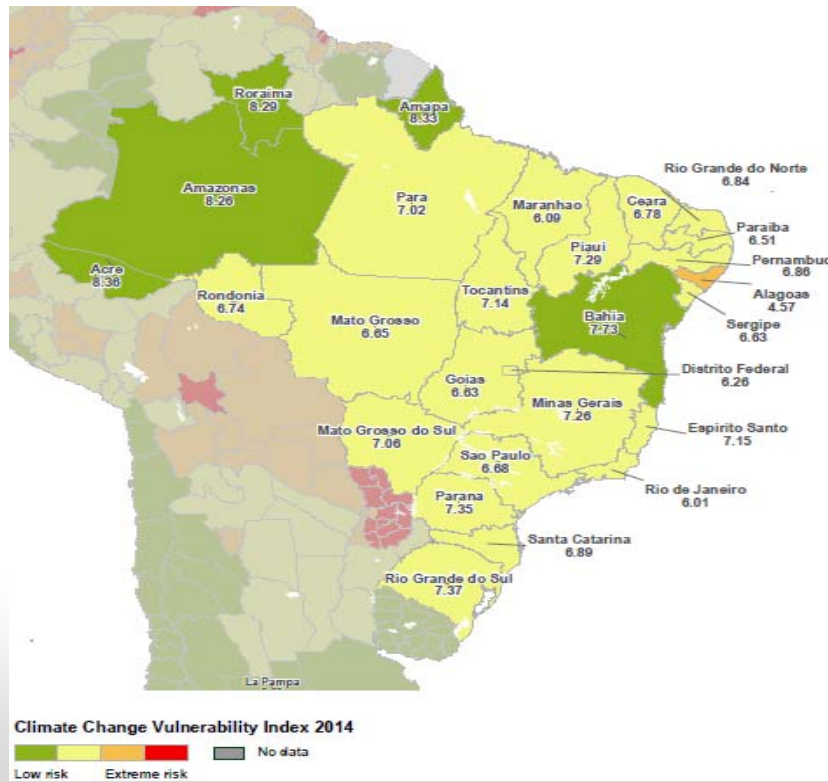
Vulnerability Index Brazil – Adaptive Capacity Index

Evaluates the ability of institutions, economy and society to adjust to existing or anticipated stresses

- Key factors: economy; stability of the government; the level of knowledge transfer and communication; the ability to develop innovative technologies and practices; available natural resources



Vulnerability Index Brazil



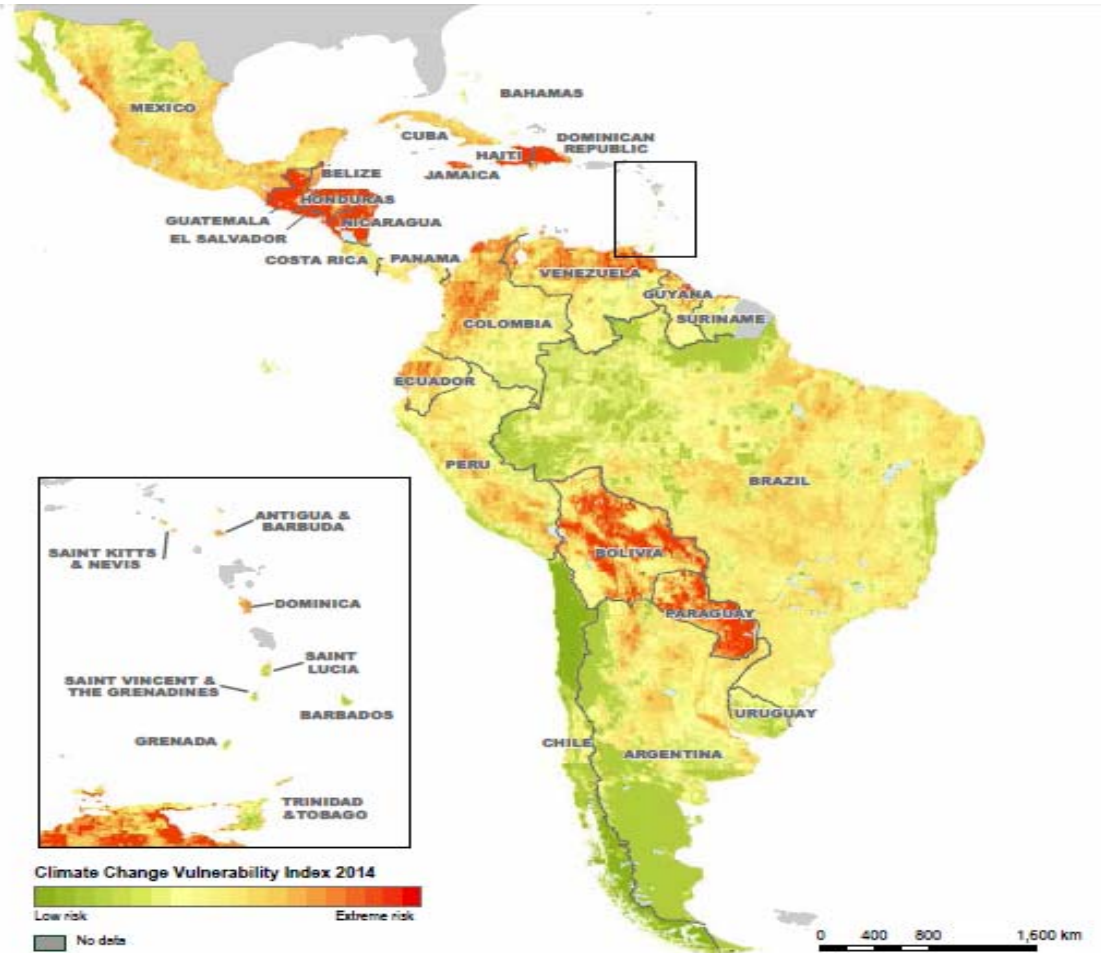
	Climate change vulnerability Index (CCVI)	Exposure Index	Sensitivity Index	Adaptive Capacity Index
Brazil	5.77	5.11	6.32	7.88

Administrative area	Climate Change Vulnerability	Exposure	Sensitivity	Adaptive Capacity	City	Climate Change Vulnerability	Exposure	Sensitivity	Adaptive Capacity
Acre	8.36	8.42	8.44	7.88	Rio Branco	4.63	4.71	4.38	7.88
Alagoas	4.57	3.67	2.92	7.88	Maceio	1.62	1.30	2.42	7.88
Amapá	8.33	6.62	8.67	7.88	Macapá	2.44	1.61	4.34	7.88
Amazonas	8.26	7.59	8.59	7.88	Manaus	4.13	4.06	3.96	7.88
Bahia	7.73	6.11	6.06	7.88	Salvador	3.91	4.90	2.03	7.88
Ceará	6.78	5.35	5.08	7.88	Fortaleza	3.12	3.70	1.60	7.88
Distrito Federal	6.26	3.38	3.45	7.88	Brasília	3.52	3.09	3.89	7.88
Espírito Santo	7.15	6.66	4.07	7.88	Vitória	2.25	1.73	2.10	7.88
Goiás	6.63	2.48	7.34	7.88	Goiania	3.56	3.92	2.38	7.88
Maranhão	6.09	4.56	6.57	7.88	São Luís	1.82	1.58	2.69	7.88
Mato Grosso	6.65	3.24	8.19	7.88	Cuiabá	3.31	3.31	2.79	7.88
Mato Grosso do Sul	7.06	4.55	8.10	7.88	Campo Grande	3.30	2.89	3.64	7.88
Minas Gerais	7.26	5.18	6.31	7.88	Belo Horizonte	3.01	2.97	2.75	7.88
Para	7.02	5.00	8.02	7.88	Belém	1.92	1.84	2.49	7.88
Paraná	6.51	4.49	4.44	7.88	João Pessoa	3.06	3.42	2.27	7.88
Paraná	7.35	5.65	5.84	7.88	Curitiba	4.89	6.18	2.54	7.88
Pernambuco	6.86	5.05	4.73	7.88	Recife	3.03	3.23	2.53	7.88
Piauí	7.29	5.14	7.33	7.88	Teresina	2.72	2.35	3.31	7.88
Rio de Janeiro	6.01	5.35	4.65	7.88	Rio De Janeiro	4.39	5.55	2.12	7.88
Rio Grande do Norte	6.84	4.56	4.63	7.88	Natal	2.93	2.81	3.08	7.88
Rio Grande do Sul	7.37	5.99	6.39	7.88	Porto Alegre	4.63	5.81	2.21	7.88
Rondonia	6.74	4.78	7.65	7.88	Porto Velho	3.66	3.36	3.95	7.88
Roraima	8.29	7.47	8.67	7.88	Boa Vista	4.27	3.96	4.59	7.88
Santa Catarina	6.89	5.84	6.07	7.88	Florianópolis	2.33	2.35	2.57	7.88
São Paulo	6.68	4.49	5.56	7.88	São Paulo	5.53	7.35	2.30	7.88
Sergipe	6.63	6.78	2.98	7.88	Araçaju	2.28	2.24	1.98	7.88
Tocantins	7.14	3.47	8.17	7.88	Palmas	3.07	2.08	4.65	7.88

Vulnerability Index Latin America

Highest risk:

- Haiti
- Guatemala
- El Salvador
- Honduras
- Dominican Republic



Infrastructure resilience

Project: Vulnerability analysis of hydropower plants in Ecuador

Study of 8 hydropower plants – 2,762 MW (52% of installed by 2012)

Status – technical assistance approved for 2 studies: Paute-Sopladora & Mazar-Dudas



Institutional capacity building

- Strengthen institutional capacity of public and private sector on adaptation issues
- Subregional workshops: Exploring finance opportunities for adaptation projects

1st Workshop: Andean region.
October 2013, Lima, Peru

2nd Workshop: Mesoamerica.
September 2014, Mexico City



Accessing finance for cities

- Why direct finance matters
- Barriers
- Objective
- What is needed – leading by example





Más oportunidades, un mejor futuro.



www.caf.com