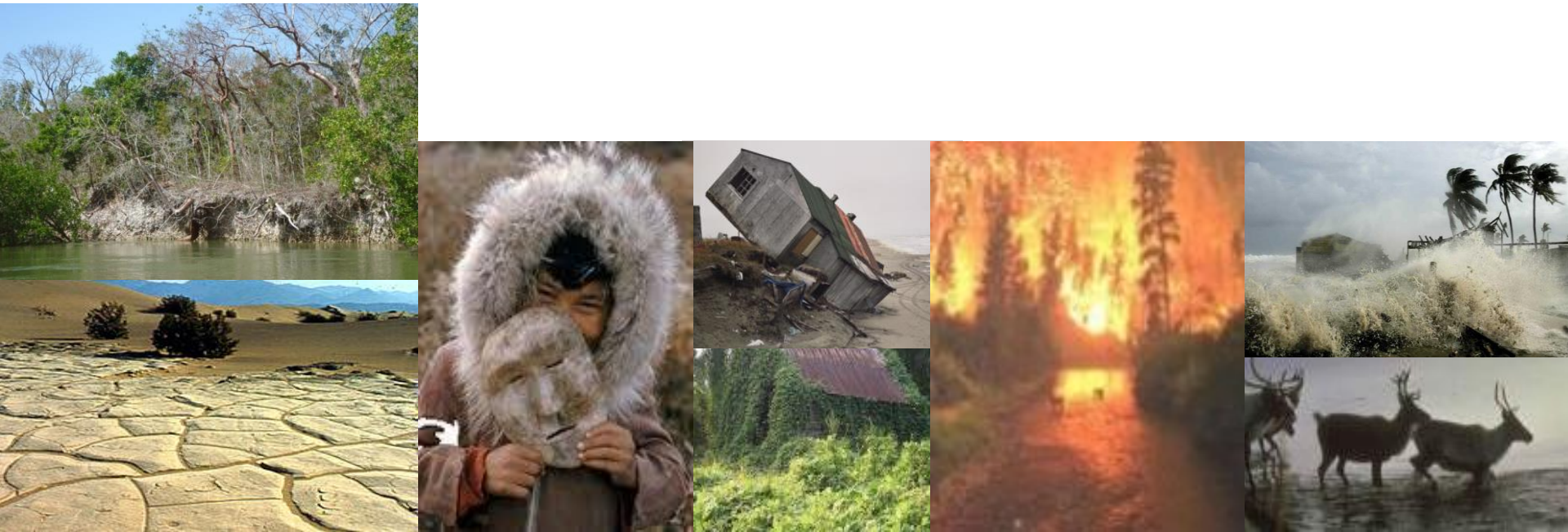


Cultural Heritage: Addressing NELD due to Climate Change

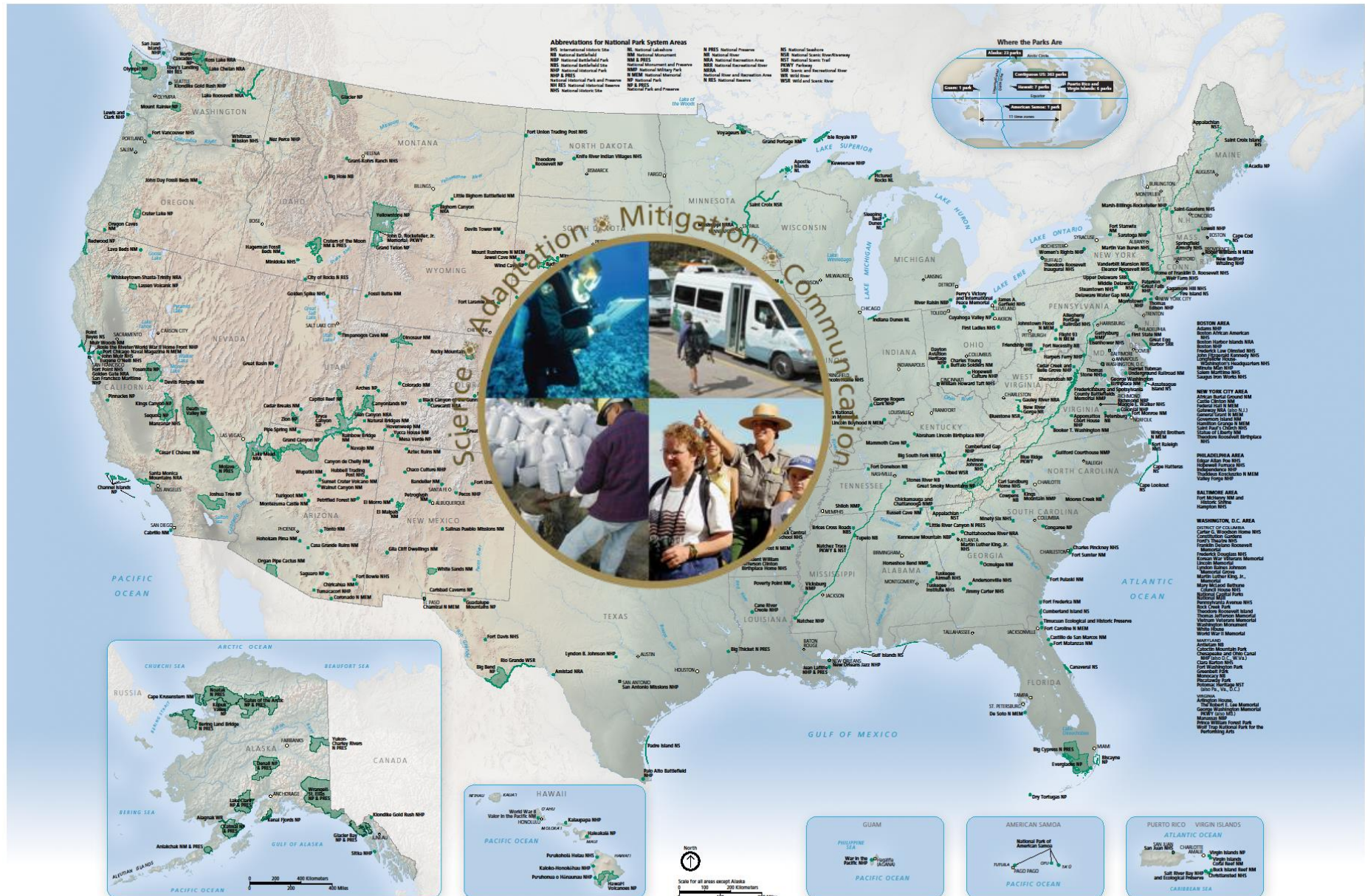


UNFCCC: Excom 3 Expert Briefings
April 26, 2016, Bonn, Germany

Marcy Rockman
Climate Change Adaptation Coordinator for Cultural Resources, US National Park Service









Cultural Heritage Includes:



Archaeological sites



Buildings and Structures



Cultural Landscapes



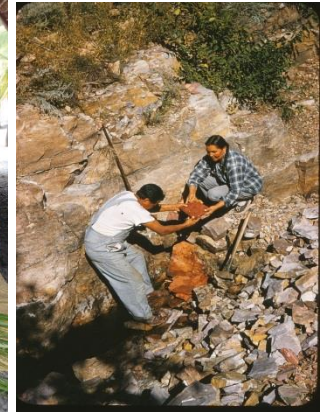
Ethnographic Resources



Museum collections
(including archives)



Cultural Heritage NELs



Information

Identity



NPS Climate Change Response Strategy: 4 Pillars

Science

Working w. data, trends,



Scenario Planning

Facilities Management

Mitigation

*Reducing greenhouse gas emissions
Reducing environmental footprint:*

Reducing greenhouse gas emissions

Improving energy efficiency

Communication

*Sharing, interpreting, and engaging
NPS and public. Science,
Adaptation, Mitigation:*

Interpreting and

New Exhibits

Intern & Volunteer Programs

Information

Identity



NPS 2x4 Concept Framework for Climate Change-Cult. Heritage

Dual approach: impacts on heritage | information and identify anchored in heritage

Science

- Climate science@CR scales
- Vulnerability assessments
- Inventory –Monitoring
- GIS
- Preservation science
- Documentation science

- Paleoclimate
- Social climatic thresholds
- Shifting baselines
- Traditional ecological knowledge
- Past land use
- Paleogenetics

Mitigation

- Historic buildings in energy efficiency
- Resource conservation via historic or native landscapes

- Past architectural and landscape techniques suited to local environments
- Cultural heritage conserve/re-establish sense of place and stewardship

Adaptation

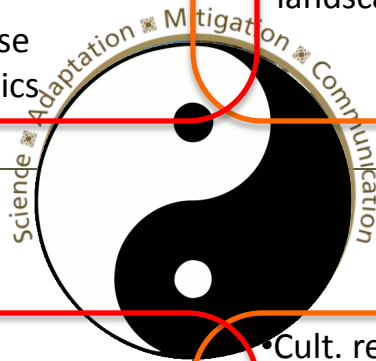
- Scenario planning
- Adaptation approaches
- Decision frameworks
- Policy and standards
- Research to support decision and policy

- Past social adaptability to past env. change
- Traditional ecological knowledge
- Relating past adaptability to current issues, methods, decisions

Communication

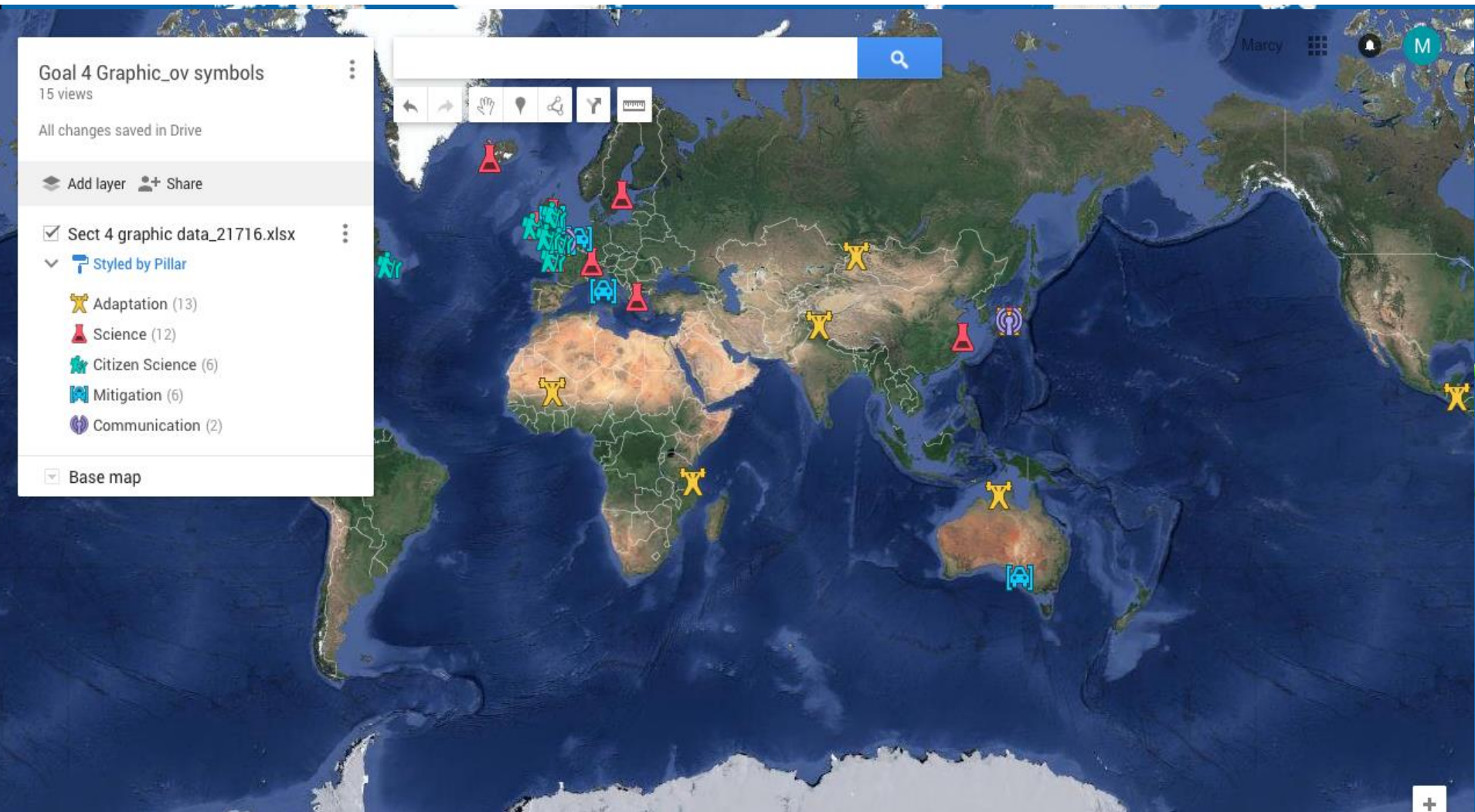
- Cult. resources climate change (CR-CC) literacy
- Dialogue between impacts and information in all pillars
- Links between CR-CC managers-researchers (local-international)
- CR-CC links to public

- Every Place has a Climate Story:
 - Change in the material world
 - Change in experience & lifeways
 - Lessons in change from past societies
 - Origins of modern climate situation



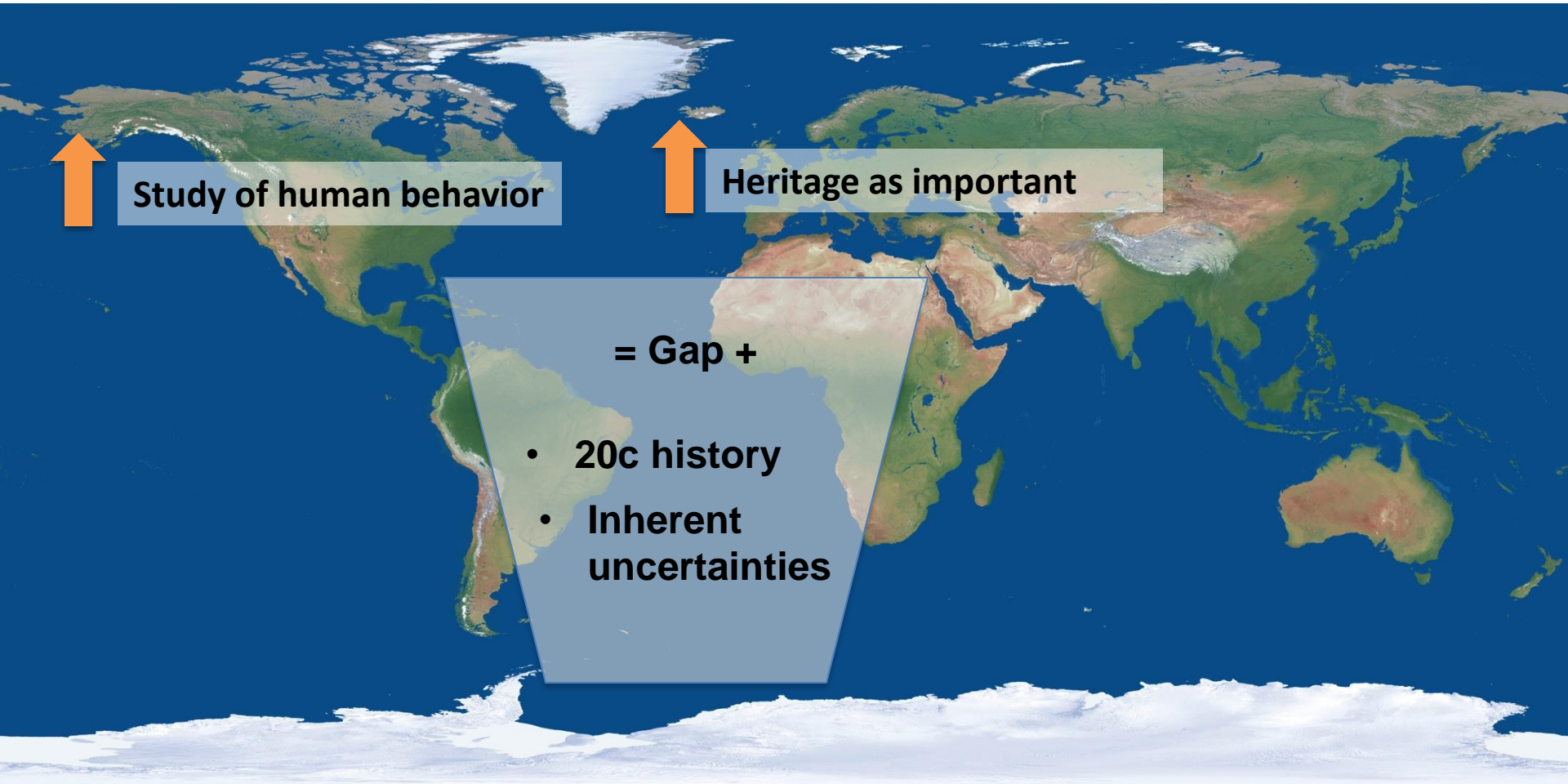


International Work on Cultural Heritage NELs





Background of Cult. Heritage in Global Climate Efforts



Study of human behavior

Heritage as important

= Gap +

- **20c history**
- **Inherent uncertainties**



Needed Stakeholders

Global
Climate
Community



A-2. Adaptation Experience

Throughout history, people and societies have adjusted to and coped with climate, climate variability, and extremes, with varying degrees of success. This section focuses on adaptive human responses to observed and projected climate-change impacts, which can also address broader risk-reduction and development objectives.

Local
Communities

S C A P E

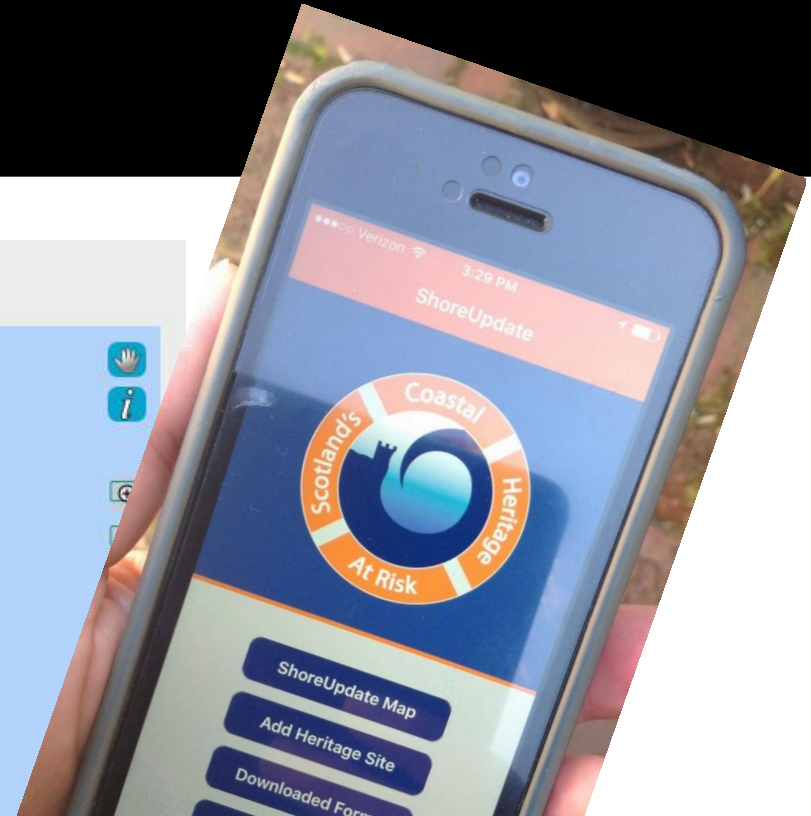
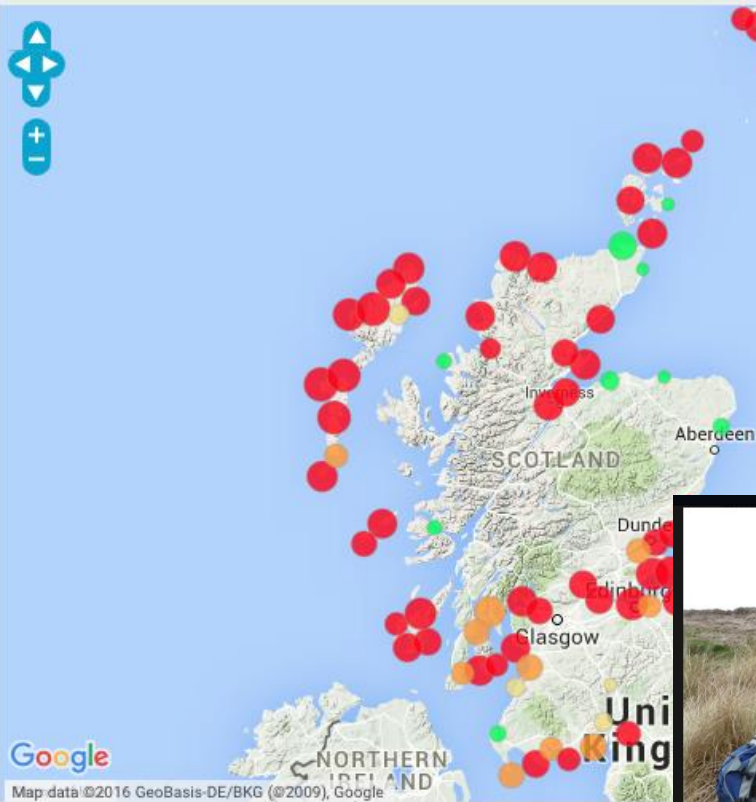
Scottish Coastal Archaeology and the Problem of Erosion





Community in Scotland

Sites at Risk



Scotland's Coastal Heritage at Risk
Page Liked · March 19 ·

We are in Caithness - working with local people (and not so local - Geof has come all the way from the USA to join us!) to survey the coast. Yesterday we were at Murkle Bay, where an eroded Boat House has had a World War II tank trap placed over it. We're near Thurso until Tuesday, so contact elg5@st-andrews.ac.uk if you fancy joining us.

Like Comment Share

32

2 shares

Write a comment...

Friend Requests

Patrick Kenney
2 mutual friends
[Confirm Friend](#)



NPS Approach (with insights from Scotland)

1. Cultural heritage includes impacts on and learning from
2. We are the change: adaptation for cultural heritage lies in our management of it
3. Prioritization should be based on vulnerability and significance
4. Significance should reflect input of stakeholders: contemporary communities with scientific importance, etc.
5. Plan for some goodbye: it will not be possible to save all heritage
6. Every place has a climate story, from how we see and understand change and to origins of modern climate change; cultural heritage should be an integral part of climate change communication.

For vulnerable heritage, options are:

1. No active intervention
2. Offset stresses
3. Improve resiliency/modify resource
4. Manage change
5. Movement
6. Document (prior to loss)
7. Interpret the change (*climate change is heritage of future*)





Growing Cultural Heritage Networks...



Citizen science for coastal impacts



Smithsonian



Preservation during conflict



Thank you



Contact:

Marcy Rockman

marcy_rockman@nps.gov

