

Venue maps

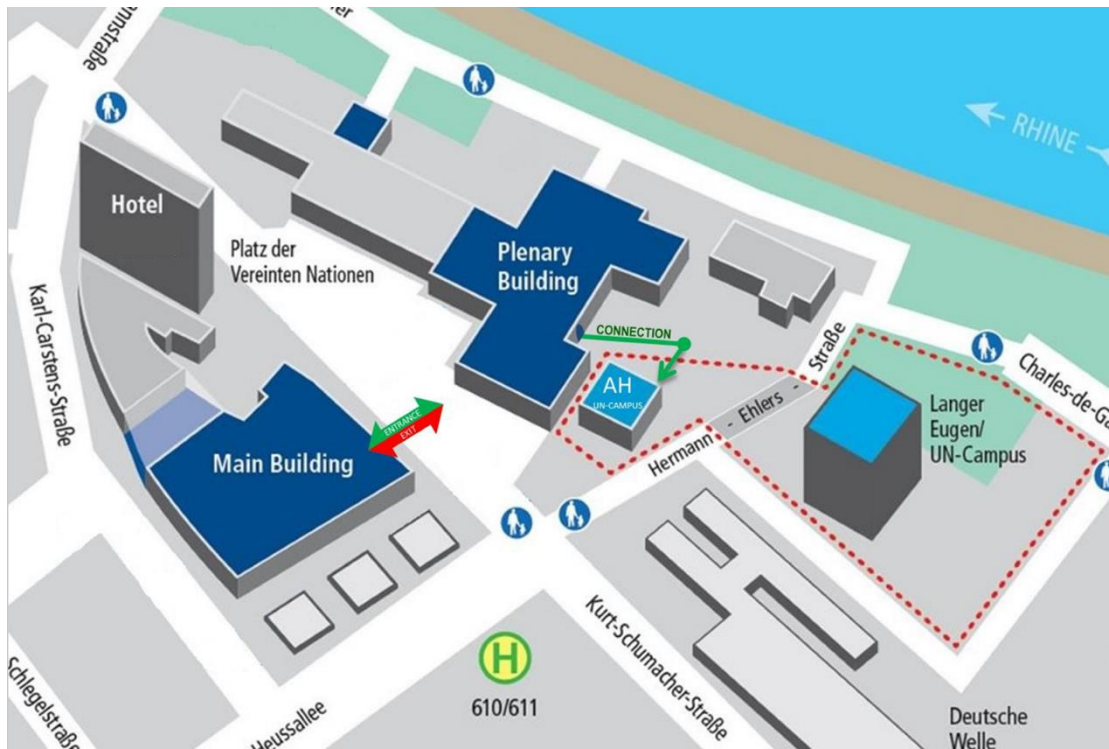


Fig.1 WORLD CONFERENCE CENTER BONN AND UNITED NATIONS CAMPUS

Note:

The conference premises are a non-smoking environment. Smokers are encouraged to enjoy the fresh air around the main building and the plenary building.

Meeting rooms location

Plenary New York and the meeting rooms Genf, Wien 1-2, Wien 3, Nairobi 1-3 and the press conference room Nairobi 4 are located on the ground floor of the main building



Fig. 2 MAIN BUILDING WORLD CONFERENCE CENTER BONN – GROUND FLOOR

The meeting rooms Santiago de Chile, H-202 and Tokio are located on the second floor of the main building, and meeting rooms H-102 and H-104 are located on the first floor.

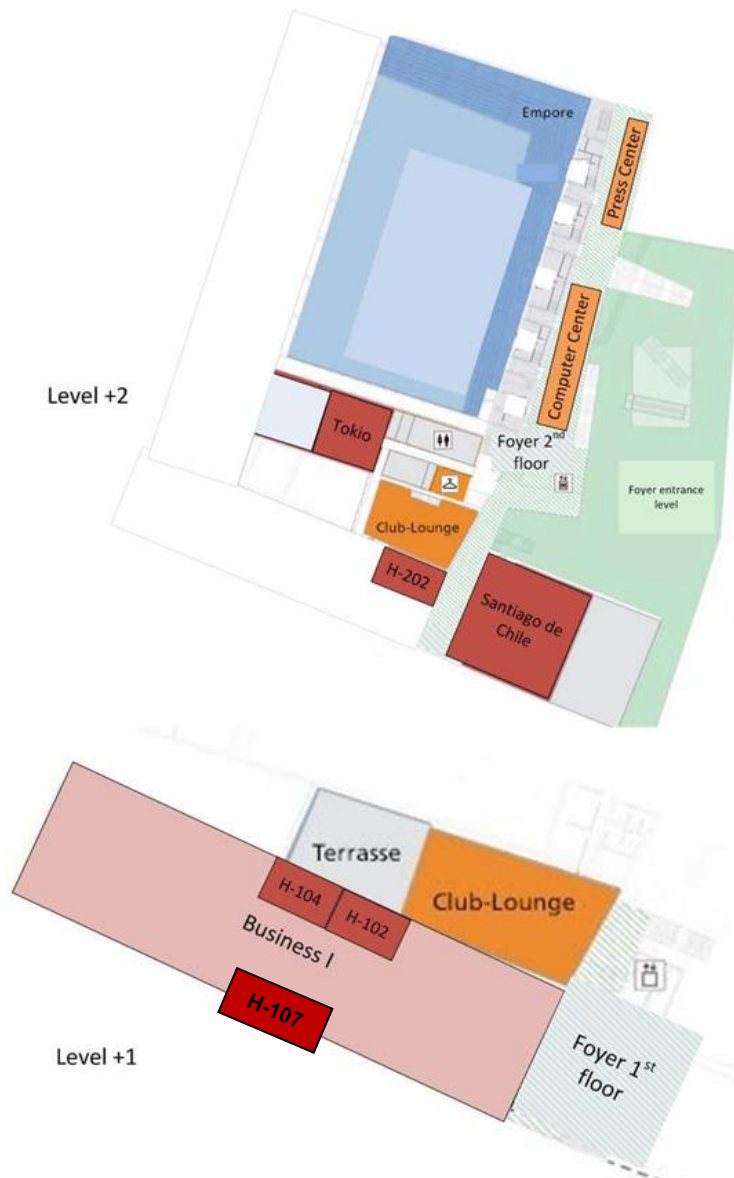


Fig. 3 MAIN BUILDING WORLD CONFERENCE CENTER BONN – FIRST AND SECOND FLOORS

The meeting rooms Bangkok, Addis Abeba 1-3 are located on the Rhine level of the main building. The exhibit area is located on the Rhine level, in the underground passage between the main building and the plenary building.



Fig. 4 MAIN BUILDING WORLD CONFERENCE CENTER BONN – RHINE LEVEL

The majority of side events are held in the plenary building. Meeting rooms for side events are Kaminzimmer, Berlin 1-2, and Bonn 1-2-3. The Chamber Hall and meeting room Kleiner Saal are also located in the plenary building.

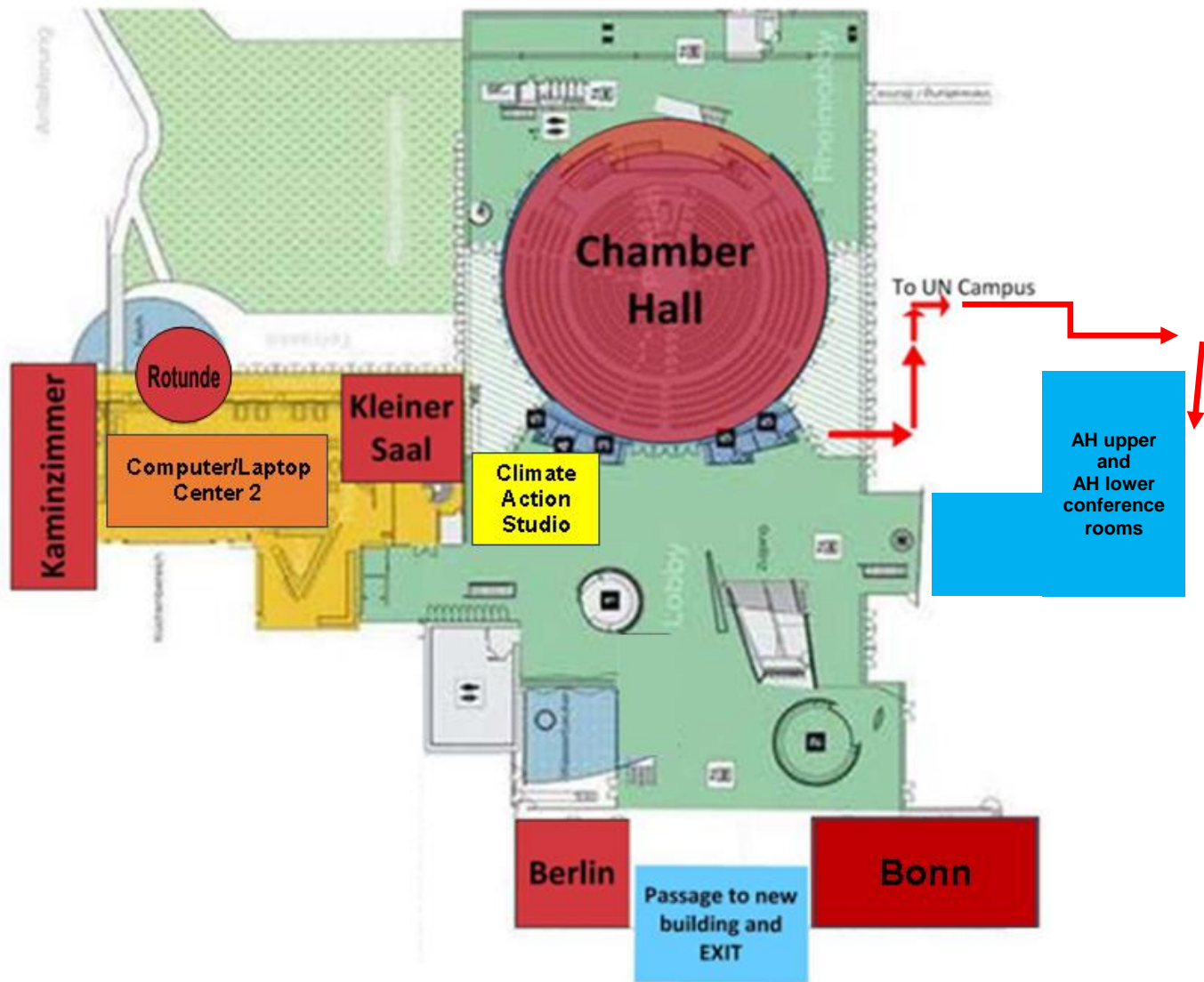


Fig. 5 PLENARY BUILDING WORLD CONFERENCE CENTER BONN – RHINE LEVEL