



International Institute for  
Applied Systems Analysis  
www.iiasa.ac.at

science for global insight



# Insights on investment needs for mitigation actions

Bas van Ruijven

International Institute for Applied Systems Analysis  
(IIASA)

*Experts Meeting on Assessing and Determining the Needs of  
Developing Countries*

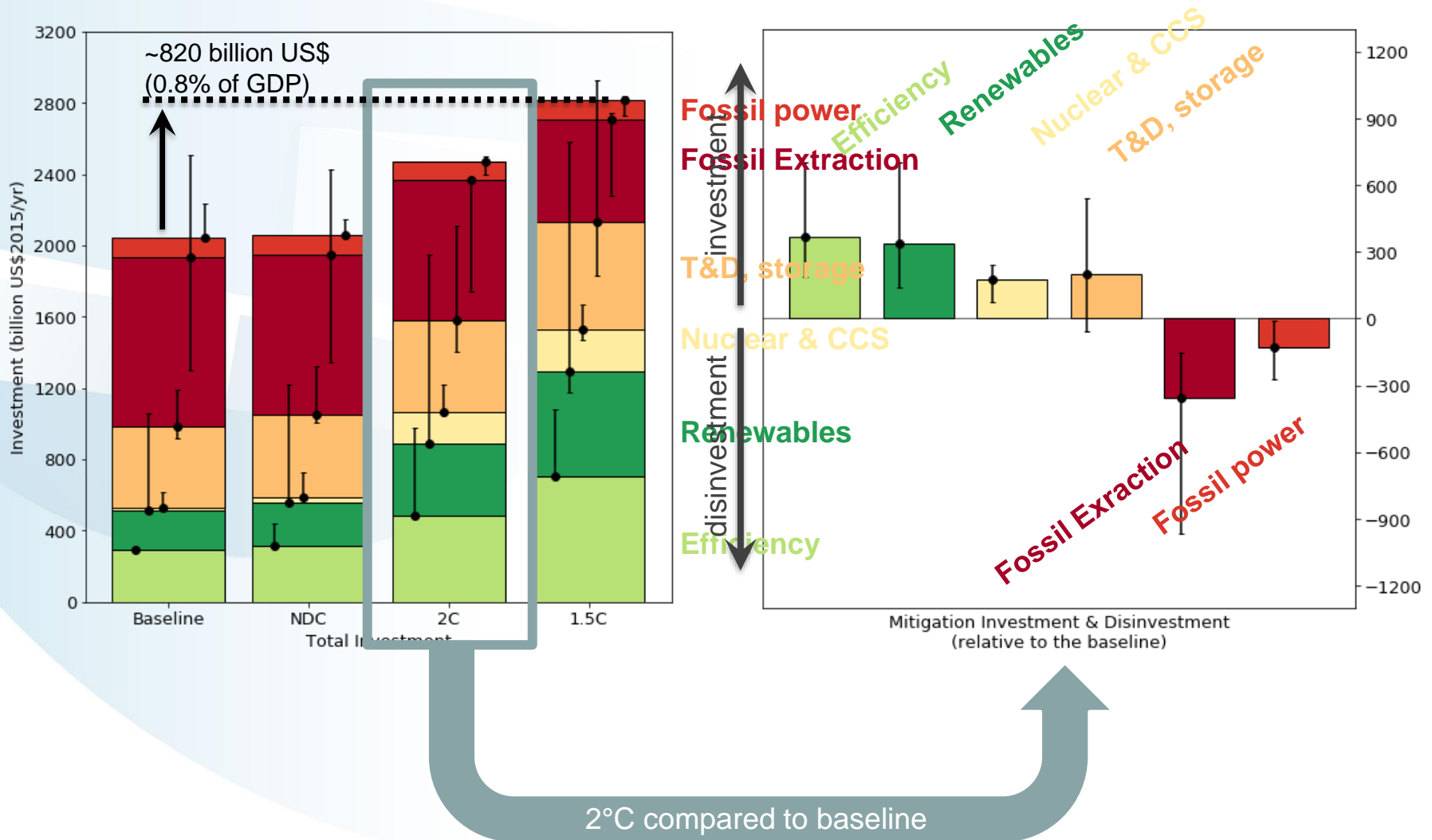
*10 July 2019*



IIASA, International Institute for Applied Systems Analysis

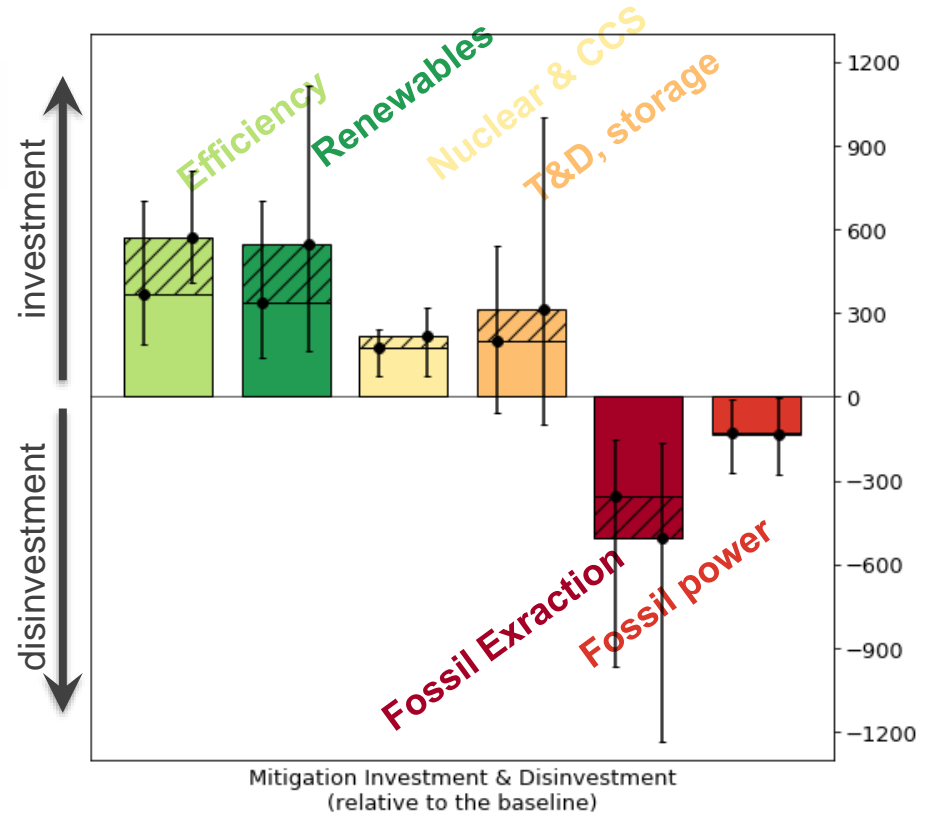
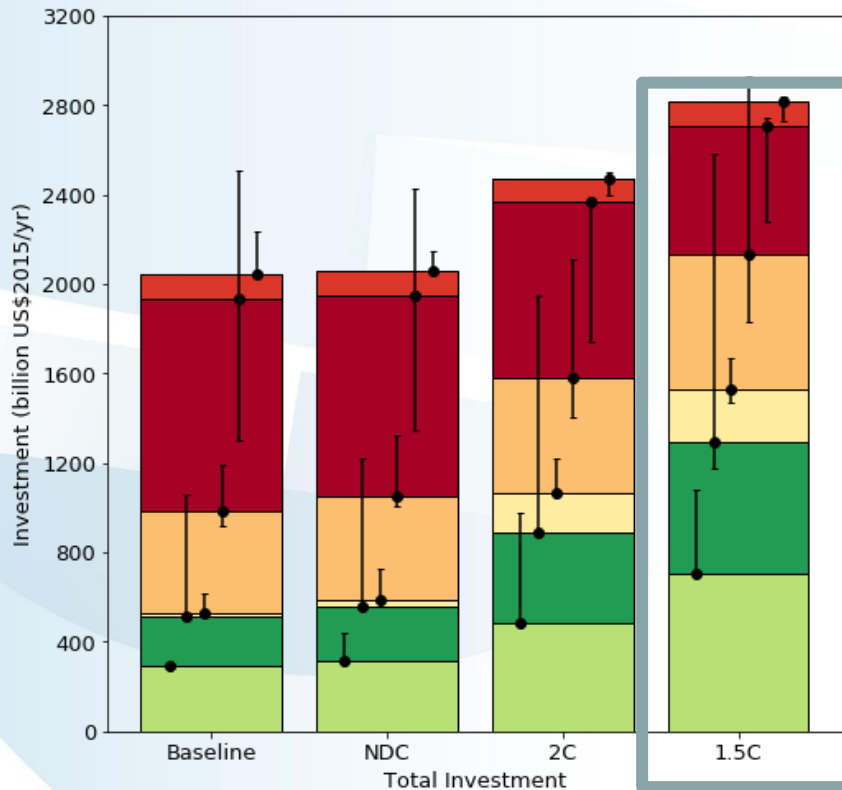
# Global Investment Portfolios for 1.5 and 2C

Average annual investments 2010 to 2050



# Global Investment Portfolios for 1.5 and 2C

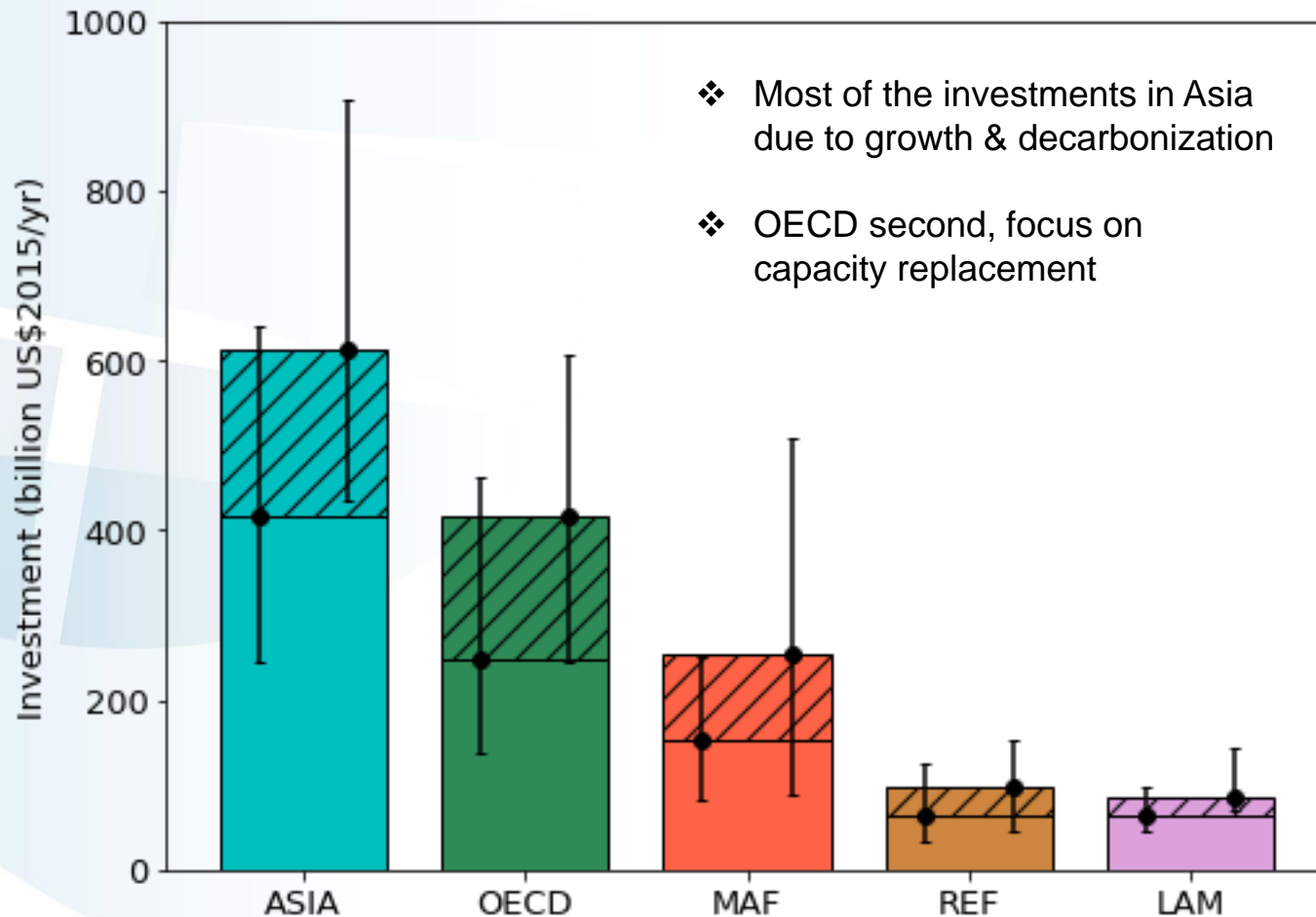
Average annual investments 2010 to 2050



1.5°C compared to baseline

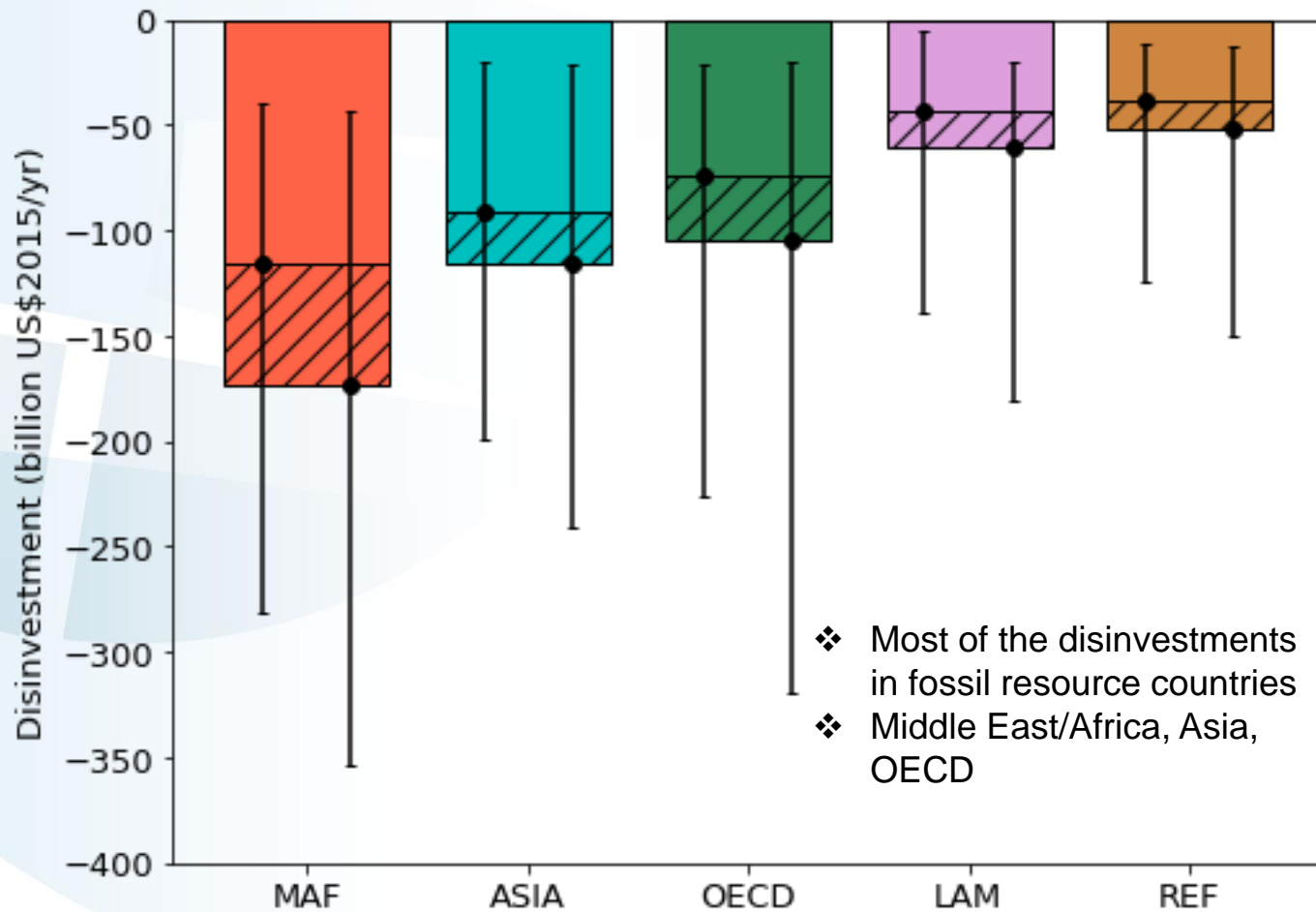
# Regional Investments (1.5 vs 2C)

2015-2050, compared to baseline

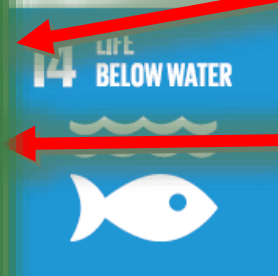


# Regional Disinvestments (1.5C vs 2C)

2015-2050, compared to baseline



- ❖ Most of the disinvestments in fossil resource countries
- ❖ Middle East/Africa, Asia, OECD



# Impact on investments for other SDGs

*If the energy system remains largely the same*

*If the energy system is transformed*

## Energy access



50 (50 to 85)



200 (125 to 320)

### Target 7.1:

Ensure universal access to affordable, reliable and modern energy services

Policy costs to achieve 100% clean fuel adoption throughout the world via subsidies for cookstoves and fuels.

## Clean water and sanitation



834



898

### Targets 6.1, 6.2, 6.3, 6.4:

Ensure universal access to safe drinking water and sanitation; increase wastewater treatment; and reduce water scarcity

Investments for water-related technologies and infrastructures to achieve the targets.

## Air pollution



200



130

### Target 3.9:

Substantially reduce the number of deaths and illnesses from air pollution

Investments for air pollution control technologies to slow the growth in premature deaths due to PM2.5 and other harmful species.

## Food security



1 (0 to 30)



40 (1 to 315)

### Target 2.1:

Avoid an increase in those at risk of hunger

Policy costs to compensate the poor for any increases in food costs. Measured against a baseline that does not fully eliminate hunger.

## Education



180



180

### Target 4.1:

All boys and girls attain full primary and secondary education

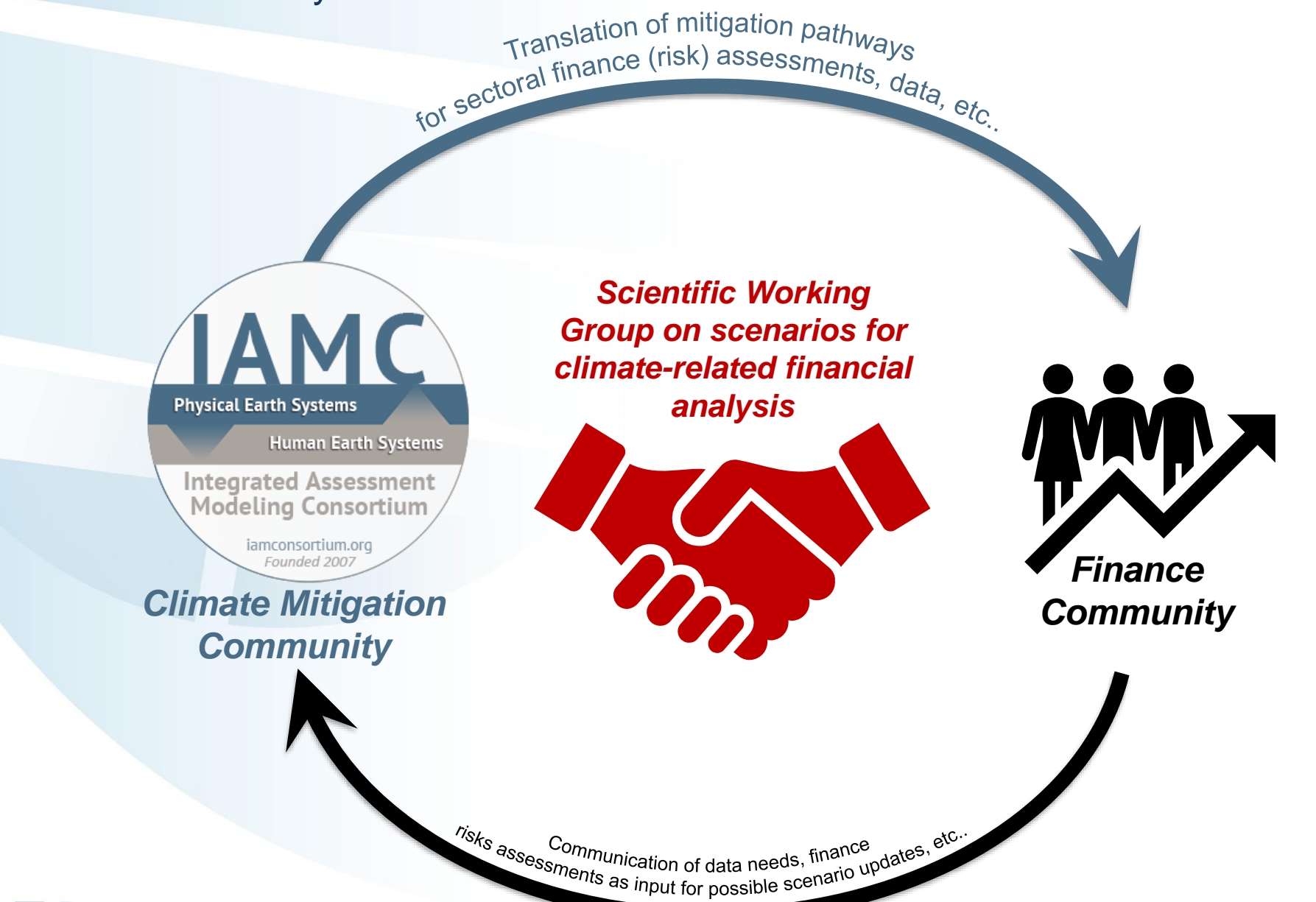
Educational expenditures for delivering full attainment. Calculated external to models; thus no impact from energy system transformation.

# All data available

- Paper: <http://pure.iiasa.ac.at/id/eprint/15328/>
- Supplementary data:  
Detailed results from all six models for five world regions plus EU, USA, China, India  
<https://www.nature.com/articles/s41560-018-0179-z>
- <http://www.cd-links.org/>



# New Community effort to bridge the gap between the climate mitigation and finance community





International Institute for  
Applied Systems Analysis  
www.iiasa.ac.at

science for global insight



# Thank you

[vruijven@iiasa.ac.at](mailto:vruijven@iiasa.ac.at)

twitter: [@vruijven](https://twitter.com/vruijven)



IIASA, International Institute for Applied Systems Analysis