



United Nations

ADVANCE VERSION

FCCC/SB/2021/4



Framework Convention on  
Climate Change

Distr.: General  
20 August 2021

Original: English

---

**Subsidiary Body for Scientific and  
Technological Advice**

**Fifty-second to fifty-fifth session**

Item 5 of the provisional agenda

**Report of the Executive Committee of the Warsaw  
International Mechanism for Loss and Damage  
associated with Climate Change Impacts**

**Subsidiary Body for Implementation  
Fifty-second to fifty-fifth session**

Item 10 of the provisional agenda

**Report of the Executive Committee of the Warsaw  
International Mechanism for Loss and Damage  
associated with Climate Change Impacts**

**Report of the Executive Committee of the Warsaw  
International Mechanism for Loss and Damage associated  
with Climate Change Impacts**

*Summary*

This report covers the work of the Executive Committee of the Warsaw International Mechanism for Loss and Damage associated with Climate Change Impacts between 21 November 2020 and 31 July 2021. It contains information on organizational and procedural matters, including meetings and co-chairing arrangements, and on progress regarding institutional arrangements under the Executive Committee, in particular in relation to the newly established expert groups that advise the Committee, in addition to the two expert groups already in operation. The plans of action of the three new expert groups, developed by the groups and endorsed by the Committee during the reporting period, are contained in the annexes.

## Abbreviations and acronyms

AC	Adaptation Committee
Annex I Party	Party included in Annex I to the Convention
ASEG*	expert group on action and support
CMA	Conference of the Parties serving as the meeting of the Parties to the Paris Agreement
COP	Conference of the Parties
CTCN	Climate Technology Centre and Network
ExCom	meeting of the Executive Committee of the Warsaw International Mechanism for Loss and Damage associated with Climate Change Impacts
FWG	Facilitative Working Group
GCF	Green Climate Fund
LCIPP	Local Communities and Indigenous Peoples Platform
LEG	Least Developed Countries Expert Group
NELs*	expert group on non-economic losses
non-Annex I Party	Party not included in Annex I to the Convention
PCCB	Paris Committee on Capacity-building
SCF	Standing Committee on Finance
SOEs*	expert group on slow onset events
TEC	Technology Executive Committee
TEG-CRM	technical expert group on comprehensive risk management
TFD**	task force on displacement
WIM	Warsaw International Mechanism for Loss and Damage associated with Climate Change Impacts
YOUNGO constituency	constituency of youth non-governmental organizations

---

\* Used only in the figures.

\*\* Used only in the figures and in annex I.

## **I. Introduction**

### **A. Mandate**

1. COP 19 established the WIM to address loss and damage associated with the impacts of climate change, including extreme events and slow onset events, in developing countries that are particularly vulnerable to the adverse effects of climate change,<sup>1</sup> and established an executive committee to guide implementation of the functions of the WIM.<sup>2</sup> Article 8, paragraph 2, of the Paris Agreement provides that the WIM shall be subject to the authority and guidance of the CMA.

2. COP 19 requested the WIM Executive Committee to report annually to the COP through the subsidiary bodies and make recommendations, as appropriate.<sup>3</sup>

3. CMA 2 requested the Executive Committee to include in its annual reports information from organizations, bodies, networks and experts that have reported on their progress in providing technical assistance to developing countries under the Santiago network for averting, minimizing and addressing loss and damage associated with the adverse effects of climate change, which was established as part of the WIM.<sup>4</sup>

4. Furthermore, COP 22 requested all constituted bodies under the Convention to include in their regular reports information on progress towards integrating a gender perspective into their processes.<sup>5</sup>

### **B. Scope of the report**

5. This document contains information on organizational and procedural matters of the Executive Committee and on progress related to its institutional arrangements made during the reporting period (21 November 2020 to 31 July 2021).

6. Two addenda will follow: one containing details additional to the information in chapter IV below related to provision of technical assistance to developing countries under the Santiago network (FCCC/SB/2021/4/Add.1); and another with substantive information on progress in implementing the five-year rolling workplan of the Executive Committee, including through the work of its expert groups, from 21 November 2020 to 30 September 2021, and on the outcomes of ExCom 14, scheduled to take place from 7 to 24 September 2021 (FCCC/SB/2021/4/Add.2).

### **C. Possible action by the subsidiary bodies**

7. The subsidiary bodies may wish to consider the information contained in this report and its addenda and to recommend draft conclusions or draft decisions on the basis of the work of the Executive Committee for consideration and adoption by the appropriate body or bodies.<sup>6</sup>

---

<sup>1</sup> Decision 2/CP.19, para. 1.

<sup>2</sup> Decision 2/CP.19, para. 2.

<sup>3</sup> Decision 2/CP.19, para. 3.

<sup>4</sup> Decision 2/CMA.2, paras. 43–45.

<sup>5</sup> Decision 21/CP.22, para. 14.

<sup>6</sup> Nothing in this report, including its issuance, prejudices Parties' views or prejudices outcomes on matters related to governance of the WIM.

## II. Organizational and procedural matters

### A. Meetings and events

8. ExCom 13 was held from 27 to 30 April 2021. The virtual meeting was open to observers via a live webcast. Recordings of the plenary discussions are available, together with the meeting documents, on the UNFCCC website.<sup>7</sup>

9. The following meetings also took place virtually during the reporting period:

(a) 1<sup>st</sup> meeting of the expert group on non-economic losses, on 15, 17 and 19 March 2021;<sup>8</sup>

(b) 3<sup>rd</sup> meeting of the TEG-CRM, on 24 March 2021;<sup>9</sup>

(c) 1<sup>st</sup> meeting of the expert group on slow onset events, on 12 and 19 April 2021;<sup>10</sup>

(d) 5<sup>th</sup> meeting of the task force on displacement, on 13 April 2021;<sup>11</sup>

(e) 1<sup>st</sup> meeting of the expert group on action and support, on 17, 19 and 27 May 2021;<sup>12</sup>

(f) First session of the 2<sup>nd</sup> meeting of the expert group on action and support, on 19 July 2021.<sup>13</sup>

10. In the second half of 2021, the Executive Committee plans to hold:

(a) ExCom 14, from 7 to 24 September (discontinuous);

(b) Two outreach events to engage with loss and damage contact points and UNFCCC national focal points on raising awareness of averting, minimizing and addressing loss and damage at the national level through technical products developed by the Executive Committee and its expert groups, on 14 September;

(c) The remaining sessions of the 2<sup>nd</sup> meeting of the expert group on action and support, before ExCom 14.

### B. Modalities and engagement

#### 1. Chairing arrangements and membership

11. COP 20 decided that members of the Executive Committee shall serve for a term of two years and be eligible to serve a maximum of two consecutive terms of office.<sup>14</sup> No members were elected during the reporting period. Owing to the postponement of COP 26 as a result of the pandemic, the Bureau of the governing bodies confirmed that the current membership of constituted bodies under the Convention, the Kyoto Protocol and the Paris Agreement may be extended until successors can be appointed or elected.

12. Malcolm Ridout (United Kingdom of Great Britain and Northern Ireland) and Le-Anne Roper (Jamaica), elected at ExCom 12 as Co-Chairs of the Executive Committee to serve for a term of one year, co-led the work of the Committee during the reporting period.

---

<sup>7</sup> <https://unfccc.int/event/WIMexcom13>.

<sup>8</sup> See <https://unfccc.int/event/NELs1> for the summary of proceedings and other information.

<sup>9</sup> <https://unfccc.int/event/TEG-CRM-3>.

<sup>10</sup> See <https://unfccc.int/event/SOEs1> for the summary of proceedings and other information.

<sup>11</sup> <https://unfccc.int/event/Excom/TFD5>.

<sup>12</sup> See <https://unfccc.int/event/ASEG1> for the summary of proceedings and other information.

<sup>13</sup> See <https://unfccc.int/event/ASEG2>.

<sup>14</sup> Decision 2/CP.20, para. 7.

**2. Progress towards integrating a gender perspective into the work of and processes related to the Executive Committee**

13. Regarding the gender composition of its members, the Executive Committee currently comprises 8 women (4 each from Annex I Parties and non-Annex I Parties) and 12 men. One of the Co-Chairs of the Committee is a woman, achieving gender parity in its leadership. A list of the Committee’s members as at 31 July 2021, which includes their membership in the expert groups, is contained in annex I.<sup>15</sup> See figure 1 for the gender composition of the five expert groups of the Executive Committee.

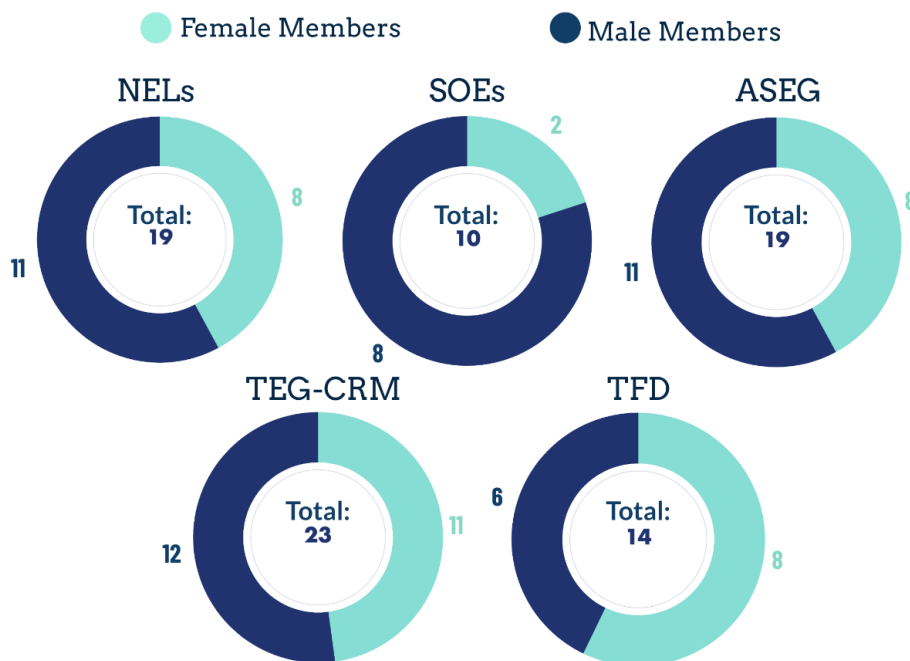
14. Regarding the participation of women in the regular meetings of the Executive Committee that took place during the reporting period, of the 171 participants at ExCom 13, 54 per cent were women.

15. The five-year rolling workplan of the Executive Committee considers women as one of the segments of the population that, owing to their specific characteristics, are already vulnerable to the impacts of climate change; therefore, gender is taken into account in a cross-cutting manner in implementing the workplan (FCCC/SB/2017/1/Add.1, annex, para. 2(b)).

16. To enhance understanding of the gender dimensions of non-economic losses associated with climate change impacts, the Executive Committee has engaged the United Nations Entity for Gender Equality and the Empowerment of Women as a member of the expert group on non-economic losses, which was launched during the reporting period.

Figure 1

**Gender composition of expert groups of the Executive Committee**



**3. Expert groups**

17. The Executive Committee engages as members of its expert groups a total of 67 technical experts who are representatives of external organizations or focal points of relevant bodies that are part of the UNFCCC process. Four Executive Committee members – two from Annex I Parties and two from non-Annex I Parties – are also nominated to each expert group.

<sup>15</sup> Or see the membership pages of the Executive Committee and each expert group available via <https://unfccc.int/wim-excom>.

**(a) Engagement of external entities**

18. Technical experts are nominated to expert groups by relevant organizations or invited by the Executive Committee to become members on the basis of their thematic, regional or transdisciplinary expertise. Additional selection criteria relate to gender and geographic distribution and diversity in organization type. Mindful of the long-term nature of matters related to loss and damage, the Executive Committee actively seeks the youth perspective in undertaking its technical work. The YOUNGO constituency has been a member of the task force on displacement since 2019, and during the reporting period, the Executive Committee engaged the YOUNGO constituency as a member of the expert group on non-economic losses so as to forge a direct channel of collaboration on that topic.

19. Experts contribute thought leadership to the Executive Committee on ways of providing developing countries with the technical support they need for averting, minimizing and addressing the risks that arise from climate change impacts. In keeping with the broad nature of thematic areas under the WIM, external expert members of the groups have wide-ranging expertise covering adaptation, agriculture and land management, cultural heritage conservation, development, disaster risk management (including insurance), education, environment and biodiversity conservation, finance, food security, gender mainstreaming, humanitarian affairs, human mobility, indigenous peoples’ matters, and systematic observation and climate services.

20. The Executive Committee leverages the wealth of existing data, information and knowledge accumulated by the communities of practice associated with these expert members, as well as the modalities and procedures already in place for providing relevant technical support, to assist developing countries in managing risks in specific sectors, systems and regions. Similarly, technical expert members act within their communities to catalyse the integration of loss and damage perspectives into knowledge management and other activities.

**(b) Engagement of constituted bodies**

21. The Executive Committee invites representatives of relevant constituted bodies to become members of its expert groups in order to improve the coherence of support provided under the Convention and the Paris Agreement for actions relevant to averting, minimizing and addressing loss and damage associated with climate change impacts. This engagement opens direct channels of communication that enable a timely information flow to advance specific areas of work. This collaboration modality also increases the accessibility of information on loss and damage synthesized by the Executive Committee to other constituted bodies – information that can inform and ultimately enhance synergies in their work.

22. During the reporting period, the Executive Committee engaged the CTCN, the LCIPP FWG, the PCCB, the SCF and the TEC as members of its expert groups, and reinforced its engagement with the AC and the LEG (see the table below for details).

**Constituted body members of the expert groups of the Warsaw International Mechanism Executive Committee**

<i>Constituted body</i>	<i>Expert groups of the Executive Committee</i>
AC	Task force on displacement, expert group on non-economic losses
CTCN	Expert group on action and support
LCIPP FWG	Expert group on non-economic losses
LEG	Task force on displacement, expert group on non-economic losses
PCCB	Expert group on action and support
SCF	Expert group on action and support
TEC	Expert group on action and support

### III. Institutional arrangements under the Executive Committee

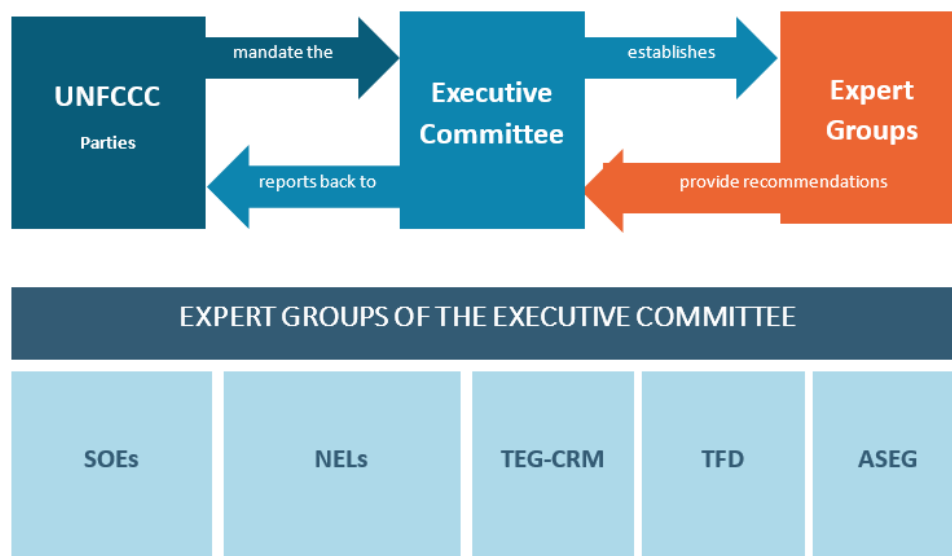
23. The Executive Committee may establish expert groups, subcommittees, panels, thematic advisory groups or task-focused ad hoc working groups to help it guide implementation of the WIM (see figure 2).<sup>16</sup> Each expert group has a plan of action via which it assists the Executive Committee in fulfilling mandates from the COP or the CMA and undertaking activities under the strategic workstreams of the Committee’s five-year rolling workplan.<sup>17</sup> Expert groups develop their draft rolling plans of action at their first meeting.

24. During the reporting period, the Executive Committee operationalized three expert groups, focusing on slow onset events, non-economic losses, and action and support respectively. The Committee endorsed the draft plans of action of the expert groups on slow onset events and non-economic losses at ExCom 13 and that of the expert group on action and support intersessionally, by virtual means, on 25 June 2021.

25. With the launch of the three new expert groups, the Executive Committee has now established a foundation of expertise corresponding to all five strategic workstreams of its five-year rolling workplan<sup>18</sup>. Organizational details of the new expert groups are presented in the remainder of this chapter (III.A–C below).

Figure 2

**Expert groups of the Warsaw International Mechanism Executive Committee**



#### A. Expert group on slow onset events

26. During the reporting period, the Executive Committee invited eight experts to join this group and thereby assist in implementing strategic workstream (a) of its five-year rolling workplan and other mandates related to slow onset events.<sup>19</sup> The Committee held the first meeting of the group, comprising two live face-to-face sessions, to develop its plan of action (contained in annex II).<sup>20</sup>

<sup>16</sup> Decision 2/CP.20, para. 8.

<sup>17</sup> The plan of action of each expert group is available from the group’s landing page, accessible via <https://unfccc.int/wim-excom>.

<sup>18</sup> Available at <https://unfccc.int/process/bodies/constituted-bodies/executive-committee-of-the-warsaw-international-mechanism-for-loss-and-damage-wim-excom/workplan>.

<sup>19</sup> Slow onset events are the risks and impacts associated with increasing temperatures, desertification, loss of biodiversity, land and forest degradation, glacial retreat and related impacts, ocean acidification, sea level rise and salinization.

<sup>20</sup> Available at [https://unfccc.int/sites/default/files/resource/TOR\\_slow\\_onset\\_events.pdf](https://unfccc.int/sites/default/files/resource/TOR_slow_onset_events.pdf).

27. Given the urgent need to raise awareness of the far-reaching impacts on livelihoods and economies from interrelated processes (e.g. salinization) and cascading impacts on key systems that lead to loss or damage (e.g. loss of biodiversity, land degradation, urban water scarcity, and losses from human mobility induced by these slow onset impacts), the initial phase of the group's rolling plan of action focuses on glacier retreat, sea level rise and salinization, and desertification. The overarching aim of the first phase of the plan of action is to identify, explore and promote potential policies that could advance efforts in addressing these three slow onset events.

28. The expert group thus issued a public call to identify ideas for innovative and impactful policies linked to the three slow onset events including existing solutions that hold promise for wide application and those that could lead to significant outcomes if implemented at scale.<sup>21</sup> A selection of these ideas will be showcased at relevant events. The group's next action item involves providing advice and support for integrating these policy ideas and solutions into work under the WIM and in national planning and policymaking processes.

## **B. Expert group on non-economic losses**

29. During the reporting period, the Executive Committee invited eight experts and two organizations to join this group and thereby assist in implementing strategic workstream (b) of its five-year rolling workplan and other mandates related to non-economic losses. The Committee held the first meeting of the group, comprising three live face-to-face sessions and work via a dedicated online collaboration platform, to develop its plan of action (contained in annex IV).

30. The expert group underlined the importance of clarifying how countries are currently addressing different types of non-economic losses, including associated reporting and knowledge-sharing processes and profiling the target audience of the technical outputs of the group in order to scope further needs and ensure the group will add value in this space. The discussions at its first meeting pointed to the need to identify networks and partnerships that the group could leverage in co-producing knowledge products for dissemination through established outreach channels and in collaboratively organizing capacity-building events.

31. The plan of action has three clusters around which the mandated activities, as set out in the group's terms of reference,<sup>22</sup> are organized: (1) conducting a stocktake of data, tools and knowledge; (2) raising awareness and devising outreach and support strategies; and (3) enhancing technical capacity and catalysing support, including by developing technical guides.

32. The group plans to develop recommendations and provide them to the Executive Committee in 2022. These recommendations will be based on the results from implementing the group's rolling plan of action.

## **C. Expert group on action and support**

33. During the reporting period, the Executive Committee invited 14 organizations to join this group and thereby assist in implementing strategic workstream (e) of its five-year rolling workplan and other mandates related to action and support. The Committee held the first meeting of the group, comprising three live face-to-face sessions and work via a dedicated online collaboration platform, to develop its plan of action (contained in annex III).

34. In elaborating its draft rolling plan of action, the group first compiled an inventory of relevant ongoing or planned work by technical expert members' affiliated organizations relating to action and support for averting, minimizing and addressing loss and damage. Given the significant amount of this work, the plan of action was designed to reduce shortcomings or close gaps in existing action and support while avoiding duplication of

---

<sup>21</sup> <https://unfccc.int/topics/adaptation-and-resilience/workstreams/loss-and-damage-ld/executive-committee-of-the-warsaw-international-mechanism-for-loss-and-damage/global-call-for-innovative-policy-solutions-in-averting-minimizing-and-addressing-loss-and-damage>.

<sup>22</sup> Available at [https://unfccc.int/sites/default/files/resource/TOR\\_non-economic\\_losses.pdf](https://unfccc.int/sites/default/files/resource/TOR_non-economic_losses.pdf).



effort. The indicative time frame for producing outputs by the group aligns with existing relevant processes, for instance, with the annual process of the SCF and respective timelines for providing inputs to the draft guidance to the operating entities of the Financial Mechanism and developing recommendations for the Executive Committee for consideration by Parties.

35. Owing to time constraints, the group could not complete its deliberations on some activities during its first meeting, including on potential topics for scope of work (c) (technical guides) in the group's terms of reference and areas of collaboration with other constituted bodies and organizations under scope of work (d).<sup>23</sup> For these activities, the group compiled for its use in future discussions initial ideas that could inform implementation of the draft plan of action. The group also plans to maintain the inventory mentioned in paragraph 34 above on a rolling basis and use it as a source of information for the group to draw on in implementing its activities.

#### **IV. Information reported by organizations providing technical assistance to developing countries under the Santiago network**

36. CMA 2 established, as part of the WIM, the Santiago network for averting, minimizing and addressing loss and damage associated with the adverse effects of climate change to catalyse the technical assistance of relevant organizations, bodies, networks and experts for the implementation of relevant approaches at the local, national and regional level in developing countries that are particularly vulnerable to the adverse effects of climate change, and invited those organizations, bodies, networks and experts to report on their progress to the Executive Committee. Furthermore, it requested the Executive Committee to include in its annual reports relevant information from the organizations, bodies, networks and experts that have reported on their progress.<sup>24</sup>

37. As at 30 July, information has been submitted by the Food and Agriculture Organization of the United Nations, the United Nations Environment Programme, the United Nations Office for Disaster Risk Reduction, and the World Food Programme.<sup>25</sup> An addendum to this report will provide details on the information submitted by these organizations (see para. 6 above).

---

<sup>23</sup> The terms of reference are available at [https://unfccc.int/sites/default/files/resource/TOR\\_action\\_and\\_support.pdf](https://unfccc.int/sites/default/files/resource/TOR_action_and_support.pdf).

<sup>24</sup> Decision 2/CMA.2, paras. 43–45.

<sup>25</sup> Available at <https://www4.unfccc.int/sites/submissionsstaging/Pages/Home.aspx>.

**Annex I****Members of the Executive Committee of the Warsaw International Mechanism and the expert groups they serve, as at July 2021**

[English only]

<i>Member</i>	<i>Constituency/group</i>	<i>Party</i>	<i>Expert group</i>
Alpha Kaloga	Non-Annex I Parties/African States	Guinea	Action and support
Dawn Pierre-Nathaniel	Non-Annex I Parties	Saint Lucia	Action and support
Farhan Akhtar	Annex I Parties	United States of America	Action and support
Jelena Milos	Annex I Parties	European Union	Action and support
Adao Soares Barbosa	Non-Annex I Parties/least developed countries	Timor-Leste	Non-economic losses
Jerome Ilagan	Non-Annex I Parties	Philippines	Non-economic losses/slow onset events
Kajsa Fernström Nåtby	Annex I Parties	Sweden	Non-economic losses
Valeriy Sedyakin	Annex I Parties	Russian Federation	Non-economic losses
Antonio Canas	Non-Annex I Parties/Latin American and Caribbean States	El Salvador	Slow onset events
Muhammad Imran Khan	Non-Annex I Parties/Asia-Pacific States	Pakistan	Slow onset events
Malcolm Ridout	Annex I Parties	United Kingdom of Great Britain and Northern Ireland	Slow onset events
Penehuro Lefale	Annex I Parties	New Zealand	Slow onset events
Nedal Katbeh-Bader	Non-Annex I Parties	State of Palestine	TEG-CRM
Le-Anne Roper	Non-Annex I Parties/Latin American and Caribbean States	Jamaica	TEG-CRM
Viktoriiia Shtets	Annex I Parties	Ukraine	TEG-CRM
Alfonso Pino Maeso	Annex I Parties	Spain	TEG-CRM
Pepetua Election Latasi	Non-Annex I Parties/Asia-Pacific States	Tuvalu	TFD
Sumaya Zakieldean	Non-Annex I Parties/African States	Sudan	TFD
Cornelia Jäger	Annex I Parties	Austria	TFD
Russell Miles	Annex I Parties	Australia	TFD

## Annex II

### Expert group on slow onset events: rolling plan of action

38. At its 1<sup>st</sup> meeting, the expert group on slow onset events decided to take the following overarching approach to its first rolling plan of action.

39. Recognizing the far-reaching impacts of slow onset events on livelihoods and economies, which can manifest simultaneously in different territories and landscapes, the expert group will focus the initial phase of its first rolling plan of action on selected water-related slow onset events: glacial retreat, sea level rise, and desertification. In doing so, related processes such as salinization and cascading effects that impact, for example, agricultural practice and lead to issues such as loss of biodiversity, land degradation, water scarcity in urban and other contexts, and human mobility will be taken into account.

40. The aim of the initial phase of the plan of action will be to identify (1) examples of projected compound risks and impacts associated with the selected slow onset events on livelihoods in varying contexts in developing countries that are particularly vulnerable to the adverse effects of climate change; and (2) steps that governments can take to respond to these risks in a timely manner, taking into account regional particularities, traditional knowledge and local practices.

41. The thematic lead/co-leads are as follows:

- (a) **Glacial retreat:** Ruben Basantes/Parashram Jakappa Patil
- (b) **Sea level rise:** Jaroslav Mysiak/Albert Salamanca and Akhilesh Surjan
- (c) **Desertification:** Bettina Koelle/Musonda Mumba and Akhilesh Surjan

42. The expert group will review the progress of its plan of action annually and update and/or adjust it as needed.

#### Rolling plan of action

<i>No.</i>	<i>Activity</i>	<i>Indicative timeline</i>
1.	<p>Convene three expert meetings to unpack the impacts on livelihoods and implications for critical systems of sea level rise, salinization, glacial retreat and desertification, and for experts to ‘pitch’ policy and practical solutions:</p> <ul style="list-style-type: none"> <li>- Desk review and/or targeted stocktaking exercise to complement and/or support the findings from the expert meetings. This will include reviewing special journal issue articles on slow onset events, national adaptation plans, nationally determined contributions, knowledge products under the Nairobi work programme on impacts, vulnerability and adaptation to climate change and work under the WIM.</li> </ul> <p>Deliverables: compilation of data and information; mapping of key stakeholders.</p>	By the end of September 2021
2.	<p>Develop scenarios, guidance and/or strategy in relation to the steps necessary to understand and plan for practical action and policy responses to the impacts and implications unpacked under activity 1:</p> <ul style="list-style-type: none"> <li>- At the regional, national and community level;</li> <li>- Taking into account the full spectrum of the climate risk management process: impact assessment and identification of options for reducing negative impacts; practical solutions to manage risks; assessment of capacity gaps and needs; identification of resources, including finance, for implementing solutions;</li> <li>- Possibly using a case study approach.</li> </ul> <p>Deliverables: key messages and/or pitch; guidance material; webinars and other types of learning events; catalogue of approaches; set of recommendations for targeted stakeholders (possibly in response to specific requests).</p>	Second half of 2021 onward
3.	<p>Provide technical advice and support to developing countries on integrating consideration of impacts associated with slow onset events and applicable responses into national planning and policymaking processes, taking into account regional particularities, traditional knowledge and local practices.</p>	2022 onward

<i>No.</i>	<i>Activity</i>	<i>Indicative timeline</i>
	Activities from the terms of reference of the expert group to be further defined: <ul style="list-style-type: none"><li>- Define topics of the technical guides of the expert group (to be endorsed by the Executive Committee, which should suggest additional topics as necessary);</li><li>- Produce guide(s).</li></ul>	To be determined

---

## Annex III

### Expert group on action and support: rolling plan of action

<i>Scope of work as per the terms of reference of the expert group on action and support</i>	<i>Products/outputs</i>	<i>Indicative time frame for producing outputs</i>	<i>Indicative steps towards delivering products/outputs</i>
<p>a.1) Activities referred to in paragraph 37 of decision 2/CMA.2: Executive Committee to further engage and strengthen its dialogue with the SCF by providing input in line with decision 2/CP.19, paragraph 5(c)(ii), to the SCF when, in accordance with its mandate, it provides information, recommendations and draft guidance relating to the operating entities of the Financial Mechanism under the Convention and the Paris Agreement, as appropriate</p> <p>Co-leads: Diann Black-Layne, Randy Caruso</p>	<ul style="list-style-type: none"> <li>Written inputs to draft guidance relating to the operating entities of the Financial Mechanism under the Convention and the Paris Agreement, as appropriate, on financial matters related to loss and damage (inputs to be forwarded to the Executive Committee)</li> </ul>	<p>Aligned with the annual process and timeline of the SCF providing inputs to the draft guidance (usually in September–October each year)</p>	<ul style="list-style-type: none"> <li>Compile written inputs from members of the expert group on action and support on the basis of the products/outputs under (a.2)–(f) of this rolling plan of action</li> <li>Consider this matter under a standing agenda item during regular meetings of the expert group on action and support with appointed SCF representatives of Parties included in Annex I to the Convention and Parties not included in Annex I to the Convention</li> </ul>
<p>a.2) Activities referred to in paragraph 39 of decision 2/CMA.2: Executive Committee, in collaboration with the GCF, as an operating entity of the Financial Mechanism, to clarify how developing country Parties may access funding from the GCF for the development of funding proposals related to the strategic workstreams of the five-year rolling workplan of the Executive Committee, consistently with paragraph 38 of that decision, and to include information thereon in its annual reports</p> <p>Co-leads: Mark Bynoe, Rajiv Garg</p>	<ul style="list-style-type: none"> <li>Periodic summary of the types of project funded by the GCF related to the strategic workstreams of the five-year rolling workplan and of the financial instruments used to fund them</li> <li>Compilation of lessons learned, good practices and challenges related to the GCF investments identified above</li> <li>Range of sample funding proposals</li> </ul>	<p>Initially by September 2021 and updated annually thereafter</p> <p>Initially by September 2021 and updated annually thereafter</p> <p>2022</p>	<ul style="list-style-type: none"> <li>Use the workstreams of the five-year rolling workplan as a basis for identifying GCF investments related to averting, minimizing and addressing loss and damage (with inputs from other WIM expert groups and the GCF secretariat, as appropriate)</li> <li>Compile and analyse GCF investment activities/financial instruments related to the strategic workstreams and identify lessons learned, good practices, areas for replication and scaling up, and gaps on the basis of project reviews and information from countries and stakeholders (including via the activities set out under (d)–(f) of this draft rolling plan of action</li> </ul>

<i>Scope of work as per the terms of reference of the expert group on action and support</i>	<i>Products/outputs</i>	<i>Indicative time frame for producing outputs</i>	<i>Indicative steps towards delivering products/outputs</i>
<p>b) Collection, compilation and dissemination of information on available sources of support under and outside the Convention and the Paris Agreement for activities relevant to averting, minimizing and addressing loss and damage in developing country Parties</p> <p>Co-leads: Malvern Chirume, Nisha Krishnan, Nicolina Lamhauge</p>	<ul style="list-style-type: none"> <li>• Collection and mapping of available sources of support, including the GCF and other sources of support at the national, regional and global level, in a user-friendly manner, for activities related to averting, minimizing and addressing loss and damage</li> <li>• Accessible products, for example infographics, animations and web-based products, related to each of the five strategic workstreams to introduce available sources of support (products should be visually appealing and user-friendly, e.g. interactive, to the extent possible)</li> </ul>	<p>In 2021 and on a continuous basis to integrate updates</p>	<p>and experience and networks of members of the expert group on action and support)</p> <ul style="list-style-type: none"> <li>• Develop and utilize user-friendly tools to help disseminate information on how developing countries may access funding from the GCF, including examples of successful GCF-funded activities (e.g. through the activities set out under (c) and (e) of this draft rolling plan of action)</li> <li>• Conduct stocktaking of previous analyses of action and support under the WIM with a view to further understanding available sources of support, identifying possible gaps and challenges and providing recommendations for improving the compilation of available sources of support<sup>6</sup></li> <li>• Map identified sources of support against activities for averting, minimizing and addressing loss and damage, ranging from pre-emptive action and contingency/risk transfer to post-impact measures (in collaboration with relevant bodies and organizations as part of activities set out under (d) of this draft rolling plan of action)</li> <li>• Determine the target audience, including other constituted bodies, of the expected outputs and identify dissemination strategies</li> </ul>
<p>c) Collaboration with the thematic expert groups of the Executive Committee to undertake the work referred to in paragraph 26 of decision 2/CMA.2: the Executive Committee and its thematic expert groups to develop technical guides within their work</p>	<ul style="list-style-type: none"> <li>• User-friendly technical guides on topics in the thematic area of the expert group on action and support catered to specific country contexts and types of climate impact (in collaboration with</li> </ul>	<p>On a rolling basis, with the possible topics for the guides to be agreed by the end of 2021</p>	<ul style="list-style-type: none"> <li>• Engage with other expert groups to define topics and develop outlines of the technical guides for clearance by the Executive Committee</li> </ul>

<i>Scope of work as per the terms of reference of the expert group on action and support</i>	<i>Products/outputs</i>	<i>Indicative time frame for producing outputs</i>	<i>Indicative steps towards delivering products/outputs</i>
<p>in their respective thematic areas, avoiding duplication of work across workstreams<sup>b</sup></p> <p>Co-leads: Nisha Krishnan, Nicolina Lamhauge, Daniel Osgood</p>	<p>the other thematic expert groups and avoiding duplication of efforts)</p>		<ul style="list-style-type: none"> <li>Produce user-friendly technical guides using accessible products, for example infographics and animations, as a means to disseminate this information (resources permitting)</li> </ul>
<p>d) Collaboration with relevant bodies and organizations under and outside the Convention and the Paris Agreement pursuant to decision 2/CP.19, paragraph 5(c)(iii)</p>	<ul style="list-style-type: none"> <li>Collaboration on delivering an initial set of outputs, as identified under (a)–(f) of this draft rolling plan of action</li> <li>Identification of further activities/outputs to be delivered collaboratively at the first meeting of every year</li> </ul>	<p>On a continuous basis, with possible areas for collaboration to be discussed and agreed at the first meeting of every year</p>	<ul style="list-style-type: none"> <li>Identify opportunities for collaboration with other bodies and organizations for “facilitating the mobilization and securing of expertise, and enhancement of support, including finance, technology and capacity-building, to strengthen existing approaches and, where necessary, facilitate the development and implementation of additional approaches to address loss and damage associated with climate change impacts, including extreme weather events and slow onset events”</li> <li>Identify areas in which to undertake collaborative activities, including by discussing relevant ongoing work by member organizations of the expert group on action and support, with a view to developing possible areas of collaboration (1) with expert group members in undertaking this draft rolling plan of action; (2) with other expert groups of the Executive Committee; and (3) with other constituted bodies and the operating entities of the Financial Mechanism<sup>c</sup></li> </ul>
<p>e) Organization of events in conjunction with relevant meetings and conferences, including the NAP Expo and regional events, to share information and experience relating to accessing available sources of support for averting, minimizing and addressing loss and damage associated with the adverse effects of climate change, in</p>	<ul style="list-style-type: none"> <li>Organization of events</li> </ul>	<p>On a rolling basis, ensuring a lead time of at least two months between the identification and the organization of any planned event</p>	<ul style="list-style-type: none"> <li>Identify relevant/possible events at the global, regional and national level on the basis of the collection of bodies, organizations, initiatives and events identified under (d) of this draft rolling plan of action and as relevant for disseminating planned products/outputs, including by taking into account the relevant target audiences</li> </ul>

<i>Scope of work as per the terms of reference of the expert group on action and support</i>	<i>Products/outputs</i>	<i>Indicative time frame for producing outputs</i>	<i>Indicative steps towards delivering products/outputs</i>
collaboration with relevant constituted bodies and organizations under and outside the Convention and the Paris Agreement, as appropriate	<ul style="list-style-type: none"> <li>• Accessible products, for example infographics, animations and web-based products, on enabling conditions for effective implementation of risk transfer facilities and social protection schemes that highlight lessons learned, good practices, gaps and challenges (products should be visually appealing and user-friendly, e.g. interactive, to the extent possible)</li> </ul>	Initially in the second half of 2021 and on a continuous basis thereafter	<ul style="list-style-type: none"> <li>• Organize events in collaboration with relevant bodies and organizations</li> <li>• Identify and review case studies of existing risk transfer facilities, including parametric and microinsurance products, and social protection schemes at the regional, national and local level and collate experience relating to enabling conditions, including lessons learned, good practices, gaps and challenges (noting that some products, schemes and enabling conditions apply at multiple levels)</li> <li>• Identify and review approaches, including financial, technical and capacity-building support, to addressing existing gaps, challenges and further needs (in collaboration with the TEG-CRM where relevant)</li> </ul>
<p>f) Analysis and identification of enabling conditions for effective implementation of risk transfer facilities and social protection schemes in the context of comprehensive risk management, as appropriate</p> <p>Co-leads: Elizabeth Emanuel, Daniel Osgood, Emmanuel Seck</p>	<ul style="list-style-type: none"> <li>• Accessible products, for example infographics, animations and web-based products, on enabling conditions for effective implementation of risk transfer facilities and social protection schemes that highlight lessons learned, good practices, gaps and challenges (products should be visually appealing and user-friendly, e.g. interactive, to the extent possible)</li> </ul>	Initially in the second half of 2021 and on a continuous basis thereafter	<ul style="list-style-type: none"> <li>• Identify and review case studies of existing risk transfer facilities, including parametric and microinsurance products, and social protection schemes at the regional, national and local level and collate experience relating to enabling conditions, including lessons learned, good practices, gaps and challenges (noting that some products, schemes and enabling conditions apply at multiple levels)</li> <li>• Identify and review approaches, including financial, technical and capacity-building support, to addressing existing gaps, challenges and further needs (in collaboration with the TEG-CRM where relevant)</li> </ul>
Development of recommendations for the Executive Committee for consideration by Parties	<ul style="list-style-type: none"> <li>• Set of recommendations for consideration by Parties</li> </ul>	Early September (yearly cycle)	<ul style="list-style-type: none"> <li>• Develop recommendations for the Executive Committee on the basis of the outcomes of activities and deliverables of the expert group on action and support</li> </ul>

<sup>a</sup> Previous analyses include the outcomes of the 2016 SCF Forum on financial instruments that address the risks of loss and damage associated with the adverse effects of climate change; the report on the 2018 Suva expert dialogue; the 2019 joint Technology Executive Committee–WIM Executive Committee policy brief on technologies for averting, minimizing and addressing loss and damage in coastal zones; biennial assessments of the SCF; and the 2019 technical paper on the sources of and modalities for accessing financial support for addressing loss and damage.

<sup>b</sup> These technical guides shall include sections on (1) risk assessment, including long-term risk assessment, of climate change impacts; (2) approaches to averting, minimizing and addressing loss and damage associated with such risk assessment; (3) resources available for supporting such approaches; and (4) monitoring systems for assessing the effectiveness of these approaches.

<sup>c</sup> See also the activities set out under (a.2) of this draft rolling plan of action.



## Annex IV

### Expert group on non-economic losses: rolling plan of action

<i>Cluster</i>	<i>Reference to scope of work as per terms of reference</i>	<i>Activities</i>	<i>Deliverables</i>	<i>Indicative time frame</i>
Stocktaking of relevant data, tools and knowledge	Collecting and synthesizing information on available tools for assessing non-economic losses and disseminating or otherwise making available that information, including via the UNFCCC website  Coordinators: Deissy Martinez Baron, Seyni Salack	1) Collect information, on a rolling basis, on available tools for assessing non-economic losses and update the technical paper on non-economic losses (in collaboration with other WIM expert groups)  The updated technical paper will inform activities in the awareness-raising, outreach and support strategy cluster	Updated technical paper on non-economic losses (FCCC/TP/2013/2)  Database of information on tools for assessing non-economic losses, including lists of outstanding information gaps, as part of existing WIM information systems	First half of 2021  Database to be updated on a rolling basis
		2) Produce synthesis products on tools, including lessons learned, best practices and information gaps, for assessing non-economic losses as part of the awareness-raising, outreach and support strategy, including by building on existing information needs assessments as well as conducting new ones  Existing information needs assessments may include those conducted under the Lima Adaptation Knowledge Initiative and the Nairobi work programme or the national adaptation plan process as well as the WIM. New assessments may be conducted in collaboration with target groups/stakeholders, e.g. at capacity-building events like those under the awareness-raising, outreach and support strategy below	Synthesis products on tools for assessing non-economic losses, including lessons learned, best practices and information gaps, targeted at specific user groups	Second half of 2021
Awareness-raising, outreach and support strategy	Developing an awareness-raising strategy and related knowledge products, outreach material and key messages on non-economic losses	3) Develop and continually update a set of key messages on the WIM, loss and damage and non-economic losses based on the updated technical paper under activity 1 above (in collaboration with other WIM expert groups)  4) Develop, and regularly disseminate, targeted outreach and awareness-raising material tailored to the needs of different stakeholders profiled at the global, regional, subregional and local level, building	Key messages (on the WIM/loss and damage in general and specific to the expert group) for awareness-raising and outreach purposes tailored to different target audiences  Outreach material on (a) existing information collected through the stocktake, and (b) knowledge	First set of messages in first half of 2021, and to be updated on a rolling basis  Outreach material on (a) in second half of 2021; outreach material on (b) in first half of 2022

<i>Cluster</i>	<i>Reference to scope of work as per terms of reference</i>	<i>Activities</i>	<i>Deliverables</i>	<i>Indicative time frame</i>
	Coordinators: Eustace Crispin d'Auvergne, Godwell Nhamo	on the key messages developed under activity 3 above (in collaboration with other WIM expert groups and partners and possibly to be reviewed by peers and stakeholders)	products and activities of the expert group	
	Fostering existing and/or building new partnerships and otherwise cooperating with stakeholders engaged in work on non-economic losses	5) Map potential partners working on non-economic losses and engage in relevant activities under the plan of action (in collaboration with other WIM expert groups, as appropriate)	Partnership engagement strategy, with due consideration of geographic and thematic distribution	First half of 2021, and to be updated on a rolling basis
	Coordinators: Shella Biallas, Sisira Madurapperuma			
	Inviting partners to coordinate related capacity-building events at the regional and national level to identify capacity needs and support with a view to supporting the efforts of developing countries to assess and address non-economic losses	6) Scope and prioritize regional/national events and mobilize partners to collaborate with the expert group in using these events to identify and address capacity and support needs of developing countries in relation to assessing and addressing non-economic losses, building on gaps identified under activities 1 and 2 above (in collaboration with other WIM expert groups, as appropriate)	Partnership engagement strategy tailored to capacity-building events  Set of key findings and recommendations derived from the capacity-building events	Initial scoping in first half of 2021, and continuous thereafter  Continuous, with final list of key findings and recommendations in second half of 2022
	Coordinators: Eustace Crispin d'Auvergne, Verona Collantes-Lebale			
Enhancing technical guidance and catalysing support	Developing guidelines, jointly with the task force on displacement, as appropriate, on averting, minimizing and addressing non-economic losses in the context of human mobility	7) Form a small working group jointly with the TFD to outline the guidelines and produce a draft for consideration by the expert group, the TFD and, where appropriate, the Executive Committee, and finalize for subsequent dissemination	Final guidelines	First half of 2022

<i>Cluster</i>	<i>Reference to scope of work as per terms of reference</i>	<i>Activities</i>	<i>Deliverables</i>	<i>Indicative time frame</i>
	<p>Coordinators: Eustace Crispin d’Auvergne, Caroline Zickgraf</p> <p>Developing technical guides in its respective thematic area related to non-economic losses, avoiding duplication of work across workstreams</p> <p>Coordinators: Eustace Crispin d’Auvergne, Kristie Ebi, Godwell Nhamo, Caroline Zickgraf</p>	<p>8) Define topics on a rolling basis, as appropriate, develop an outline of the technical guides of the expert group and, subject to clearance by the Executive Committee, finalize the guides for production and dissemination</p> <p>9) Produce at least one guide per year on topics endorsed by the Executive Committee</p> <p>Possible topics for the first guide include:</p> <p>Consideration of non-economic losses in a national-level comprehensive risk management framework (a potential contribution to a cross-cutting guide involving all expert groups), in particular on identification and quantification of non-economic value and its inclusion in decision-making</p> <p>Human mobility impacts on indigenous or local knowledge, societal identity and cultural heritage: addressing loss and damage associated with climate change in the medium and long term (see activity 7 above)</p> <p>Addressing losses associated with the ecosystems–biodiversity–health nexus from the global to the local level</p> <p>Addressing losses associated with the loss of territory–ecosystem services–cultural heritage nexus</p>	<p>List of proposed technical guides of the expert group to be presented to the Executive Committee</p> <p>Technical guides produced and disseminated</p>	<p>First half of 2021, and a running list thereafter</p> <p>At least one per year</p>
Developing recommendations for the Executive Committee for consideration by Parties	All	10) Develop recommendations for the Executive Committee on the basis of the results of the implementation of the expert group’s activities and its deliverables	Set of recommendations	2022