

TEASER 6

Technical guide on integrating human mobility and climate change linkages into relevant national climate change planning processes



©Muse Mohammed

THE EXECUTIVE COMMITTEE OF THE WARSAW INTERNATIONAL MECHANISM FOR LOSS AND DAMAGE IS WORKING ON HUMAN MOBILITY ASSOCIATED WITH CLIMATE CHANGE IMPACTS

COP 21 established the Task Force on Displacement to develop recommendations for integrated approaches to avert, minimize, and address displacement related to the adverse impacts of climate change and entrusted the Executive Committee with its operationalization.

COP 24 welcomed the Task Force’s comprehensive assessment of broader issues of displacement related to climate change and adopted the set of recommendations thereon. The comprehensive assessment highlighted the importance of enhancing national policies, strategies, and legal frameworks to systematically incorporate relevant environmental and climate factors that influence patterns of human mobility, through a whole-of-government approach, and recommended relevant stakeholders to collaborate in supporting the implementation efforts at the national policy level. Parties are invited to integrate climate change-related human mobility challenges and opportunities into national planning processes, as appropriate, by drawing on available tools, guidance, and good practices, and consider communicating these efforts undertaken, as appropriate. The activities of the Task Force on Displacement contribute to this. The Executive Committee continues to work together with the Task Force to promote a common understanding of effective approaches to address climate-related human mobility issues with the aim of providing practical and user-friendly tools to assist developing countries in implementing these approaches effectively.

WHAT IS THIS KNOWLEDGE PRODUCT, AND HOW WILL IT BE USED?

What is it?

Technical guide on integrating human mobility and climate change linkages into relevant national climate change planning processes.

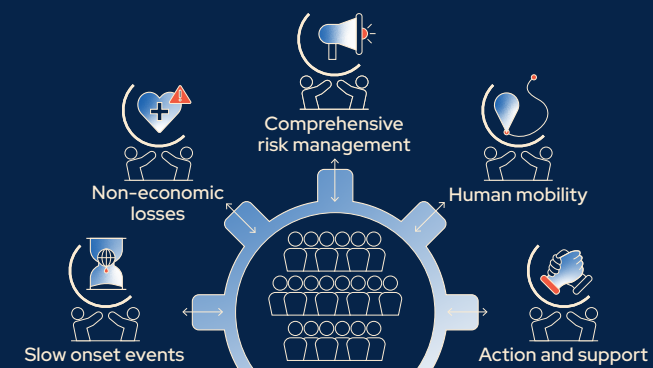
Mandate:

3rd Plan of action of the [Task Force](#) on Displacement, five-year rolling [workplan](#) of the Executive Committee of the Warsaw International Mechanism for Loss and Damage (Activities 10, 11, 13, 16, 17).

The product will provide concise and operational information for mainstreaming human mobility considerations into adaptation planning instruments in particular the National Adaptation Plan (NAP) as well as national reports such as the Adaptation Communication. It will be a step-by-step guide for the relevant stakeholders involved in the process of formulating and implementing NAPs, including different levels of government entities and policy stakeholders.

The technical guide will be developed according to the guidance in paragraph 26 of decision 2/CMA.2 on technical guides for loss and damage, and will also respond to the guidance from SBI 40 to organization developing supplements to the technical guidelines for the formulation and implementation of NAPs stressing the importance of the alignment of these supplement to the LEG Technical Guidelines. The guide will be used to support countries in integrating linkages between human mobility and climate change into relevant national climate change planning.

This guide supplements and leverages the other two technical guides to be rolled out in 2024 under the plan of action of the Task Force on Displacement on accessing finance for averting, minimizing, and addressing the impacts of displacement, and on averting, minimizing and addressing non-economic losses in the context of human mobility.



Under the [Warsaw International Mechanism](#) for Loss and Damage, knowledge, expertise and support are mobilized from a broad range of expert organizations and networks through the five thematic expert groups to advance work on slow onset events, non-economic losses, comprehensive risk management, displacement, and action and support. The [Executive Committee](#), which comprises 20 representatives from Parties, guides the implementation of the Mechanism. The thematic expert groups co-create knowledge products and undertake activities jointly with the Executive Committee of the Mechanism to promote integrated and coherent approaches to loss and damage associated with climate change impacts.

Introduction

What is this supplement about, who is the intended audience, and how to use this document?

Background

How are human mobility, including migration, displacement and planned relocation and climate change interlinked, and why does that matter for adaptation and climate-resilient development?

Integrating human mobility, including migration, displacement and planned relocation in National Adaptation Plans

What are NAPs? Why are NAPs important instruments for mainstreaming human mobility into adaptation planning?

Key steps for integrating human mobility, including migration, displacement and planned relocation into NAPs – detailing key steps with four main outcomes:

Outcome 1: Establishing, clarifying, and strengthening national coordination, steering mechanisms, and institutional arrangements for the NAP to include adequate consideration of human mobility, including migration, displacement and planned relocation, and identifying knowledge gaps.

Outcome 2: Strengthening the evidence and knowledge base on human mobility, including migration and displacement to support the formulation of NAPs.

Outcome 3: Supporting NAP implementation in relation to human mobility issues, including migration, displacement and planned relocation through capacity building of implementing bodies, sectoral entities, and sub-national actors with synergy at the regional level.

Outcome 4: Putting in place mechanisms for reporting, monitoring, and review of NAPs and adaptation progress that take due consideration of human mobility, including migration, displacement and planned relocation issues.

- The development of this product factors in stakeholder consultation with not only multiple sectoral government entities, but with gender experts, youth, indigenous peoples, and other vulnerable groups to capture different levels of perspectives on human mobility, including migration, displacement and planned relocation issues in the technical guide.
- The guide, in its draft stage and before submission to the Executive Committee, will be shared for comments and inputs with technical partners as well as country representatives through a widely accessible file-sharing platform.

Contact displacement@unfccc.int for more information on the work of the Task Force on Displacement.

PRACTICAL INFORMATION

- The development of this technical guide is co-led by the members of the Task Force on Displacement, representing the following organizations: IOM, ILO, and UNHCR. The draft versions will be consulted with the Least Developed Countries Expert Group.
- For more information on climate-induced displacement, visit the UNFCCC website on the [Task Force on Displacement](#).
- For more information on the Warsaw International Mechanism for Loss and Damage, visit the UNFCCC website on the [Executive Committee of the Warsaw International Mechanism](#).

Contact loss-damage@unfccc.int for the Warsaw International Mechanism for Loss and Damage Executive Committee



CONTACT
loss-damage@unfccc.int



United Nations
Climate Change

WIM@10