

TEASER 2

# The compendium on comprehensive risk management approaches vol.2

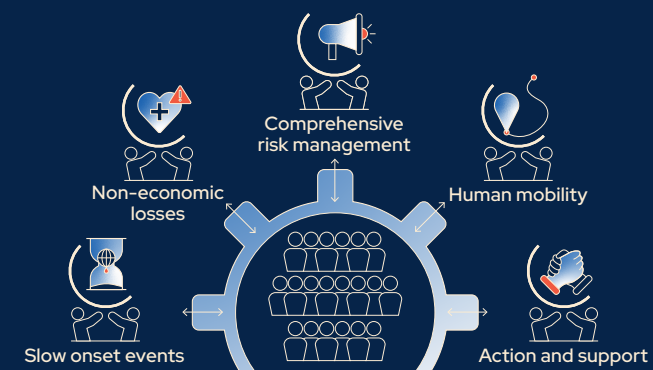


©Lavado Stubbs

## THE EXECUTIVE COMMITTEE OF THE WARSAW INTERNATIONAL MECHANISM FOR LOSS AND DAMAGE WORKS TO ENHANCE COOPERATION AND FACILITATION IN RELATION TO COMPREHENSIVE RISK MANAGEMENT APPROACHES

Comprehensive risk management approaches aim at addressing and building long-term resilience of countries, vulnerable populations and communities to loss and damage from extreme and slow onset events. Approaches include measures such as:

- Risk assessment, reduction, transfer and retention
- Emergency preparedness, including early warning systems
- Measures to enhance recovery and rehabilitation and build back/forward better
- Social protection instruments, including social safety nets, and
- Transformational approaches



Under the [Warsaw International Mechanism for Loss and Damage](#), knowledge, expertise and support are mobilized from a broad range of expert organizations and networks through the five thematic expert groups to advance work on slow onset events, non-economic losses, comprehensive risk management, displacement, and action and support. The [Executive Committee](#), which comprises 20 representatives from Parties, guides the implementation of the Mechanism. The thematic expert groups co-create knowledge products and undertake activities jointly with the Executive Committee of the Mechanism to promote integrated and coherent approaches to loss and damage associated with climate change impacts.

## WHAT IS THIS KNOWLEDGE PRODUCT, AND HOW WILL IT BE USED?

### What is it?

The *compendium on comprehensive risk management approaches vol.2* will showcase recent developments in applying comprehensive risk management for anticipating and responding to loss and damage at various levels of governance in developing countries.

### Mandate:

Activity 29, Strategic workstream (c) on enhancing cooperation and facilitation in relation to comprehensive risk management approaches in the five-year rolling [workplan](#) of the Executive Committee of the Warsaw International Mechanism for Loss and Damage.

The current [compendium](#) on comprehensive risk management approaches, first published in 2016 and last updated in 2019, contains a collection of good practices and lessons learned in relation to different facets of managing risks in an anticipatory manner at different levels of governance. Since then, the Technical Expert Group on Comprehensive Risk Management (TEG-CRM) that assisted the Executive Committee in guiding the implementation of the Warsaw International Mechanism for Loss and Damage, and other relevant stakeholders have led extensive research and activities to increase conceptual clarity on how countries and communities respond to the impacts that may result or have resulted in loss and damage, exacerbated by the interplay between various slow-onset and rapid-onset events. In addition, there has been growing recognition and application at different levels of various instruments, such as forecast-based finance, social protection, insurance and post-impact approaches.

The Compendium vol.2 will reflect recent developments in the conceptual framing and application of comprehensive risk management and transformational approaches. Drawing on good practices and lessons learned, it will identify ways to address the needs of at-risk countries and communities with respect to loss and damage, providing a guide to policies, standards, and instruments on the full range of climate-related risk management. It will help enhance understanding of and promote comprehensive risk management approaches in building long-term resilience of countries, vulnerable populations and communities.

## CONTENT OF THE KNOWLEDGE PRODUCT

The Compendium vol.2 will encompass the spectrum of actions required for addressing and building long-term resilience to loss and damage from the impacts of climate change, including rapid-onset events and slow-onset events covering (i) anticipatory action integrated into adaptation and disaster risk reduction, (ii) contingency measures, and (iii) short-, medium- and long-term response, rehabilitation and sustainable reconstruction.

A series of case studies on emerging practices will serve as the basis for key findings on ways in which countries and communities are averting, minimizing and addressing loss and damage. The selected case studies will illustrate how climate risks are assessed, taking into account loss and damage for informing policy combinations for reducing, transferring or retaining risk with compatible contingency arrangements. Most importantly, the case studies will spotlight how communities, countries and regions are recovering, rehabilitating from and re-building after the impacts are experienced in developing countries, in a manner that may transform how society approaches loss and damage associated with climate change impacts. The selection of case studies will ensure geographical representation across different levels of economic development.

A collaborative approach will be taken to develop the Compendium vol.2, drawing on the expertise of the TEG-CRM and other thematic expert groups of the Warsaw International Mechanism for Loss and Damage Executive Committee. Data and information will be collected through multiple sources, including a general call for case study submissions in addition to existing relevant information available in related work on loss and damage under the UNFCCC and the Paris Agreement, such as the ongoing practices showcased in the context of the Santiago Network regional scoping workshops and deliberations on funding arrangements and the fund, established in decisions 2/CP.27 and 2/CMA.4. The Compendium vol.2 will be published in the second half of 2024.



Information gathering on emerging good practices from multiple sources  
(Nov. 2023 - March 2024)



Collaborative and iterative drafting process with contributions from TEG-CRM and other expert groups as needed  
(1<sup>st</sup> half of 2024)



Online publication and launching  
(2<sup>nd</sup> half of 2024)

## GET INVOLVED

The Executive Committee invites relevant organizations, networks and experts to [submit case studies](#) on the application of comprehensive risk management and transformational approaches for anticipating and responding to loss and damage from the impacts of climate change, including rapid onset events and slow onset events.

## PRACTICAL INFORMATION

- The [2019 compendium on comprehensive risk management approaches](#) is available online.
- For more information on comprehensive risk management approaches, visit the UNFCCC website on [Comprehensive Risk Management](#).
- For more information on the Warsaw International Mechanism for Loss and Damage, visit the UNFCCC website on the [Executive Committee of the Warsaw International Mechanism](#).

Contact [loss-damage@unfccc.int](mailto:loss-damage@unfccc.int)



**CONTACT**  
[loss-damage@unfccc.int](mailto:loss-damage@unfccc.int)



United Nations  
Climate Change

WIM@10