

TEASER 1

An update to the technical paper on non-economic losses in the context of loss and damage associated with climate change impacts



©Gareth Moon

THE EXECUTIVE COMMITTEE OF THE WARSAW INTERNATIONAL MECHANISM FOR LOSS AND DAMAGE IS WORKING ON NON-ECONOMIC LOSSES

Climate change affects a wide range of social, economic and environmental systems, which can result in economic and non-economic loss and damage.

INDIVIDUALS



Life



Health



Human mobility

SOCIETY



Territory



Cultural Heritage



Indigenous knowledge



Societal/cultural identity

ENVIRONMENT



Ecosystem services



Biodiversity

Non-economic losses, such as loss of biodiversity, loss of territory, loss of societal or cultural identities and loss of belongingness due to human mobility, are not well understood, even less so, are the financial resource requirements to manage such losses. There is a growing recognition of the importance of safeguarding non-economic losses in the broader efforts on loss and damage. Considering these types of losses in planning and decision-making remains challenging, including finding appropriate methodologies for effectively integrating non-economic losses in dealing with loss and damage, which is an area of active research.

WHAT IS THIS KNOWLEDGE PRODUCT, AND HOW WILL IT BE USED?

What is it?

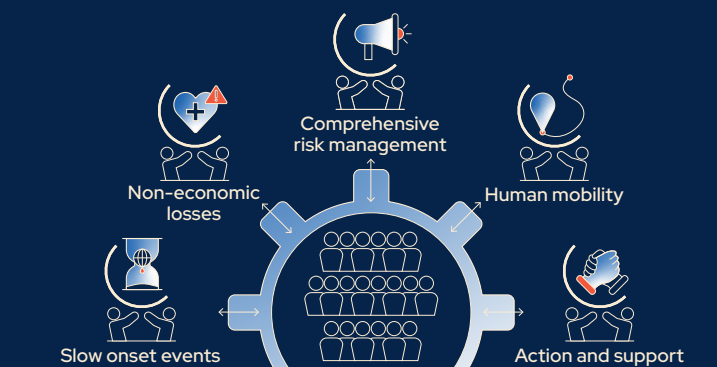
An update to the [technical paper](#) on non-economic losses, published in 2013.

Mandate:

[Plan of action](#) of the Expert Group on Non-economic losses, five-year rolling [workplan](#) of the Executive Committee of the Warsaw International Mechanism for Loss and Damage (Activities 10, 11, 16, 17, 23, 25).

This product will spotlight the recent progress and enhanced understanding of the policy and practical implications of impacts from non-economic losses. Drawing from how countries and communities are responding to key types of non-economic losses, it aims to capture emerging good practices from diverse contexts, presenting a “toolkit” of approaches.

The collected information will also feed into producing synthesis products on tools, key messages as well as outreach and awareness-raising materials tailored to the needs of different stakeholders profiled at the global, regional, subnational and local levels, under the Warsaw International Mechanism for Loss and Damage.



Under the [Warsaw International Mechanism](#) for Loss and Damage, knowledge, expertise and support are mobilized from a broad range of expert organizations and networks through the five thematic expert groups to advance work on slow onset events, non-economic losses, comprehensive risk management, displacement, and action and support. The [Executive Committee](#), which comprises 20 representatives from Parties, guides the implementation of the Mechanism. The thematic expert groups co-create knowledge products and undertake activities jointly with the Executive Committee of the Mechanism to promote integrated and coherent approaches to loss and damage associated with climate change impacts.

Key messages

Introduction

Brief overview of non-economic losses: Non-economic losses in the context of climate change

Building on the previous [technical paper](#) <FCCC/TP/2013/2>, this section will describe current understanding of real-life implications of the main types of non-economic losses, at all scales, the interlinkages among different types of losses, and how they manifest in the face of compounding and cascading effects of climate hazards and risks.

Spectrum of actions to address non-economic losses

The section comprises examples of how countries and communities are anticipating, preventing and responding to key types of non-economic losses to capture emerging good practices:

- From diverse contexts that can be scaled out in developing countries
- Technical and institutional arrangements required for implementing such approaches
- Necessary enabling environments and how organizations are currently supporting developing countries with the implementation of such approaches

Through the emerging good practices, the section aims to tease out success factors:

- For integrating key non-economic losses considerations in policies and planning
- In the immediate or early response efforts to degradation of health, ecosystems, cultural heritage and other key types of damages on the ground that are non-economic in nature at different levels
- In the long-term rehabilitation, rebuilding, recovery and resilience efforts for irreversible losses of a non-economic nature, such as loss of biodiversity, territory and life, and those induced by mobility, such as societal and cultural identity
- For engaging those that are at the forefront of climate change, such as women, youth, indigenous peoples, local communities and persons with disabilities

Key tools and methods

- Information collected for this section will be compiled into an inventory of key methods and tools most commonly employed in identifying non-economic loss aspects associated with climate impacts.
- A database on these tools will include information on capacity/resource requirements and access/utilization methods, and inform further knowledge products under the Warsaw International Mechanism.

- The Executive Committee invites relevant organizations, networks and experts to share information on tools, methods and approaches relevant to non-economic losses to inform the development of this knowledge product. Let us know how your organization would like to engage in the development of this knowledge product in 2024 through [this page](#).
- The Expert Group on Non-economic losses welcomes potential partners working on non-economic losses to engage in activities of the plan of action of the Expert Group. To submit your expression of interest, please [register here](#).

PRACTICAL INFORMATION

- For more information on non-economic losses, visit the UNFCCC website on the [Expert Group on Non-economic Losses](#).
- For more information on the Warsaw International Mechanism for Loss and Damage, visit the UNFCCC website on the [Executive Committee of the Warsaw International Mechanism](#).

