

KEY UPDATE FROM THE GEF CLIMATE FUNDS PROGRAMMING



Ladu Lemi, Climate Change Specialist



**Capacity building for accessing finance (Needs based
Climate Finance)-Addis, Virtual**

The GEF and it's Unique Role



Convention on
Biological Diversity



MINAMATA
CONVENTION
ON MERCURY



United Nations
Convention to Combat
Desertification



Stockholm Convention
on persistent organic
pollutants (POPs)



United Nations
Framework Convention on
Climate Change



As **financial mechanism**, GEF supports implementation of Conventions:

- ✓ National plan and strategy development
- ✓ Investing in national priorities towards Convention goals
- ✓ Convention reports and obligations
- ✓ Transparency enhancement
- ✓ Capacity building and technical assistance

GEF functions under **guidance/decisions** from Conferences of Parties (COPs) and is **accountable**:

- ✓ Participation in negotiations and mandated events
- ✓ GEF report highlighting response
- ✓ Response to Party inquiries

GEF: A Global Partnership

Largest environmental multi-donor trust fund in the world

186 MEMBER COUNTRIES

18 IMPLEMENTING AGENCIES



GEF TRUSTEE



GEF COUNCIL

STAP SCIENTIFIC AND TECHNICAL
ADVISORY PANEL
*Provides independent advice to the
Global Environment Facility*

IEC Independent
Evaluation Office
GLOBAL ENVIRONMENT FACILITY

GEF Family of Trust Funds

Trust Fund that serves BBNJ, CBD, CCD, Minamata Convention, Stockholm Convention, UNFCCC

GEF Trust Fund



Trust Funds that serve UNFCCCC

LDCF

SCCF



CBIT Trust Fund



Trust Fund that serves CBD

NPIF Fund

GBF Fund

GEF Climate Change Trust Funds

Adapting to climate change

Least Developed Countries Fund (LDCF)



**Established by COP7
in 2001**

Special climate Change Fund (SCCF)



Climate Change Mitigation

GEF Trust Fund Allocation for Climate Change Focal Area



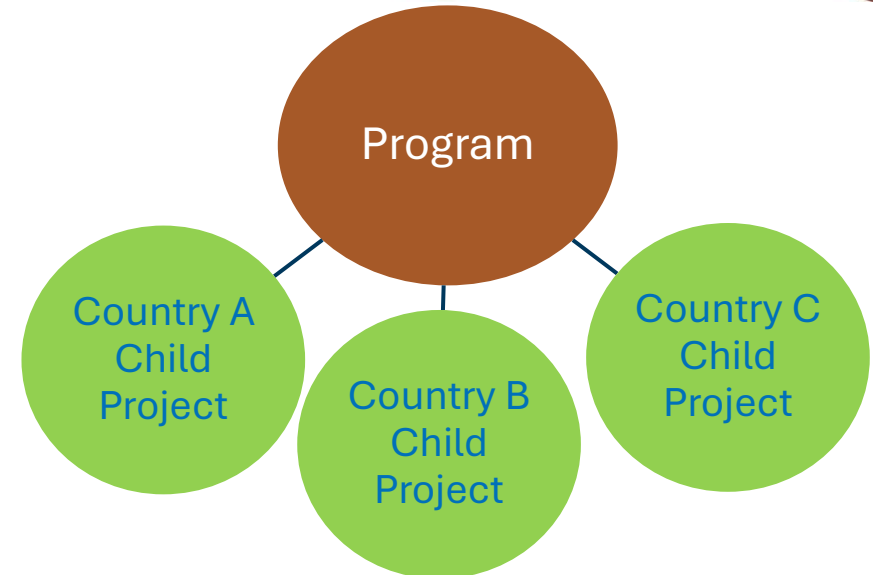
Capacity Building Initiative for Transparency (CBIT)



**Established by
COP21 in 2015**

GEF Project Modalities

- **Full-Sized Project (FSP):** over US\$5M
Approval by **Council** (twice a year & intersessional by mail)
- **Medium-Sized Project (MSP):** US\$5M or less
Approval by **GEF CEO** (on a rolling basis)
- **Program:** longer term and strategic arrangement
of individual interlinked projects that aim at achieving large-scale impact
- **Child Project:** an individual project under Program



The LDCF/SCCF Programming strategy 2022-2026



**To facilitate transformational adaptation in developing countries,
towards achieving the Paris Agreement's global goal on adaptation**

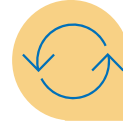
HIGHLIGHTS



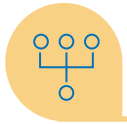
To facilitate transformational adaptation in developing countries, towards achieving the Paris Agreement's global goal on adaptation



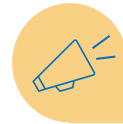
Build on strengths and value to address gaps, be innovative, inclusive, and agile



Major upgrading opportunity to catalyze transformational adaptation and contribute to Paris Agreement Global Goal on Adaptation



Positioned to generate and track multiple benefits and mobilize finance at scale, with GEF Trust Fund, GCF, and others



Informed by science and priorities, contributing to action and ambition in response to IPCC call for urgency

LDCF Priority themes for 2022-2026



Agriculture, food security and health

Heightened focus on community wellbeing

1



Water

Continued support to capture, store, conserve and enable easier and more reliable access to water

2



Early warning and climate information systems

Expand access and strive for greater user uptake

3



Nature-based solutions

High potential to deliver adaptation

4

LDCF priority areas for 2022-2026

PRIORITY AREA 1

Scaling up finance

- Policy coherence
- Institutional capacity
- Innovative financing mechanisms
- Tools and metrics

PRIORITY AREA 2

Strengthening innovation and private sector engagement

- Technology transfer and innovation
- MSME incubation and acceleration
- Inclusive microfinance
- Risk sharing to catalyze private investment
- Enabling private sector action

PRIORITY AREA 3

Fostering partnership for inclusion & whole-of-society approach

- Institutional strengthening and capacity building at all levels
- Partnerships with local organizations and systems to address social equity
- Innovative financing opportunities to support whole-of society approach



LDCF Financing Scenarios in GEF-8

*Initial Cap per Country
(46 LDCs at \$20 million
initial cap per country)*

\$920M



FLOOR

SCENARIO A

Total: \$1 billion

SCENARIO B

Total: \$1.3 billion

*Reserve to go
beyond initial cap
for national
projects*

\$193M

*Challenge
Program for
Adaptation
Innovation*

\$30M

\$40M

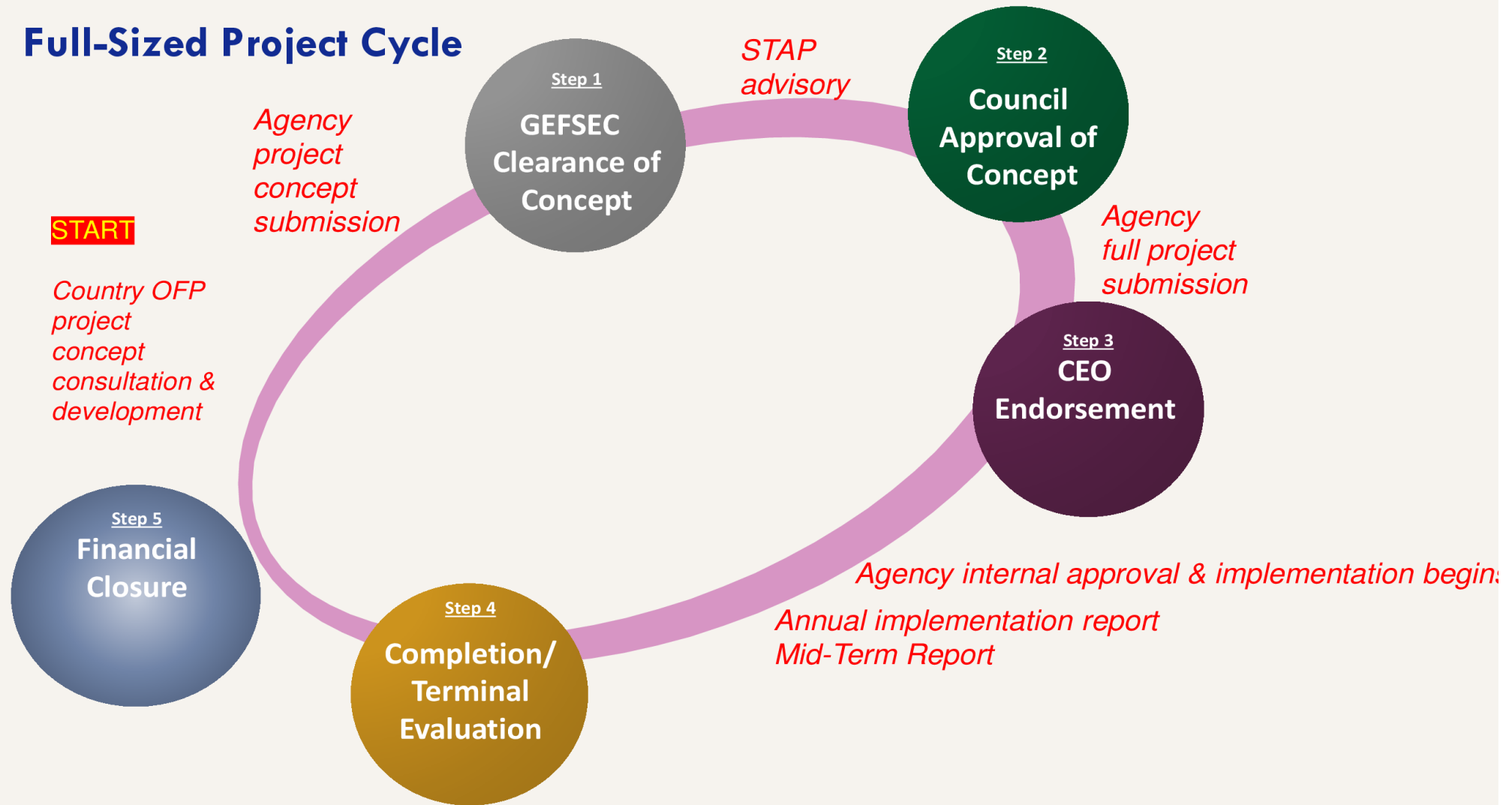
*Regional and global
projects and initiatives*

\$33 M

\$130M

The GEF Project cycle

Full-Sized Project Cycle



Factors Considered in Prioritizing Projects



Align with national plans,
such as NAPs, NAPAs,
NDCs and national
sustainable development
strategies



Align with LDCF/SCCF
Programming Strategy
for 2022-26



Opportunities to
leverage/catalyze
support with other funds



Level of resources
previously accessed

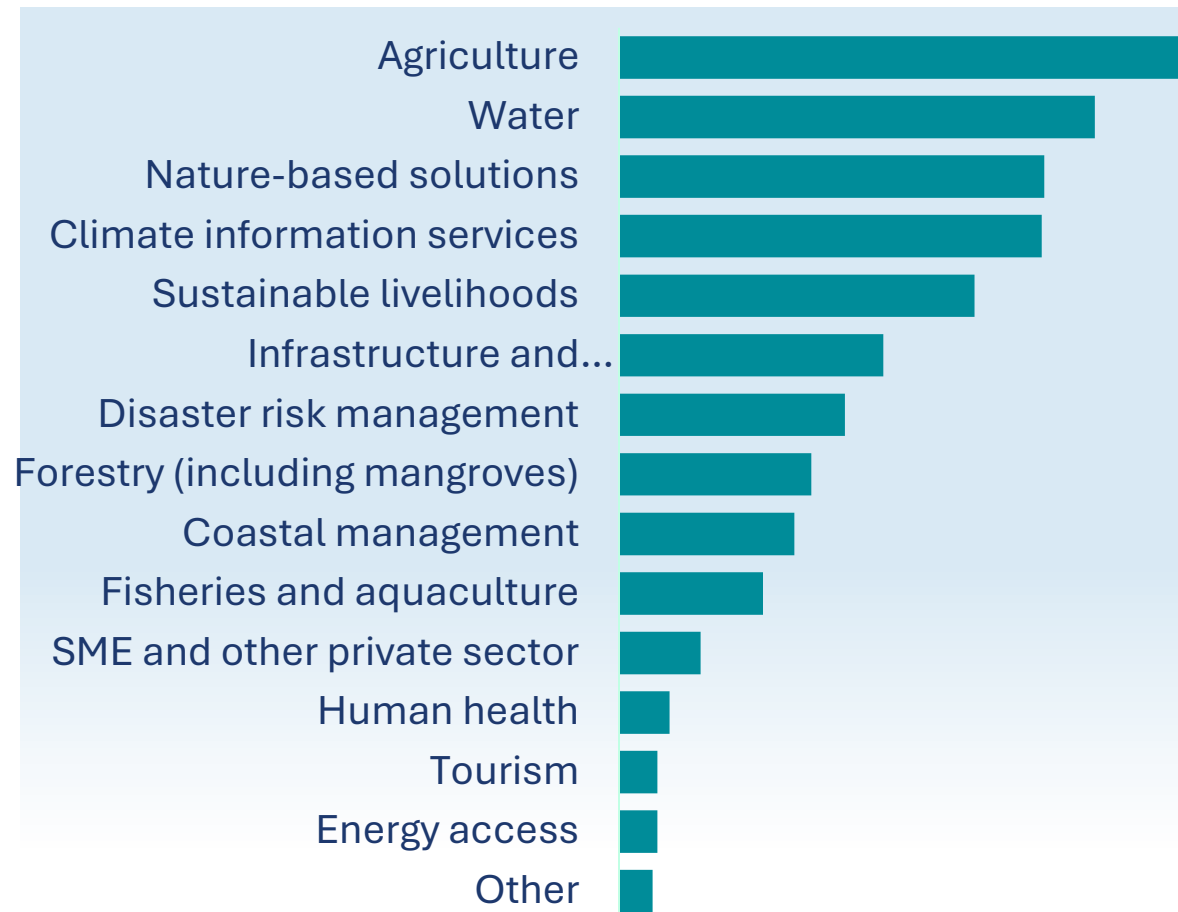


Additional factors:

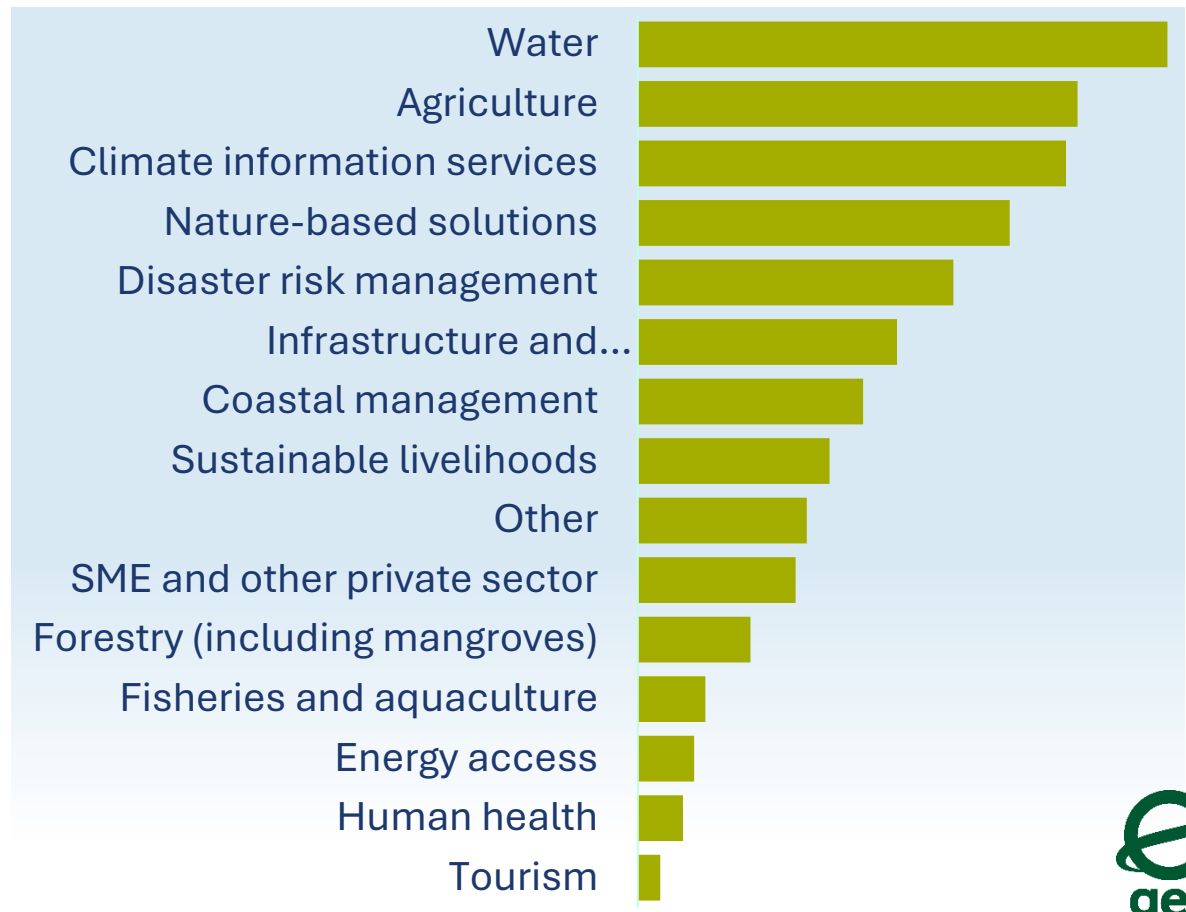
- Private sector engagement
- Geographical balance
- Extenuating circumstances, such as natural disasters
- Timing of technical approval of projects

Sector Distribution of Projects

LDCF



SCCF



Status of LDCF/SCCF Resource Programming, as Of June 30, 2025

Country	GEF-8 LDCF/SCCF Resources Available (\$ Million)
Benin	10.00
Congo DR	20.00
Eritrea	20.00
Guinea	9.00
Guinea-Bissau	20.00
Liberia	10.00
Madagascar	13.00
Malawi	5.00

Country	GEF-8 LDCF/SCCF Resources Available (\$ Million)
Maritius	3.00*
Mozambique	10.00
Niger	10.00
Senegal	20.00
Sudan	20.00
Togo	10.50
Uganda	4.00
Zambia	2.76

* SCCF Window A

Status of the GEF Trust Fund for Climate Change Programming, as of June 30, 2025

Country	Fund Available (\$ M)
Algeria	0.15
Botswana	1.00
Burkina Faso	1.50
Cabo Verde	1.65
Cameroon	0.76
CAR	0.80
Chad	0.75
Congo DR	4.03
Djibouti	1.80
Eq. Guinea	0.50
Eritrea	1.85
Ethiopia	0.09

Country	Fund Available (\$ M)
Guinea-Bissau	0.30
Kenya	0.06
Libya	1.00
Madagascar	0.74
Malawi	2.00
Mauritania	2.00
Morocco	0.10
Mozambique	0.03
Namibia	0.15
Sao Tome and Principe	0.50
Somalia	2.00

Country	Fund Available (\$ M)
South Africa	0.36
South Sudan	2.00
Sudan	2.00
Tanzania	0.81
Togo	1.95
Tunisia	0.57
Zambia	1.20

Capacity-building support

For LDCF and SIDS Planning and Programming

OBJECTIVES

■ *Support countries for high ambition and enhanced impact*

■ *Ensure all LDCs have opportunity to access*

■ *Advance programming of projects that articulate climate adaptation impact and enhance access*



Capacity-building support

For LDCF and SIDS Planning and Programming

Francophone LDCs and Haiti

HOSTED BY SENEGAL

Dakar, Senegal

*120+ participants
involving 17 LDCs*

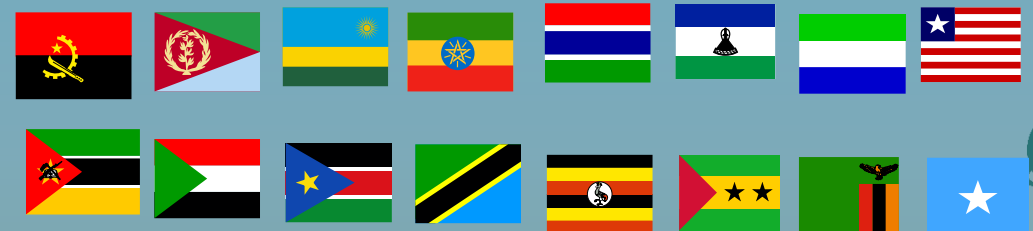


Anglophone and Lusophone African LDCs

HOSTED BY ETHIOPIA

Addis Ababa, Ethiopia

*120+ participants
involving 16 LDCs*



Capacity-building support

Country Engagement Strategy

Expanded Constituency Workshops (ECWs)

- ✓ Update OFPs and other stakeholders on GEF strategies and policies
- ✓ Facilitate sharing of best practices and lessons learned
- ✓ Foster regional and cross-sectoral collaboration
- ✓ Build capacity for integration of projects into national policy



National Dialogues

- ✓ Gather diverse stakeholders to discuss environmental issues
- ✓ Validate national policies and strategies
- ✓ Identify priority environmental projects for national funding
- ✓ Increase national ownership, coordination, and awareness.



GEF operational focal points (OFPs) Trainings

- ✓ Enhance the operational effectiveness of OFPs
- ✓ Strengthens OFPs' project oversight and monitoring capacity
- ✓ Fostering collaboration and knowledge sharing





global
environment
facility
INVESTING IN OUR PLANET



GREEN
CLIMATE
FUND

Complementary Programming between GEF and GCF

Long-term vision on complementarity

Elements

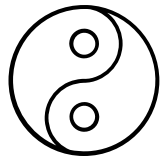


global
environment
facility
INVESTING IN OUR PLANET



GREEN
CLIMATE
FUND

Collaborative and coordinated programming



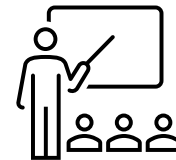
Major initiatives

National investment planning

List of priorities for each fund

Collaborating financing platforms

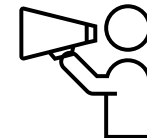
Sharing information, lessons learned and knowledge



Lessons learned from portfolio to
strengthen implementation

Development and use of
guidance products and
methodologies for design and
measurement

Communication and outreach



Communicate about LTV in
programming

Enhance outreach and
communications with donors,
at COPs



Long-term vision on complementarity

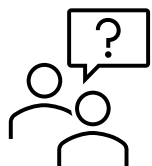
Ongoing Work



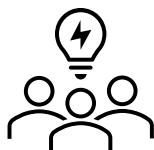
global
environment
facility
INVESTING IN OUR PLANET



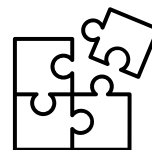
GREEN
CLIMATE
FUND



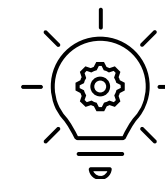
Consultations on
additional major
initiatives



Joint national
investment planning in 5
countries with Taskforce
for Climate Finance
Access



Analysis of GEF/GCF
processes and policies
and recommendations
to support
complementarity



Outreach and
knowledge sharing
expansion: COP 28
joint pavilion



GEF-9 Programming Strategy And Operational improvements (2026-2030)

**What's Next in the
GEF Climate
Finance?**

Thank you

