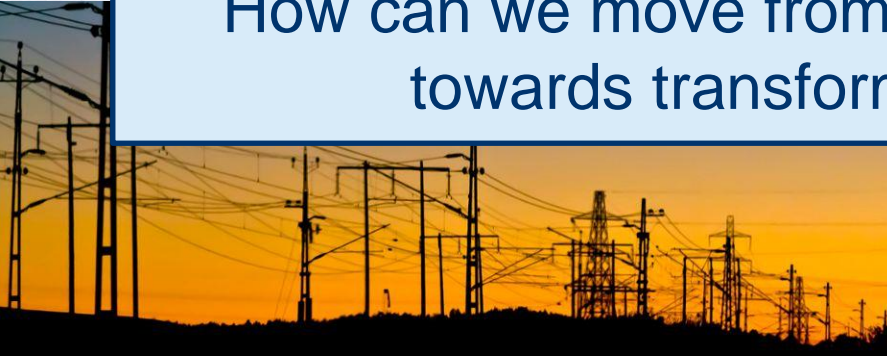


ÅSA SJÖSTRÖM

**VISIONS OF THE FUTURE – A
TOOL FOR WORKING
TOWARDS
TRANSFORMATION**



How can we move from incremental adaptation towards transforming our society?



What is meant by transformation?

Transformational adaptation: Adaptation that changes the fundamental attributes of a system in response to climate and its effects. (IPCC AR6, WGII)

- Requires change at several levels:
 - ✓ Individual's choices, values and driving forces
 - ✓ Technology, legislation, infrastructure, delivery chains
 - ✓ Culture, norms and governance
- Transformation deals with complex issues, and requires complex participation; knowledge, solutions and mandates from different stakeholders

Towards transformation– create your future

Target groups:

- Those responsible for adaptation strategies/action plans in an organisation
- Students, politicians and general public

Purpose:

- Improve knowledge and engagement for adaptation
- Anchor adaptation in broad and cross-sectorial groups
- Create a common vision of our aim – what will our society look like after 50 years of adaptation work?
- Gives a good basis for strategies and action plans, if combined with backcasting

Working with visualisation

Step 1: Climate change background, setting out the adaptation challenges

Step 2: Visualisation of society in 2073

Step 3: Create the future - pictures of a climate resilient society / municipality / organisation

Step 4: Backcasting

- What changes took place to get us our here?
- What have we won, and what have we lost?
- In what way has society transformed?

Working with visualisation - example

Introduction

Imagine that you are walking/biking/in your car in the vicinity of a middle sized city you are familiar with. Further ahead there is a tunnel that you enter. The tunnel is a sort of a time machine. You see the light at the end of the tunnel and when you exit on the other side you discover that a lot has changed. You enter the city and see some houses you recognize but the cityscape is quite different.

.....
.....
.....

Working with challenges and images

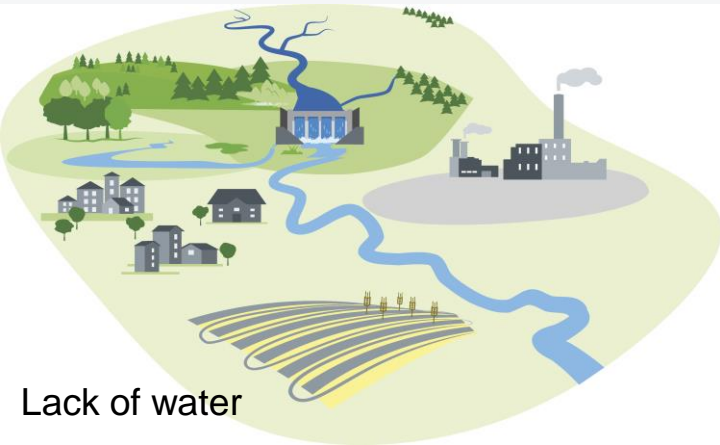
SMHI



Heat waves



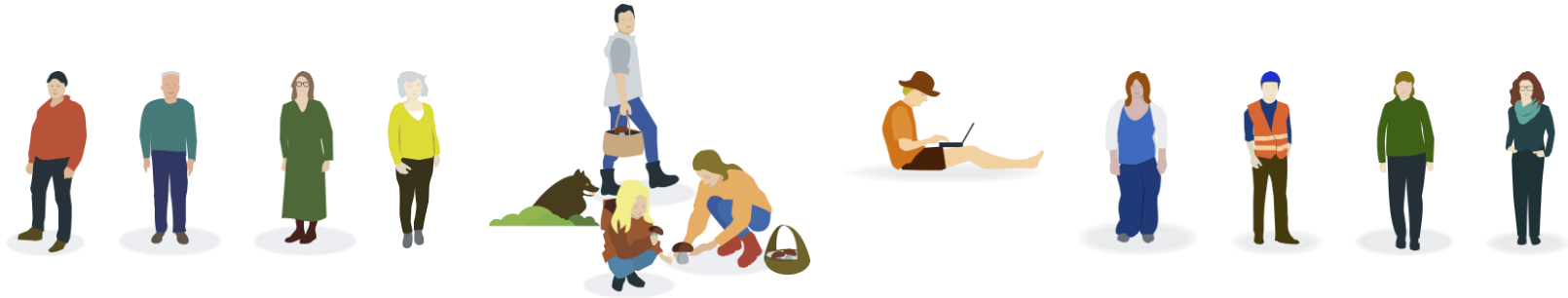
Pests, diseases and invasive alien species



Lack of water



Flooding



Group discussions



Presentation





These workshops have been tried out in several municipalities, regions and at conferences.

The next step is to complete the workshop material and make the concept generally available at www.klimatanpassning.se .



Thank you!

asa.sjostrom@smhi.se
www.klimatanpassning.se