



REPUBLIC OF SLOVENIA
MINISTRY OF THE ENVIRONMENT AND SPATIAL PLANNING

MULTILATERAL ASSESSMENT SLOVENIA

UNFCCC, SBI 52-55
(Glasgow, November 2021)

Martin Batic, PhD

Head of Climate Change and Biotechnology
Ministry of the Environment and Spatial Planning
Republic of Slovenia



BASIC DATA



REPUBLIC OF SLOVENIA
MINISTRY OF THE ENVIRONMENT AND SPATIAL PLANNING

AREA

20.271 km²

POPULATION

2,107,007

GDP p.c.

25.180USD (2020)

21.778 EUR

GHG Emissions (2017)

17,45 Mt CO₂ eq.

8,28 ton CO₂ eq. p.c.
(excl. LULUCF)

Slovenia



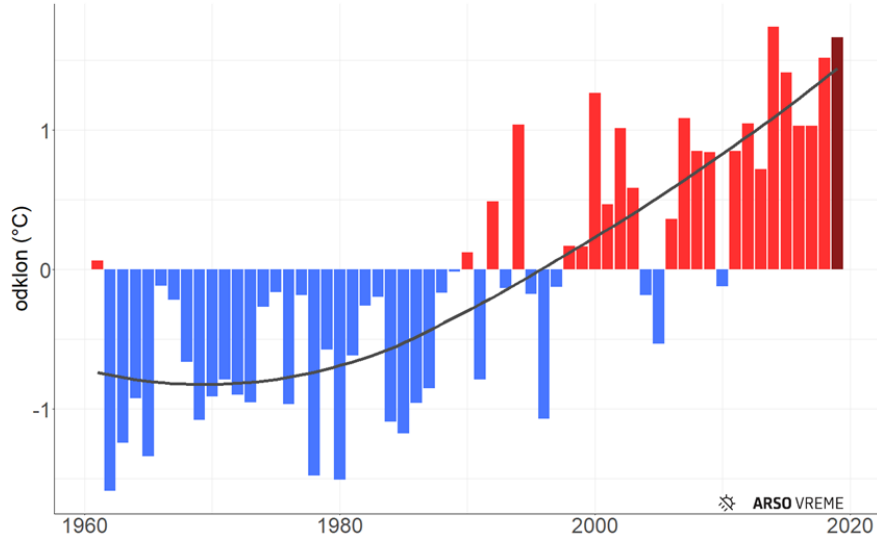
CLIMATE TRENDS AND SCENARIOS



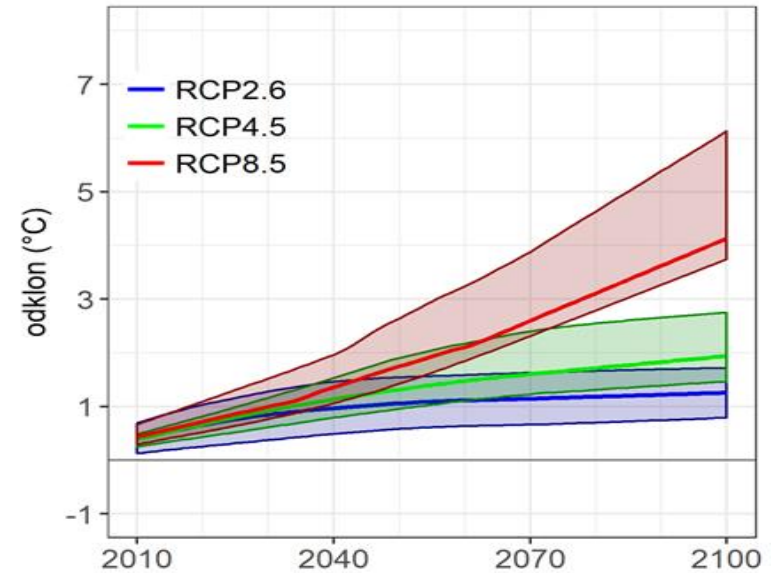
REPUBLIC OF SLOVENIA
MINISTRY OF THE ENVIRONMENT AND SPATIAL PLANNING

Slovenia observed ~2 °C average warming between 1961 - 2019

Povprečna temperatura zraka (referenca 1981–2010)
Leto 1961–2019

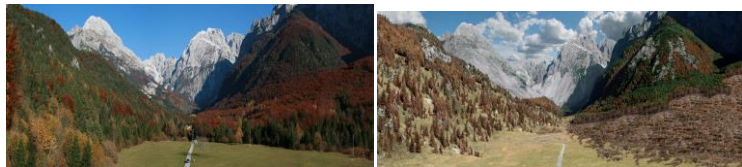


Deviation of the annual average air temperature for Slovenia from the long-term average 1981-2010. The blue columns show the years with a negative and the red ones with a positive average deviation from the thirty-year average 1981-2010. The black curve shows a smoothed average deviation (source: ARSO).



Time course of changes in mean average air temperature in Slovenia until the end of the 21st century, including ranges of deviations. Shown is the deviation from the average 1981-2010 (source: ARSO).

INCREASE OCCURENCE OF MORE EXTREME WEATHER EVENTS

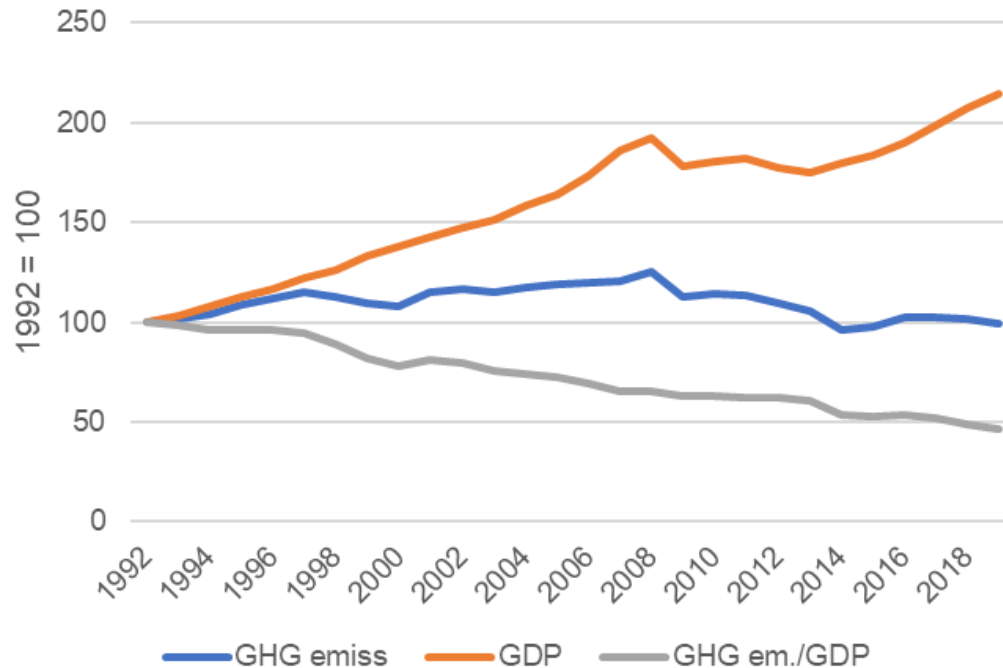


GHG EMISSION TRENDS



REPUBLIC OF SLOVENIA
MINISTRY OF THE ENVIRONMENT AND SPATIAL PLANNING

DECOUPLING OF ECONOMIC GROWTH AND EMISSIONS EVIDENT



□ 1992-2015 GDP grew by 114% while emission fell by 1%

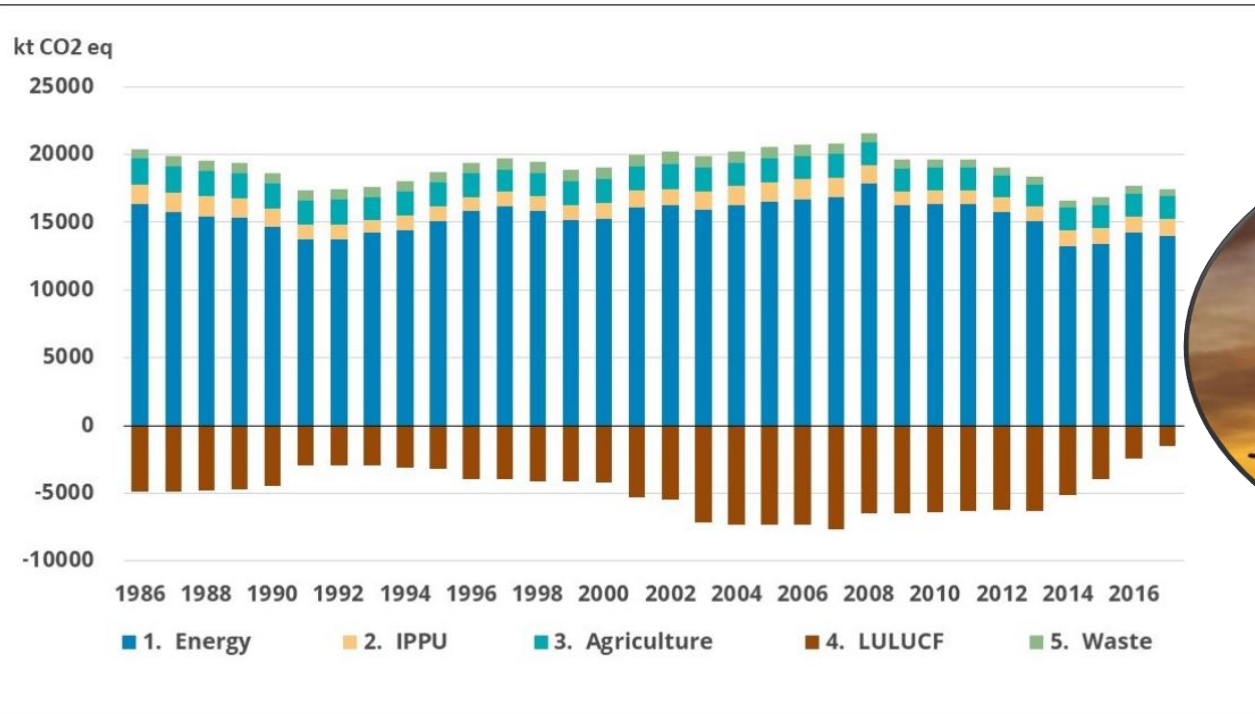


GHG EMISSIONS IN SLOVENIA



REPUBLIC OF SLOVENIA
MINISTRY OF THE ENVIRONMENT AND SPATIAL PLANNING

ENERGY



- ❑ 80.2 % of total GHG in 2017;
- ❑ - 14.5 % emission compared to 1986;
- ❑ - 28.1 % in period 1986-2017 Energy Industry;
- ❑ 174 % increase in period 1986-2017 Transport;

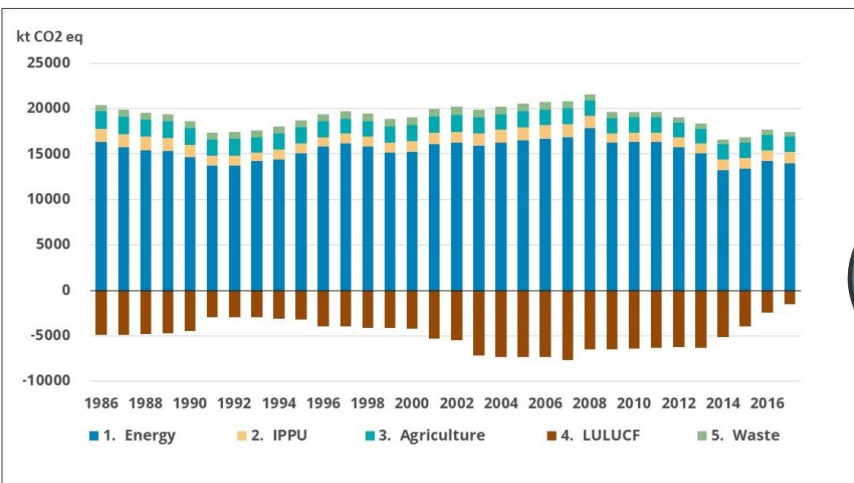


GHG EMISSIONS IN SLOVENIA



REPUBLIC OF SLOVENIA
MINISTRY OF THE ENVIRONMENT AND SPATIAL PLANNING

ENERGY - TRANSPORT



NATIONAL CIRCUMSTANCES (1)

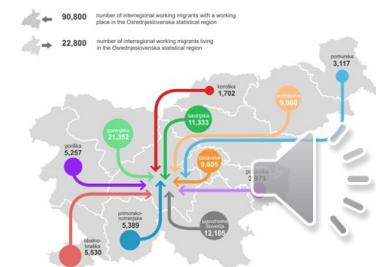
TRANSPORT

Factors reducing mitigation potential in transport sector:

- Transit
- Settlement



Labour migrations, statistical regions, 2018



Source: GURS, SURS

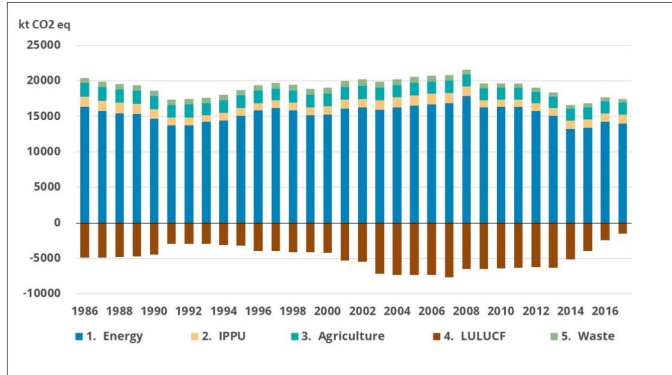
© SURS

GHG EMISSIONS IN SLOVENIA



REPUBLIC OF SLOVENIA
MINISTRY OF THE ENVIRONMENT AND SPATIAL PLANNING

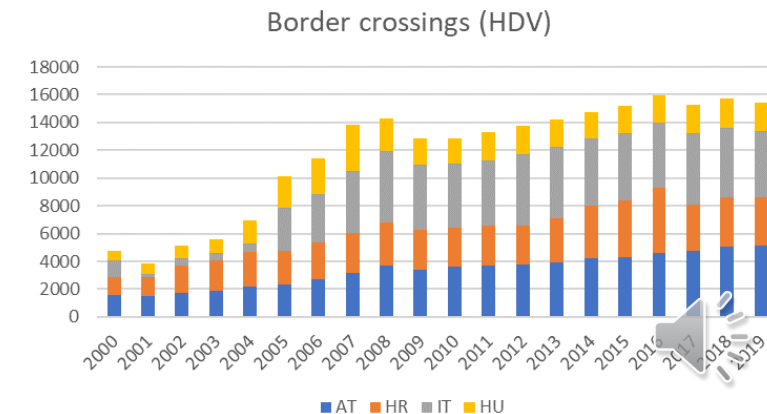
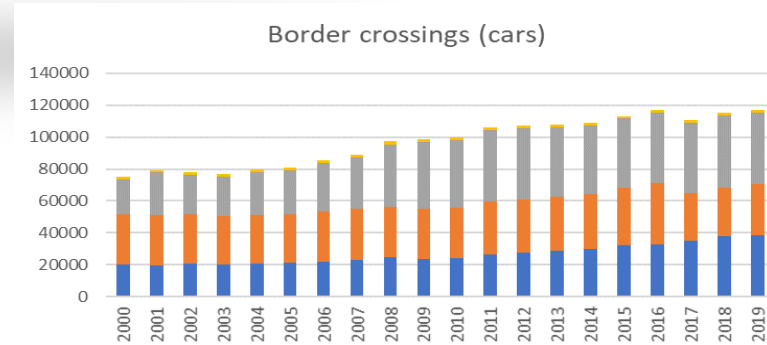
ENERGY - TRANSPORT



TRANSPORT

NATIONAL CIRCUMSTANCES (2)

Transit

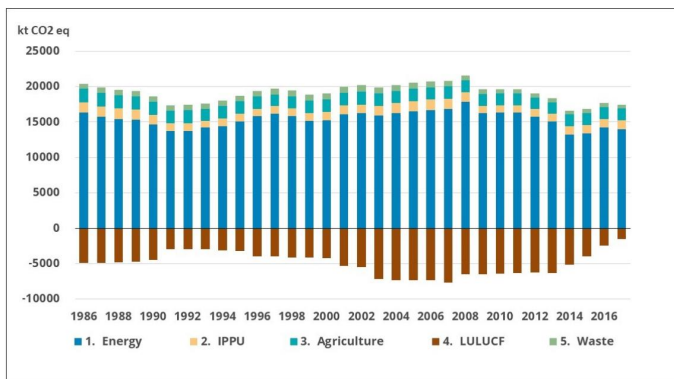


GHG EMISSIONS IN SLOVENIA



REPUBLIC OF SLOVENIA
MINISTRY OF THE ENVIRONMENT AND SPATIAL PLANNING

ENERGY - TRANSPORT



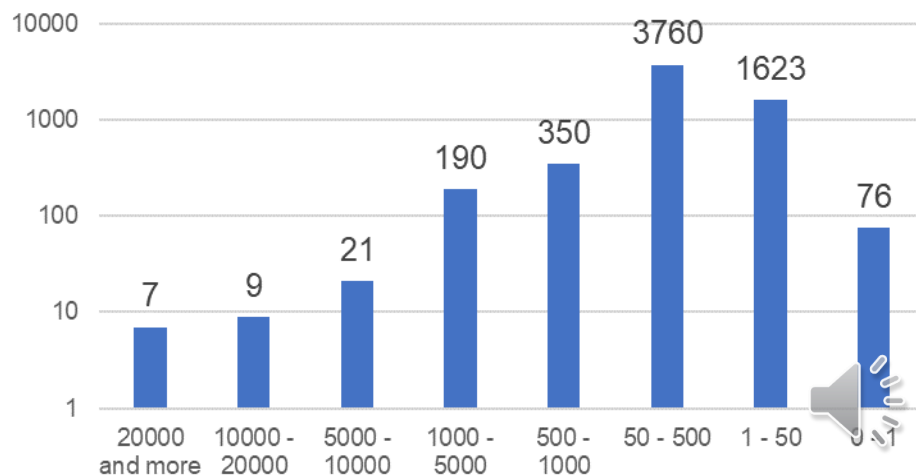
NATIONAL CIRCUMSTANCES (3)

Labour migrations, statistical regions, 2018

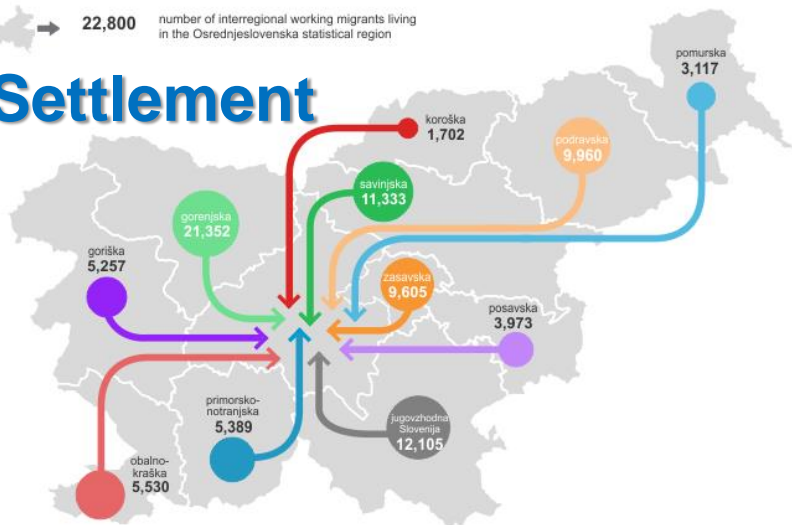
- 90,800 number of interregional working migrants with a working place in the Osrednjeslovenska statistical region
- 22,800 number of interregional working migrants living in the Osrednjeslovenska statistical region

TRANSPORT

Settlements by # of inhabitants



Settlement

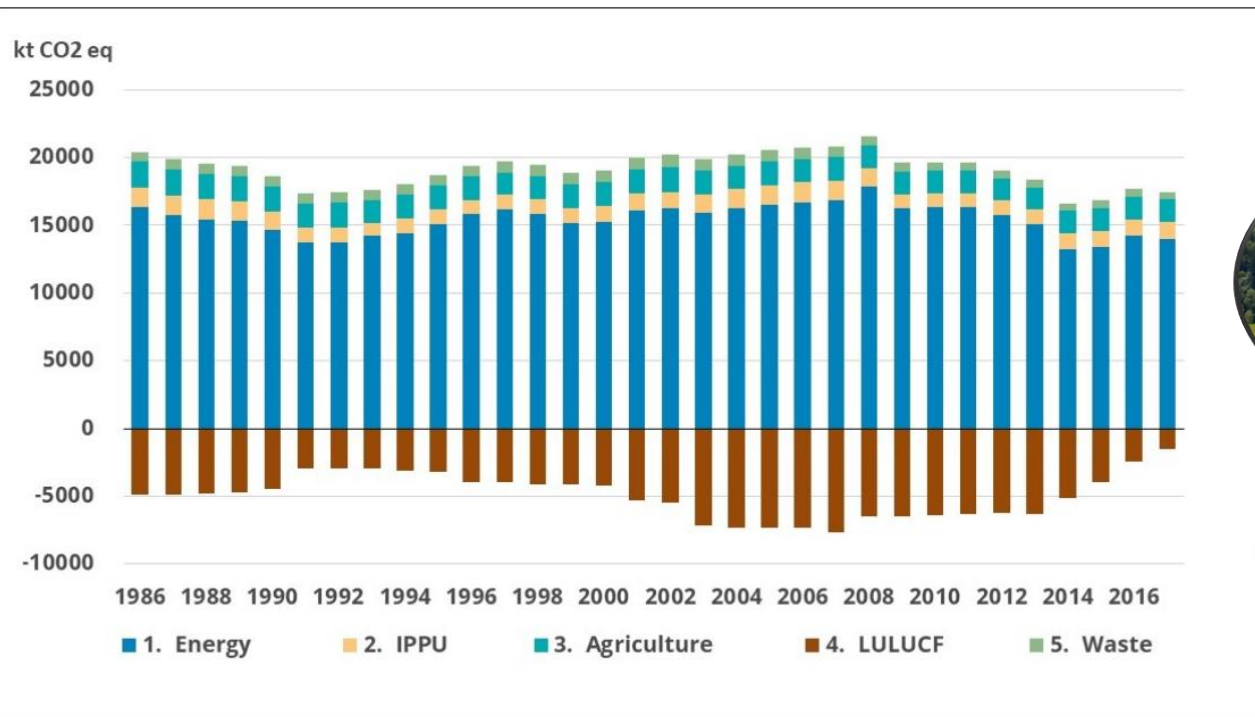


GHG EMISSIONS IN SLOVENIA BY SECTOR



REPUBLIC OF SLOVENIA
MINISTRY OF THE ENVIRONMENT AND SPATIAL PLANNING

AGRICULTURE and LULUCF



- 9.7 % of all emission;
- Main source of methane and N₂O emission;
- ~ 1,524 kt CO₂ eq sink in LULUCF sector



2020 GHG COMMITMENTS



REPUBLIC OF SLOVENIA
MINISTRY OF THE ENVIRONMENT AND SPATIAL PLANNING

2020 GHG target: -20% compared to 1990

(EU - 31% from 1990 and reached their lowest level in 30 years)

-14% compared to 2005

EU ETS

-21% compared to 2005

ESD Sectors

-10% compared to 2005

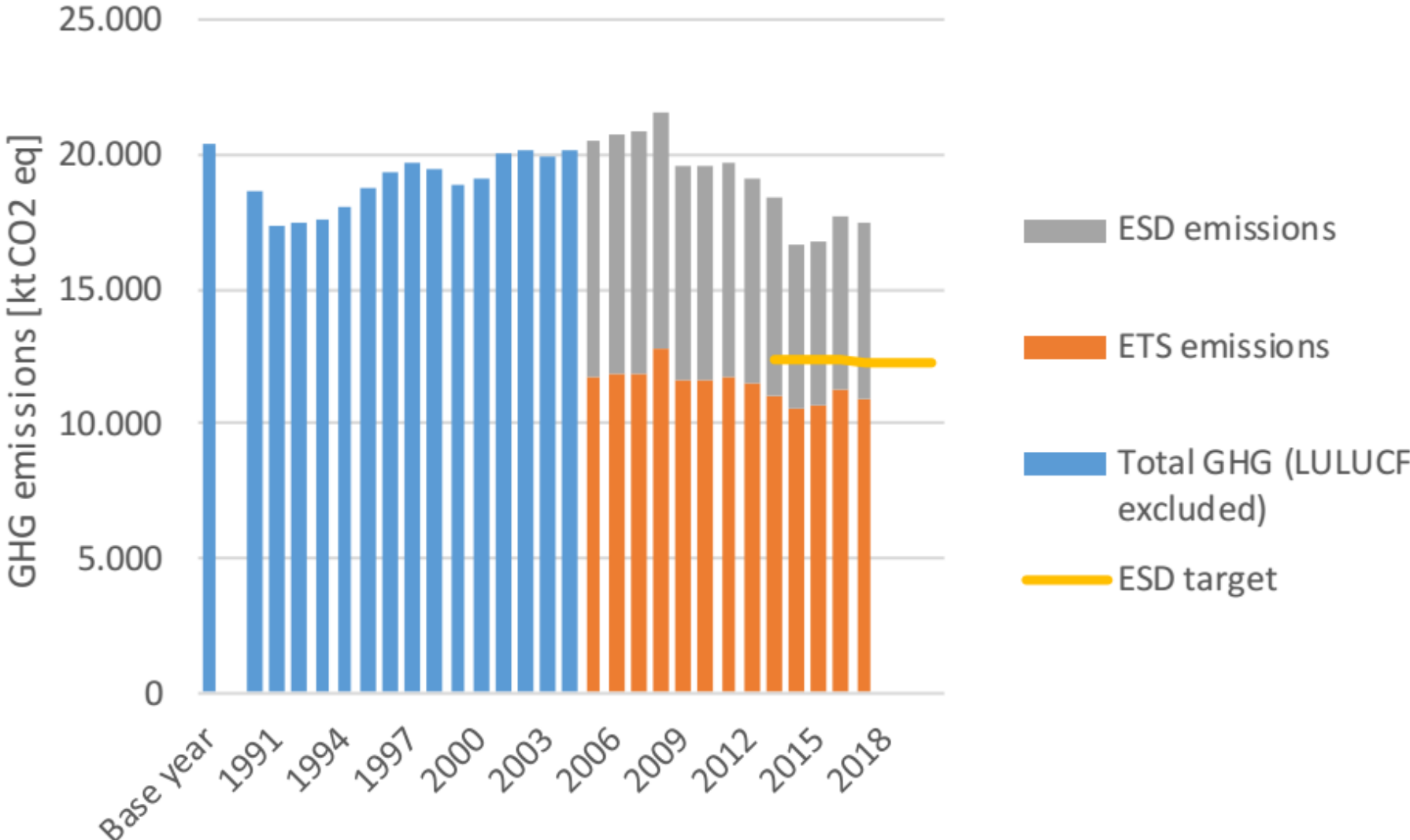
28 Member State targets, ranging from -20% to +20%



GHG targets under the 2020 Climate and Energy Package
(source: European Commission)



2020 GHG COMMITMENTS



REACHING 2020 GHG EMISSION TARGETS



REPUBLIC OF SLOVENIA
MINISTRY OF THE ENVIRONMENT AND SPATIAL PLANNING

Operation Programme for Reducing GHG Emissions (OP-GHG) until 2020 with a view to 2030 adopted in December 2014 (covering sectors outside of ETS)

- ❑ **Annual Climate Mirror** - is an annual publication prepared within a system for monitoring the implementation of measures for reducing GHG emissions.

Focus on Green Growth

Aim to „OVERSHOOT“ 2020 Target

- ❑ **Integrated National Energy and Climate Plan 2021-2030 – adopted in February 2020**
- ❑ **Resolution on Slovenia’s Long-term Climate Strategy until 2050 (ReDPS50) – adopted in July 2021 – climate neutrality until 2050**



REACHING 2020 GHG EMISSION TARGETS



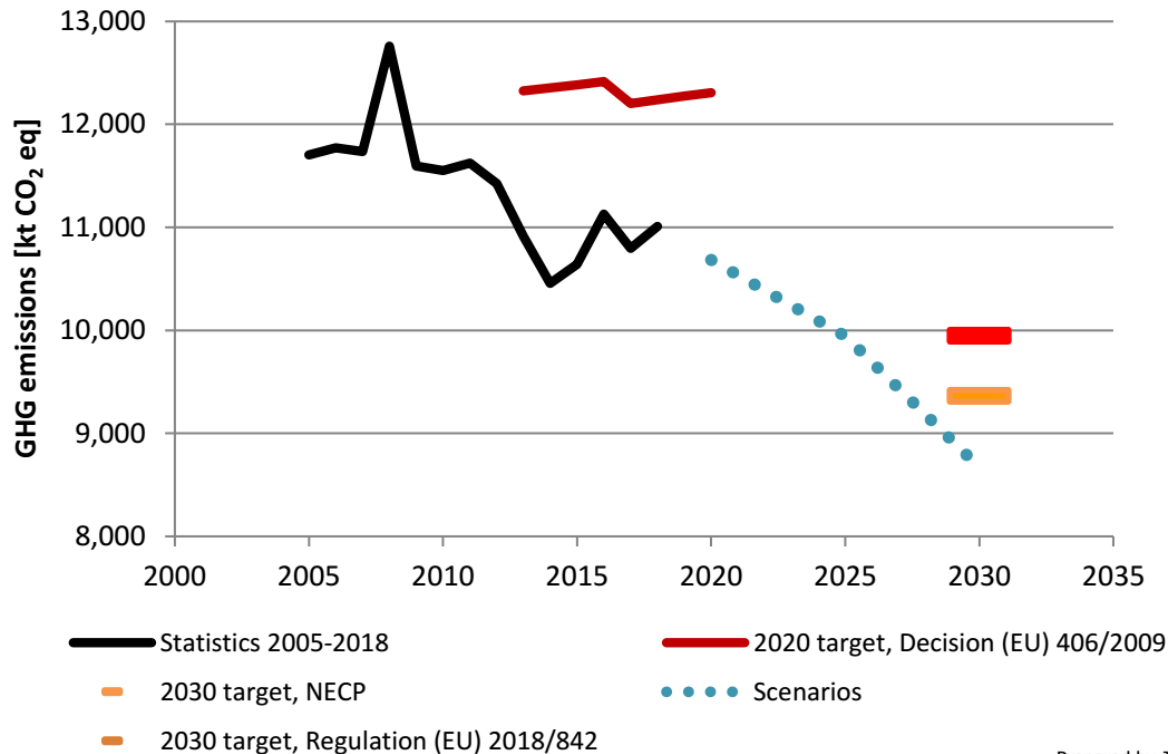
REPUBLIC OF SLOVENIA
MINI

2020 TARGET

GHG emissions from the non-ETS sector **will not increase by more than 4% compared to 2005.**

2030 TARGET¹

GHG emissions from the non-ETS sector **will be reduced by at least 20% compared to 2005.**



Prepared by JSI-EEC

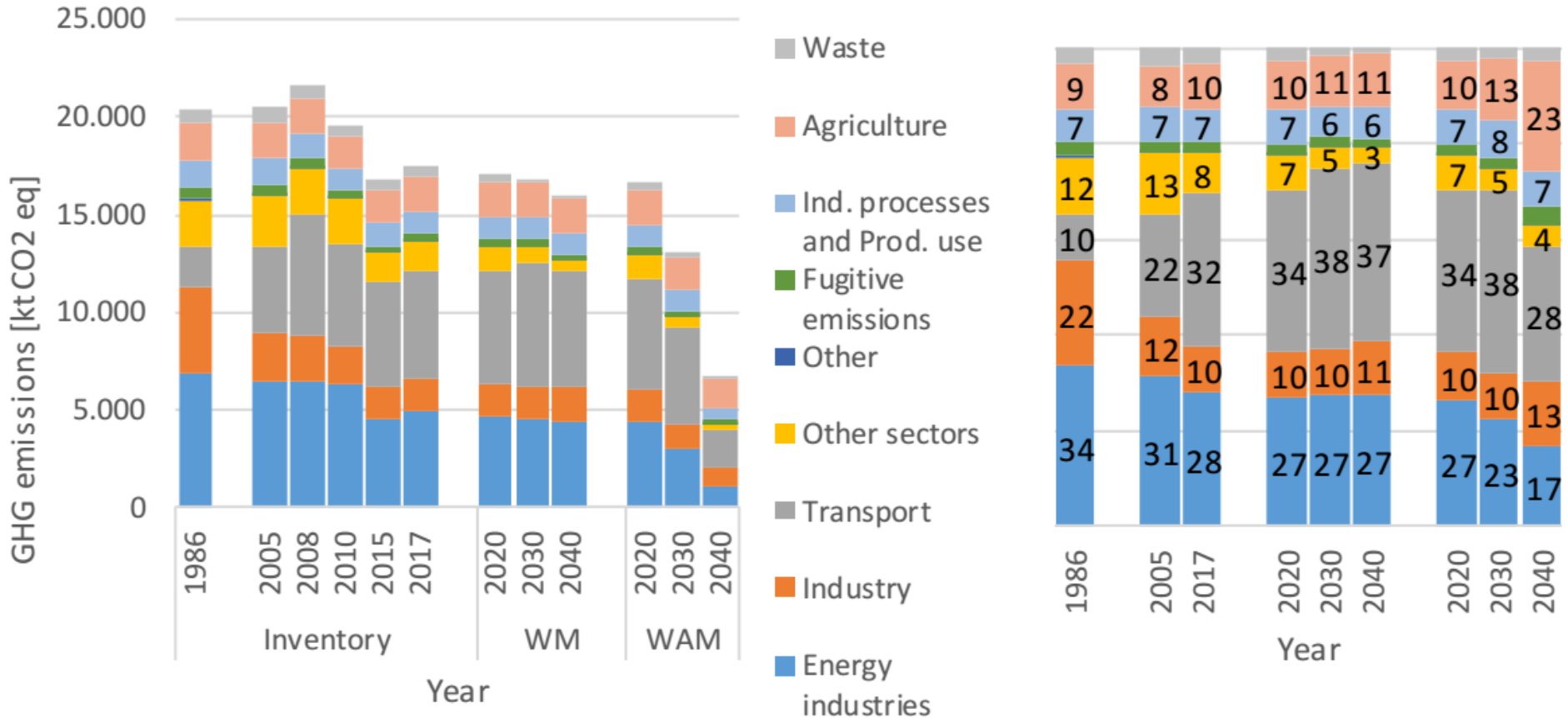
GHG emissions from the non-ETS sector in the 2005–2018 period compared to the target emissions in 2020 and 2030 (source: JSI-EEC).



GHG EMISSION TRENDS (PROJECTIONS)

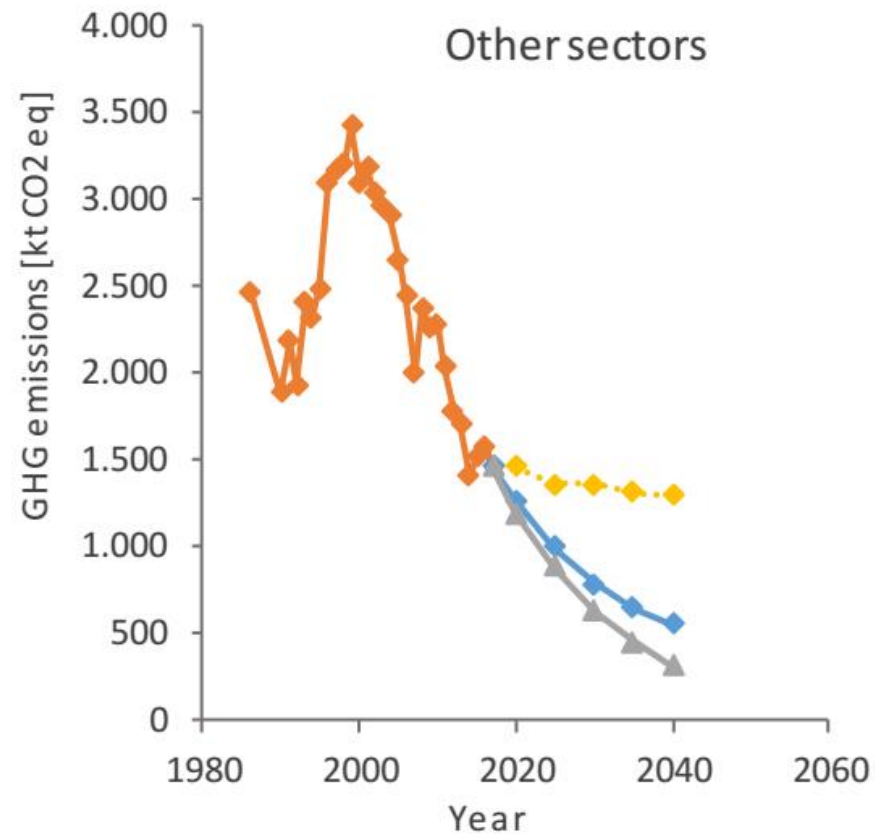
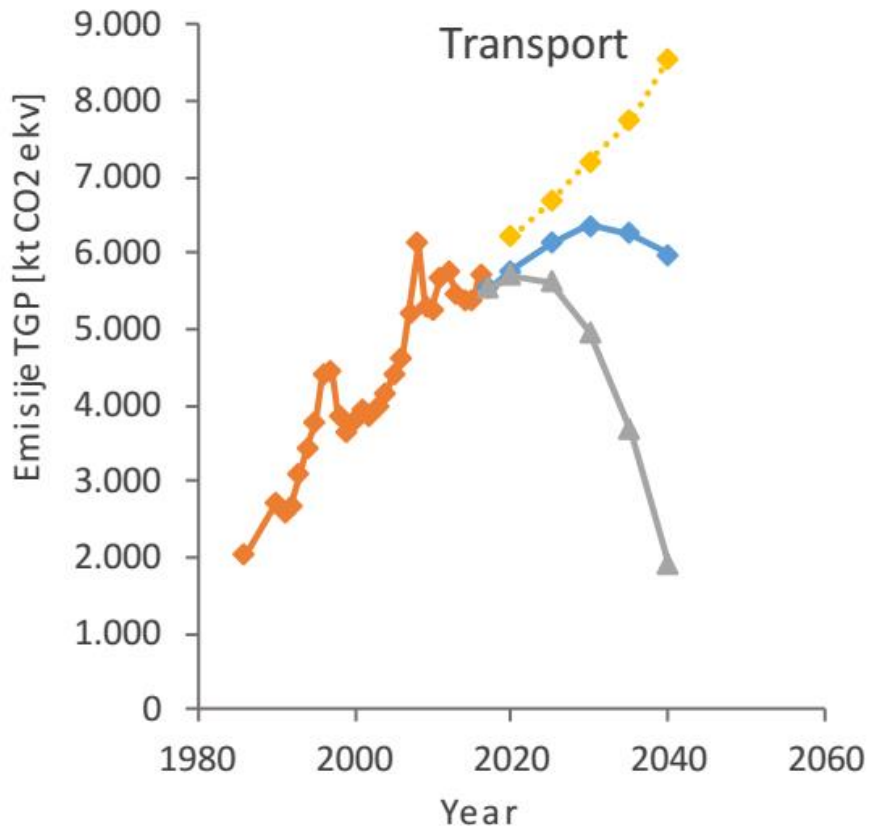


REPUBLIC OF SLOVENIA
MINISTRY OF THE ENVIRONMENT AND SPATIAL PLANNING



Sectoral GHG emission structures in selected years and by projections with measures and with additional measures for 2020, 2030 and 2040 - left: total emissions; right: structure of emissions in percentages (source: EARS, IJS-CEU, KIS)

GHG EMISSION TRENDS (PROJECTIONS)



- ◆ Actual emissions
 ◆ With measures
 ◆ Actual emissions
 ◆ With measures
- ▲ With add. measures
 ◆ Without measures
 ▲ With add. measures
 ◆ Without measures

GHG emissions from transport (left) and from the other sectors (right) in the 1986–2017 period and according to the projections with measures, with additional measures and without measures by 2040 (source: EARS and IJS-CEU)





REPUBLIC OF SLOVENIA
MINISTRY OF THE ENVIRONMENT AND SPATIAL PLANNING



THANK YOU !!



I FEEL
SLOVENIA

