



# **Technical workshop on the institutional arrangements of the Santiago Network of the Warsaw International Mechanism for Loss and Damage**

## **Climate Technology Center and Network Structure and Complementariness with SN on Loss and Damage**



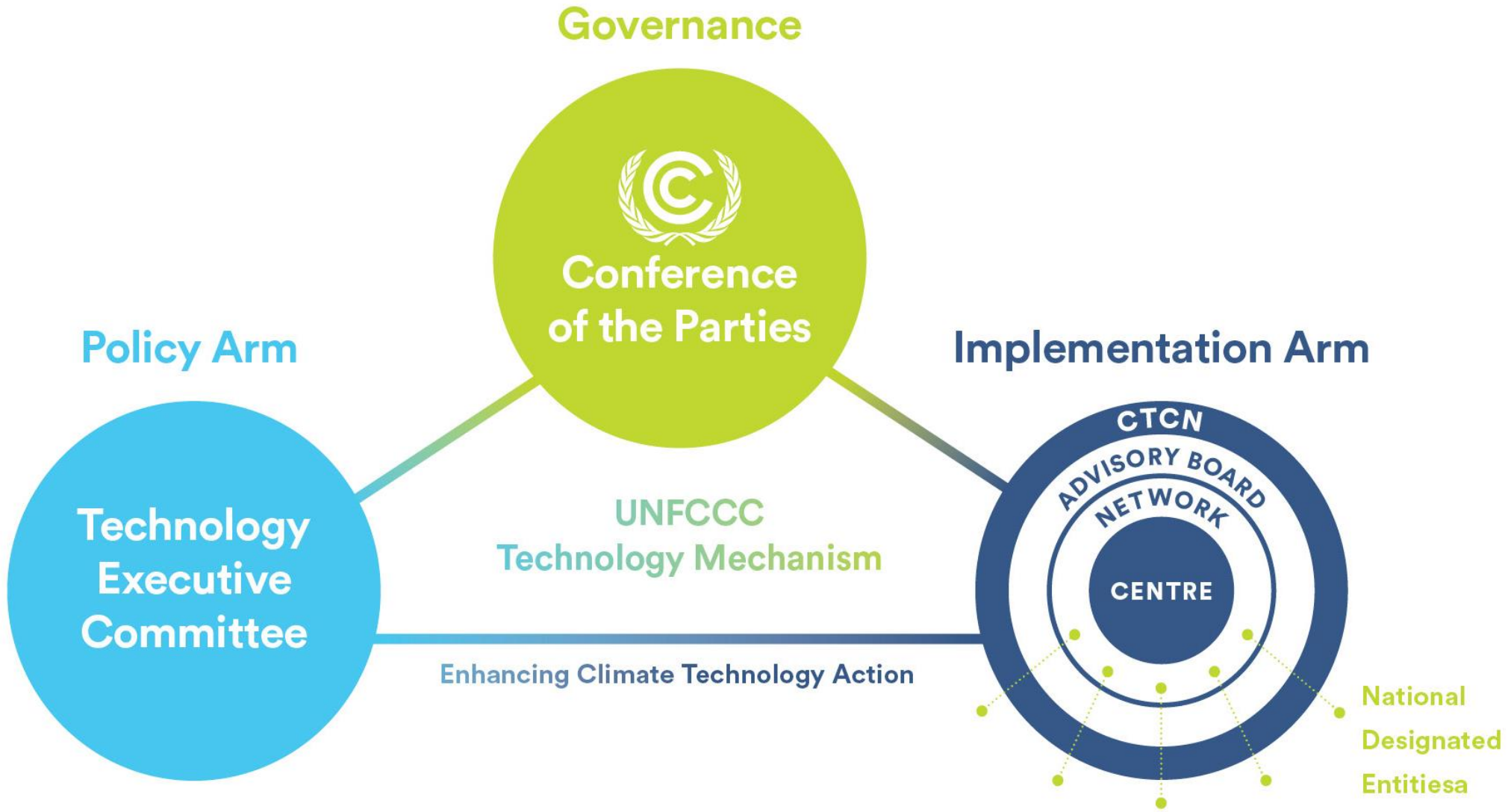
## Organisation

- Operational arm of the UNFCCC Technology Mechanism
- Consortium of organizations from all regions + Network

## Mission and scope

- Mission to stimulate technology cooperation and enhance the development and deployment of technologies in developing countries
- Technologies include any equipment, technique, knowledge and skill needed for reducing greenhouse gas emissions and for adapting to climate change effects

# CTCN Structure



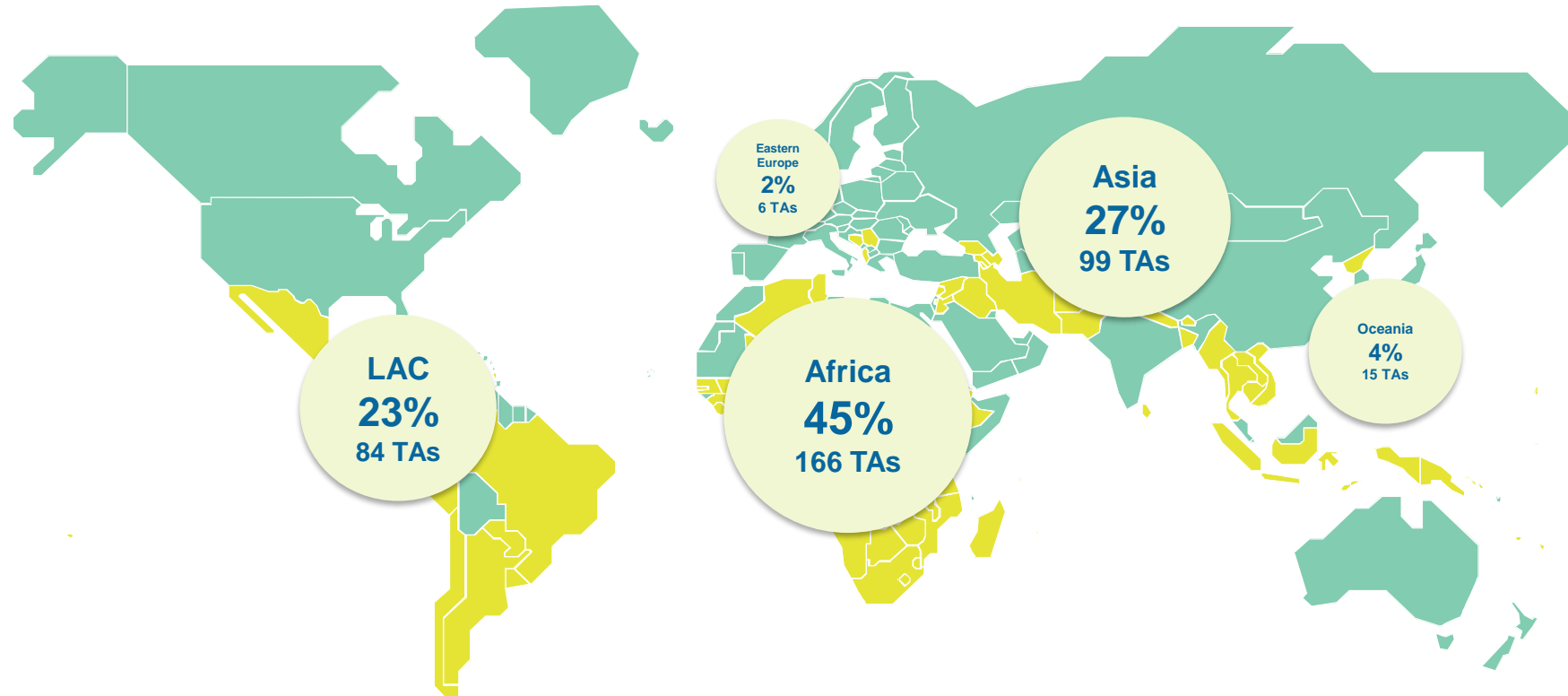


Agriculture  
Carbon Fixation & Abatement  
Energy Efficiency  
Forestry  
Industry  
Renewable Energy  
Transport  
Waste Management

Agriculture & Forestry  
Coastal Zones  
Early Warning & Environmental Assessment  
Human Health  
Infrastructure & Urban Planning  
Marine & Fisheries  
Water

# Technical Assistance Projects / 2014 - 2021

332 TA requests received from 108 countries



Around **20% of the technical assistance delivered by the CTCN is on Disaster Risk reduction approach**, additionally **20% of the technical assistance used community-based approach** to identify technologies and best practices

# The Network , THE Role of NDEs



- NDEs are the main spokes in the network wheel.
- Support in prioritization of the request, monitor implementation and ensure coordination within Ministries
- Different NDEs have set up different systems to invite request for prioritization
- Mostly in the Ministry of Environment with coordination with other focal points.
- NDEs in over 165 countries , both Annex 1 and Non Annex 1 , but different roles

# Role of Network (Institutions)



As per para 123 CP 16 , the Climate Technology Centre shall facilitate a network of **national, regional, sectoral and international technology networks**, organizations and initiatives with a view to engaging the participants of the Network effectively in the following functions:

- Support related to the **identification and prioritization of technology needs** and the implementation of environmentally sound technologies, practices and processes.
- **Capacity building** through provision of information, training and support for programmes.
- **Facilitating a network** of and enhancing cooperation with national, regional, sectoral and international technology centers, networks, organization and initiatives.
- In-country **technical assistance and training** to support identified technology actions.
- Establishment of twinning center arrangements to **promote North–South, South–South and triangular partnerships**.
- Identifying, disseminating and assisting with **developing analytical tools, policies and best practices** for country-driven planning etc.

# Comparison and Complementarity with the needs of the Santiago Network on Loss and Damage



CTCN has a large experience in delivering the mandates of the COP and the Parties, specifically in the areas of

**Averting *loss and damage*.** (Climate smart sustainable development, risk assessment, improved agriculture practices and varieties, resilient infrastructure standards, city design etc.)

and

**Minimizing *loss and damage*.** (disaster risk assessment, disaster prevention, soil and water conservation, flood defenses, disaster preparedness planning etc.).



# CTCN Experience (Avert): Climate Change Vulnerability and Adaptation Study for the Port of Port Louis



Objective : Undertake climate risk assessment for the Port of Port Louis, both land based and sea-based, that will identify current vulnerabilities and future risks, evaluate the risks, identify and prioritize adaptation options using a multi-criteria analysis and set a monitoring baseline.

## Expected Benefits :

- Enhancing the resilience of port infrastructure to support future economic development
- Ensuring that climate changes are incorporated in future design specifications such as sea level rise and storm surges
- Mitigating the impact of climate change through proper climate resilient spatial planning of the port
- Enabling more targeted investment in technology and equipment such as gantry loaders, shore cranes, etc. that will adapt to future climate changes
- Identifying areas where upgrading of infrastructure including port facilities, storage areas and navigation systems are required.

# CTCN Experience : Resilience to climate variability in the building sector of Antigua and Barbuda

- The country has experienced >10 hurricanes in 20 years. Each brought loss of lives, damages on buildings and ecosystems, and lack of access to electricity.
- CTCN conducted technical assessments of key government buildings, including hospitals, police offices, fire stations and schools, and identified the interventions to make them resilient to climate change and variability, and their costing.
- This support led to the development of a funding proposal to GCF for scaling up the building resilience project.

Proponent	Ministry of Agriculture, Housing, Lands and the Environment	TA implementor	Engineering Construction and Management Consulting (St. Lucia)
NDE	Ministry of Agriculture, Housing, Lands and the Environment	Budget	96,000 USD



# Complementarities



Provision of technical support and guidance on approaches to address loss and damage

Decision 1/CP16 para 123 (a) (i): Providing advice and support related to the identification of technology needs and the implementation of environmentally sound technologies, practices and processes;

Facilitating the mobilization and securing of expertise, and enhancement of support ... to strengthen existing approaches and, where necessary, facilitate the development and implementation of additional approaches to address loss and damage

COP 24 decision on linkages between Technology & Financial Mechanisms (§6, §7):

- Countries are invited to seek CTCN support to develop and submit technology-related projects to the Financial Mechanism
- Encourages the CTCN to engage with the GCF/GEF to identify ways to enhance information-sharing among country focal points (NDEs, NDAs, and GEF focal points)

Provide reliable support for the most vulnerable countries and communities to address loss and damage on the ground

CTCN eligibility and Prioritization criterion as established by the Advisory Board of the CTCN – Specific focus on LDCs and SIDs.

Facilitate input and information for decision-making at all levels (community / subnational / national / regional / global), especially for WIM

Decision 1/CP16 para 123 (c) : Facilitating a network of national, regional, sectoral and international technology centers, networks, organization and initiatives with a view ..... (i) to ( v)

Facilitate capacity development on L and D of stakeholders at all levels

Decision 1/CP16 para 123 (a) (ii):  
Facilitating the provision of information, training and support for programmes to build or strengthen capacity of developing countries to identify technology options, make technology choices and operate, maintain and adapt technology

The SN should address the technical needs of developing countries to avert, minimize, and address loss and damage

Decision 1/CP16 para 123 (a) (i) :  
At the request of a developing country Party - Providing advice and support related to the identification of technology needs and the implementation of environmentally sound technologies, practices and processes

**This includes technology and issue related to loss and damage. This also is correlated to technical needs as per the definition**

As the SN was established as part of the WIM, and the Executive Committee of the WIM was established to guide the implementation of the functions of the WIM

CTCN was established through a COP decision. The CTCN reports to COP on an annual basis jointly with the TEC. The Advisory Board of the CTCN approved its annual work plan and budget.

Accessing finance for L&D and supporting the development of new project proposals focused on loss and damage

CTCN engagement with the GCF is anchored in UNFCCC/COP and GCF Board decisions mandating both institutions to work together.

- COP 24 decision on linkages between Technology & Financial Mechanisms (§6, §7):
  - Countries are invited to seek CTCN support to develop and submit technology-related projects to the Financial Mechanism
  - Encourages the CTCN to engage with the GCF/GEF to identify ways to enhance information-sharing among country focal points (NDEs, NDAs, and GEF focal points)
- GCF B.17: GCF adopted Operational Framework on Complementarity and Coherence:
- GCF B.18: proposed a delivery partner work programme for the CTCN under the Readiness and Preparatory Support Programme

The development of policy and planning strategies and documents

CTCN extensive experience over 8 years

<https://www.ctc-n.org/technical-assistance/data>

Decision 1/CP16 para 123 (c) (v) : Identifying, disseminating and assisting with developing analytical tools, policies and best practices for country-driven planning to support the dissemination of environmentally sound technologies;

## WIM/ SN

## CTCN

<p>Assessing loss and damage, identifying options and designing and implementing country-driven risk management strategies and approaches</p>	<p>Decision 1/CP16 para 123 (c) (v) and (d): Identifying, disseminating and assisting with developing analytical tools, policies and best practices for country-driven planning to support the dissemination of environmentally sound technologies.</p> <p>(d) performing other such activities as may be necessary to carry out its functions.</p>
<p>Concrete implementation projects to address L&amp;D on the ground</p>	<p>Through its Technical Assistance interventions, the CTCN has created enabling conditions to implemented projects to address Loss and Damage on the ground</p>

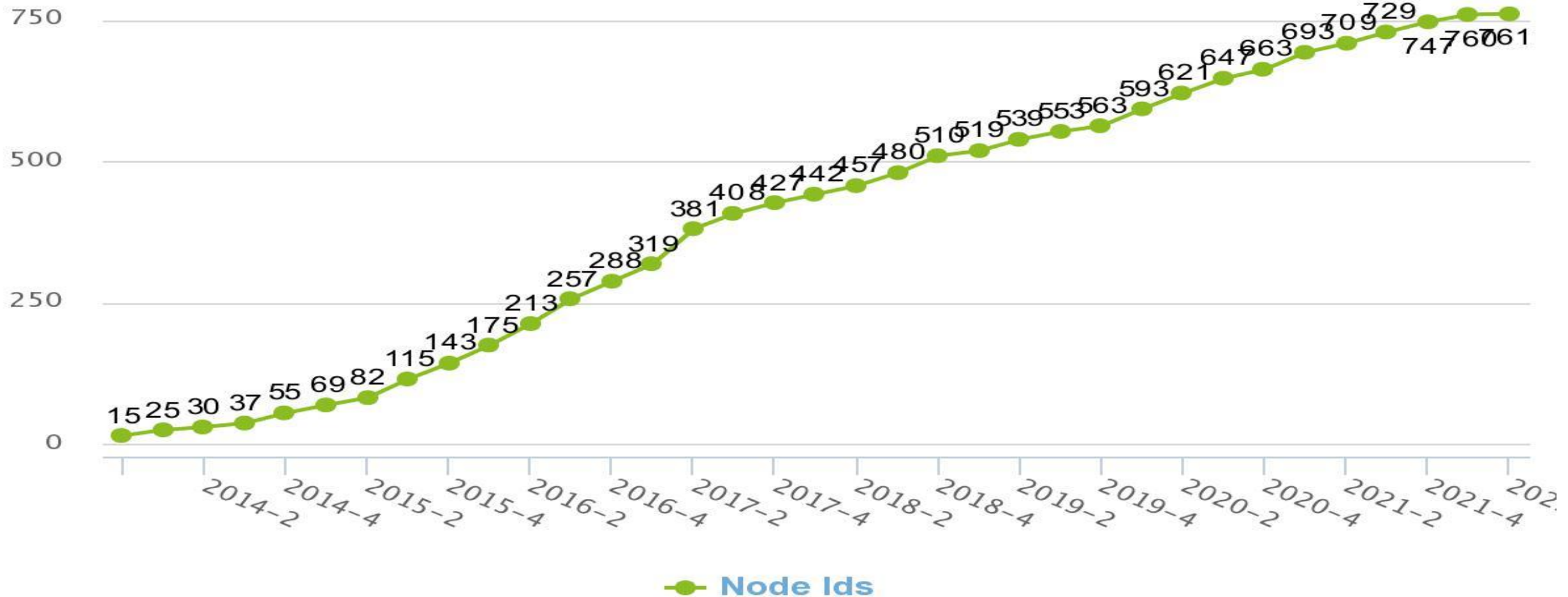
# CTCN > The STORY

## GROWTH OF CTC NETWORK

- 2 to 3 years to establish
- 2 to 3 years to operationalize
- 5 plus years to engage and streamline

# More than 760 Network members / Institutions

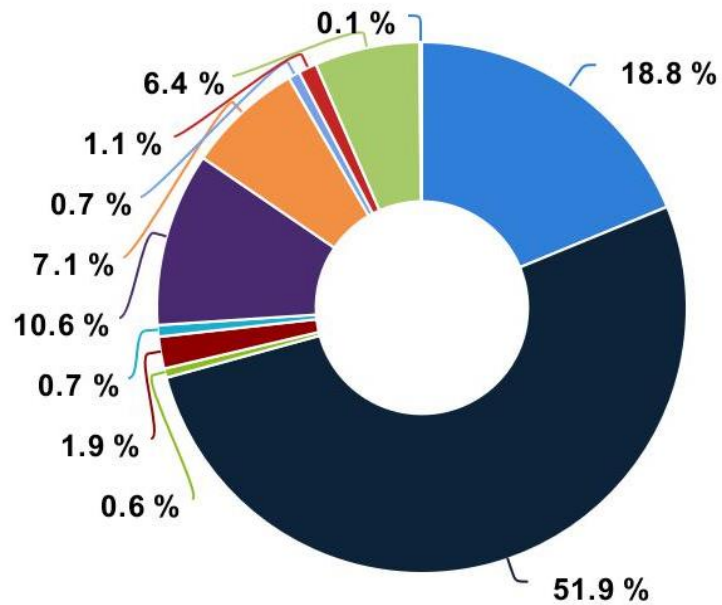
## Accumulated number of Network applications received





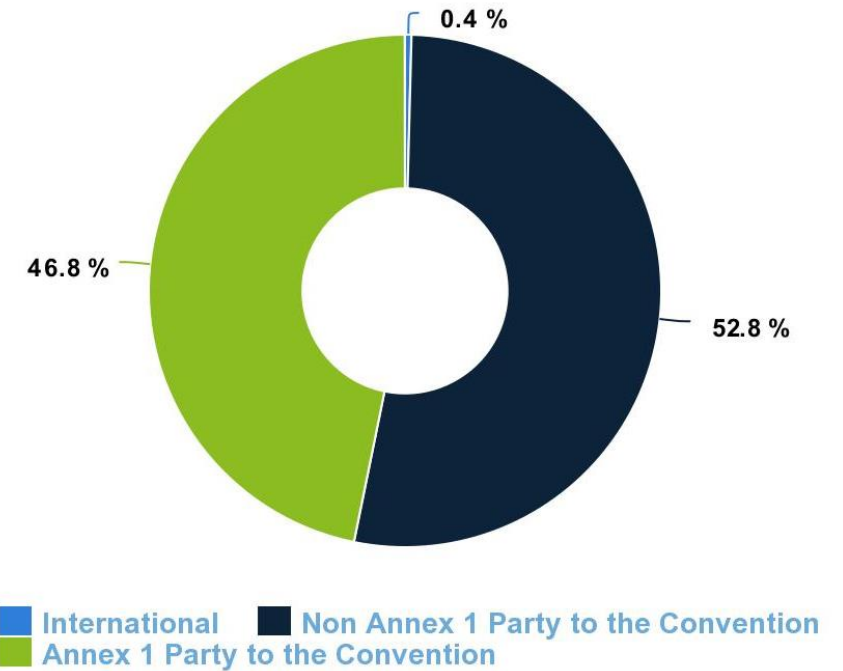
# Types of Network Members

Distribution of network members by type of institution



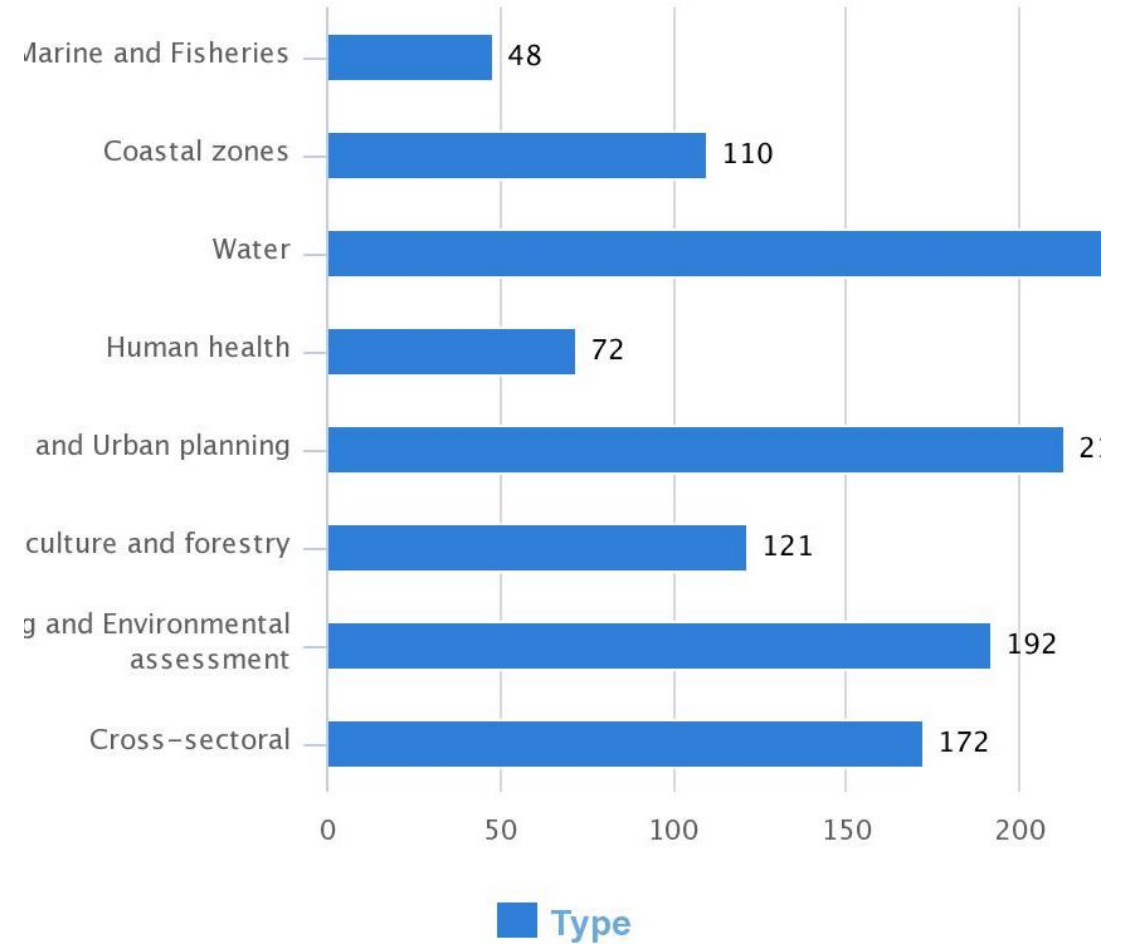
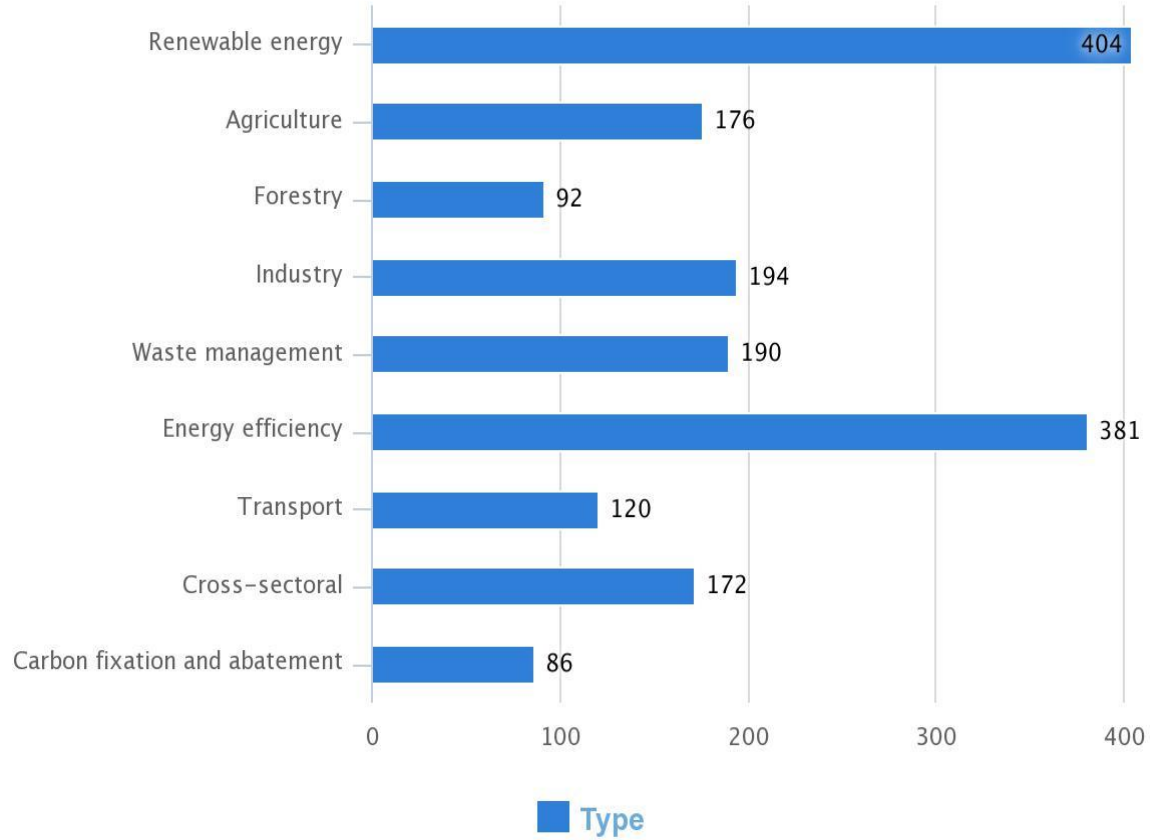
- Research and academic institution
- Financial institution
- Non-governmental organisation
- Partnership
- Private sector organization
- Intergovernmental organisation
- Public sector organisation
- Initiative
- Not for profit organisation
- Other
- Regional organisation

Distribution of network members by UNFCCC Annex 1 :



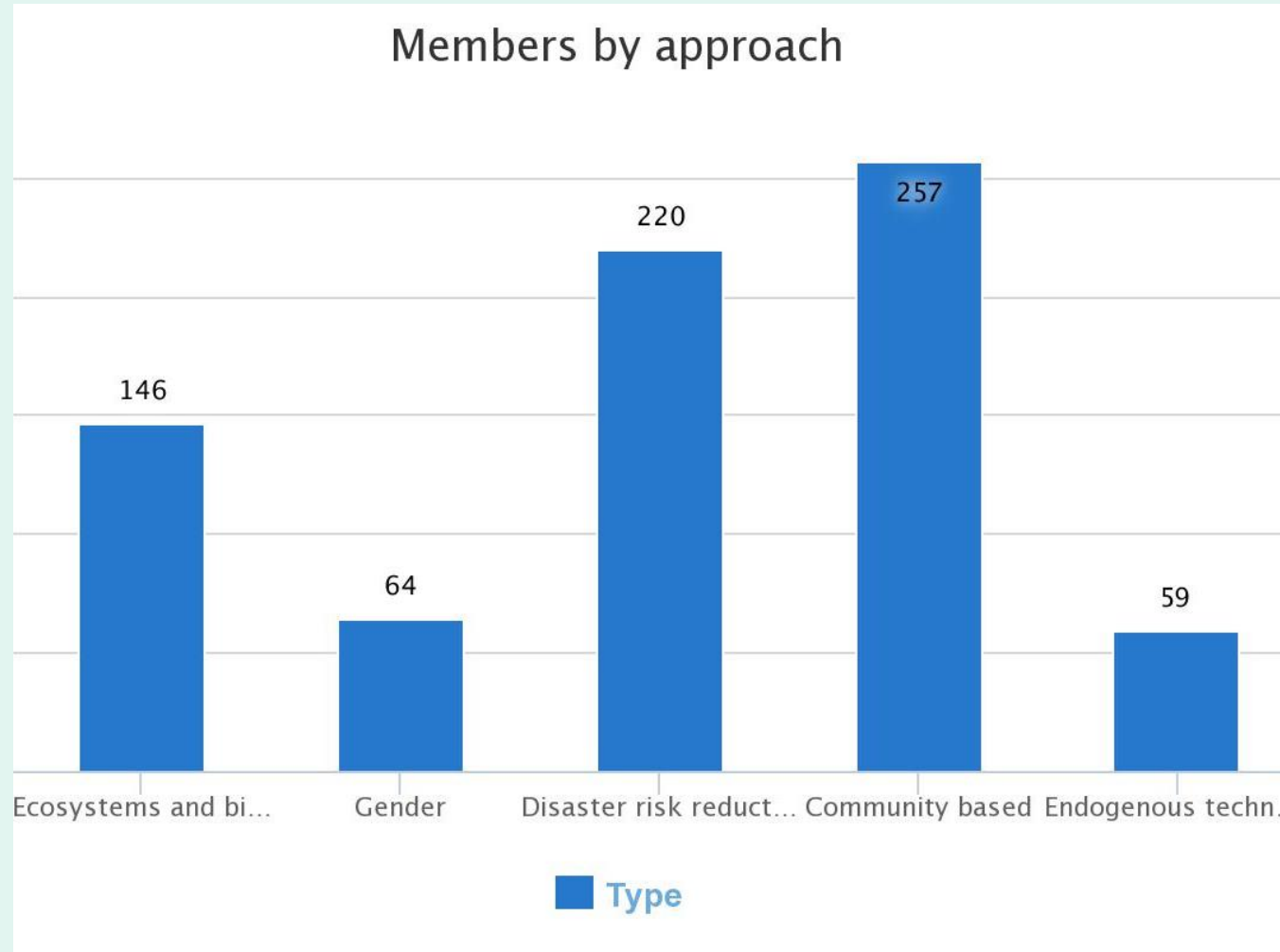
- International
- Annex 1 Party to the Convention
- Non Annex 1 Party to the Convention

# Areas of Service

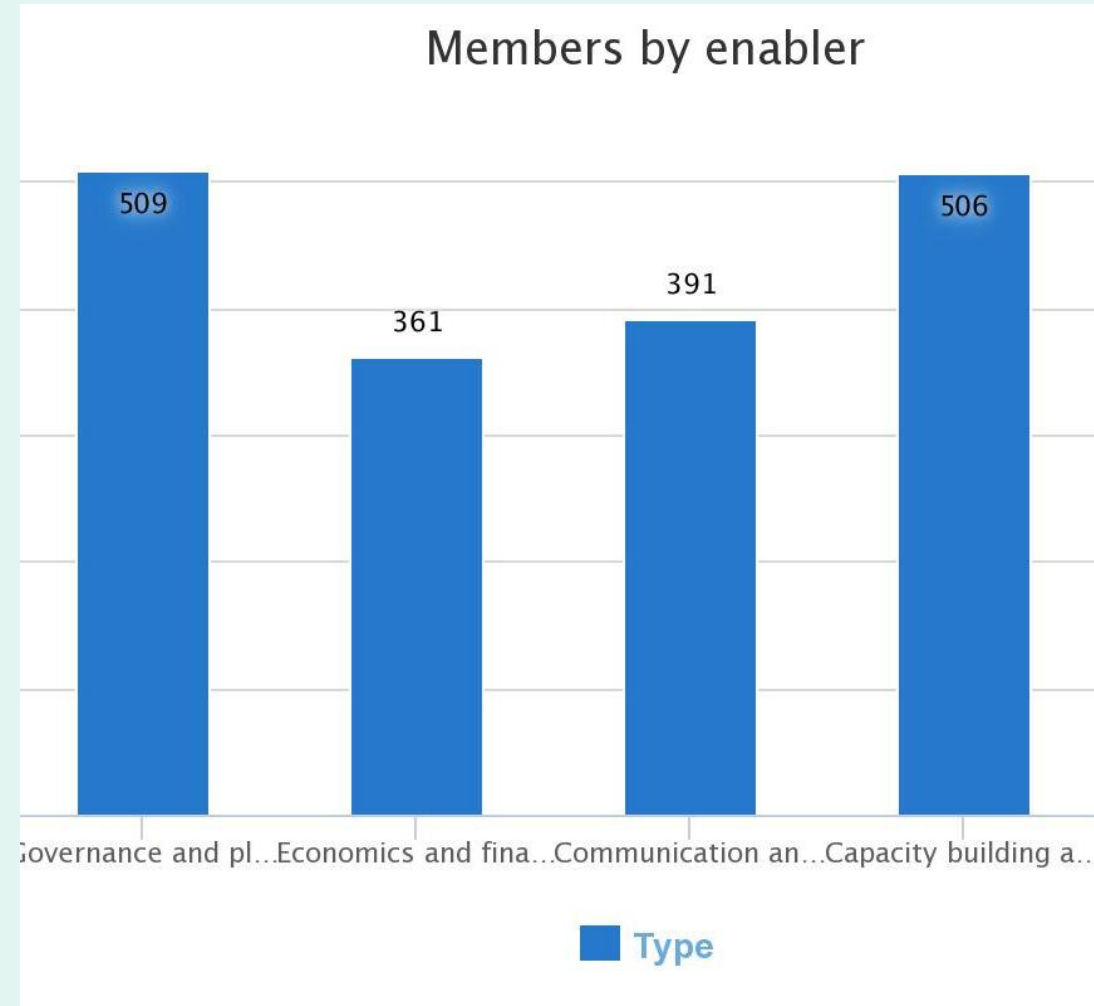


# By Enablers and Approaches

### Members by approach



### Members by enabler





# CTCN

UN Climate Technology Centre & Network



CTCN Secretariat  
UN City, Marmorvej 51  
DK-2100 Copenhagen, Denmark  
[www.ctc-n.org](http://www.ctc-n.org)  
[ctcn@un.org](mailto:ctcn@un.org)



UNFCCC\_CTCN



UNFCCC.CTCN

## Rajiv Garg Technology Manager , [gargr@un.org](mailto:gargr@un.org)

Supported by

