

LDC GROUP PRESENTATION TO THE UNFCCC TECHNICAL WORKSHOP ON THE SANTIAGO NETWORK FOR LOSS AND DAMAGE: OPERATIONAL MODALITIES OF THE SNLD

Ambassador Adao Soares Barbosa

Copenhagen, Denmark

4 May 2022

PRINCIPLES GUIDING THE OPERATION OF THE SNLD

- The LDC group believes that it is most critical for the SNLD to provide assistance in
 - identifying needs,
 - communicating those needs, and
 - accessing the action and technical, financial, and capacity-building support needed to address those needs.
- The SNLD must be country-led and country-driven.
- The SNLD should assist developing countries in addressing loss and damage from slow onset and extreme events. We do not see it as an additional mechanism for disaster risk reduction or adaptation, but rather it will focus on the needs of countries in preparing for and responding to loss and damage.

OPERATIONAL MODALITIES

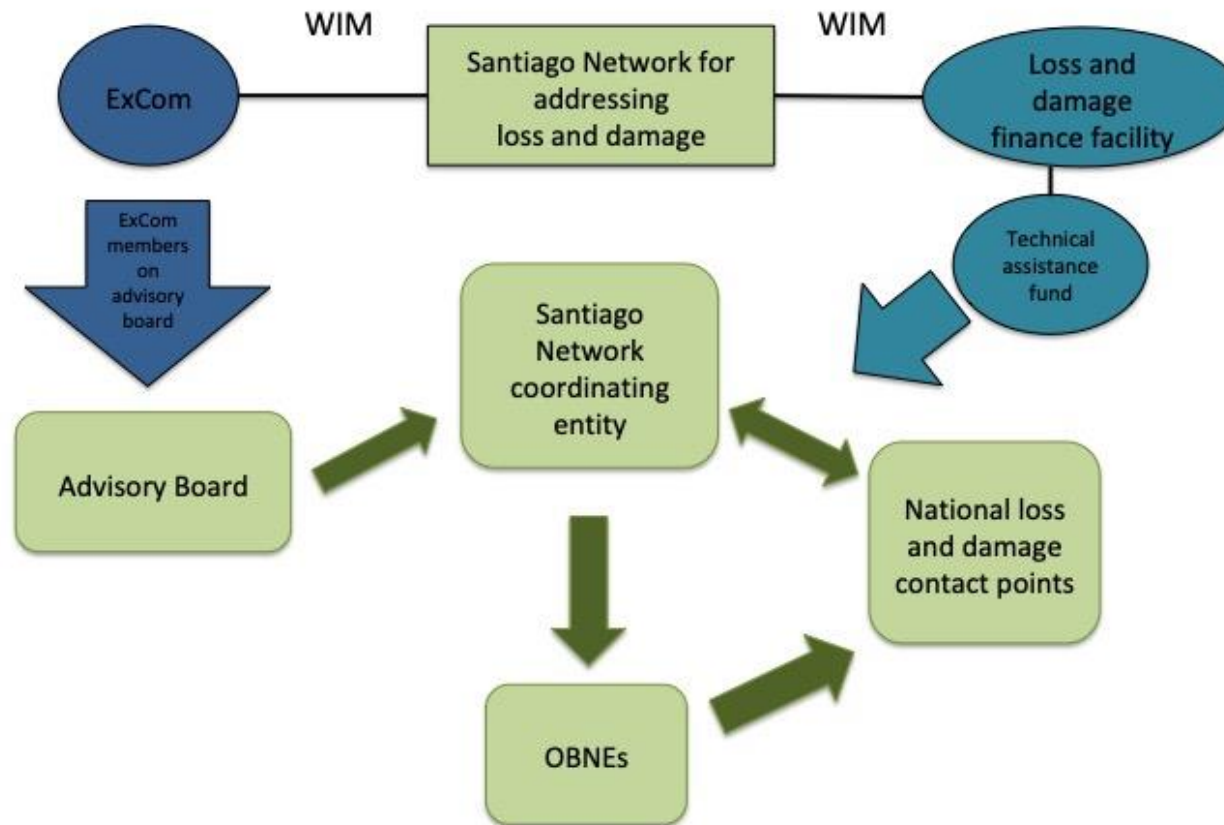
- The SNLD will assist country-level, country-led processes in identifying and communicating technical assistance needs and priorities. Steps include
 - Developing a common needs assessment process: Loss and Damage Needs Assessments (LDNAs)
 - Establishing national-level LDNAs as the potential communication vehicle for technical assistance and associated finance needs
- With capacity-building and financial support, the national contact point on loss and damage could be the liaison between national processes and the SNLD
- After preparing an LDNA, the next step at the national level would be the development of a national loss and damage action plan, with technical assistance priorities included
- The SNLD will require dedicated and additional funding, including financing for carrying out LDNAs, capacity-building and support for national contact points, and for the provision of technical assistance.

ROLE OF IMPLEMENTING ENTITY AND OBNES

- Assist in identifying types of relevant technical assistance needed and available
- Actively connect those seeking technical assistance with best suited OBNEs
- Assist in accessing technical assistance that is available, including from OBNEs
- Facilitate access to action and support (finance, technology, and capacity building)

Until the establishment of the LD Finance Facility, financing for these activities should be provided through the operating entities of the Financial Mechanism

Illustration of basic relationships between bodies under the WIM: the SNLD, the ExCom, and the future Finance Facility





THANK YOU

Web: www.ldc-climate.org

Email: ldcchairsenegal@gmail.com

Twitter: [@LDCchairUNFCCC](https://twitter.com/LDCchairUNFCCC)

The LDC Group on Climate Change brings together the work and vision of the Least Developed Countries at the intergovernmental negotiations, under the UN Framework Convention on Climate Change.