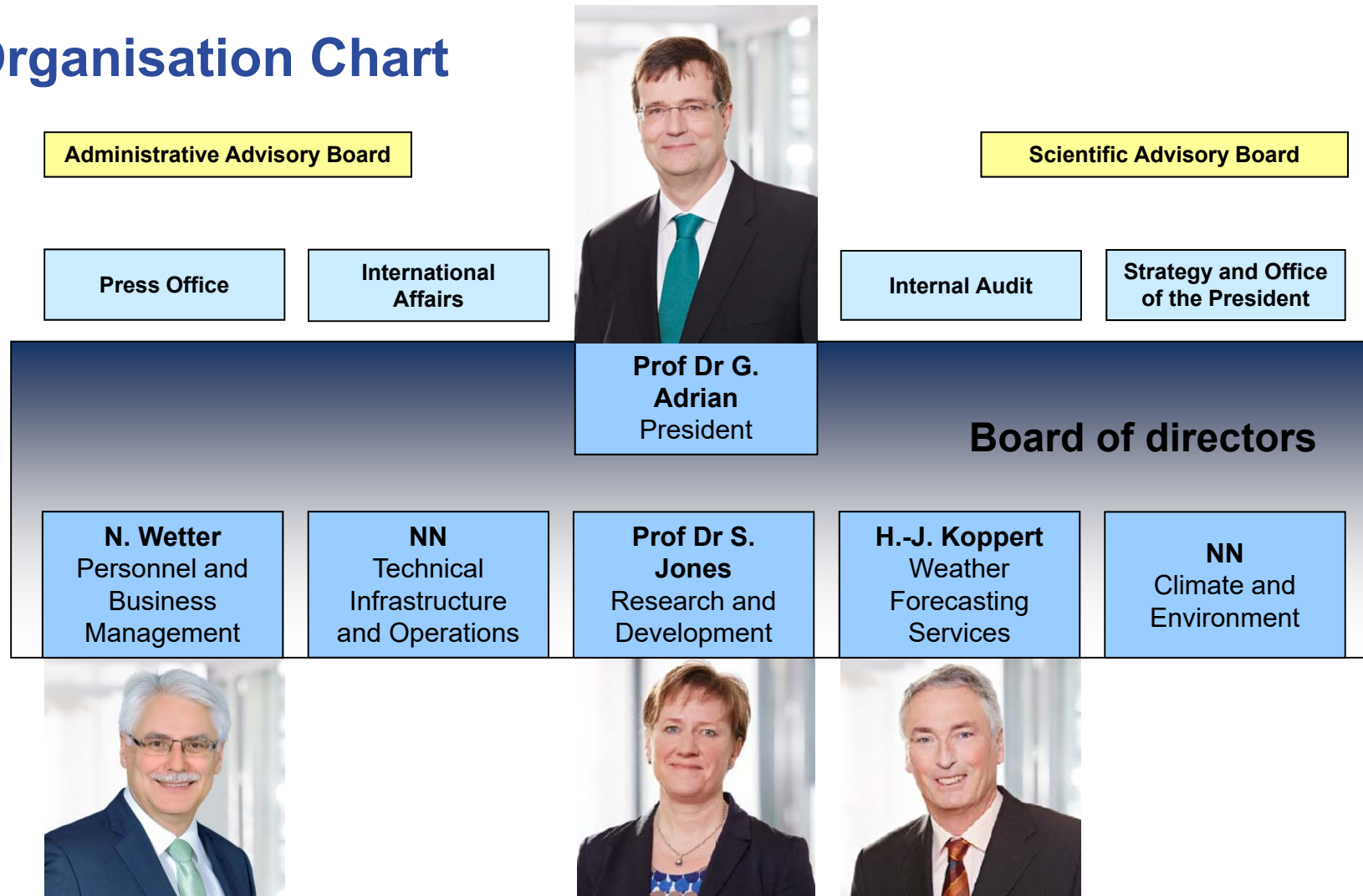




Deutscher Wetterdienst
National Meteorological Service
of the Federal Republic of Germany

Organisation Chart



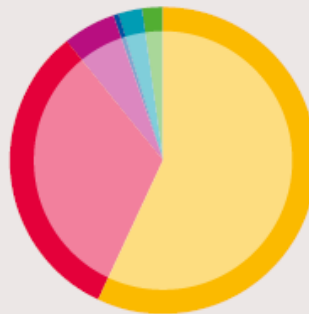
DWD in figures (2018)

- Total budget (expenditure) 343 Mio €
- Available budget 190 Mio €
- Investments 33,5 Mio €
- Expenditure on staff 117,4 Mio €
- Revenues 14 Mio €



Contributions to international organisations in 2017

EUMETSAT	102,871	57.0 %
ESA	58,512	32.4 %
ECMWF	9,782	5.4 %
EUMETNET	1,260	0.7 %
WMO	4,437	2.4 %
Other	3,745	2.1 %



Number of established posts



DWD's services and customers

Services

- 500.000 short range forecasts
- 240.000 aviation briefings annually
- 20.000 warnings annually, FeWIS information system
- 8.000 expertises p.a.
- Data + model products
- Public weather service: basic warnings and forecasts, climate information

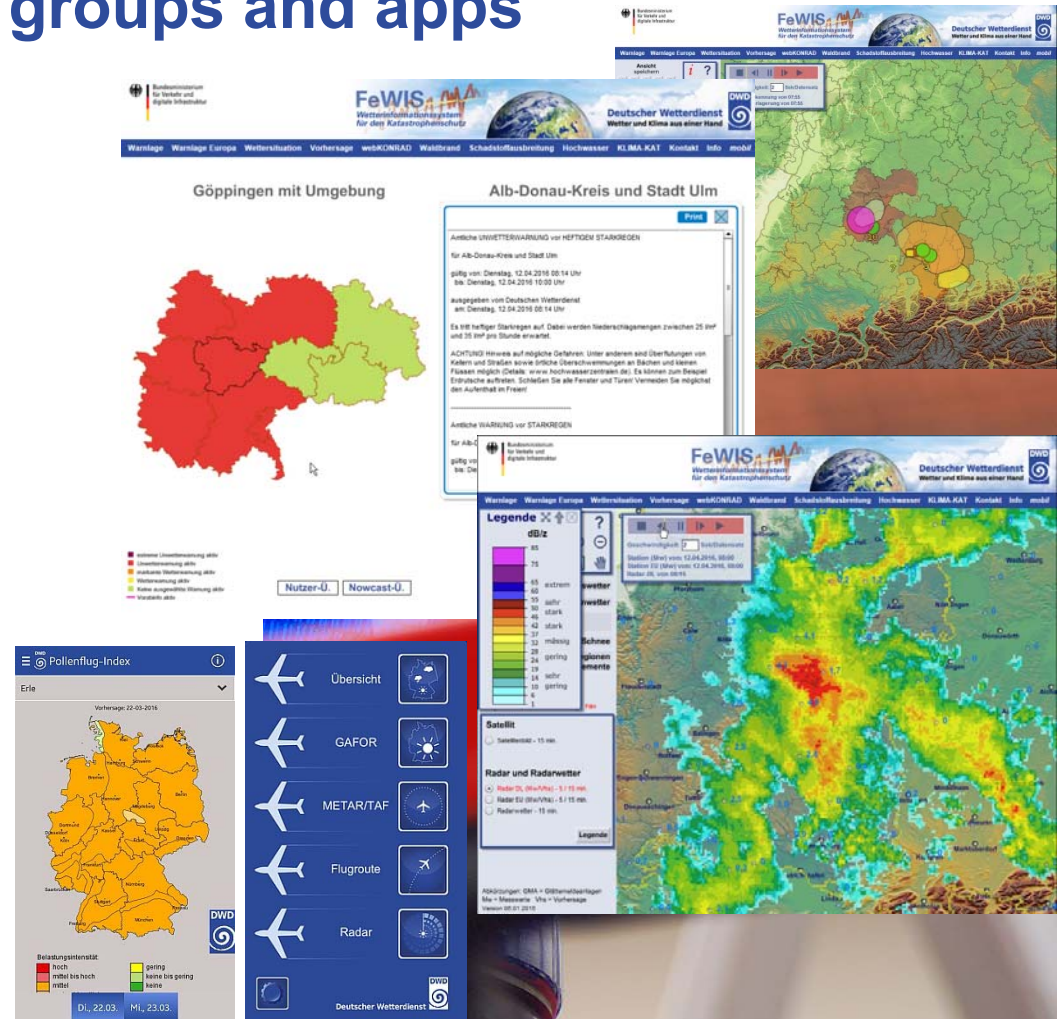
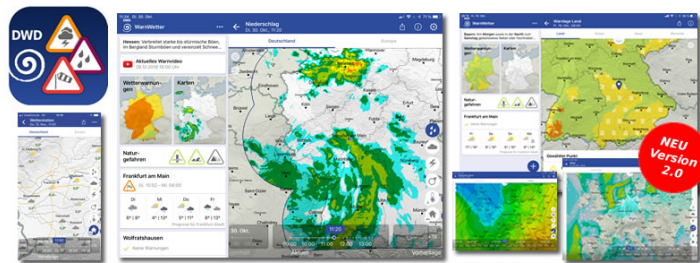


Customers

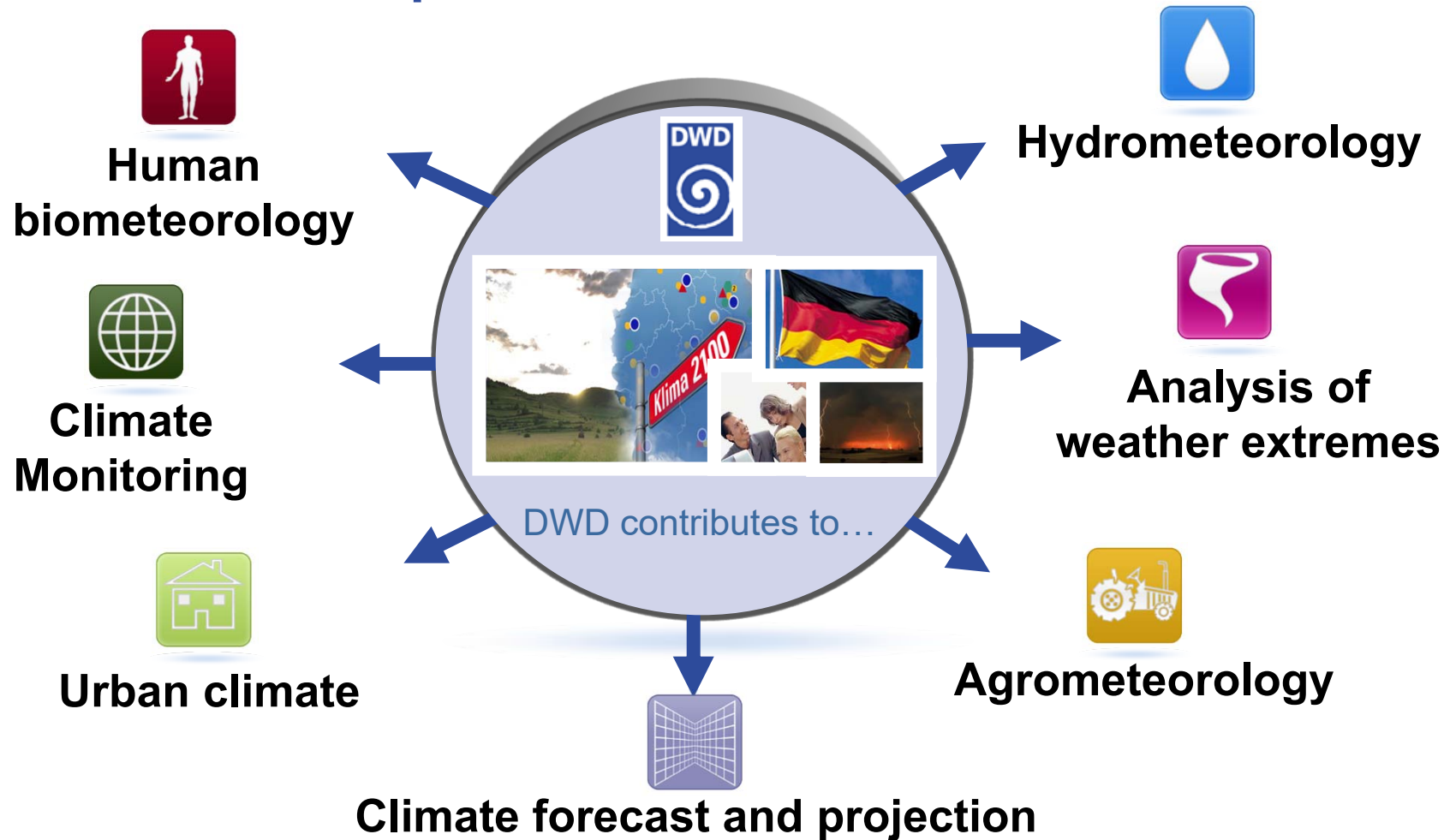
- Aviation, shipping and road traffic
- Energy provider
- Disaster management units, fire brigades, rescue services
- Administration
- Hydrologic authorities, public health sector, agriculture, climate and environment
- Public and media
- Teaching and research

Systems for special user groups and apps

- FeWIS – Fire Brigade Weather Information System
 - Specific, configurable, internet-based application
 - About 1500 customers
- WarnWetter App - warnings
- Aviation Weather App
- Pollenflug App – pollen forecast



DWD's field of expertise in climate services



WMO RA VI RCC Node-CM

- Since May 2013 designated as WMO RA VI RCC Network
- DWD's contributions:
 - overall coordination of the Network and
 - Lead of the RCC Node on Climate Monitoring



Imprint Contact

WMO RA VI
RCC Network

OVERVIEW THE NETWORK SERVICE

Welcome to WMO RA VI Regional Climate Centre Network (WMO RA VI RCC Network)

RCCs are Centres of Excellence that assist WMO Members in a given region to deliver better climate services and products including regional long-range forecasts, and to strengthen their capacity to meet national climate information needs.

The RCC system in WMO RA VI is being established as network of centres which provide regional level services according to their individual strengths, while making use of as many national level data and products as possible. Today these nodes have been established.

 RCC Network (RA VI) De Bilt Node on Climate Data Services	 RCC Network (RA VI) Offenbach Node on Climate Monitoring	 RCC Network (RA VI) Toulouse and Moscow Node on Long-range Forecastings	 RCC Network (RA VI) Toulouse and Moscow Node on Long-range Forecastings
--	---	---	---



Imprint Contact

WMO RA VI
Regional Climate Centre
on Climate Monitoring

OVERVIEW THE NETWORK PRODUCTS SERVICE

Welcome to WMO RA VI RCC Node-CM!

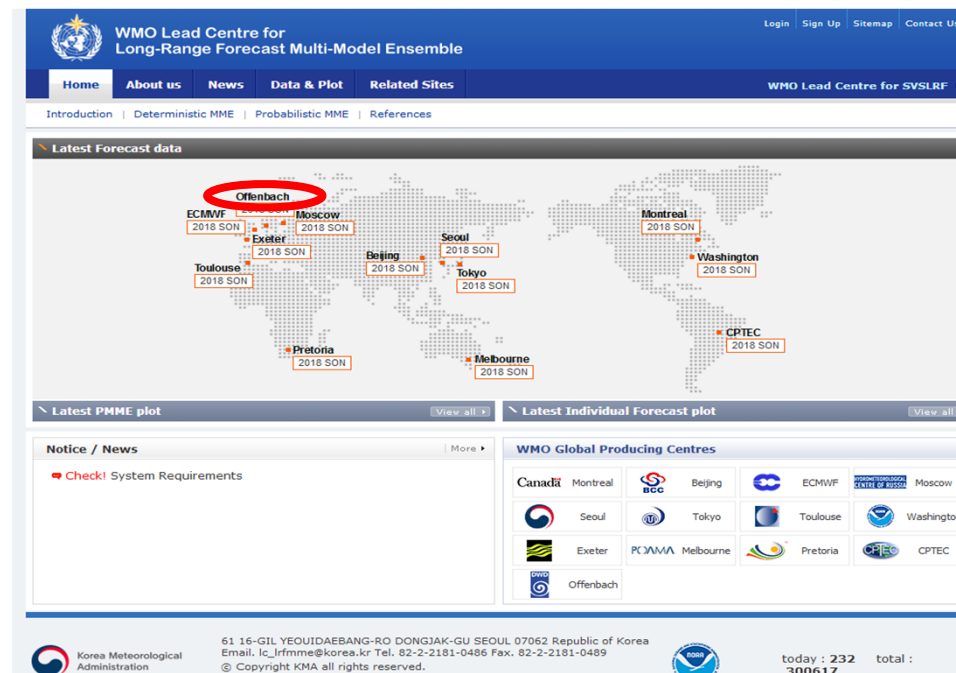
RCC Node-CM is the RAVI Regional Climate Centre Offenbach Node on Climate Monitoring. It provides regularly climate monitoring products and services for the RA VI Region (Europe and Middle East).

Welcome! Bienvenue! ¡Bienvenido! Добро пожаловать! مرحبا! Willkommen! Welkom! Dobrodošli! Hoşgeldiniz! Vitkoment! Добро пожаловать! Bienvenuto! Sveiki!



WMO Global Producing Centre

- Since October 2018, WMO Lead Center for long range forecasts (WMO GPCLRF) in Korea is receiving the seasonal predictions



WMO Lead Centre for Long-Range Forecast Multi-Model Ensemble

Home About us News Data & Plot Related Sites WMO Lead Centre for SVSLRF

Introduction | Deterministic MME | Probabilistic MME | References

Latest Forecast data

Offenbach
ECMWF 2018 SON
Moscow 2018 SON
Exeter 2018 SON
Toulouse 2018 SON
Beijing 2018 SON
Seoul 2018 SON
Tokyo 2018 SON
Montreal 2018 SON
Washington 2018 SON
Pretoria 2018 SON
Melbourne 2018 SON
CPTC 2018 SON

Latest PMME plot | Latest Individual Forecast plot

Notice / News
Check! System Requirements

WMO Global Producing Centres

Canada	Montreal	Beijing	ECMWF	Moscow
Seoul	Tokyo	Toulouse	Washington	
Exeter	PCWVA	Melbourne	Pretoria	CPTC
Offenbach				

Korea Meteorological Administration
© Copyright KMA all rights reserved.

today : 232 total : 300617



Contact:

Deutscher Wetterdienst (DWD)

Stefan Rösner

Head, Division 'Regional Climate Monitoring'

Frankfurter Str. 135

D - 63067 Offenbach

E-Mail: Stefan.Rosner@dwd.de

or: KU23@dwd.de

Tel.: +49 (0) 69 / 8062 - 4306



Where you can meet us

- At our website: www.dwd.de
- Our severe weather warnings can be found at www.wettergefahren.de
- WarnWetter app for weather warnings (www.dwd.de/app)
- Free newsletter for your region (www.dwd.de/newsletter)
- Via social media





Thank you for listening