



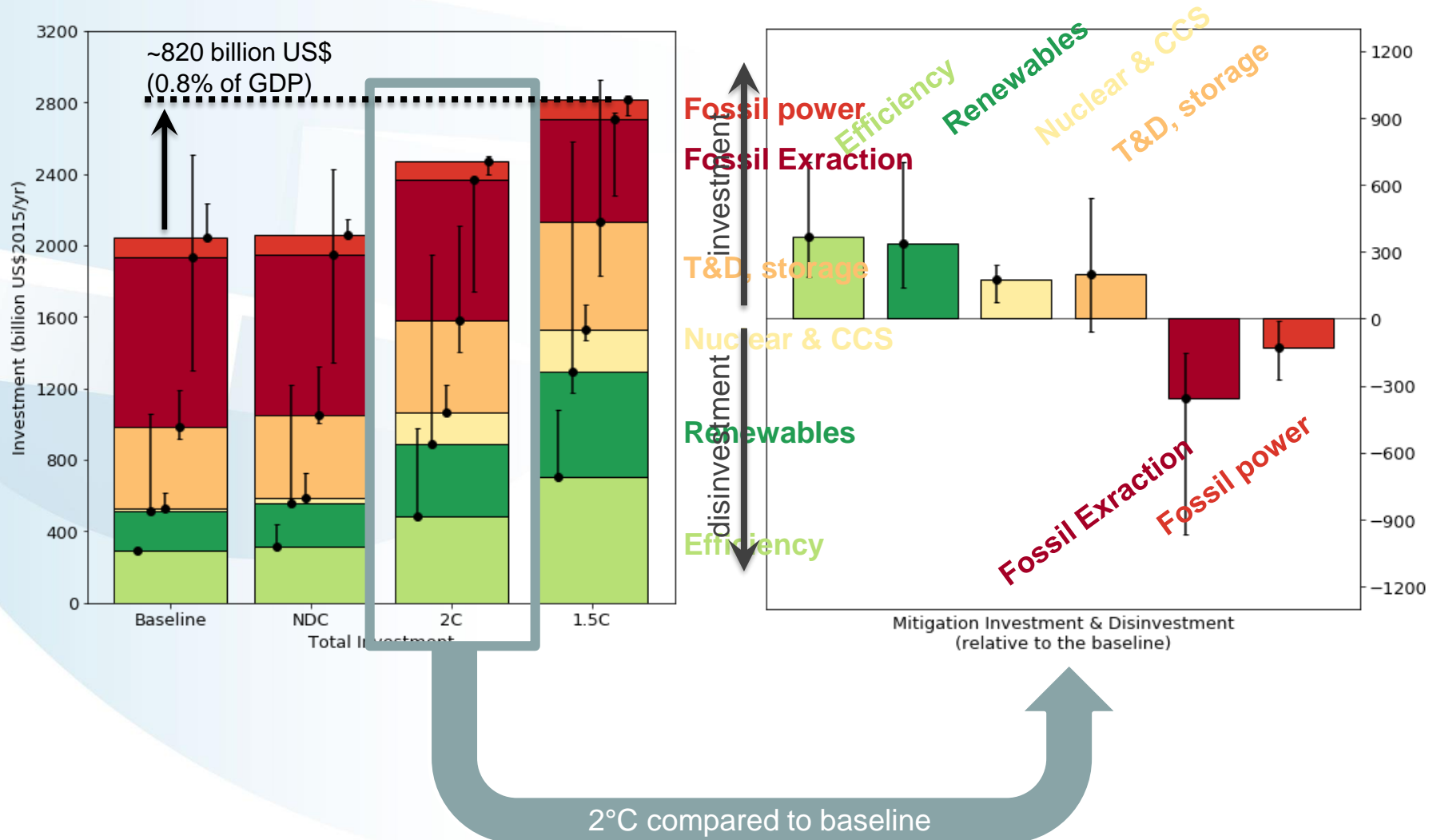
Insights on investment needs and finance for mitigation actions

Keywan Riahi,
International Institute for Applied Systems Analysis
(IIASA)

*In-session Workshop on Long-term Climate Finance in 2019
UN Climate Change Conference (Room Nairobi)
24 June 2019*

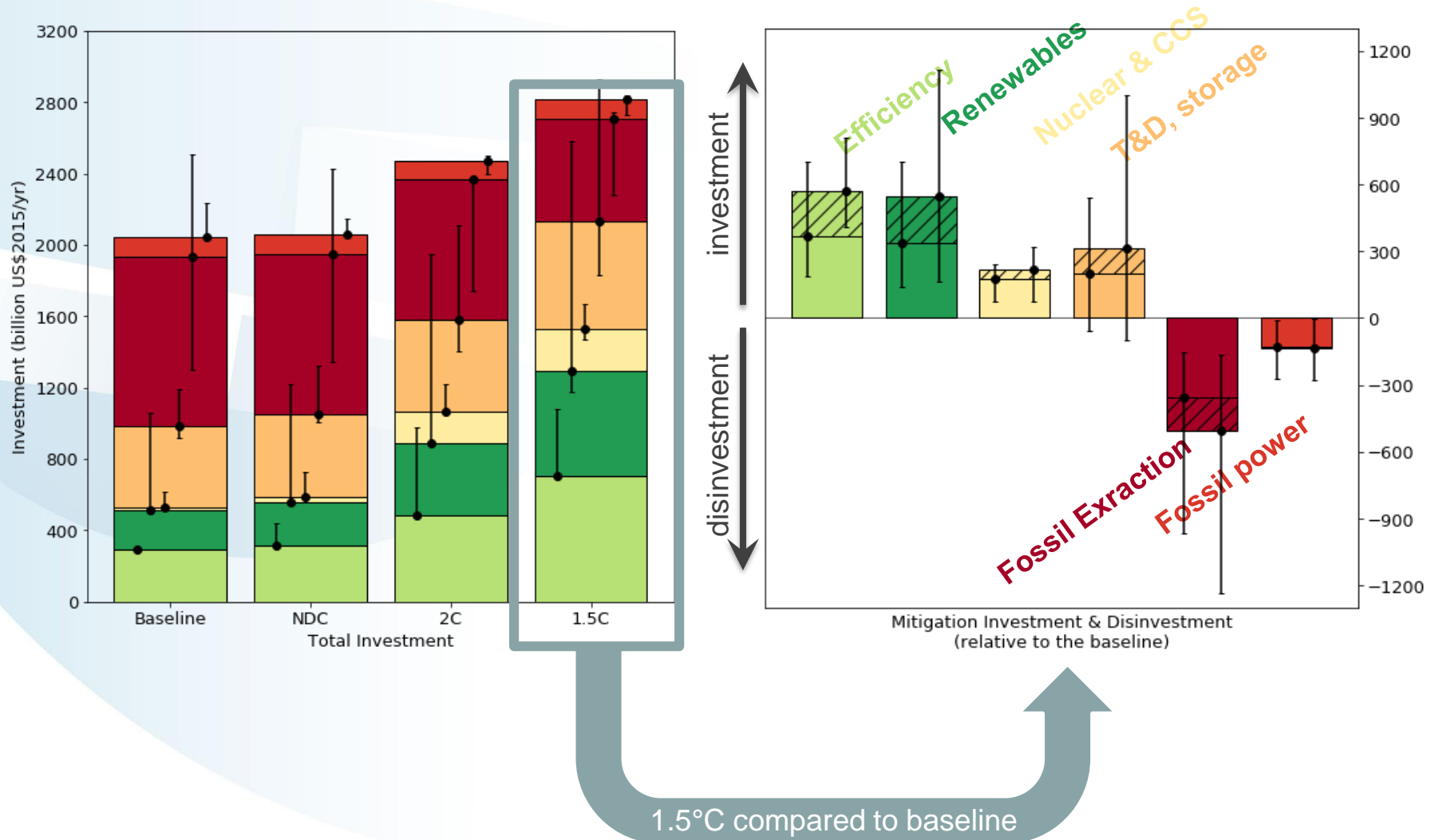
Global Investment Portfolios for 1.5 and 2C

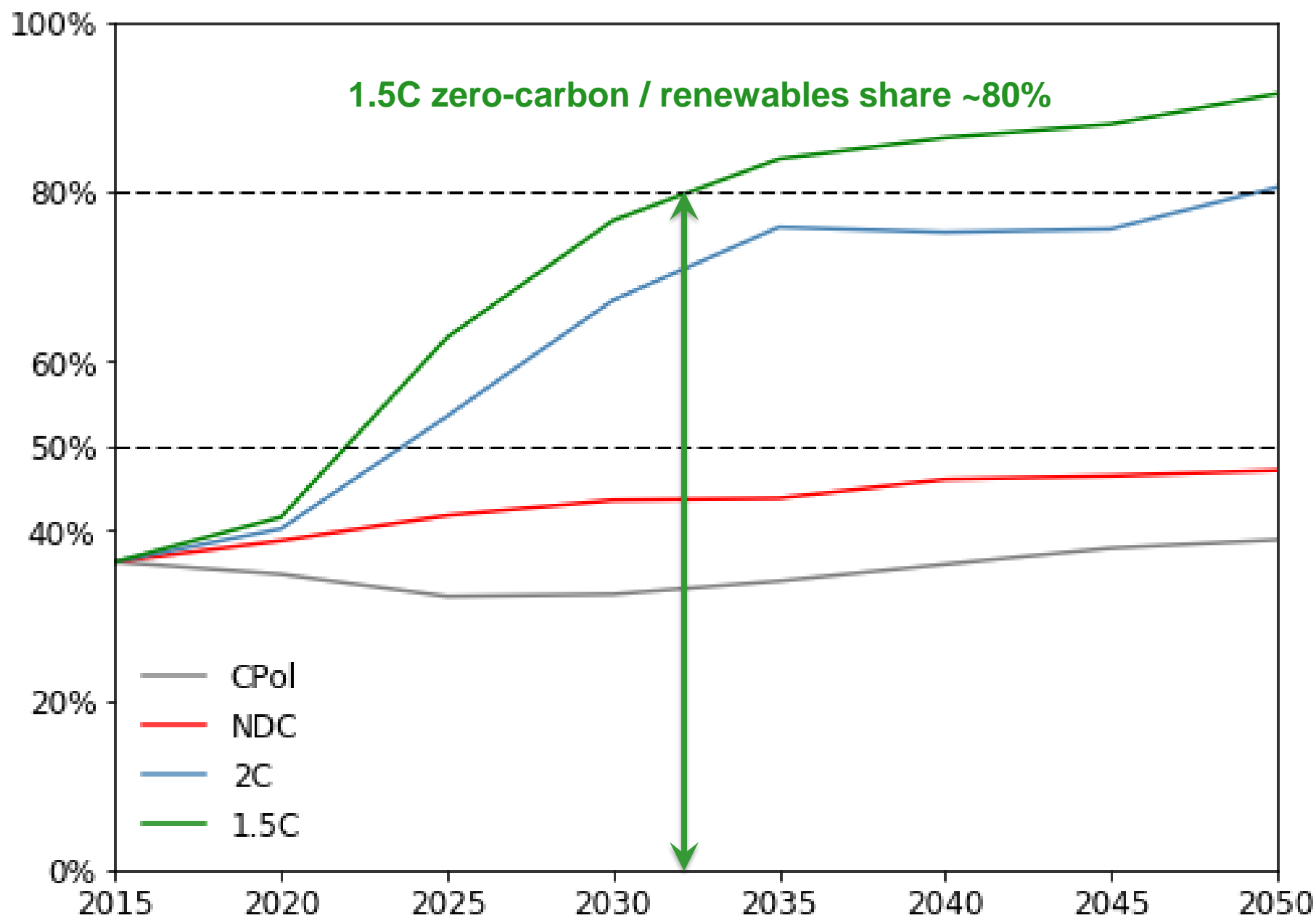
Average annual investments 2010 to 2050



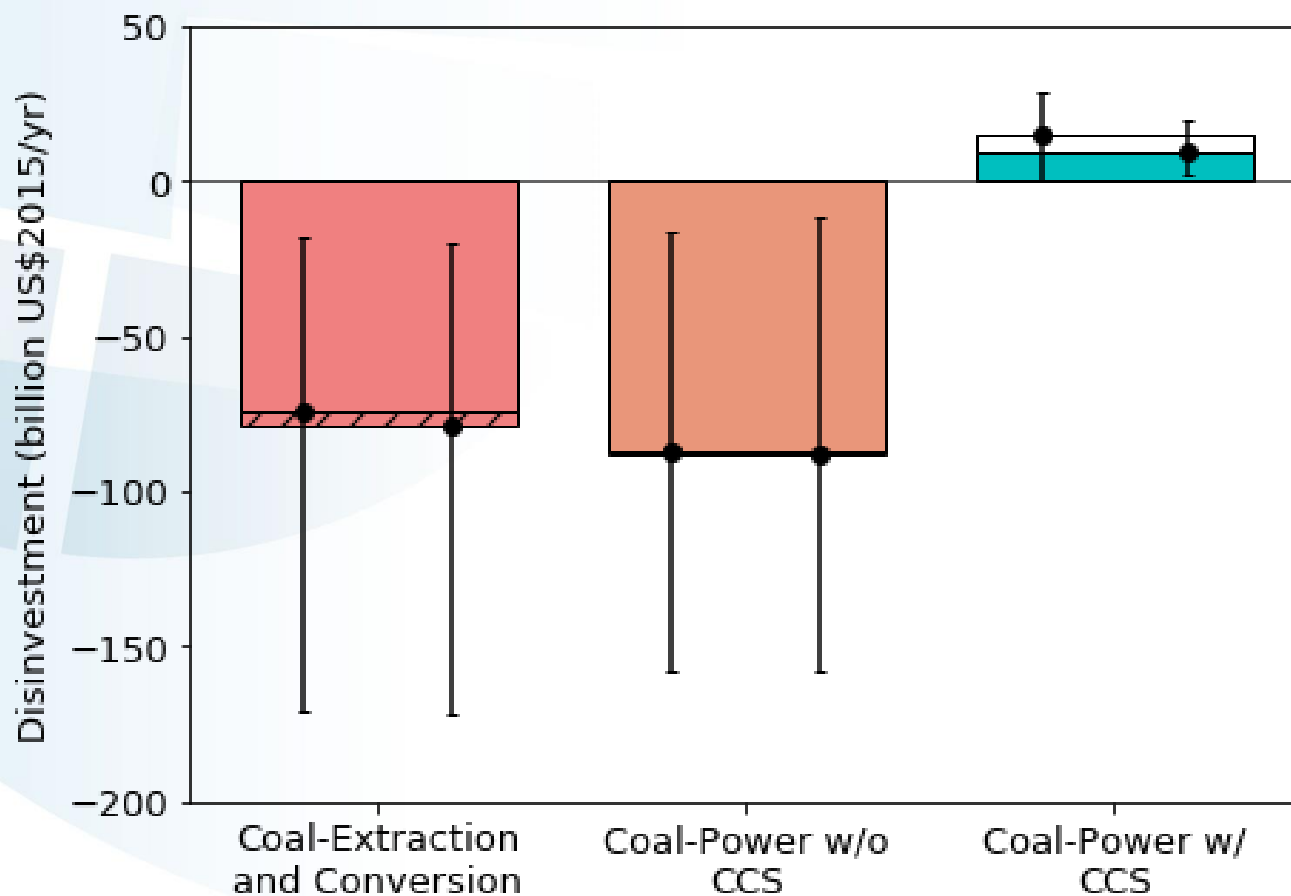
Global Investment Portfolios for 1.5 and 2C

Average annual investments 2010 to 2050



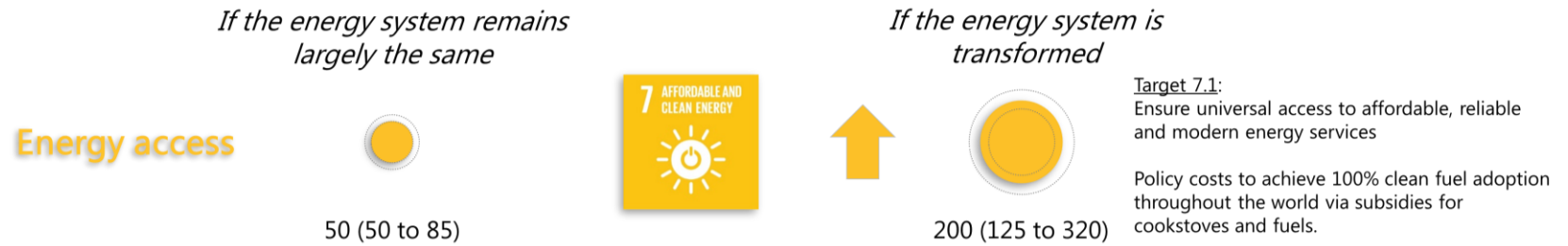


1.5C and 2C imply zero investment into coal-based electricity globally (except some small CCS investments)



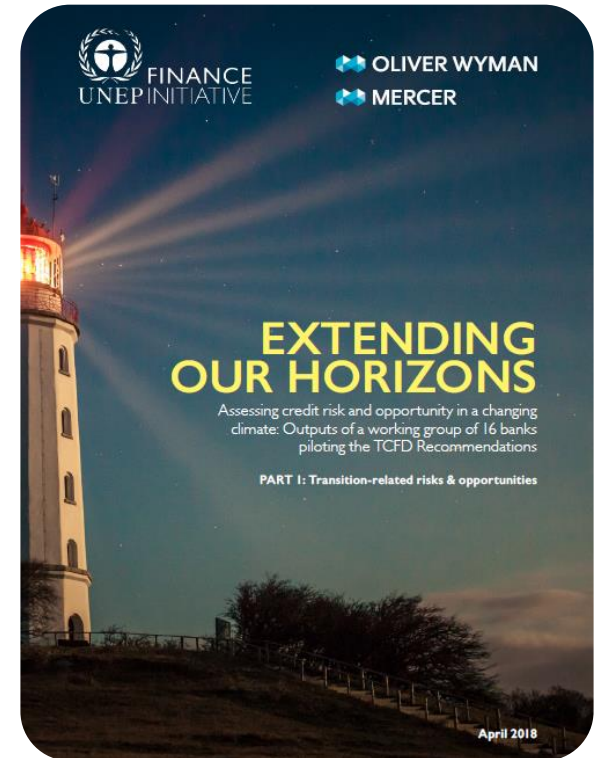


Impact on investments for other SDGs

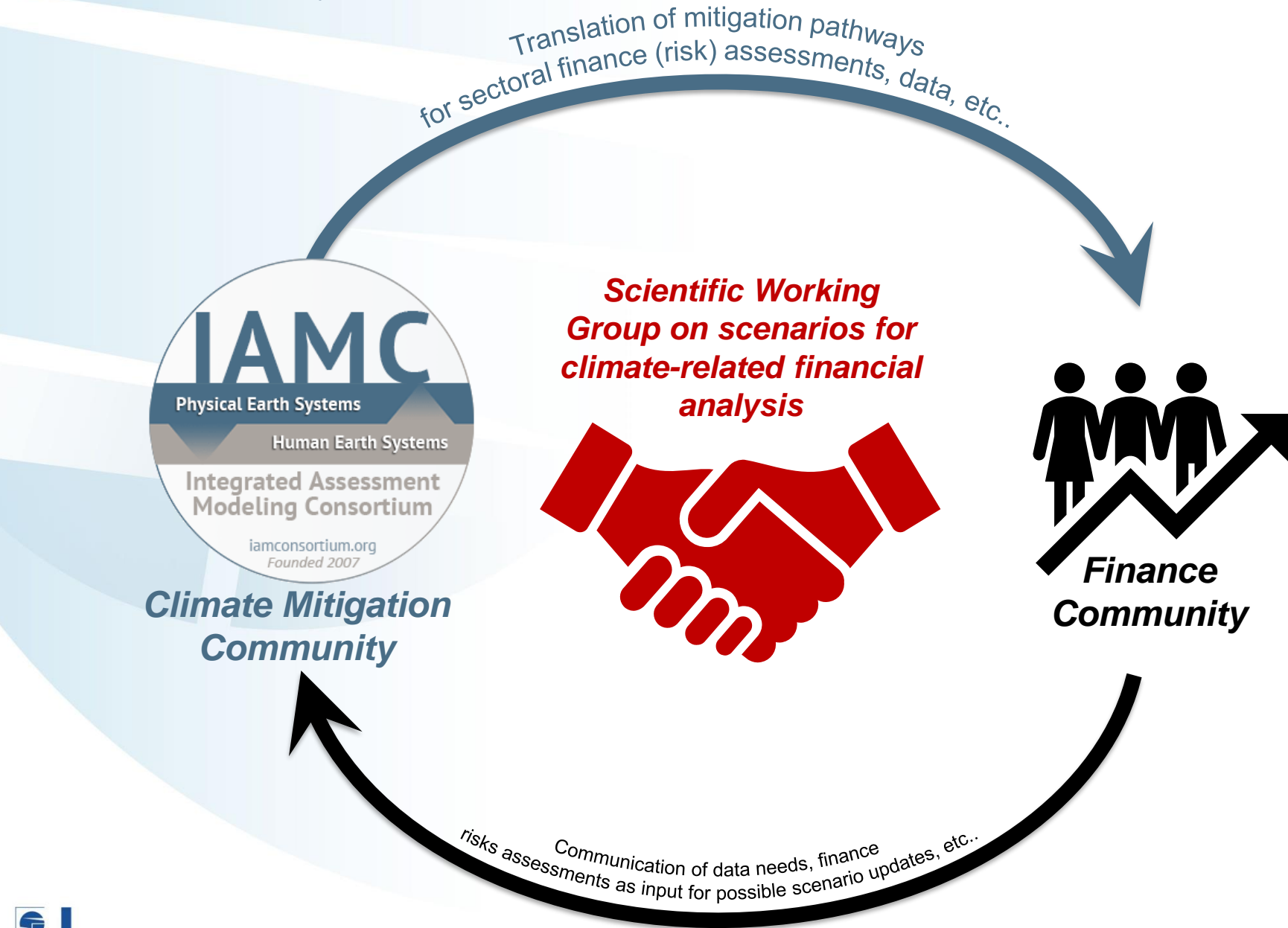


Mobilizing Investments & Finance

- A range of different instruments available
- Climate-related Financial (Risk) Disclosure
- Initial piloting study by UNEP-FI together with Wyman, Mercer, IIASA & PIK
- Four risk factor pathways (RFP)
 - Direct emissions costs
 - Indirect emission costs
 - Low-carbon capital expenditure
 - Revenue effects



New Community effort to bridge the gap between the climate mitigation and finance community





International Institute for
Applied Systems Analysis
www.iiasa.ac.at

science for global insight

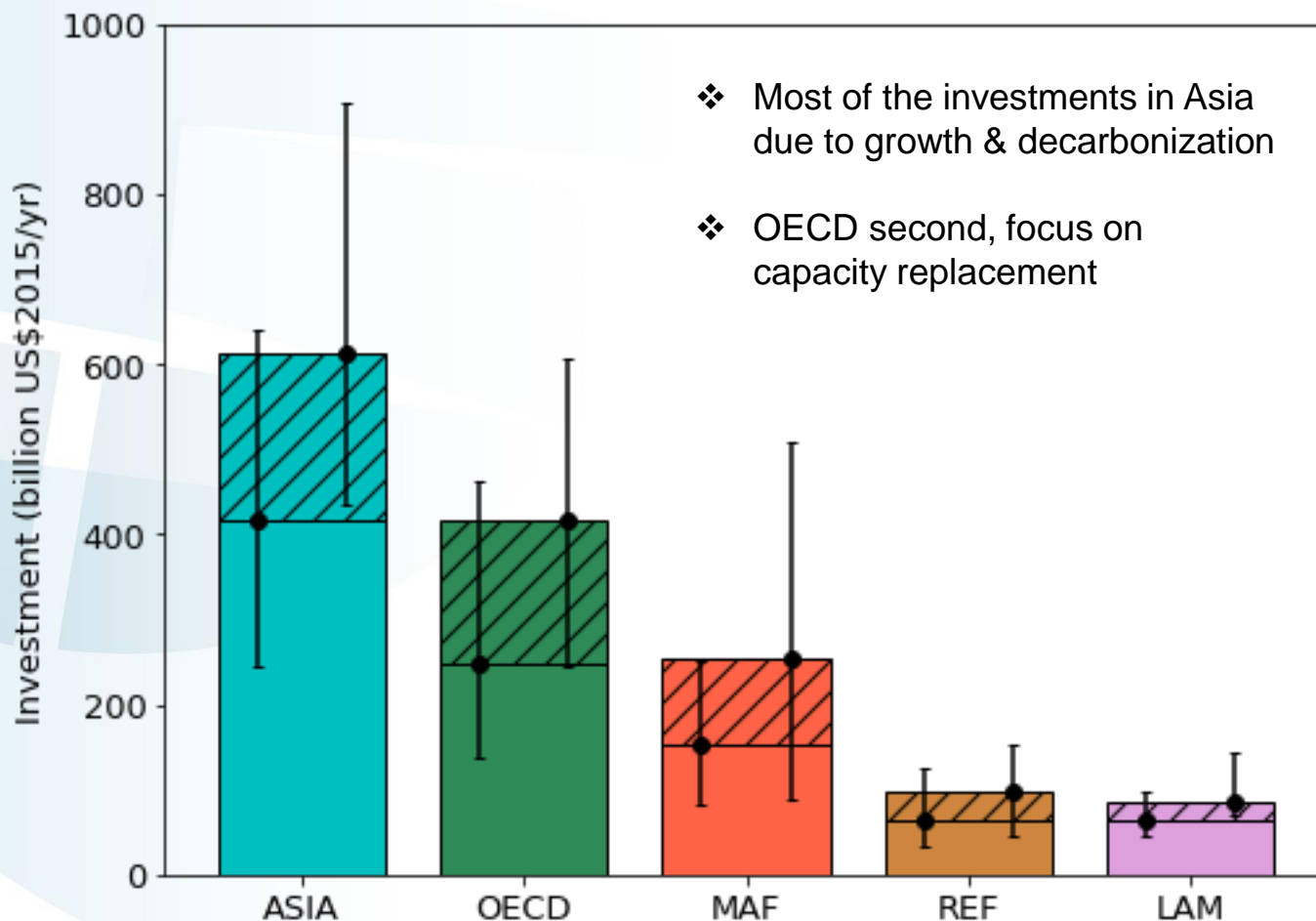
Thank you
riahi@iiasa.ac.at



IIASA, International Institute for Applied Systems Analysis

Regional Investments (1.5 vs 2C)

2015-2050, compared to baseline



Regional Disinvestments (1.5C vs 2C)

2015-2050, compared to baseline

