



LoCAL: An existing relevant Non-Market Approach



LoCAL
 LOCAL CLIMATE ADAPTIVE
 LIVING FACILITY



Funded by
 the European Union



Sweden
 Sverige



Belgium
 partner in development



MINISTRY OF FOREIGN AFFAIRS
 OF DENMARK



Schweizerische Eidgenossenschaft
 Confédération suisse
 Confederazione Svizzera
 Confederaziun svizra
 Swiss Cooperation Office in Mozambique



Norwegian Ministry
 of Foreign Affairs



THE GOVERNMENT
 OF THE GRAND DUCHY OF LUXEMBOURG
 Ministry of Foreign and European Affairs

Directorate for Development Cooperation
 and Humanitarian Affairs



giz Deutsche Gesellschaft
 für Internationale
 Zusammenarbeit (GIZ) GmbH



AFRICA
 CLIMATE
 CHANGE
 FUND



AFRICAN DEVELOPMENT
 BANK GROUP



Generalitat de Catalunya
 Government of Catalonia



Agència Catalana
 de Cooperació
 al Desenvolupament



Themes for spin-off groups

The LoCAL Facility is of the view that the themes for the spin-off groups should focus on the progress of implementation of the initial focus areas of NMA and the facilitation of support to advance implementation.

In addition, the themes should discuss and share information on best practices, lessons learned and case studies for the possibility of replicating successful NMAs.

- a) Options for replicating successful NMAs, including at the local, subnational, and national contexts,
- b) Facilitate cooperation for the implementation of NMAs between Parties and other stakeholders to contribute to the implementation of ambitious NDCs and
- c) Enhance and upscale existing initiatives and/or mechanisms as NMA pilots, such as the LoCAL Mechanism and the Adaptation Benefits Mechanism (ABM).



A description of the non-market approach and the implementing entities



LoCAL : Introduction

A mechanism for financing **locally led adaptation** to enable local authorities and their communities to contribute to the implementation of the **Paris Agreement, NDCs, NAPs**, the SDG 13 and deliver on Paris Agreement commitments.

Designed by UNCDF to help local governments and their communities **access and effectively use climate finance at the local level**

Promotes the **integration** of climate change adaptation (CCA) in **local government planning and budgeting systems** in a participatory and gender sensitive manner

Uses innovative **Performance-Based Climate Resilience Grants (PBCRGs)** to guarantee programming and verification of local adaptation expenditures





LoCAL expansion mapped

38 countries
26 African nations
29 LDCs
8 SIDS
20 operational with grants

- DELAYED
- DESIGN
- PHASE I
- PHASE II
- PHASE III



LoCAL Board





How LoCAL assists Parties to implement their NDCs, through finance and related technical and capacity building support



LoCAL: Assisting Parties to implement their NDCs in the context of sustainable development and poverty eradication

- **Poverty Eradication (SDG 1)** : 2,236 investments across relevant sectors
- **Zero Hunger (SDG 2)** and **Clean Water and Sanitation (SDG 6)**: est. 18% of investments in agriculture sector and est. 44% of investments in the water sector
- **Life on Land (SDG15)**: est. 35% of investments address sustainable natural resource management
- **Sustainable cities and communities (SDG 11)**: est. 27% construction, transport, storage and other social and infrastructure services
- **Climate Action (SDG 13)**: awareness, mainstreaming, financing and investing



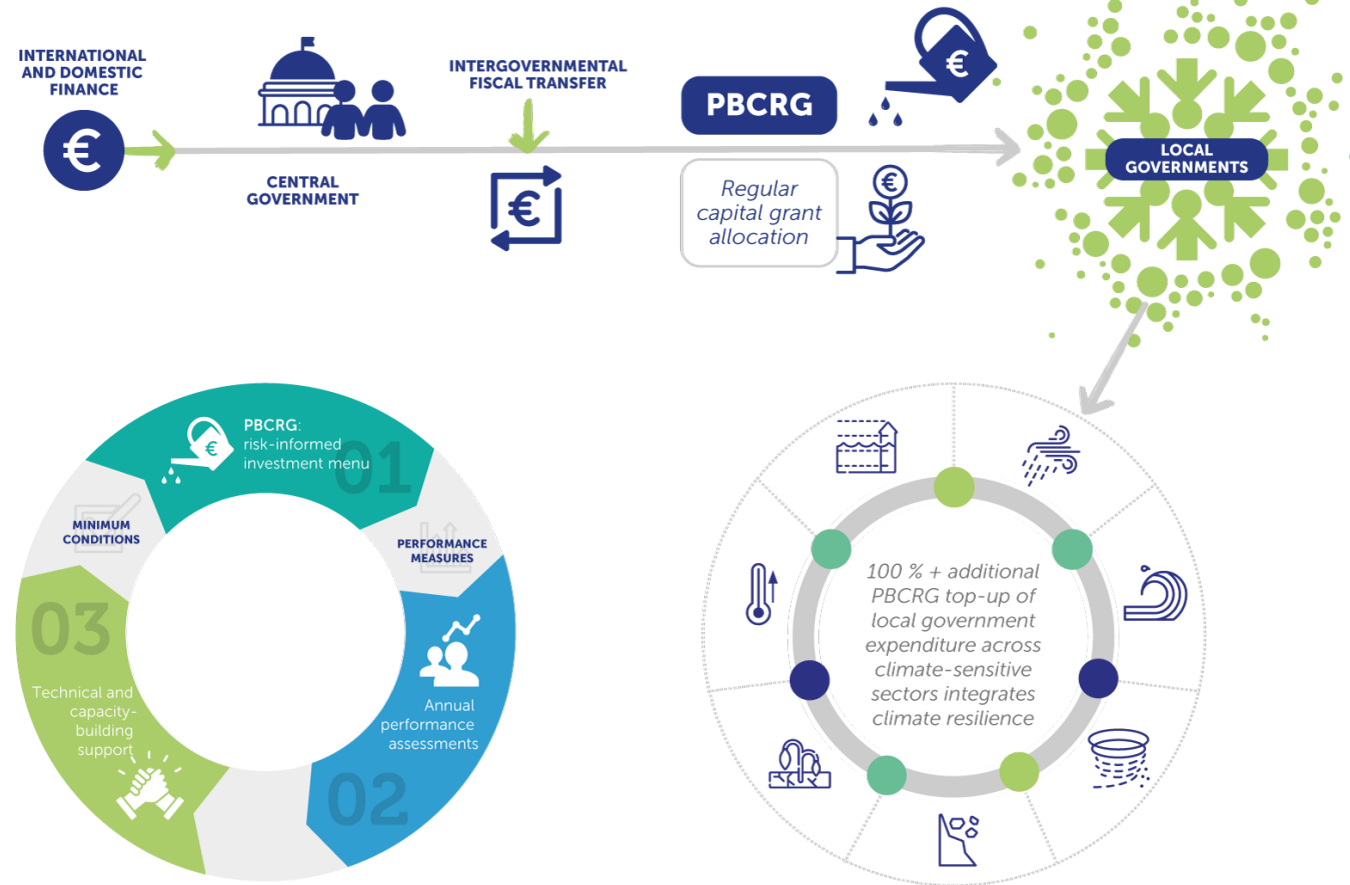


LoCAL: a standard country-based finance mechanism

Performance based climate resilience grants ensure programming and verification of climate change expenditures at the local level while offering strong incentives for performance improvements.

“(…) an example of an initiative **supporting domestic national budget systems** to target **adaptation** actions at the **local level**, while **reinforcing transparency and reporting** through those systems” (Standing Committee on Finance).

“A **financing mechanism for subnational and local climate action** based on **performance-based climate resilient grant systems** and for **integrating adaptation into subnational development plans**” (53th SBI approved report of the stocktaking meeting of the LEG)

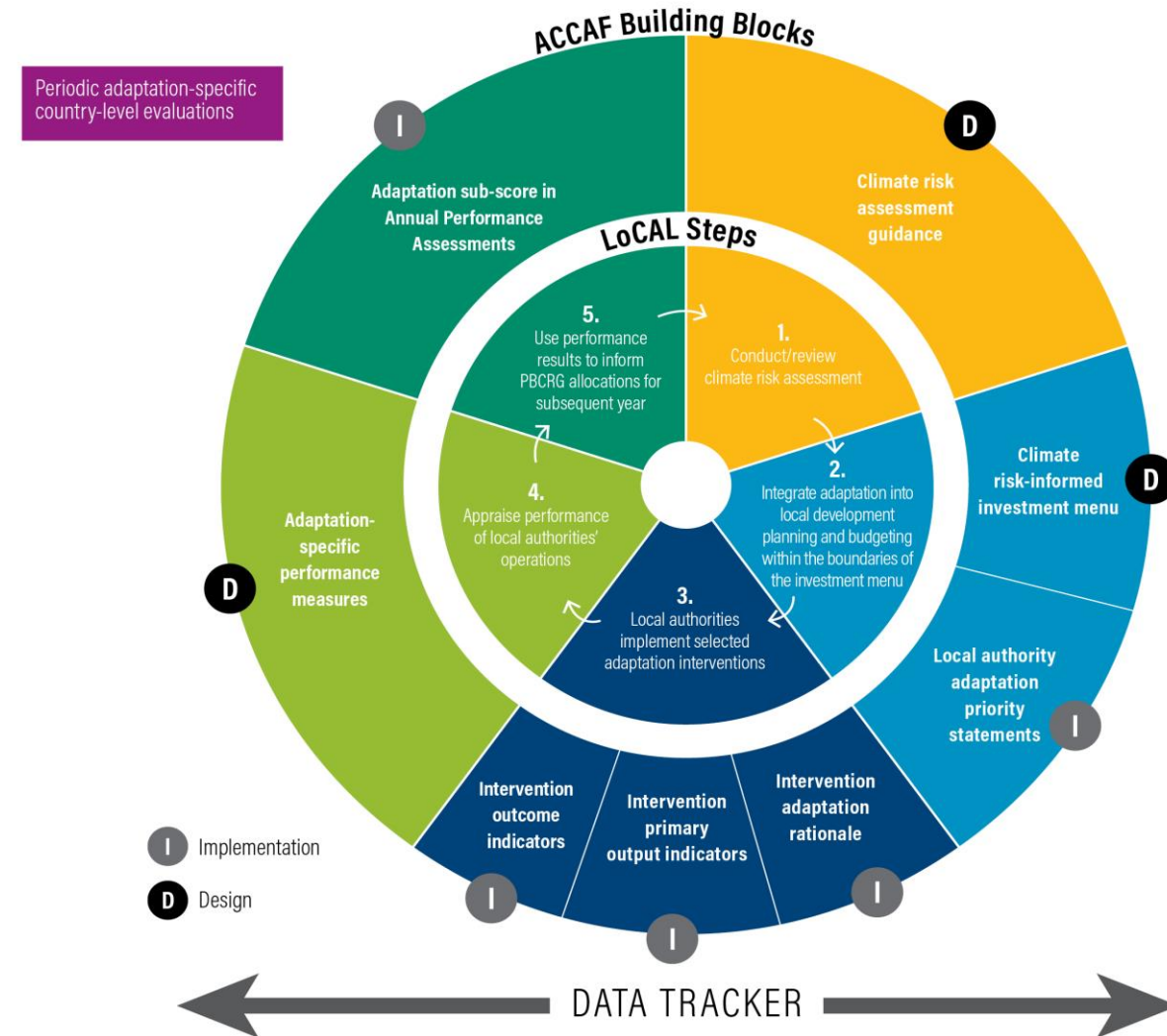




LoCAL: Technical and capacity building support

- In-country **CRVA** for subnational adaptation; local information systems for adaptation (LISA); local **risk-informed planning** and budgeting; execution of local adaptation **investments**; and monitoring, reporting and verification (**MRV**).
- Sensitizing and **engaging communities** on climate change issues and risks, through participatory approaches to resilience building and reinforcing **bottom-up responses** for locally led adaptation.
- Assessing adaptation needs and responses against climate risks and vulnerabilities in a local context, building on the LoCAL's methodology for “**Assessing Climate Change Adaptation Framework (ACCAF)**”.

Figure ES-1 | How the ACCAF Complements the Existing LoCAL Steps



Note: PBCRG stands for performance-based climate resilience grants.
Source: For LoCAL steps, UNCDF; for ACCAF elements, WRI.



thank you