

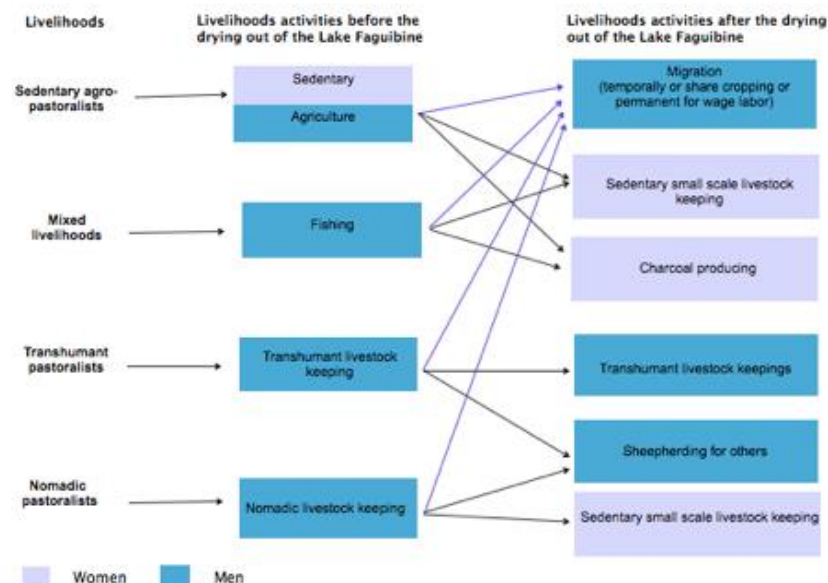
# Equity matters for adaptation: Is adaptation to climate change gender neutral?

## A case study from northern Mali

Djoudi H. (CIFOR-ICRAF), Brockhaus M. (University of Helsinki)

### How is climate change affecting women's vulnerabilities?

1. Increased men migration -> Shifting work loads -> Shifting vulnerabilities (Figure 1)
2. Women's limited access to and control over resources will be exaggerated by climate change induced resource scarcity
3. Lack of women's participation in decision making processes at all levels limits women's adaptive capacity



**Figure 1:** Shifting livelihoods and the resulting gendered repartition of activities after the drying out of Lake Faguibine

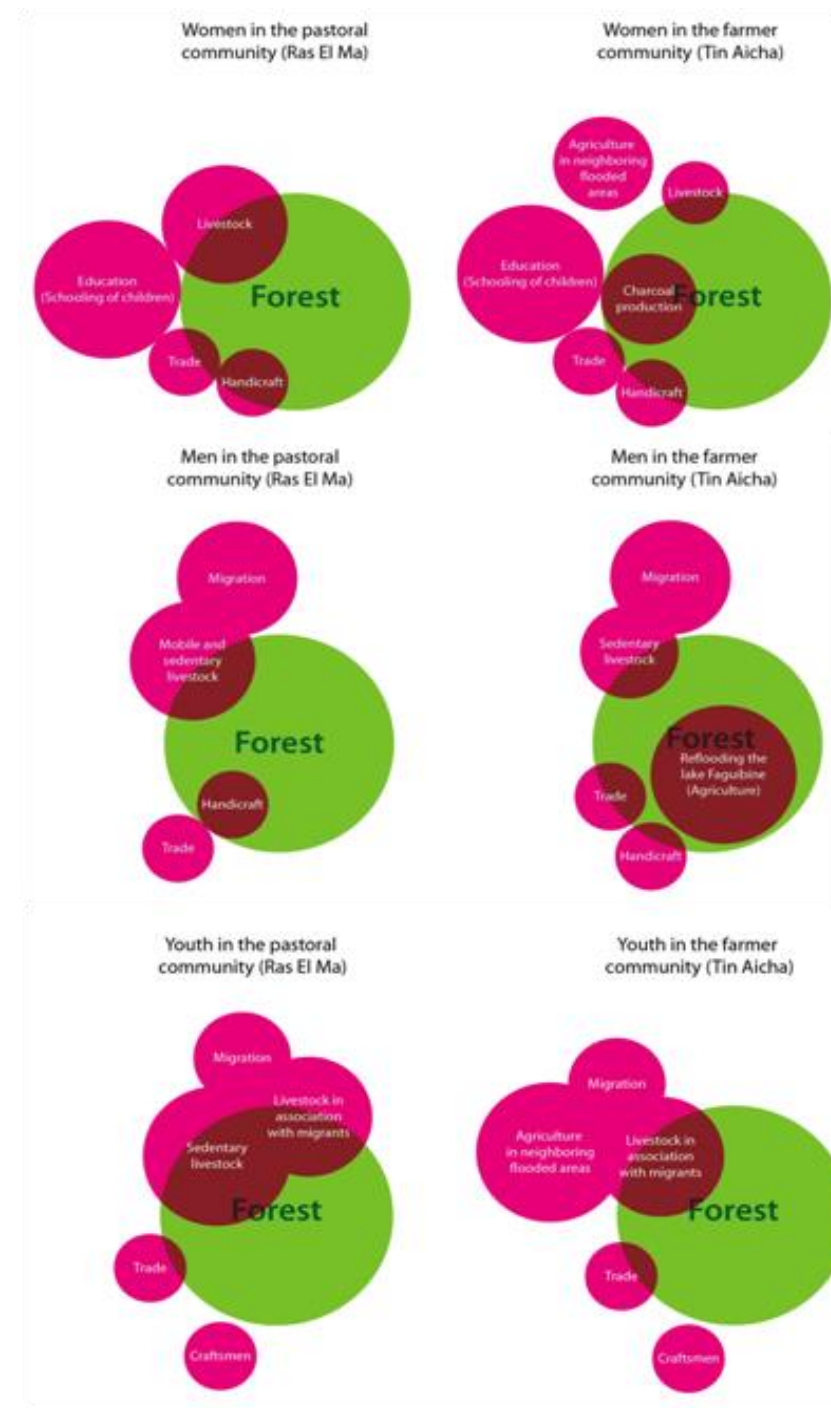
### Is Adaptation Gender neutral?

1. Adaptive strategies are highly gendered: Migration as an important strategy for men but not for women (Figure 2). Women ranked migration as a factor increasing their vulnerability
2. Women are affected by the climate related events, but also have to adapt to the migration of men.

### Conclusion

Ignoring the already existing high women's vulnerability, their specific perceptions and visions in national and local projects and plans, will hinder a successful, transformative societal adaptation.

Article: Djoudi, H., Brockhaus, M. and Locatelli, B., 2013. Once there was a lake: vulnerability to environmental changes in northern Mali. *Regional Environmental Change*, 13(3), pp.493-508.



**Figure 2:** Adaptive strategies and their dependency on forest, developed by women and men during the PRA workshops. (Size indicates the ranked importance. Overlap indicates the degree to which they depend on forest)