

# Risk Assessment activities at the DRMKC

*Ainara Casajus Valles*

October 2019, Bonn - Germany

# OBJECTIVE

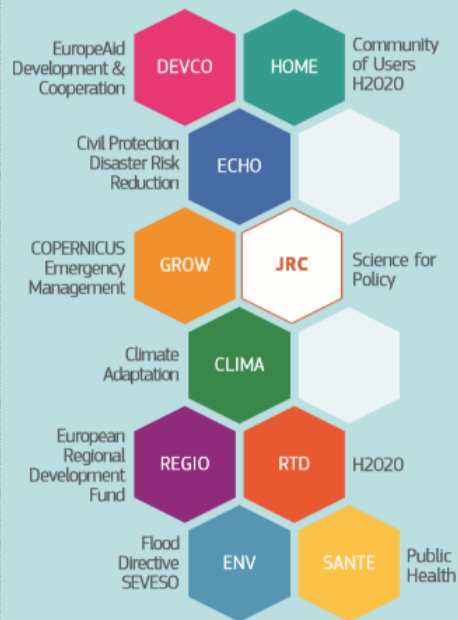
Present the support that science provides in risk assessments at the DRMKC:

- INFORM
- Science for DRM series
- Recommendations for NRA for DRM in EU
- Risk Data Hub

# DRMKC PROVIDES A **NETWORK APPROACH** TO THE **SCIENCE POLICY INTERFACE** IN DISASTER RISK MANAGEMENT

## OUR ROLE

### EC DIRECTORATES



### DRMKC



PARTNERSHIP

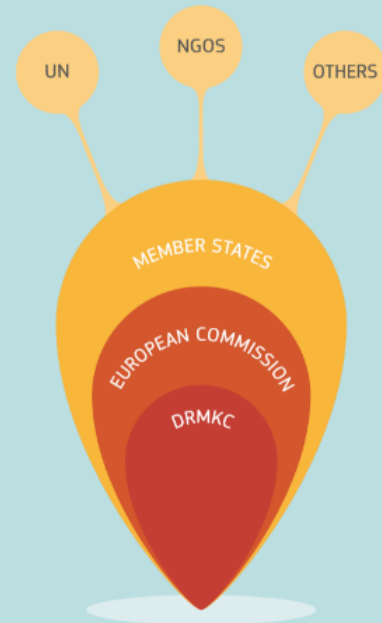


KNOWLEDGE

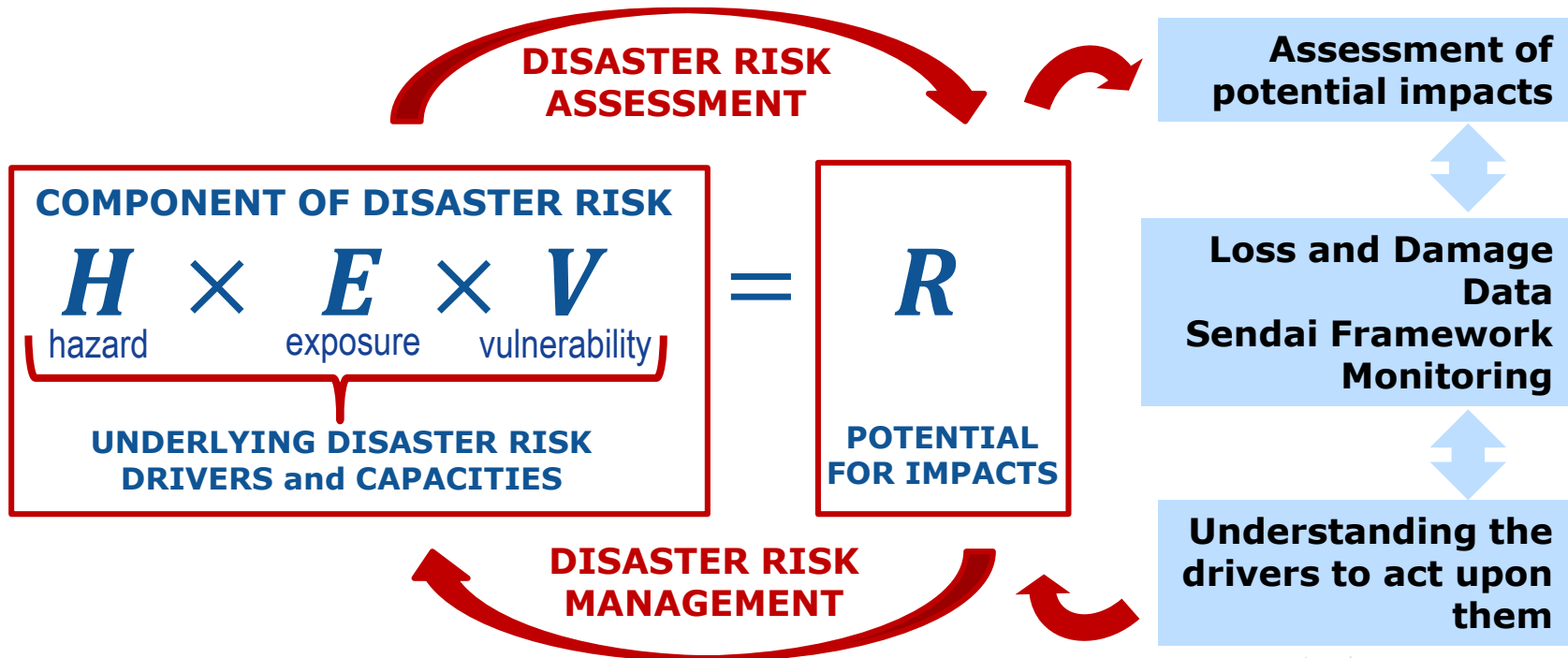


INNOVATION

### SERVING

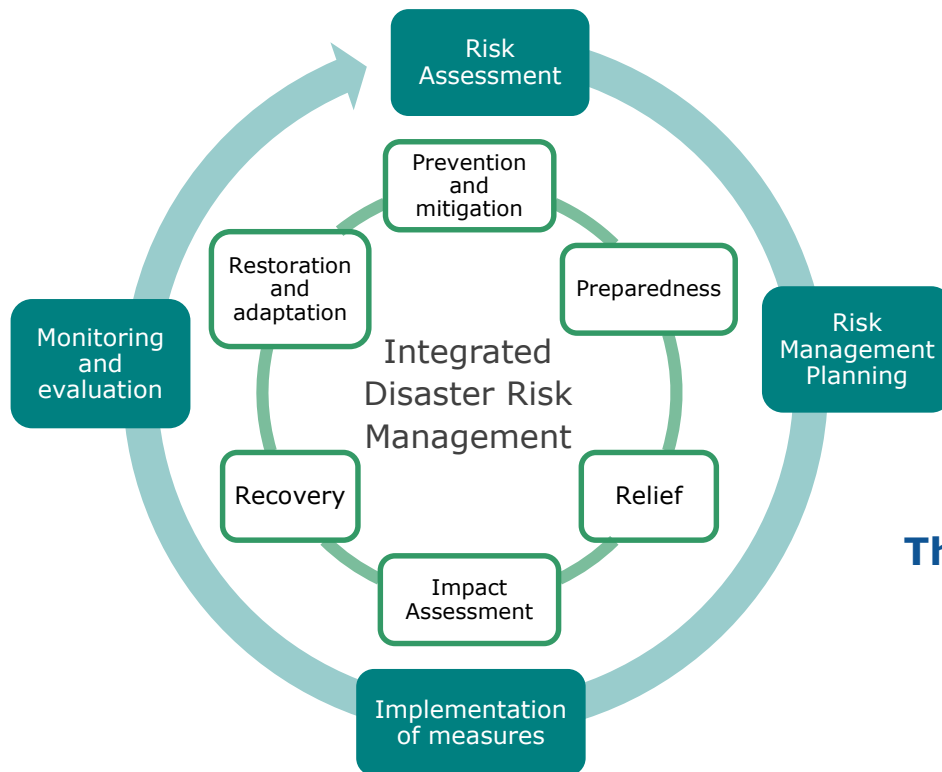


# Risk Assessment meets Risk Management



# NRA for reducing disaster risk

Risk Assessment as an input for planning measures to prevent risk, but also for raising awareness, informing land use, updating Early Warning systems, etc.



Monitoring and evaluation of measures implemented improves the next NRA round.

Requires involvement of all the sectors and many stakeholders

**The outcomes of the RA should be useful for decision-making**

# NRAs as a tool for prevention and preparedness



## New Union Civil Protection Mechanism

Decision No 1313/2013/EU  
Decision (EU) 2019/420

To strengthen the **cooperation** between the Union and the Member States and to facilitate **coordination** in the field of civil protection

Member States to develop **risk assessments** at national or subnational level and make available to the Commission a summary of the relevant elements every 3 years

'Risk assessment' as the overall cross-sectoral process of risk identification, risk analysis, and risk evaluation undertaken at national or appropriate sub-national level;

Decision No 1313/2013/EU

# Capability assessment as a tool for prevention and preparedness



## New Union Civil Protection Mechanism

Decision No 1313/2013/EU  
Decision (EU) 2019/420

Make available to the Commission the assessment of their **risk management capability** at every three years.

*Risk Management Capability* as the ability of a Member State or its regions to reduce, adapt to or mitigate risks, identified in its risk assessments to levels that are acceptable in that Member State.

Commission Notice Risk Management Capability Assessment Guidelines (2015/C 261/03)

Guidelines assess the technical, administrative and financial capabilities for: risk assessments, risk management planning, and implementing prevention and preparedness measures.

# Science for DRM series



## Science for Disaster Risk Management 2017

Knowing more and losing less

### On Risk Assessment:

- More **collaboration** is needed across sectors and stakeholders to jointly create evidence-based narratives.
- More tools for **prioritizing** and for **risk mapping** to help policymakers to develop disaster risk reduction frameworks

**SCIENCE** *for* **DRM** **2020**

Acting today, protecting tomorrow





# NRAs as a tool for prevention and preparedness

## A challenge for Member States

- Governance frameworks within Europe
- Level of information available
- Past experiences
  - Dynamic nature of risk
  - Emerging risks
  - Scope
  - Data, information and knowledge
  - Quantitative approaches



**Overview of  
natural and man-  
made risks  
European Union  
may face**

SWD (2017) 176 final  
SWD (2014) 134 final

# Recommendations for NRA for DRM in EU

Direct contribution of 9 research groups from JRC:

- Droughts
- Earthquakes
- Floods
- Biological disasters
- Terrorist attacks
- Nuclear Accidents
- Critical Infrastructures
- Chemical Accidents
- Natech

Scientific support to NRA reporting

Scientific community

Towards more coherent and consistent RA methodologies **to make risks arising from different hazards comparable**

To understand the **relative importance** of different risks for a given region

In order to assist decision makers in DRM in their **prioritising of DRM planning and actions**

Decision makers in DRM:

- Ministries
- Civil Protection Groups

Now developing Version 1 with new risks and integrating the vision of users

# Risk Data Hub

## Develop. of EU approach to systematically record and manage Disaster Loss Data

JRC leads an EU process with MS to develop solutions for measuring disaster losses



Recording Disaster Losses (July 2013)



Current status and best practices (Nov. 2014)



Guidance for Disaster Loss Data Recording (Apr. 2015)



Disaster Damage and Loss Data for Policy (Dec. 2017)



Loss database architecture for DRM (Dec. 2017)



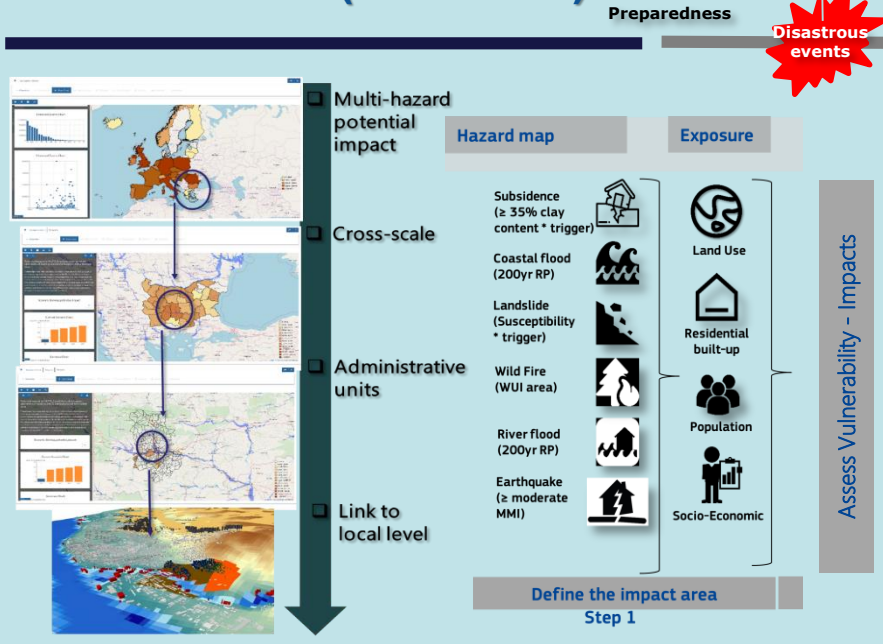
Risk Data Hub

Development of guidelines...

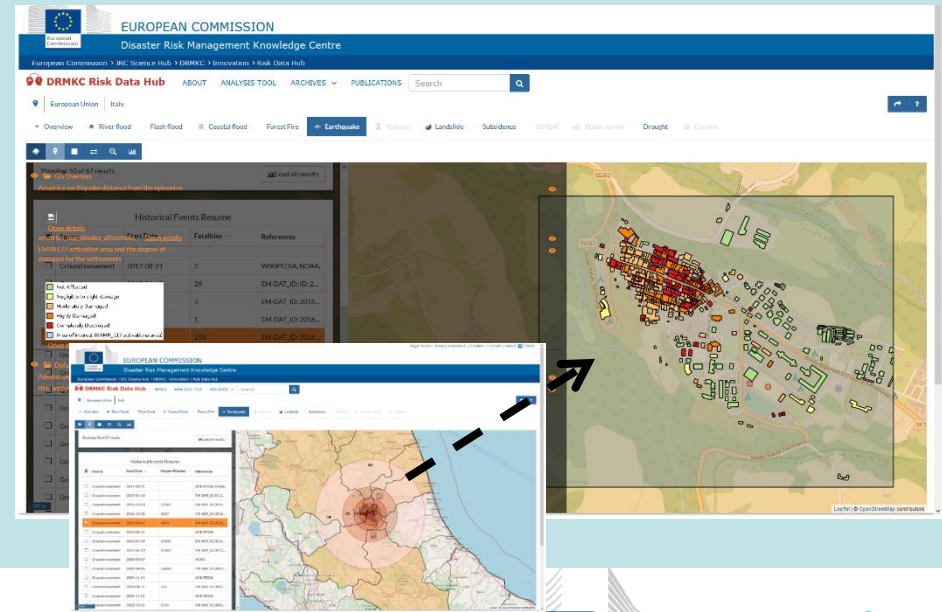
...Support to Member states (DRMKC Support Service)...

# Risk Data Hub

## 1. Assessments (Prevention)



## 2. L&D/Lessons learned (Recovery)



# INFORM



It is a tool to **identify** countries or areas of countries at risk from **humanitarian emergencies** that could overwhelm national response capacity and lead to a need for international assistance

- ❑ Composite indicator
- ❑ User driven model
- ❑ Collaborative process

## INFORM Steering Group



## INFORM Partners



# INFORM

INDEX FOR RISK MANAGEMENT

...to assess the **risk of humanitarian crisis and disaster**

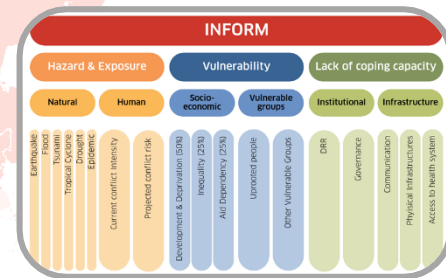
**RANKING**

COUNTRY	RANK	INFORM RISK	3 YR TREND	HAZARD & EXPOSURE	3 YR TREND	VULNERABILITY	3 YR TREND	HAZARD & EXPOSURE	3 YR TREND	VULNERABILITY	3 YR TREND	HAZARD & EXPOSURE	3 YR TREND		
Afghanistan	3	7.9	→	8.6	→	5.5	10.0	7.2	→	6.9	7.4	8.0	→	7.4	8.5
Albania	111	2.9	→	3.0	→	5.1	0.3	1.7	→	2.3	1.0	4.8	→	6.2	3.1
Algeria	37	4.8	→	6.3	→	3.6	8.0	3.5	→	3.3	3.6	4.8	→	4.9	4.9
Anaoka	62	4.2	→	2.3	→	2.0	2.6	4.6	→	4.5	4.7	5.1	→	6.6	7.5
Antigua and Barbuda	144	2.3	→	2.0	→	3.7	0.0	1.7	→	2.0	1.3	3.5	→	4.7	2.1
Argentina	138	2.4	→	2.4	→	3.1	1.7	1.5	→	1.9	1.1	3.7	→	3.0	2.1
Armenia	100	3.2	→	2.1	→	3.8	0.1	3.0	→	2.4	3.6	5.0	→	6.6	2.7
Australia	144	2.3	→	3.4	→	5.7	0.1	1.7	→	0.5	3.7	2.1	→	2.2	1.9
Austria	167	1.7	→	1.3	→	2.3	0.1	2.3	→	0.8	3.1	1.7	→	2.2	1.2
Azerbaijan	80	3.6	→	2.3	→	3.8	0.5	4.4	→	1.9	6.5	5.0	→	6.5	7.9
Bahamas	154	2.0	→	1.7	→	3.2	0.0	1.6	→	2.3	0.5	3.0	→	3.1	2.8
Bahrain	188	0.8	→	0.1	→	0.1	0.1	1.6	→	1.9	1.2	3.0	→	4.2	1.7

RANKING

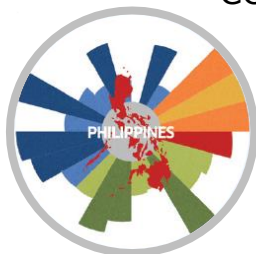
RISK MAP

GLOBAL  
OPEN  
RELIABLE  
OBJECTIVE  
FLEXIBLE

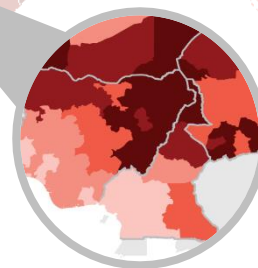
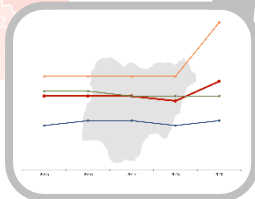


COUNTRY PROFILES

SUBNATIONAL



RISK TRENDS





# Any questions?

You can find me at [Ainara.CASAJUS-VALLES@ec.europa.eu](mailto:Ainara.CASAJUS-VALLES@ec.europa.eu)