

# Measuring and Reducing Air Pollution Health Impacts

Informal Technical Expert Meeting on Tools and Methodologies for Assessing the Impacts of the Implementation of Response Measures. UNFCCC.

May 18, 2021



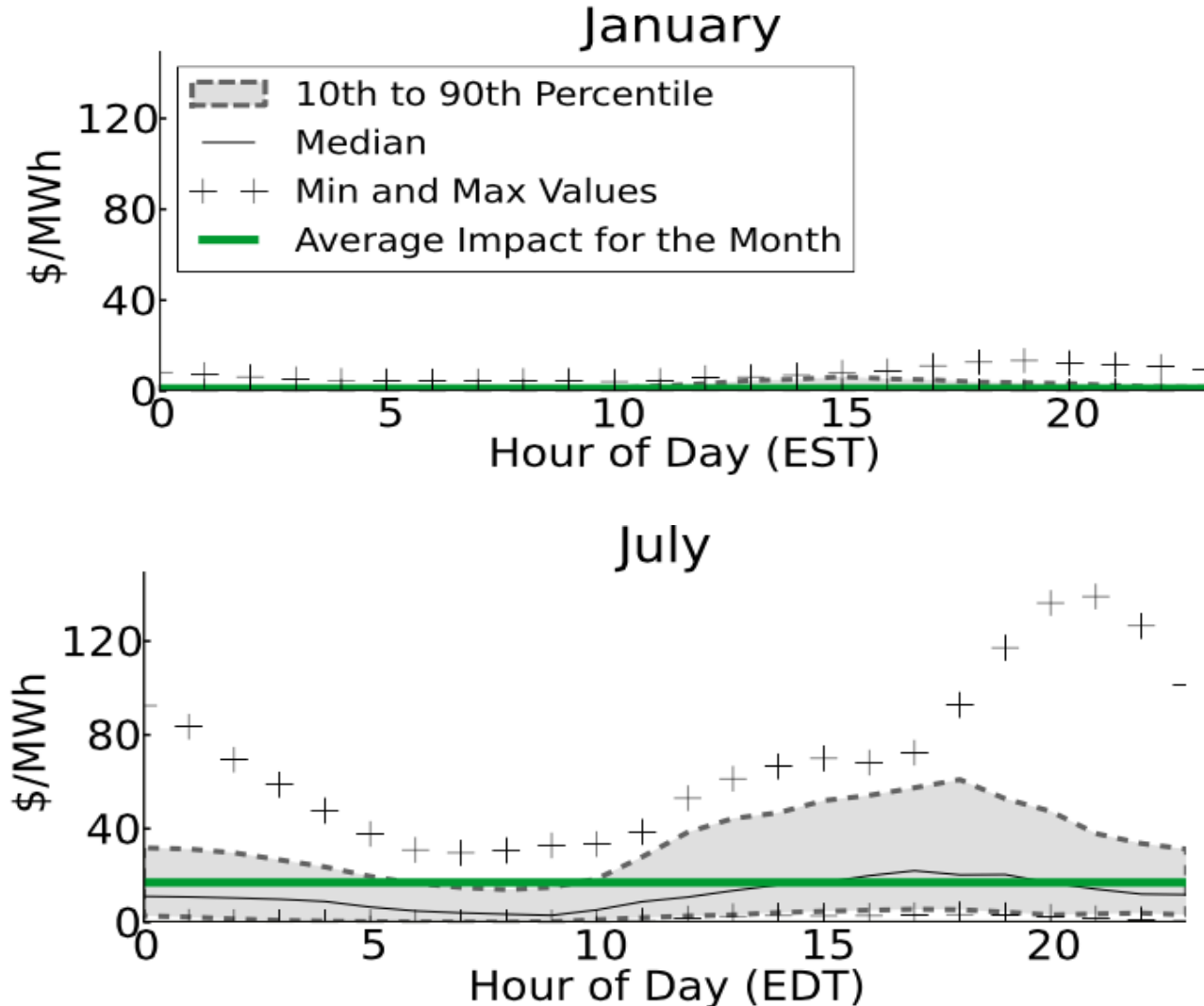
Valerie M. Thomas.

Anderson-Interface Chair of Natural Systems

School of Industrial and Systems Engineering, and School of Public Policy

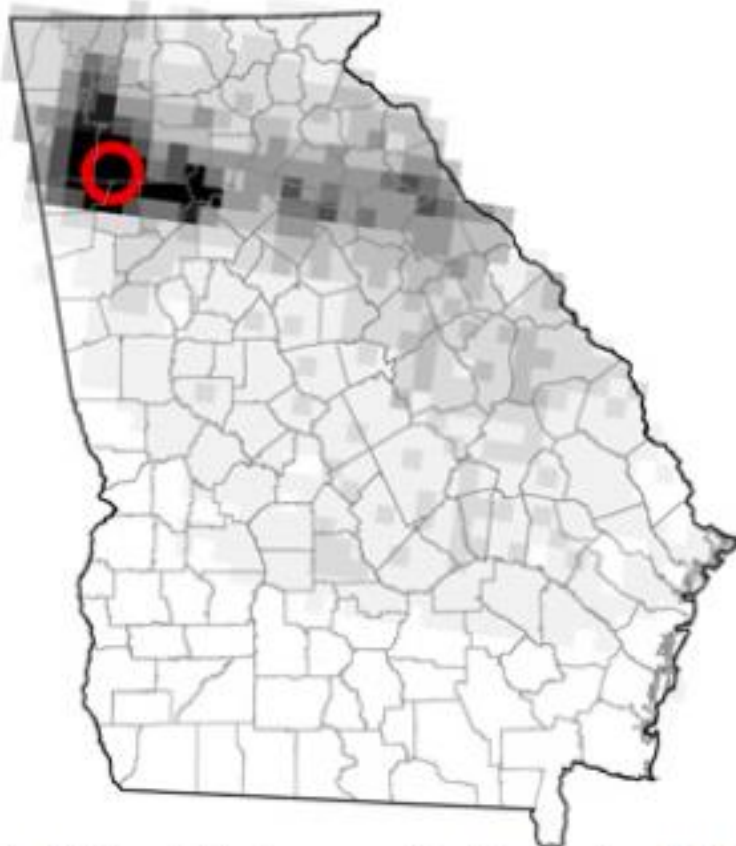
[valerie.Thomas@isye.gatech.edu](mailto:valerie.Thomas@isye.gatech.edu)

# Plant Bowen Health impact \$/MWh

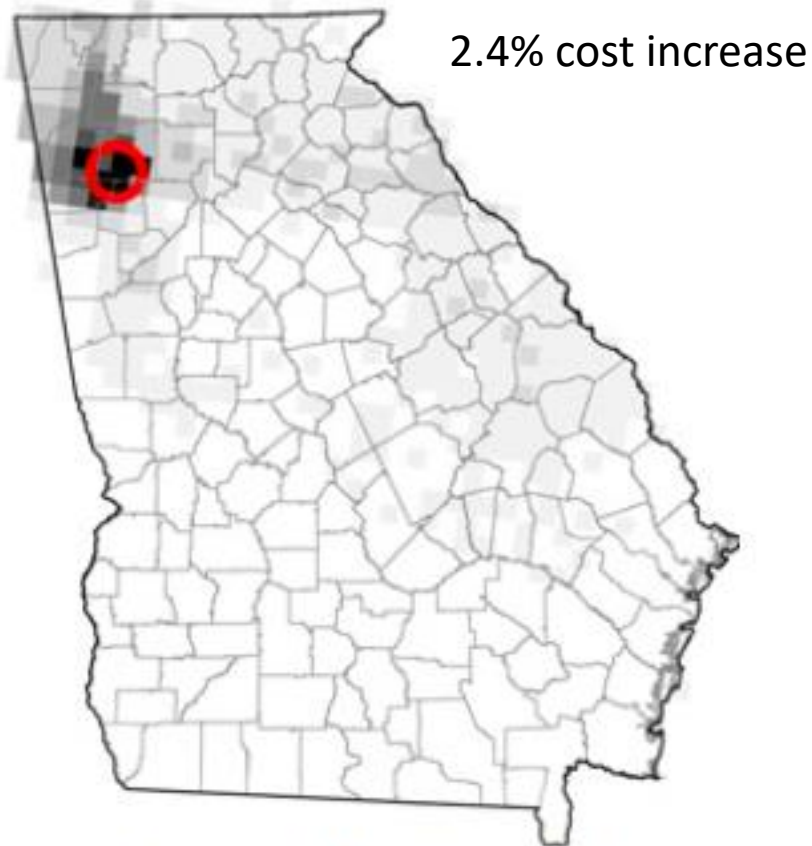


Plant Bowen, near Atlanta, 2007. Impacts from secondary PM 2.5 formation.

# Minimizing production costs



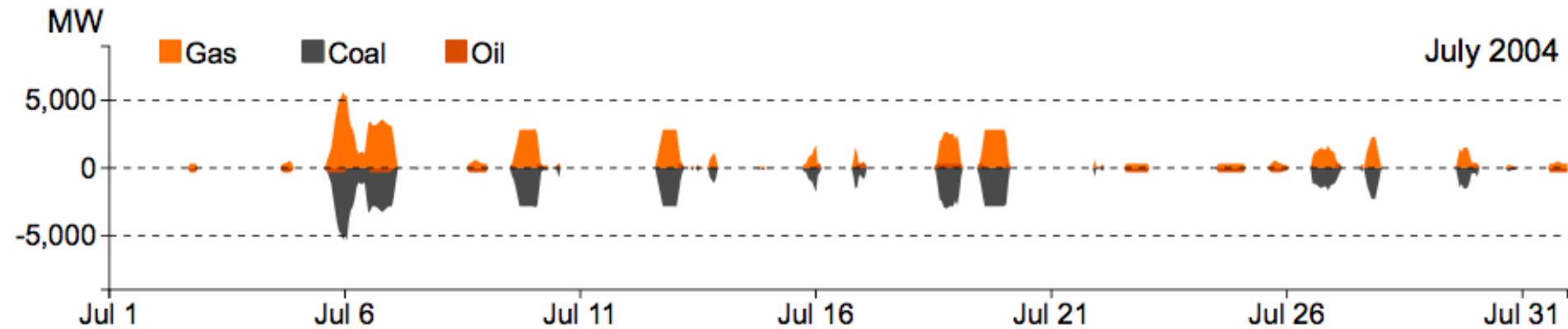
# Minimizing production and health costs



**Total Health Impacts Due to PM<sub>2.5</sub> From Plant Bowen (\$ / Month / Person)**

A horizontal scale bar with tick marks at 0, 5, 10, 15, and 20+. The bar is shaded from light to dark gray, corresponding to the grayscale shading on the maps.

# Changes in fuel use to minimize generation plus health costs



Hourly difference in fuel use in the scenario minimizing both production cost and monetized health impacts and the scenario minimizing production cost. Kerl et al. 2015

[https://mediaspace.gatech.edu/media/bowen\\_load\\_profile\\_July\\_4-11\\_07.mp4/1\\_7byicwv6](https://mediaspace.gatech.edu/media/bowen_load_profile_July_4-11_07.mp4/1_7byicwv6)

# Thank you!

Paul Kerl, Wenxian Zhang, Juan Moreno-Cruz,  
Thanos Nenes, Matthew Realff, Ted Russell, Joel  
Sokol

