



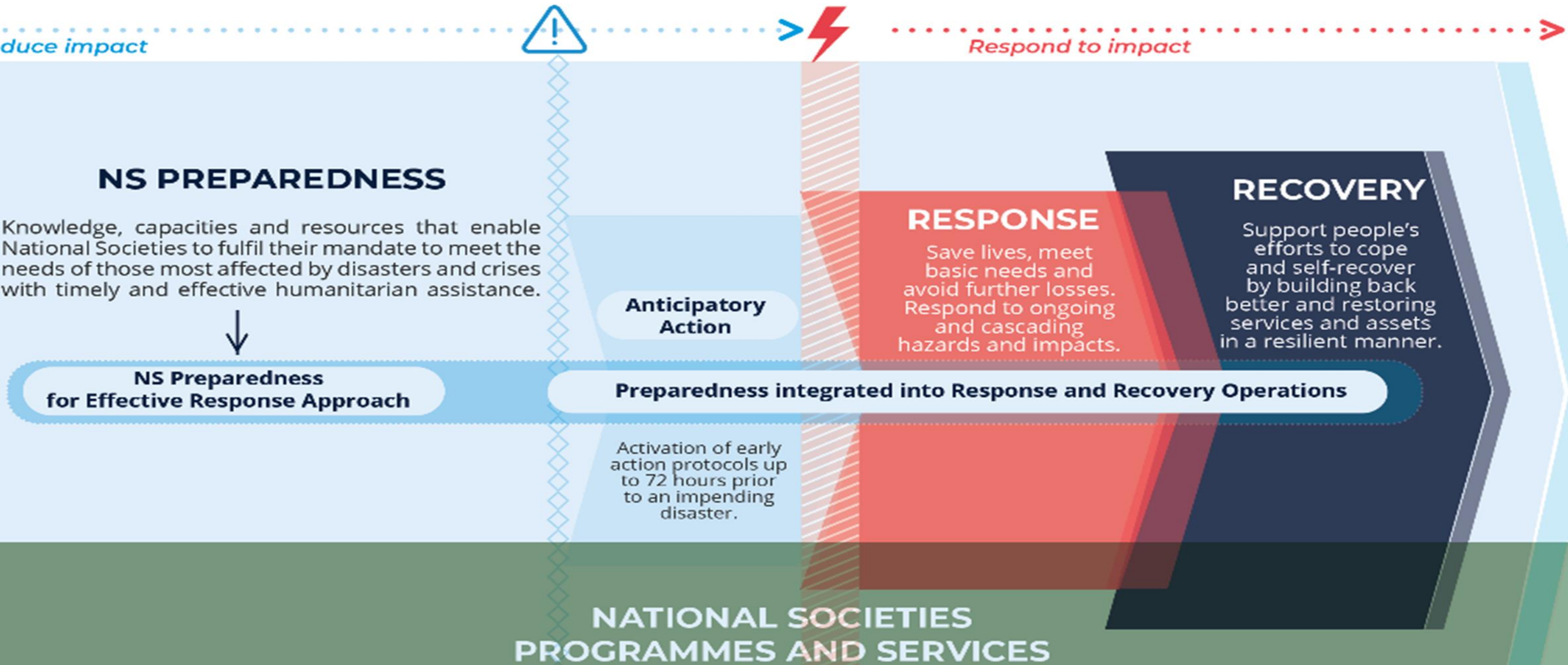
Post Impact Support: nature, scale, modalities and limitation

International Federation of Red Cross and Red Crescent Societies

Mary Friel, Senior Climate Policy, IFRC

Meeting of the Transitional Committee
on Loss & Damage
Luxor, March 2023

When do we act



Impacts of the climate crisis and how we address impacts

POTENTIAL **NEGATIVE** IMPACTS ON PEOPLE



Reduced Water and Food Quality and Supply



Loss of Lives



Loss of Income and Property



Damage to Human Health



Displacement

WHAT WE DO TO **PREVENT AND RESPOND** TO THESE IMPACTS



Public Awareness



Mental Health



Advocating for the Most Vulnerable



Shelter



Disaster Preparedness and Response



Community Level Skills and Resources



Improving Laws and Policy



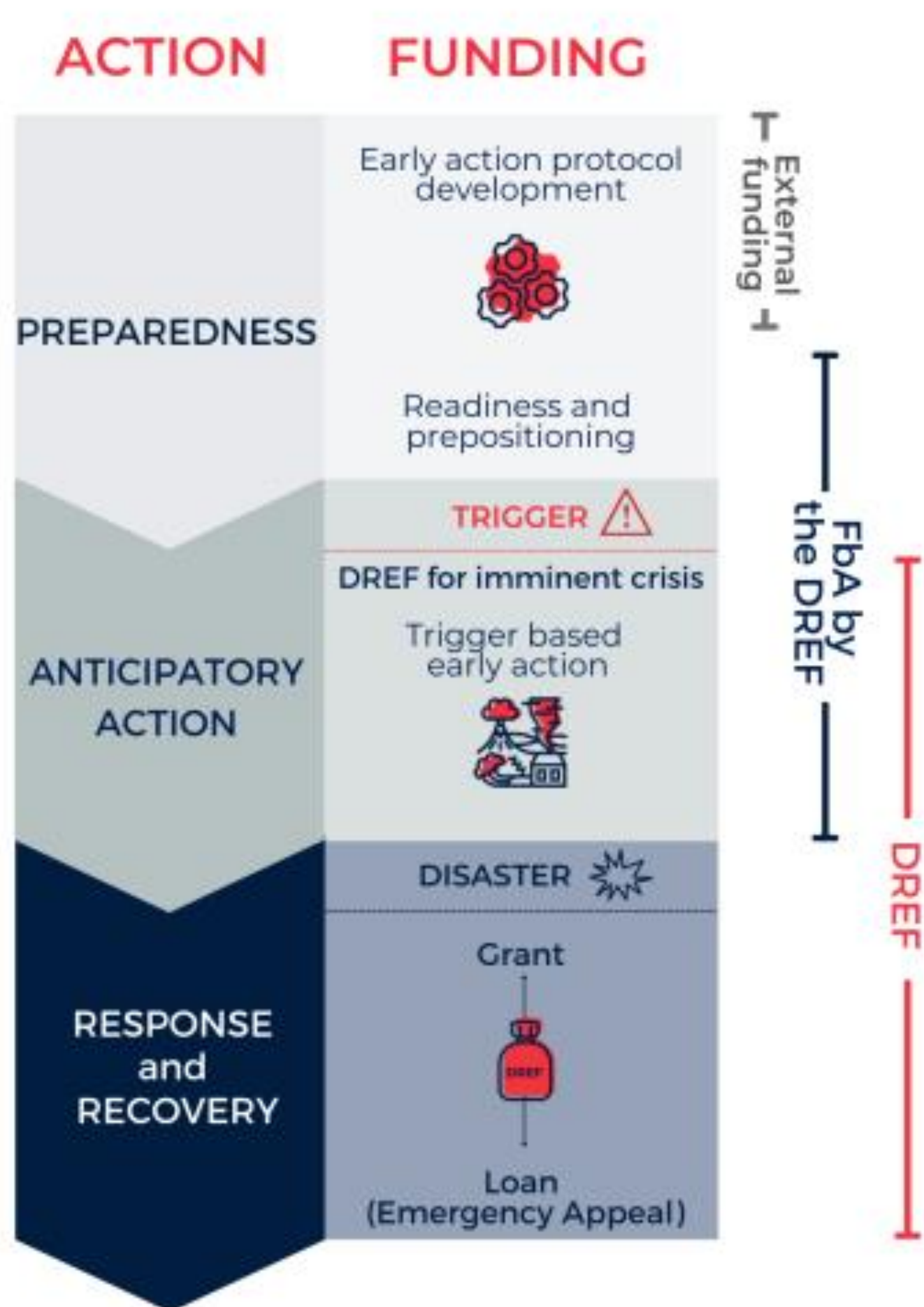
Early Warning and Forecast-Based Action



Water, Sanitation and Hygiene Promotion



Income Loss Assistance



How does IFRC crisis response funding work?



Disaster Response emergency fund (DREF)

▪ Types of allocations

- Grants to cover the costs of smaller-scale operations.
- Start-up funding (loan) for response to large-scale disasters for which an emergency appeal has or will be launched
- Forecast based action: When an event that could lead to a disaster is imminent, which can be predicted in days or at the most in weeks, such as cyclones, evolving floods

• **Speed:** Available within 12-24 hours from receipt of request

• **Amount:** up to 1 million CHF

• **Duration** – Short term, typically 3-9 month operation

Emergency appeal:

• **What is it:** Plan developed for an emergency situation, where there are significant needs for which international assistance is required.

• **Scale of needs:** Usually for medium to large scale disasters and crises of budget beyond DREF threshold

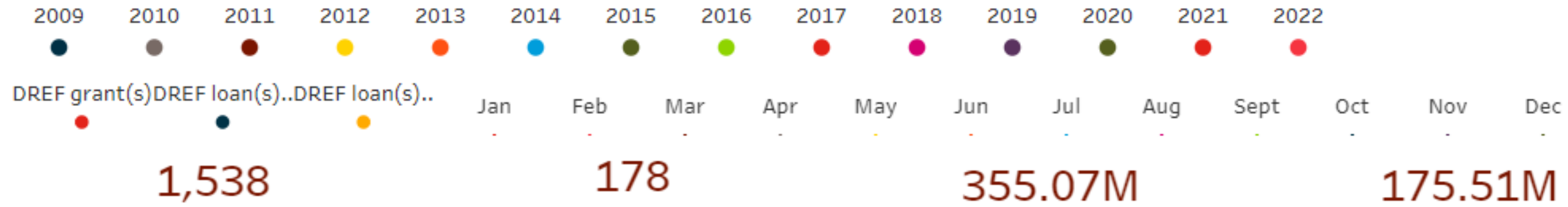
• **Scope:** Relief and recovery, also includes capacity development, preparedness and risk reduction

• **Duration:** usually 6 to 24 months – longer for larger scale.

Where is the DREF responding?



Overview of Emergency Operations Supported by DREF

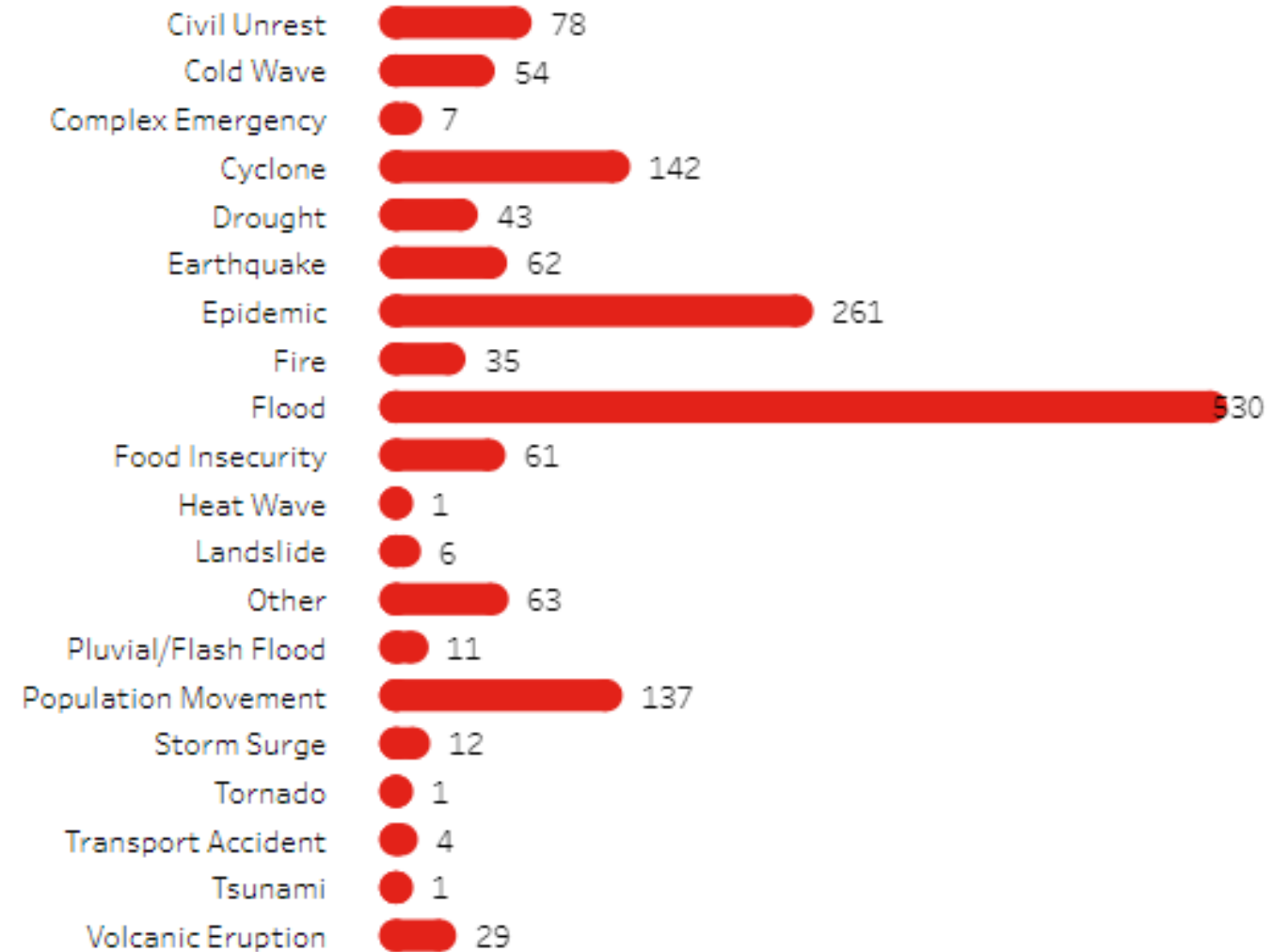
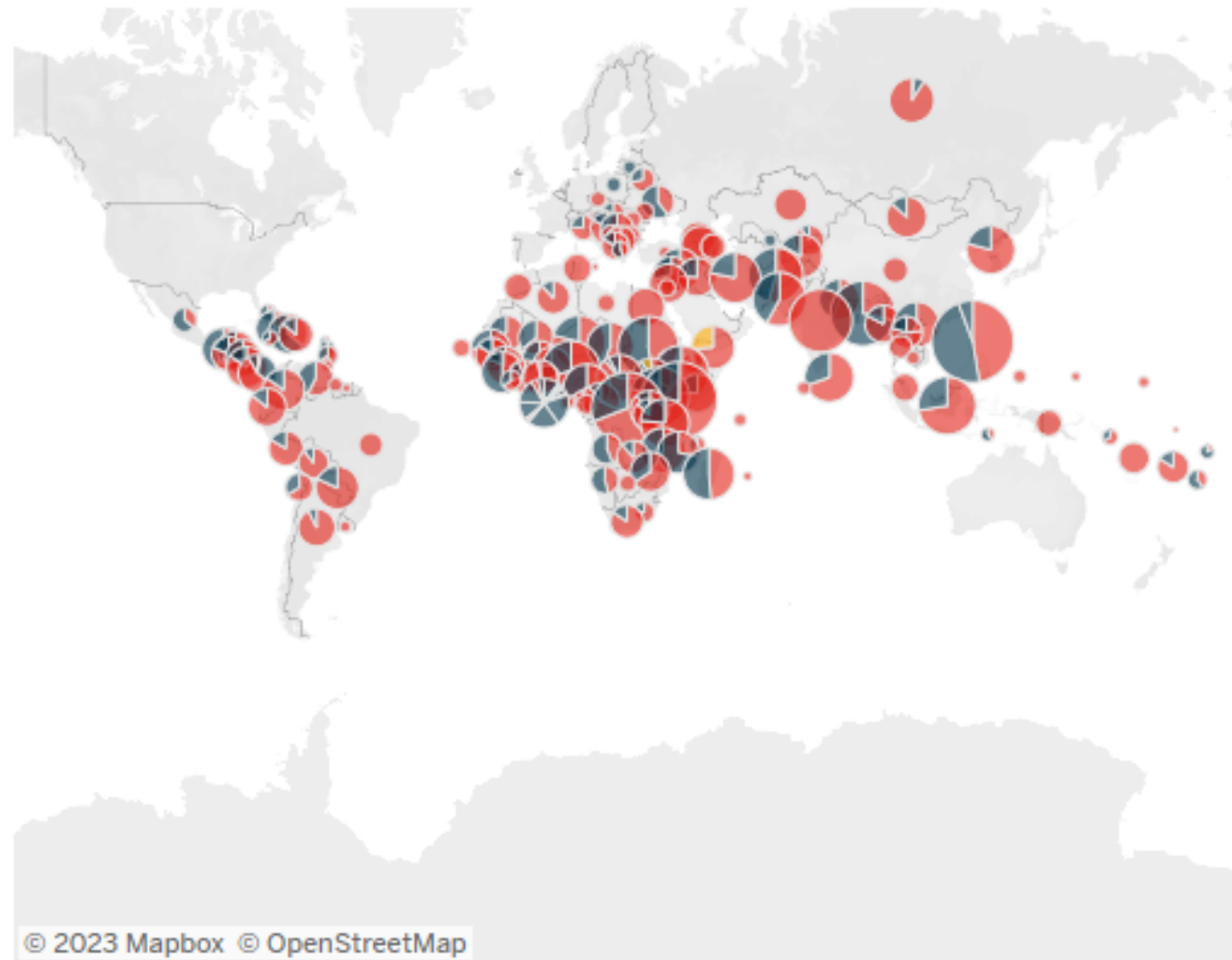


Emergency Operations Supported by DREF in 2009, 2010, 2011 and 11 more

Countries with DREF Operations in 2009, 2010, 2011 and 11 more

DREF Allocations (CHF) in 2009, 2010, 2011 and 11 more

People Targeted through DREF Operations in 2009, 2010, 2011 and 11 more



Anticipatory action: Triggers and early action



- FbF Practitioners Manual
- Set the trigger guidance
- Trigger database
- Early action database

