

GEF Presentation to the First meeting of the Transitional Committee (TC1) | UNFCCC

by
Rawleston Moore
March 27, 2023



GLOBAL ENVIRONMENT FACILITY
INVESTING IN OUR PLANET

www.theGEF.org

Framing Questions

1. What is your organization doing to provide support for addressing L&D (and post-impact support)?
2. What are the triggers that unlock your support, including for the phasing of this support?
3. What is the scale of the support you provide and for what types of interventions and actions

Support for L&D Relevant Themes in GEF Portfolio

Thematic Areas	GEF Support
Slow Onset Events	Glacial Lake Outbursts, Land Degradation and Biodiversity Projects (GEF Trust Fund and multi-trust fund opportunities), Sea Level Rise Projects
Non-Economic Losses	Ecosystem Services, Ecosystem based adaptation
Comprehensive Risk Management	Disaster risk reduction, risk management, Insurance
Human Mobility, Migration	Community level engagements, income generation initiatives to enhance viability of livelihoods
Action and Support	Capacity building, finance throughout GEF Trust Fund and LDCF/SCCF portfolio

Project Examples with L&D Relevant Benefits

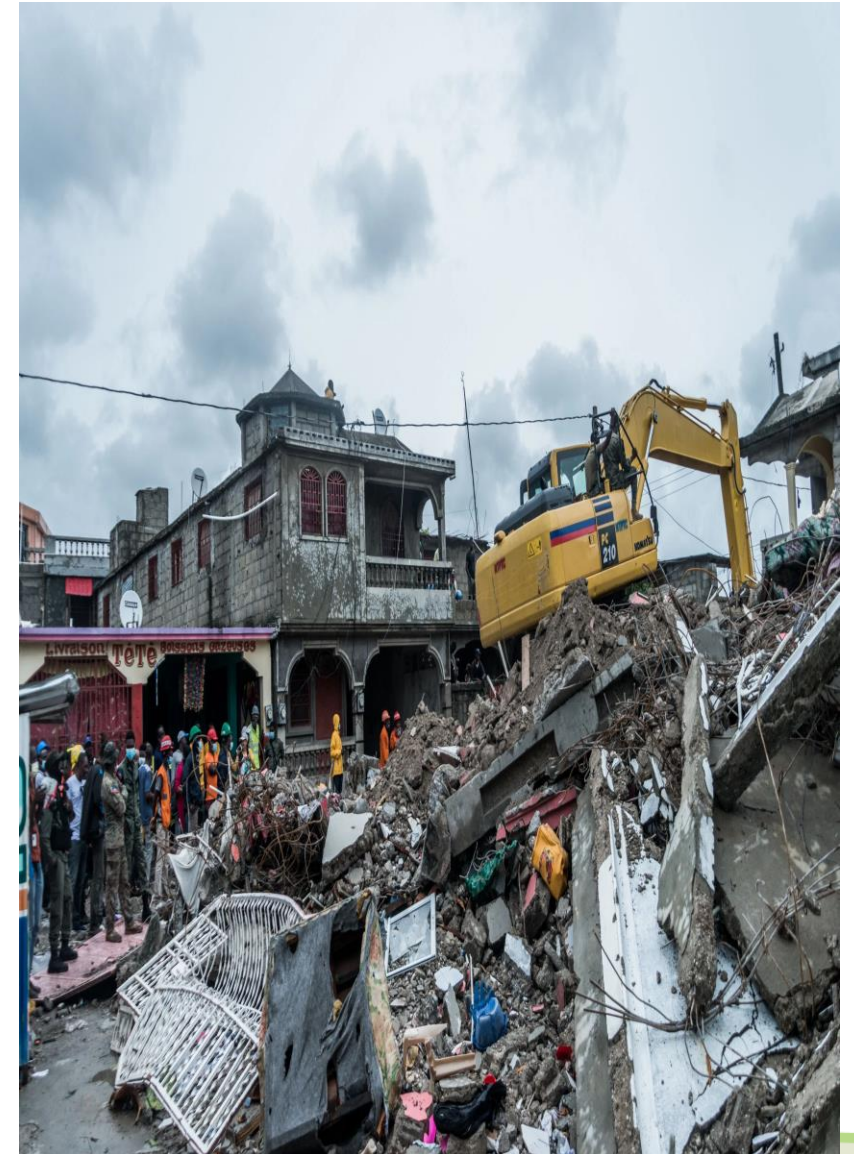
Thematic Areas	GEF Project Example
Slow Onset Events	Nepal-Community Based Flood and Glacial Lake Outburst Risk Reduction, \$6.3million (UNDP)
Non-Economic Losses	Securing Kiribati's Natural Heritage: Protected areas for community, atoll, and island climate resilience (Securing Kiribati), \$11 million (IUCN)
Comprehensive Risk Management	African Climate Risk Insurance Facility-Derisking Adaptation to Climate Change in Africa, \$8.9 million (AfDB)
Human Mobility, Migration	Increasing Productivity and Adaptive Capacity in Mountain Areas of Morocco (IPAC-MAM), \$6.5 million
Action and Support	V20 Funding Program to Leverage Adaptation by Averting and Minimizing Impacts of Climate Change, \$4.9 million (UNIDO)

Haiti Emergency Project

- To support the country's emergency responses to the Port au Prince Earthquake in 2010 by providing autonomous energy and lighting using solar applications
- Facilitated through Inter-American Development Bank and World Bank
- Approved in 1 day as was an emergency project
- GEF acted quickly and responded effectively



GLOBAL ENVIRONMENT FACILITY
INVESTING IN OUR PLANET



Triggers for GEF Support

- ✓ **Country-driven process for access**, based on request from countries, working with GEF Agencies
- ✓ Countries can engage in **upstream consultations and planning** with GEF secretariat and agencies, with support
- ✓ **Predictability** of access for each country through LDCF and SCCF (see next slide), and GEF Trust Fund STAR (allocation system)
- ✓ **Leave no LDCs behind** under LDCF: each and every LDC successfully accessed LDCF in GEF-7, with over 99% utilization of national allocations

Scale of Support

Programming Strategy for adaptation for GEF-8 (July 2022 to June 2026)

- **LDCF:**
 - Scenario A: US\$1 billion, Scenario B: \$1.3 billion
 - **\$20 million for each LDC**
- **SCCF:**
 - Window A for SIDS
 - Scenario A: \$ 0.1 billion, Scenario B: \$0.2 billion
 - **\$3-\$6.5 million for each SIDS**
 - Window B for innovation and technology transfer
 - Scenario A: \$0.1 billion, Scenario B: \$0.2 billion

GEF Trust Fund for GEF-8

- \$5.33 billion total
- \$1.919 billion for biodiversity, \$0.852 billion for climate mitigation, and \$0.618 for land degradation
- Full flexibility in country allocations



GLOBAL ENVIRONMENT FACILITY
INVESTING IN OUR PLANET

www.theGEF.org