



Nature-based solutions for cooling and greening

Cool Buildings for All

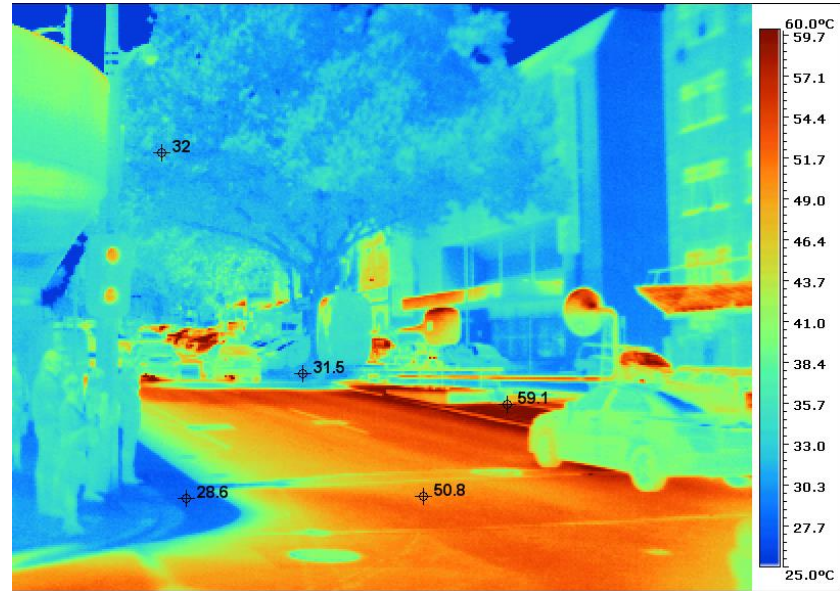
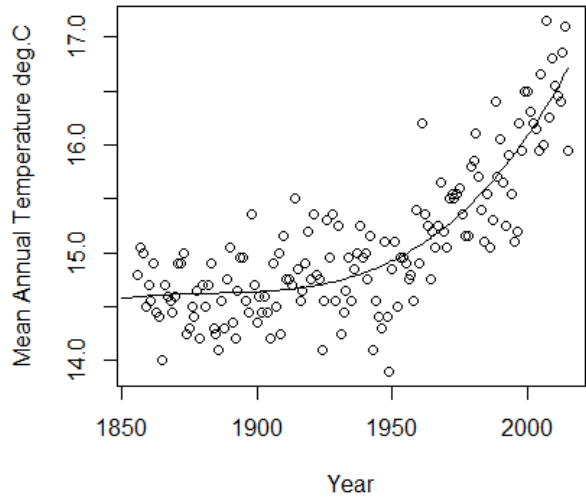
30 September 2020

Presenter: David Callow



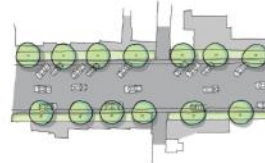
CITY OF MELBOURNE

URBAN FOREST STRATEGY – 40% TREE CANOPY COVER BY 2040

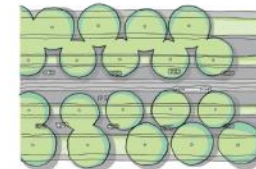


TREE CANOPY COVER

22% (2012)



40% (2040)



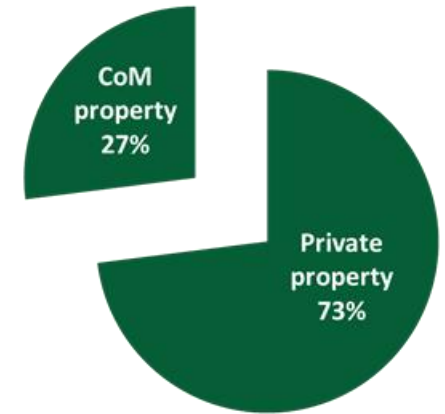
GREENING ACROSS JURISDICTIONS



City of Melbourne 1988
Population: 39,512
Green cover: 24.6%



City of Melbourne 2009
Population: 94,341
Green cover: 13.6%





Sustainable Building Design Planning Controls



Melbourne Green Factor Tool

The Green Factor Tool is an online interface (greenfactor.com.au) for designers to input information about their proposed development—such as vegetation type and numbers, soil depth, trees retained, accessibility—and receive a Green Factor score.

$$\text{Green Factor score} = \frac{\text{weighted area of greening}}{\text{total site area}}$$

