

**BONN
CLIMATE CHANGE
CONFERENCE
JUNE 2023**

**SBSTA mandated event:
Progress in the development of
the reporting tools for the
electronic reporting of common
reporting tables and common
tabular formats under the ETF**

Vlad Trusca, Manager, Transparency Division

6 June 2023, Bonn



United Nations
Climate Change

#Together4Transparency

Requested SBSTA to develop, pursuant to the MPGs:

- **common reporting tables (CRT)** for the electronic reporting of info on **GHG emissions**
- **common tabular formats (CTFs)** for the electronic reporting of info on **tracking progress in achieving NDCs** and of info on **financial, technology development/transfer and capacity-building (FTC) support**

Decision 18/CMA.1

Adopted:

- **CRT** for the electronic reporting of the info in the national inventory reports of **GHG emissions**
- **CTF** for the electronic reporting of the info on **tracking progress in achieving NDCs**
- **CTF** for the electronic reporting of the info on **FTC support**

Decision 5/CMA.3

Requested the secretariat to:

- Develop the **reporting tools**, taking into account the **flexibility** provisions
- Make available a **test version by June 2023** and a **final version of the tools by June 2024** (*timely availability of sufficient financial resources*)
- **Inform Parties** on the progress at SBSTA sessions
- Organize **regular technical training workshops**
- **Prepare a report** on how the inputs of Parties on the test version have been considered
- Facilitate **interoperability** with the **IPCC inventory software** and invite IPCC to engage in the work incl. by completing a **mapping exercise** between 2006 IPCC GLs and CRT
- Establish an **interactive web portal by Dec. 2025** to facilitate the availability of FTC support info

Decision 5/CMA.3

Implementation approach – IT project



United Nations
Climate Change Secretariat





- Parties **submit the mandatory information and data in the formats agreed** - comprehensive analysis, comparison, and assessment of progress - **feed info into the GST and NDC cycles**
- Complex IT project covering the development of **3 new reporting tools built** using a common framework:
 - **ETF GHG Inventory Reporting Tool** = CRT (Common Reporting Tables for GHG emissions)
 - **ETF Progress Reporting Tool** = CTF NDC (Common Tabular Format for tracking progress in achieving NDC)
 - **ETF Support Reporting Tool** = CTF FTC (Common Tabular Format on finance, tech. and CB support)
- UNFCCC institutional **knowledge and experience** (CRF Reporter, BR CTF, etc.) & **Parties/experts views**
- New tools require **additional skills, expertise and coordination**, apart from solving countless technical aspects
- **Complexity:**
 - All Parties, incl. ~150 developing countries; 3,000+ users
 - Online/offline; flexibility provisions
 - Interoperability with IPCC software
 - **Timing & Funding**



ETF reporting tools - meeting all requirements from Parties - advanced functionalities & a compliance platform working in both developed and developing countries **by building on:**

- **Totally new technical framework** designed for reliability, security, and durability
- **Open standards and open-source technologies** viable on long-term like HTML, JavaScript and .NET.
- **Native Azure cloud platform** providing enterprise grade information security, scalability, and resiliency
- Intuitive, accessible, discoverable **User Interface design** using UN Disability Inclusion Strategy
- Progressive web apps (PWAs) **working in offline mode** (operate in absence of an internet connection) and automatically synchronise data when connection is restored
- Real-time collaborative editing - **multiple users within a Party can work concurrently** on the same submission and see live changes to the data

Elevated level of complexity - dependencies among the modular building blocks

IT architecture - **interconnected and inter-dependent technical engines:**

- **Rendering engine**: render and input data, providing an accessible, user friendly, streamlined interface
- **Validation engine**: validation services (defined by metadata) in browser and server-side
- **Calculation engine**: data calculation services (defined by metadata) in browser and server-side
- **Metadata engine**: dynamically structure and validate data following a metadata schema (CMA decisions)
- **Import/export engine**: import/export data drafts across client and server, including a compatibility layer with the IPCC Inventory software
- **Reporting engine**: generate the agreed reporting tables in Excel based on the data entered
- **Storage engine**: offline structured storage for applications using browser Web Storage facilities

User management and authentication **reuse standard UNFCCC services**



- Mandate (decision 5/CMA.3) – UNFCCC cooperates with IPCC **to facilitate interoperability between the ETF reporting tools and the IPCC inventory software**
 - Some Parties **use IPCC Inventory Software to estimate GHG emissions** following 2006 IPCC Guidelines
 - Produce a **file that could be read and imported** by the ETF GHG Inventory Reporting Tool
- **Current work:**
 - Continuing the development of the **IPCC Inventory Software** and **ETF GHG Inventory Reporting Tool**
 - **Cell-by-cell mapping** between IPCC Inventory Software and ETF GHG Inventory Reporting Tool
 - **Generate JSON file in the IPCC Inventory Software** for importing it to ETF GHG Inventory Reporting Tool
- **Multiple releases of IPCC Inventory Software are expected before COP28, and to June 2024**

Progress and Timeline



United Nations
Climate Change Secretariat

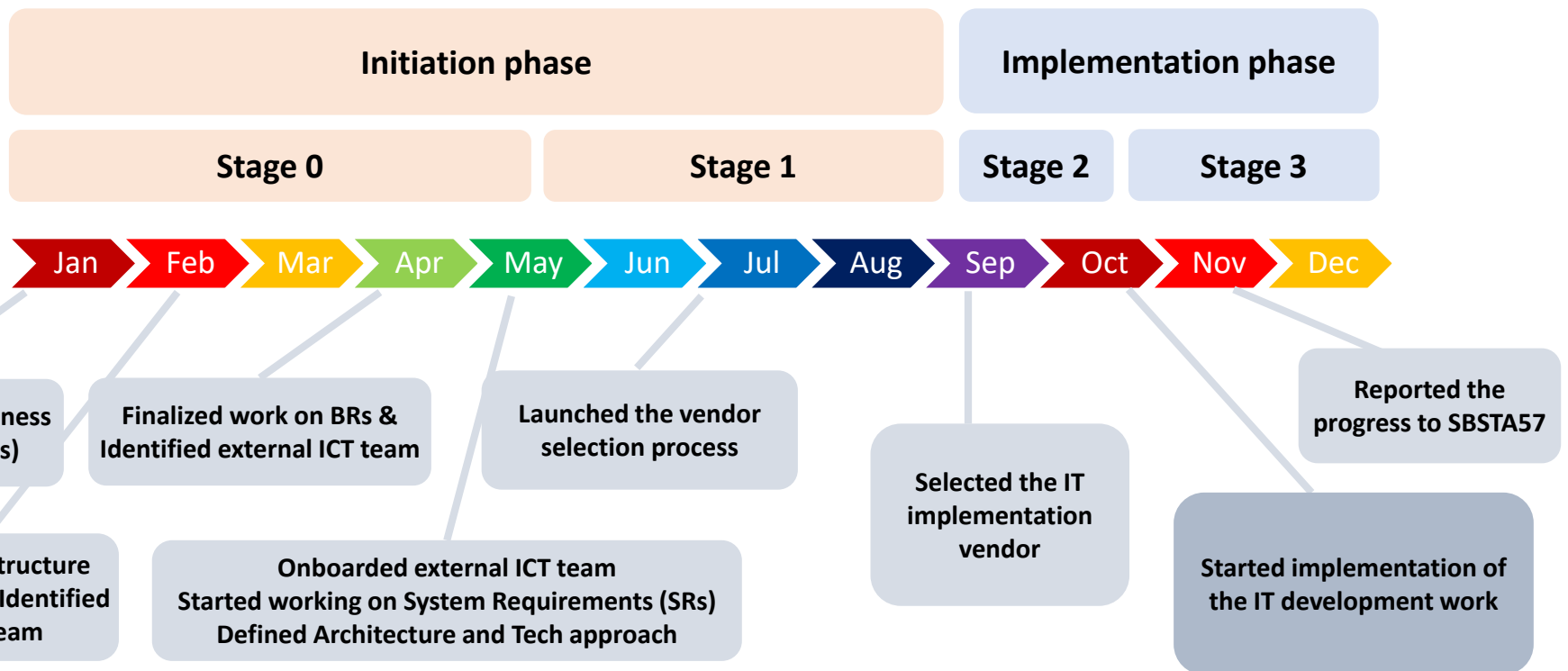


Timeline



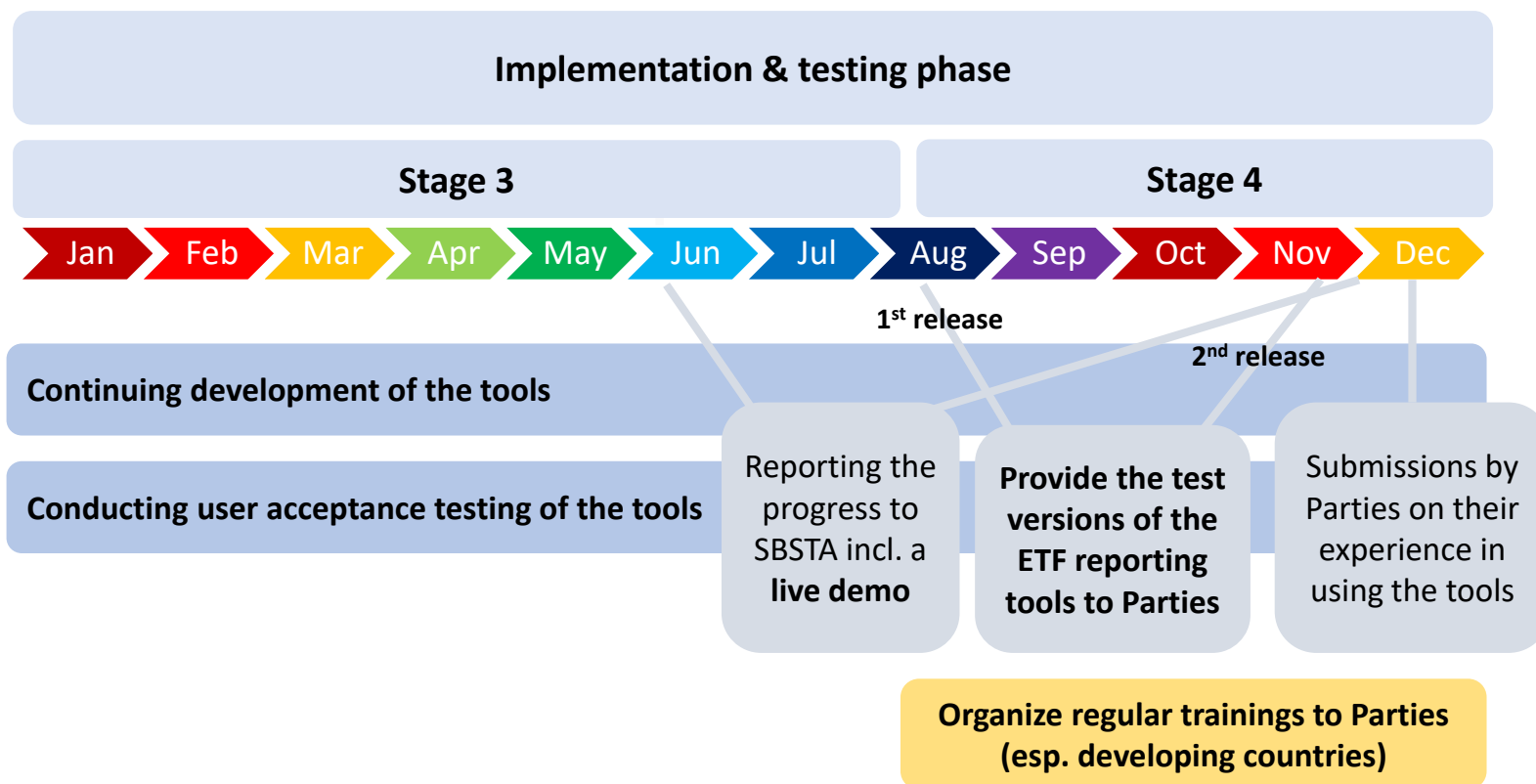
United Nations
Climate Change Secretariat

2022



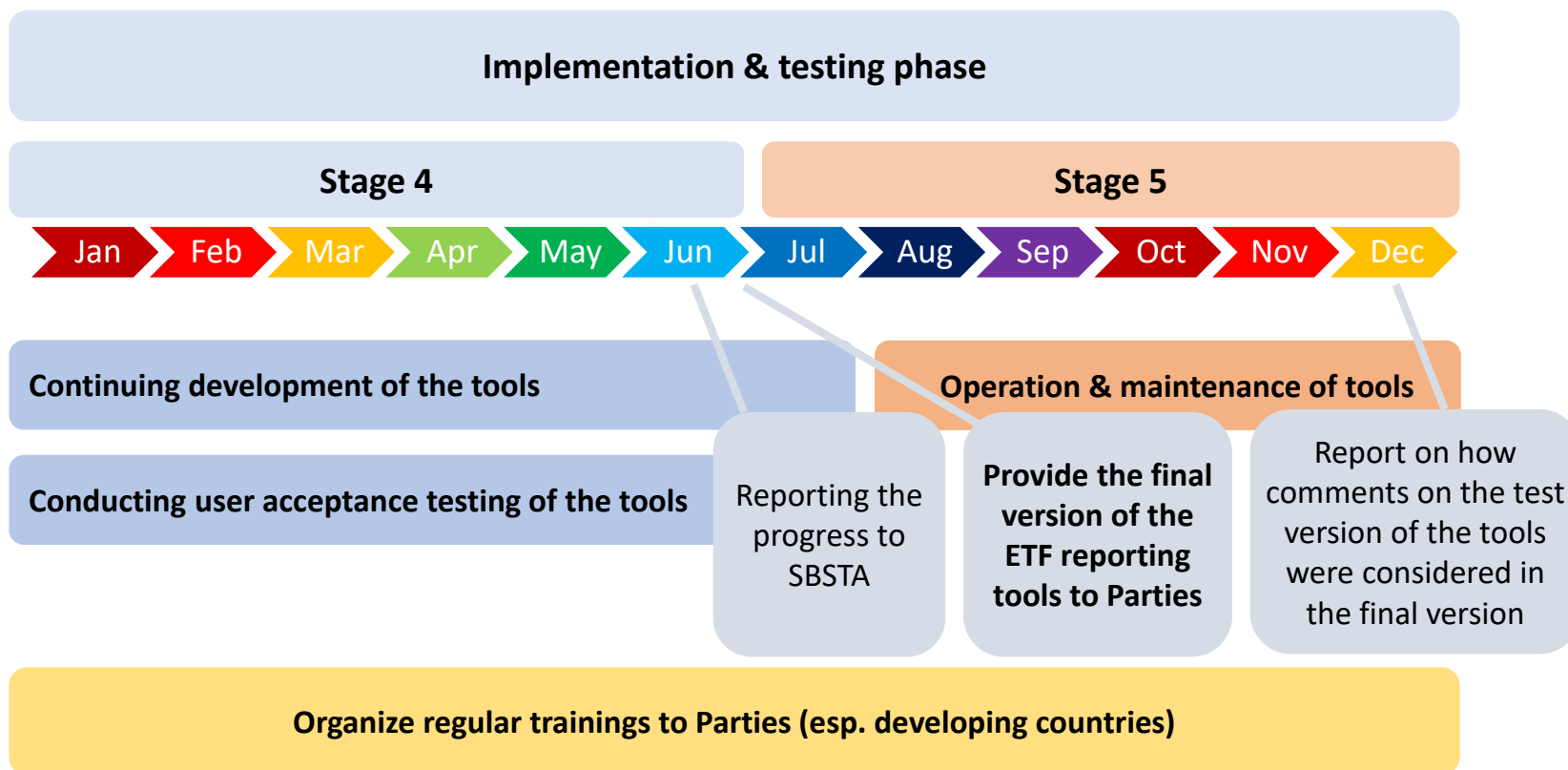


2023





2024



ETF Tools – preview

**Live demo event
14 June, 1-2 pm.
Room Nairobi**



United Nations
Climate Change Secretariat



User Interface - ETF reporting tools

Please select one of the ETF reporting tools

ETF | GHG INVENTORY

Reporting tool

Information in the national inventory reports of anthropogenic emissions by sources and removals by sinks of greenhouse gases (Decision 18/CMA.1, Annex I)

Enter >



ETF | PROGRESS

Reporting tool

Enter >



ETF | SUPPORT

Reporting tool

Enter >

User Interface – GHG Inventory

ETF | GHG INVENTORY

Inventories | Data entry | Reporting tables | QA/QC

ESP-CRT-2024-V1.84 | © DEFAULT VERSION | STATUS: STARTED | SYNCHRONIZED

Inventories

The list below contains all inventory versions and their status.

[+ Create Version](#) [Import .json file](#)

Year Status

Year	Version name	Status	Version	Created date	Updated	
2024	ESP-CRT-2024-v1.84	Started	© DEFAULT	2023-06-01	-	Open
2027	ESP-CRT-2027-v0.9	Started	-	2023-06-01	-	Open
2027	ESP-CRT-2027-v0.8	Started	-	2023-05-31	-	Open
2027	ESP-CRT-2027-v0.7	Started	-	2023-05-29	-	Open
2027	ESP-CRT-2027-v0.6	Started	-	2023-05-29	-	Open

© Last version submitted
ISO-CRT-2024-V1.0
[Open >](#)

© Last version submitted
ISO-CRT-2023-V1.0
[Open >](#)

online

User Interface – GHG Inventory

ETF | GHG INVENTORY
Inventories | **Data entry** | Reporting tables | QA/QC
☰ 👤

ESP-CRT-2024-V1.84 | © DEFAULT VERSION | STATUS: STARTED | 🔄 SYNCHRONIZED

📁 Navigation tree ⋮ Options

Sectors/Totals

- ▾ 1. Energy
 - > 1.A. Fuel combustion activities (sectoral approach)
 - > 1.A(b). CO₂ from fuel combustion activities (reference approach)
 - > 1.A(c). Comparison of CO₂ emissions from fuel combustion
 - > 1.A(d). Feedstocks, reductants and other non-energy use of fuels
 - > 1.B. Fugitive emissions from fuels
 - > 1.C. CO₂ transport and storage
 - > 1.D. Memo items
- > 2. Industrial processes and product use
- ▾ 3. Agriculture

1.A.3. Transport

Expand all
👁 Show/hide years
📄 Export
⚙️ ?

ID	Description	Unit	1990	1991	1992	1993
01	▾ Fuel consumption	TJ				
02	Liquid fuels	TJ				
03	Solid fuels	TJ				
04	Gaseous fuels	TJ				
05	Other fossil fuels	TJ				
06	Biomass	TJ				
07	▾ Calorific value					
08	Liquid fuels					
09	Solid fuels					
10	Gaseous fuels					
11	Other fossil fuels					

onLine ●

User Interface – GHG Inventory

ETF | GHG INVENTORY | Inventories | Data entry | **Reporting tables** | QA/QC

ESP-CRT-2024-V1.84 | © DEFAULT VERSION | STATUS: STARTED | SYNCHRONIZED

Common reporting tables

Download reporting tables based on filter criteria.

Filter by

Years: 1990, 1...

Sectors, summary and cross-cutting tables: Energy, Waste

Tables: Table1, Table1.A(a)s1, Table1.A(a)s2, Table1.A(a)s3, Tabl...

Please

- All Tables
- Energy
 - Sectoral summary tables
 - Table1
 - Background tables - 1A - Sectoral approach
 - Table1.A(a)s1
 - Table1.A(a)s2
 - Table1.A(a)s3

online

User Interface - ETF reporting tools

Please select one of the ETF reporting tools



ETF | GHG INVENTORY
Reporting tool

Enter >

ETF | PROGRESS
Reporting tool

Information necessary to track progress
made in implementing and achieving
nationally determined contributions
(Decision 18/CMA.1, Annex II)

Enter > 



ETF | SUPPORT
Reporting tool

Enter >

User Interface - Progress

Please select an option to start working on a CTF version

Create blank version

Please select this option to create a new blank version and start working on it.

Start

Start from existing version

Please select this option if you would like to work on or make a copy of an existing version.

Start

Import a file

Please select this option if you want to start by uploading a JSON file.

Start

User Interface - Progress

Please select year and version type to start working on a CTF version

Select the submission year:

The submission year will be reflected in the version name.
You may edit the submission year later.

Year
2024 

Set as default version

Please select this option to make this the default working version for all users within your Party. You may change the default version later.

Default version 

Cancel

Create CTF Version >



User Interface - Progress



Version Settings

1 Flexibility

2 Projections

01 Flexibility provisions

Please specify if any flexibility provisions in light of national capacities will be used.

Yes No

Para 85 (emission reduction estimates for PaMs) ⓘ



Para 92 (reporting projections) ⓘ



Enter text...

Para 95 (use an earlier endpoint for projections) ⓘ




× Close Settings

Continue to next step >

User Interface - Progress



Version Settings

 Flexibility
Completed

 Projections

02 Projections

Specify additional projection scenarios included in the submission

Table 8 (with additional measures)



Table 9 (without measures)



Please specify the end year for projections


 

Please specify the interim year(s) for which projections are reported

 Close Settings

 Back

Continue to next step 

User Interface - ETF reporting tools

Please select one of the ETF reporting tools



ETF | GHG INVENTORY

Reporting tool

Enter >



ETF | PROGRESS

Reporting tool

Enter >

ETF | SUPPORT

Reporting tool

Information on financial, technology development and transfer and capacity-building support provided and mobilized, support needed and received (Decision 18/CMA.1, Annex III)

Enter >



User Interface - Support



ETF | SUPPORT

Please select an option to start working on a CTF version

Create blank version

Please select this option to create a new blank version and start working on it.

Start

Start from existing version

Please select this option if you would like to work on or make a copy of an existing version.

Start

Import a file

Please select this option if you want to start by uploading a JSON file.

Start

User Interface - Support



ETF | SUPPORT

Please select year and version type to start working on a CTF version

Select the submission year:

The submission year will be reflected in the version name.
You may edit the submission year later.

Year
2024 

Set as default version

Please select this option to make this the default working version for all users within your Party. You may change the default version later.

Default version 

Cancel

Create CTF Version >

User Interface - Support



ETF | SUPPORT

ESP-CTF-FTC-2024-V1.51 | © DEFAULT VERSION | STATUS: STARTED

Version Settings



1 Type of information

2 Support provided and mobilized

3 Settings for reporting amount

01 Type of information

Report Information on support provided and mobilized

Yes No

You are reporting as

Developed Country Party Other Party that provides support

Report information on support needed and received [?](#)




Yes No

× Close Settings

Continue to next step >

User Interface - Support

Version Settings

- 1  Type of information
Completed
- 2  Support provided and mobilized
- 3  Settings for reporting amount

2. Support provided and mobilized

02 Support provided and mobilized



Financial

Report information on financial support provided (bilateral, regional and other channels) using common tabular formats (Table III.1)

Report information on financial support provided (multilateral channels) using common tabular formats (Table III.2)

Report information on finance mobilized through public interventions using common tabular formats (Table III.3)

Years

2022 X 2021 X

[Close Settings](#)

[< Back](#)

[Continue to next step >](#)

Next Steps



United Nations
Climate Change Secretariat



Test version deployment



United Nations
Climate Change Secretariat

- By 1 July – **All Parties (NFP) receive instructions to nominate 3 users** - deadline 31 July
- 15 August – **deployment of the test version** of ETF tools & assign 3 users to each Party
- Sep-Nov – **hands-on trainings for experts** on using the new ETF reporting tools
- mid November – **second release of the test version** of ETF tools (to be presented at COP 28)
- **User support** – link to quick-start guide (screen shots, guidance, etc.) & email for user access problems
- Submission of views and feedback – officially **via the submission portal** by December 2023



GHG Inventory:

- Energy sector – all tables (12)
- Waste sector – all tables (5)

ETF Progress:

- Mitigation policies and measures, actions and plans – Table 5
- Information on projections of greenhouse gas emissions and removals:
 - Table 7 (with measures)
 - Table 8 (with additional measures)
 - Table 9 (without measures)
- Key underlying assumptions and parameters used for projections – Table 11

ETF Support:

- Financial support mobilized through public interventions – Table III.3
- Support needed: Financial – Table III.6
- Support received: Financial – Table III.7

Scope of the Test Version – Functionalities (incl. offline)



United Nations
Climate Change Secretariat

Prepare data set and data set version management (ONLY in online mode):

- Version settings, incl. flexibility (for selected tables)

Navigation tree (full navigation tree, ONLY scoped data entry grids will be rendered, country specific nodes)

Data entry grids fully functional:

- Data entry: numerical values; text values; NK values; documentation box; flexibility (only FX)

Export/Import:

- Excel for entering/modifying data (data entry grids)
- JSON for integration with IPCC software and national systems (data exchange .json for Energy sector)

Generation of reporting tables as per agreed format (in Excel) for included tables

Standard functions:

- Data validation
- Automatic calculation/aggregation of values
- Auto-save (local and on server)
- Auto-copy/complete in the GHG Inventory tool (NCV/GCV, method, EF)
- Versions management with no conflict resolution: only last version is saved

Trainings to be provided during Regional Climate Weeks:

- **Africa (ACW):** Nairobi, Kenya, 4-8 September
- **Middle East & North Africa (MENACW):** Riyadh, Saudi Arabia, 9-12 October
- **Latin America & the Caribbean (LACCW):** Panama City, Panama, 23-27 October
- **Asia-Pacific (APCW):** Johor, Malaysia, date TBC

Parties should **strive to send the Transparency experts to these events for hands-on training**

Considering other events for Sep-Nov 2023 (regional WS, meetings) & dedicated space at COP 28

Funding needed for dedicated training events in 2024



IT project - impacted by complexity, challenging deadlines and **limited financial resources**

Parties pledged their support in Glasgow – unfortunately, **we have not received sufficient funds**

Total requirements: around 12 million EUR (by June 2024)

- Jan. 2022 – May 2023: 3.5 mil. EUR – spent
- **Jul. 2023: 2 mil. EUR – urgently needed for preparing the test version**
- Sep. 2023: 3 mil. EUR – needed for the work until the end of 2023
- Jan. 2024: 3.5 mil. EUR – needed for developing the final version

Supplementary project for providing funding – SB 300-004 /# SB-014980/“Development of the information hub and related reporting and review systems and tools used under the ETF”



- **Continuing the IT development** of the back-end solution and UI/UX design
- **Continuing the work with IPCC** for finalizing the mapping between 2006 IPCC GLs and CRT and for the interoperability with IPCC Software
- Completing the **test version of the new reporting tools – release on 15 August**
- Preparing the organization of **technical training workshops**
- Initiating **preparatory work** on the new **ETF review tools and Data Warehouse** project
- Continuing to engage with Parties and donors for **providing sufficient resources** for completing the development of the tools and conducting training workshops

Thank you!



United Nations
Climate Change Secretariat