

**COP 27 EVENT**

# Enhancing capacities and networks for women's leadership in adaptation action

November 9, 2022  
Capacity Building Hub at COP27



# Moderator



**Angie Dazé**

Gender Equality and Social  
Inclusion Lead, Resilience  
International Institute for  
Sustainable Development  
NAP Global Network  
Secretariat



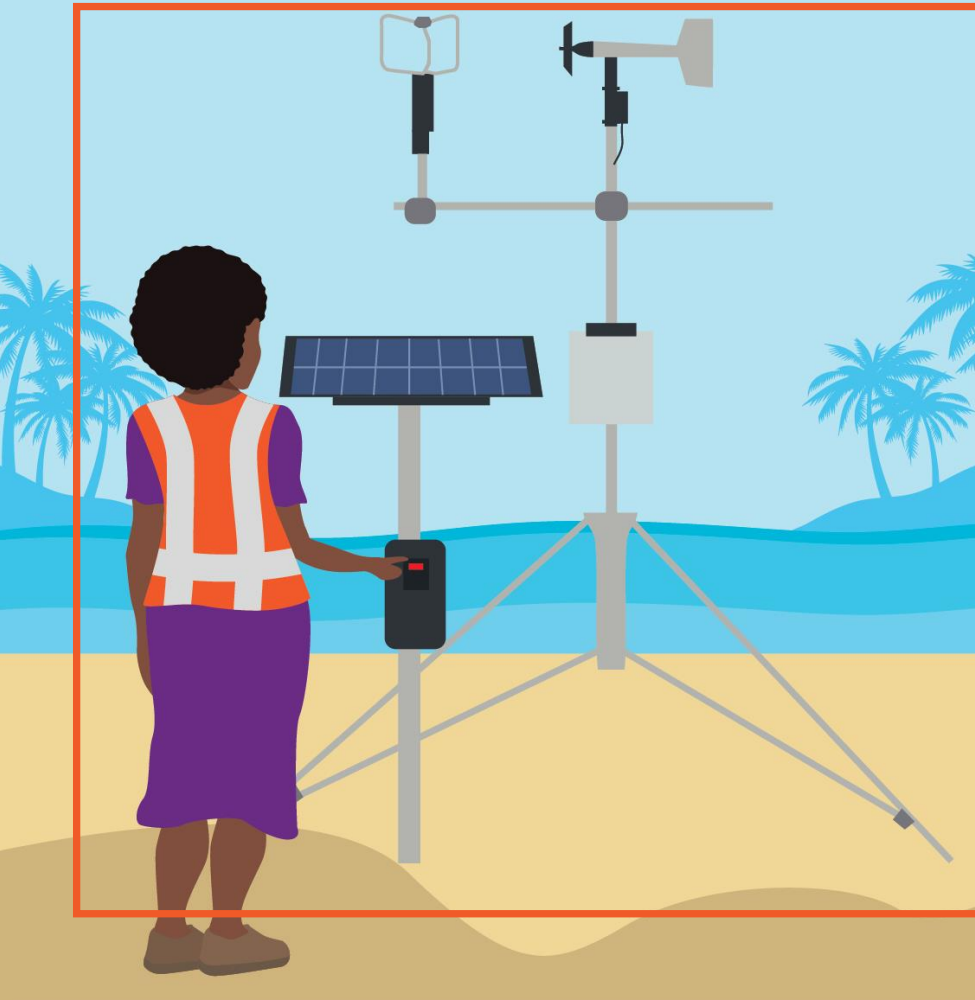
# Moderator



**Anne Hammill**

Senior Director, Resilience  
International Institute for  
Sustainable Development  
NAP Global Network  
Secretariat





# About the NAP Global Network

## Our Goal

Enhance national  
adaptation planning and  
action in developing  
countries





# Panelists



**Stella Okoh**

Principal Administrative  
Officer  
Climate Change  
Department, Environmental  
Protection Agency  
Ghana



**Lydia Wanjiku**

CEO  
Lensational  
Kenya



**UnaMay Gordon**

Regional Director  
Caribbean Women in  
Leadership  
Independent Environment &  
Climate Change Expert  
Jamaica



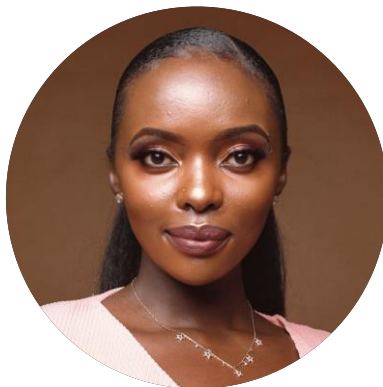


# Panelists



**Stella Okoh**

Principal Administrative  
Officer  
Climate Change  
Department, Environmental  
Protection Agency  
Ghana



**Lydia Wanjiku**

CEO  
Lensational  
Kenya



**UnaMay Gordon**

Regional Director  
Caribbean Women in  
Leadership  
Independent Environment &  
Climate Change Expert  
Jamaica







## Discussion

- Question for the panel?
- Reaction to what you've heard?

**Please don't hesitate to share your own experience as it relates to women's leadership in adaptation action!**



# Thank you!

Email:

[info@napglobalnetwork.org](mailto:info@napglobalnetwork.org)

Website:

[www.napglobalnetwork.org](http://www.napglobalnetwork.org)



[@NAP\\_Network](https://twitter.com/NAP_Network)



[NAP Global Network](https://www.napglobalnetwork.org)



**NAP  
Global  
Network**

This project is undertaken with the financial support of:  
Ce projet a été réalisé avec l'appui financier de :

Secretariat hosted by:  
Secrétariat hébergé par :

**Canada**



Federal Ministry  
for Economic Cooperation  
and Development

