

GGGI at the Durban Forum

SB64

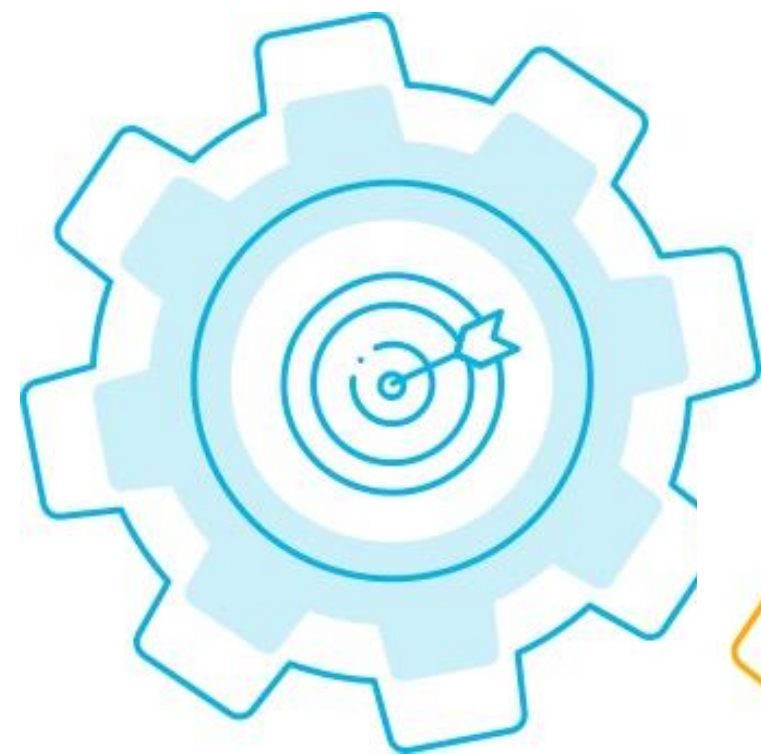
Nicholas Taylor
Adaptation and Resilience
Lead

June, 2026



VISION

A low-carbon resilient world of strong, inclusive, and sustainable growth.



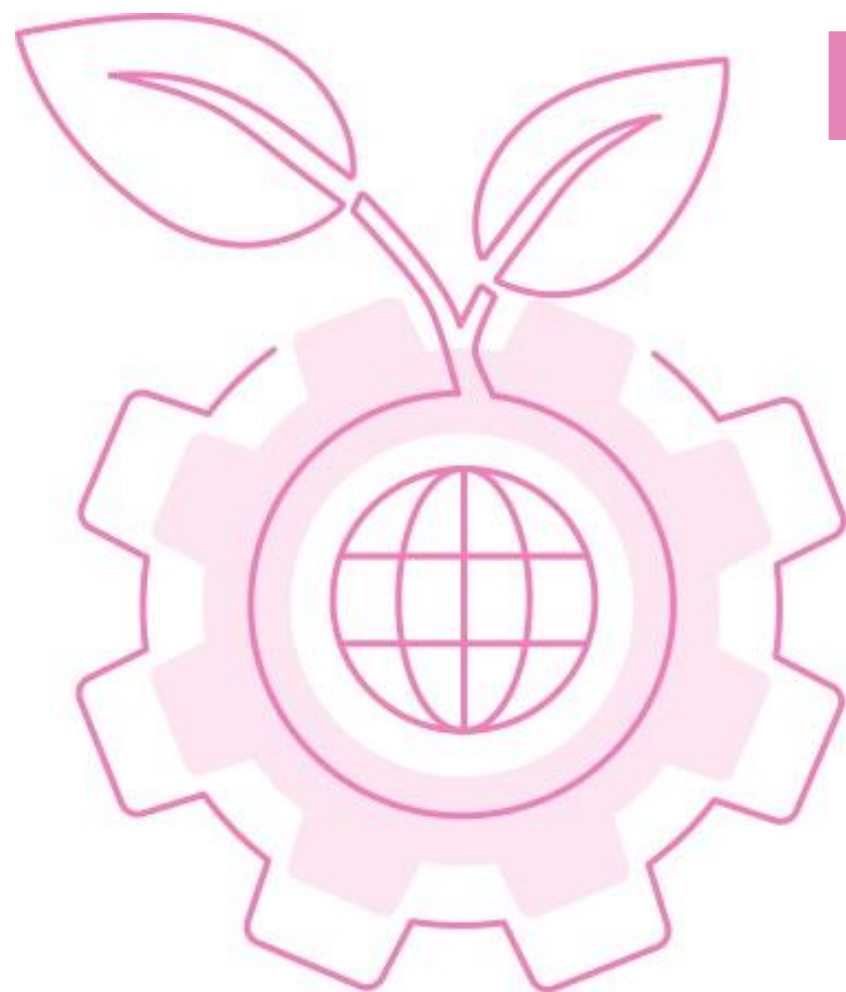
MISSION

GGGI supports its Member States in the transformation of their economies to a green growth economic model.



POSITION

A trusted advisor & development partner embedded in member & partner governments.



GGGI Adaptation Planning to Finance Approach

GGGI's member country offices collaborate directly with and are embedded in ministries

(of environment, Planning, Finance, but also in city governments or any Ministry that requests support)



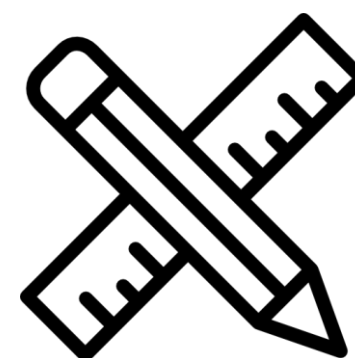
Structural Challenges Hinderling Adaptation Finance

Despite the increasing urgency for climate adaptation, scaling up of financing towards adaptation action is hindered by systemic barriers and by an absence of collaborative process and structures.



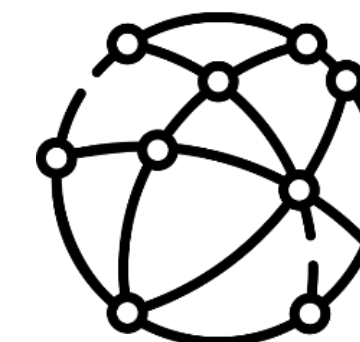
Limited Institutional & Technical Capacity

Climate-vulnerable countries face institutional and technical gaps—exacerbated by limited methodologies and climate data—hindering risk assessment and integration of adaptation into national planning.



Program Design & Bankability Challenges

Adaptation projects are context-specific, small-scale, and yield diffuse long-term benefits, making them difficult to replicate, scale, and monetize.

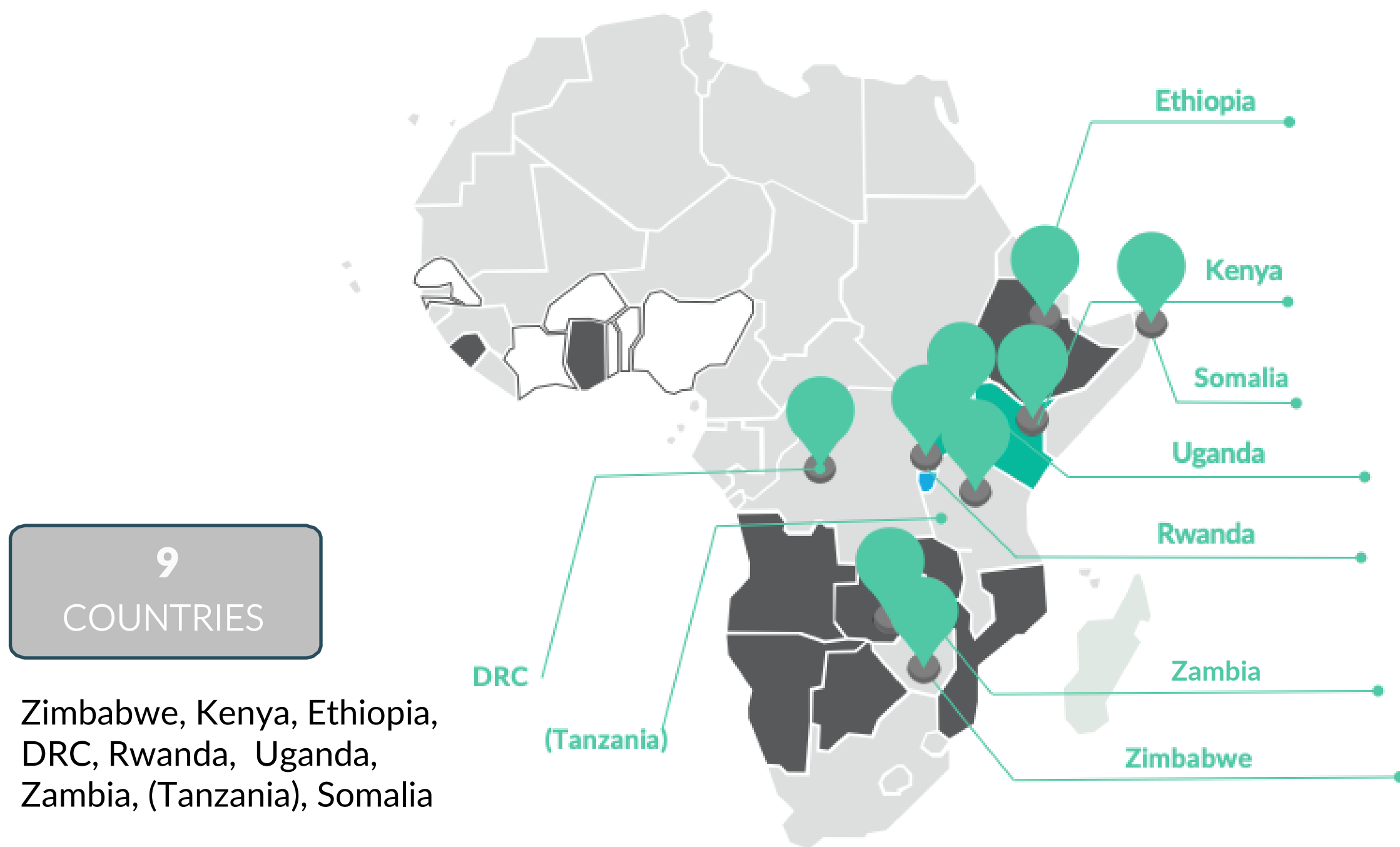


Lack of Integrated Investment Platforms

Existing global mechanisms are fragmented, focusing on either upstream capacity or downstream finance, leaving a midstream gap in project structuring and bundling.

Case Study: Leveraging Investments and Finance for a Green Transition (LIFT)

LIFT is an initiative to scale up climate finance and green financial inclusion. The initiative will support selected SIDA partners in partner countries with development cooperation in achieving their NDC targets by increasing access to up to \$50M in climate finance from public and/or private sources, with a strong focus on inclusivity and intersectionality.



Key Components of LIFT

Component 1



Increased access to climate finance through high-quality concept notes for financiers for a total value of **at least USD 50 million regionally and 1 Concept note per country**

Component 2



Strengthened **institutional capacity** to access and manage climate finance including accreditation to GCF and AF

Component 3

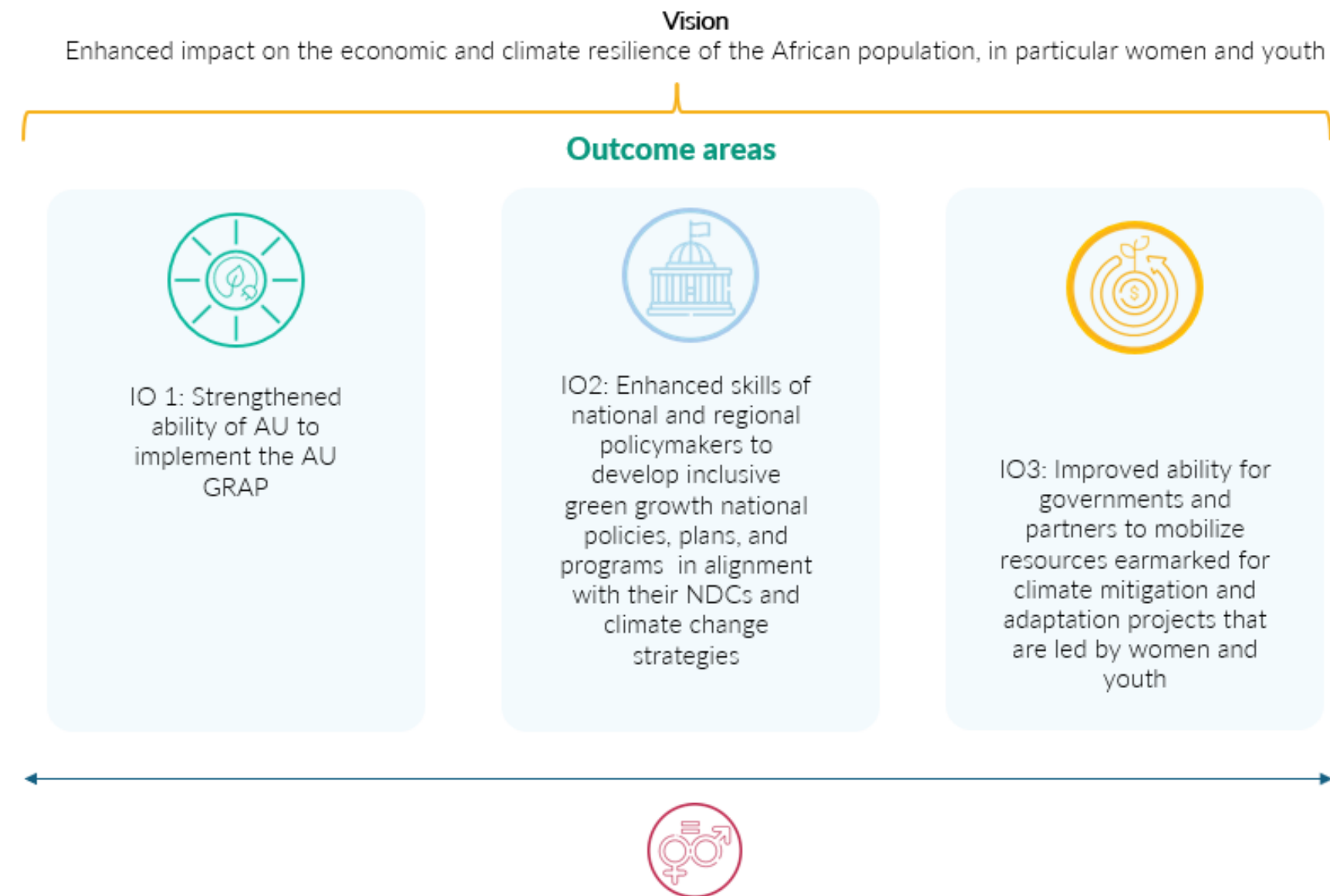


Increased **green loan portfolio** of selected banks, financial institutions, and financial inclusion partners (4-6)

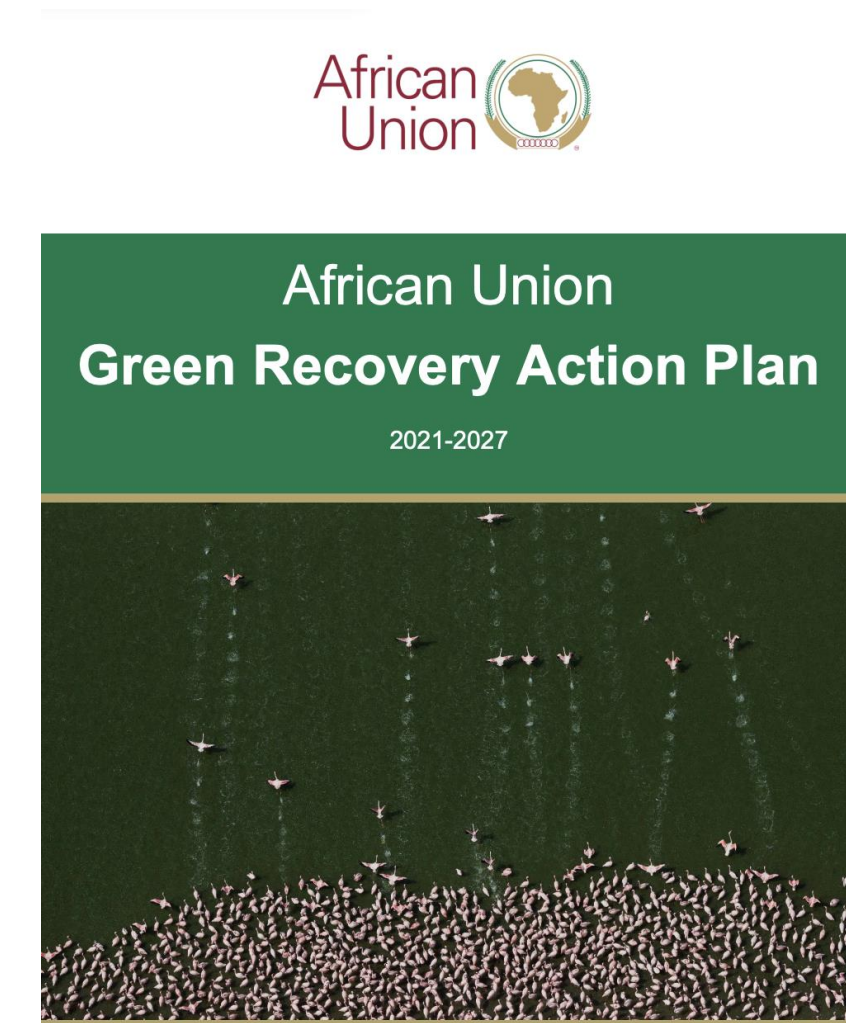
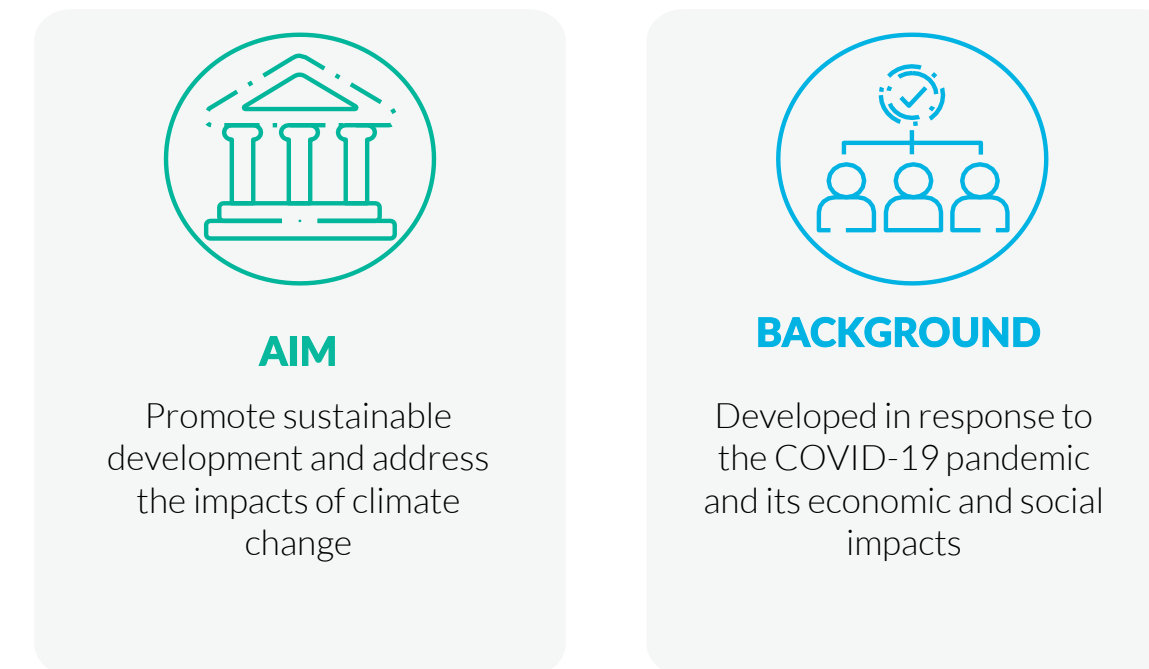
Case Study: Transformative Climate Finance Program of the African Union Green Recovery Action Plan (AU GRAP)

The AU Green Recovery Action Plan (GRAP) is a comprehensive strategy designed to promote green initiatives, reduce greenhouse gas emissions, protect the environment, and enhance resilience to climate change. GGGI implements the project jointly with the Africa Union Commission and the Africa Capacity Building Foundation. GGGI provides technical assistance to AUC to support the operationalization of the AU-GRAP initiative.

Vision and Outcomes



AU-GRAP



Case Study: Climate Finance Access Network.



Embedded Climate Finance Advisors

- Improve project/programme structure
- Enhance country ownership
- Strengthen proposals
- Write the concept note/funding proposals
- Support coordination



Capacity Building

- Advisors trained
- Trainings and workshops for government officials
- Regional knowledge sharing



Meet the Team

Regional Technical Lead



MS. CHARLOTTE TURK

Senior Programme Assistant



MS. LEIMOR PENJUELI

Fiji



MS. BAHUMI MOTLHANKA

Kiribati



TBC

PNG



MR. PHONESAVANH LATMANY

Tonga



MR. LANO FONUA

Solomon Is.



TBC

Tuvalu



MR. SUIFUA AFERETI

Samoa



MR. SHELVEEN KUMAR

Vanuatu



MR. ANDRES TORO



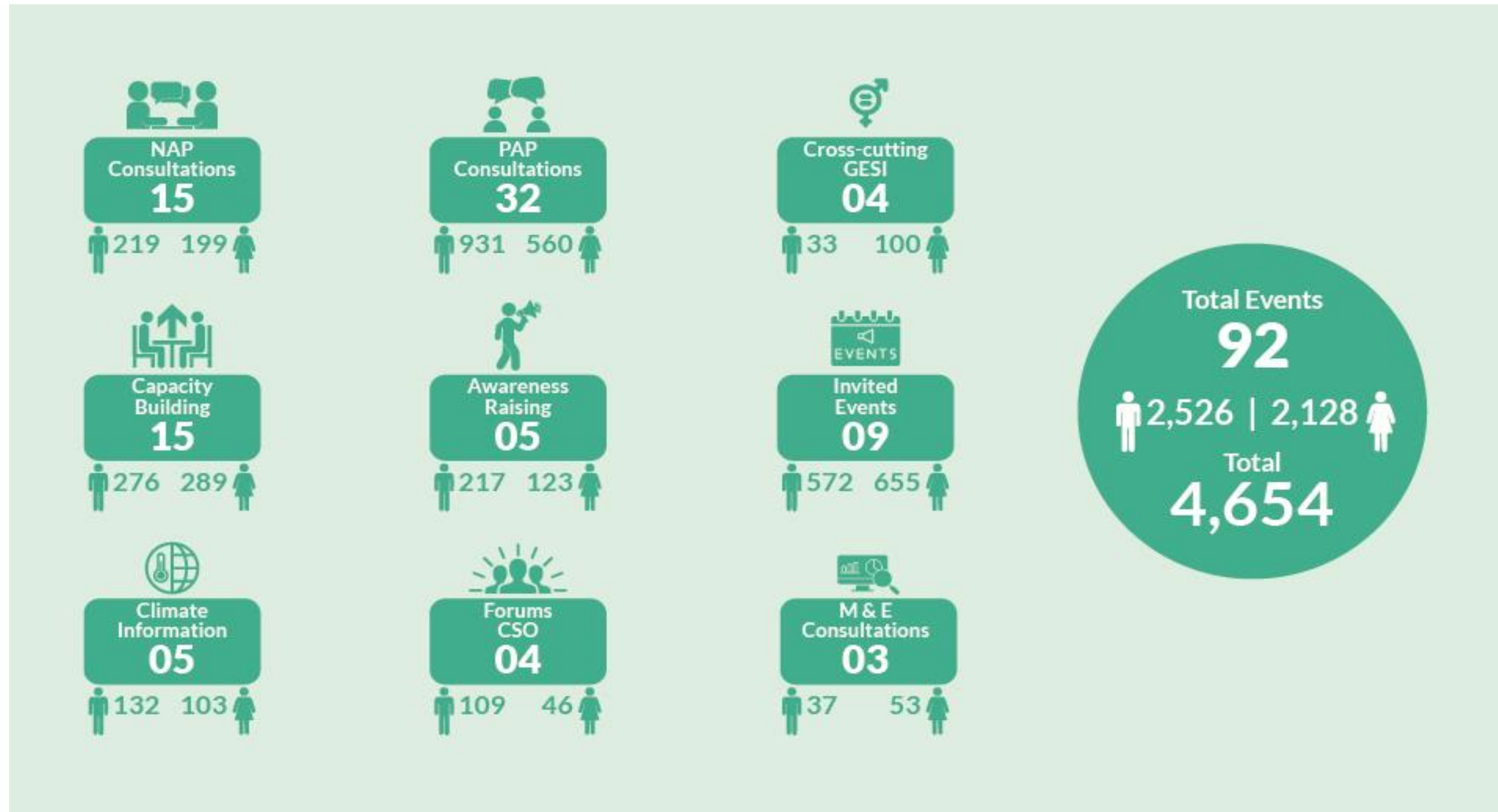
National Adaptation Plan for Climate Change Impacts in Sri Lanka (2026-2035)



An Inclusive and Evidence-Based NAP Formulation - Consultative, Highly Participatory Process



IWMI



Sri Lanka's NAP (2026- 2035)

Validations

- National Expert Committee on Climate Change Adaptation
- National Steering Committee on the NAP Readiness Support Project
- Ceylon Chamber of Commerce

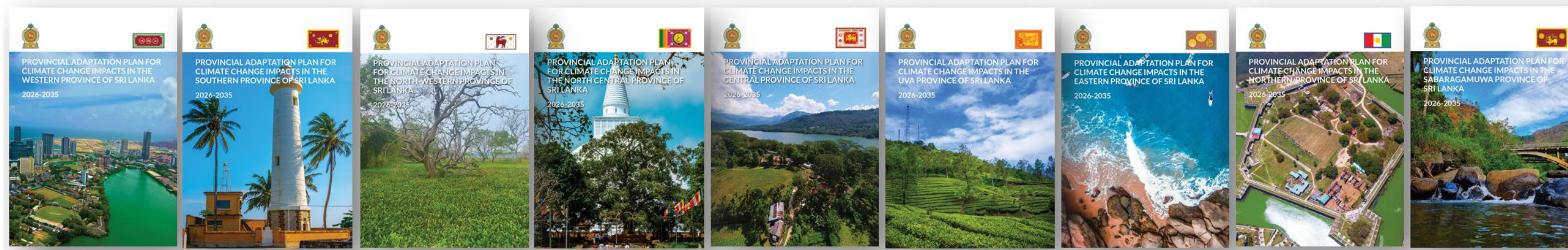
From Planning to Implementation – A Costed, Aligned and Actionable Framework



13 Sectoral Adaptation Action Plans



09 Costed Provincial Adaptation Plans



13 Sectoral Adaptation Action Plans aligned with sector policies & NDC 3.0.

Each plan includes **user-friendly risk dashboards, adaptation strategies, KPIs, timelines, responsible agencies, and indicative costs.**

9 costed Provincial Adaptation Plans (PAPs) integrated into provincial planning.

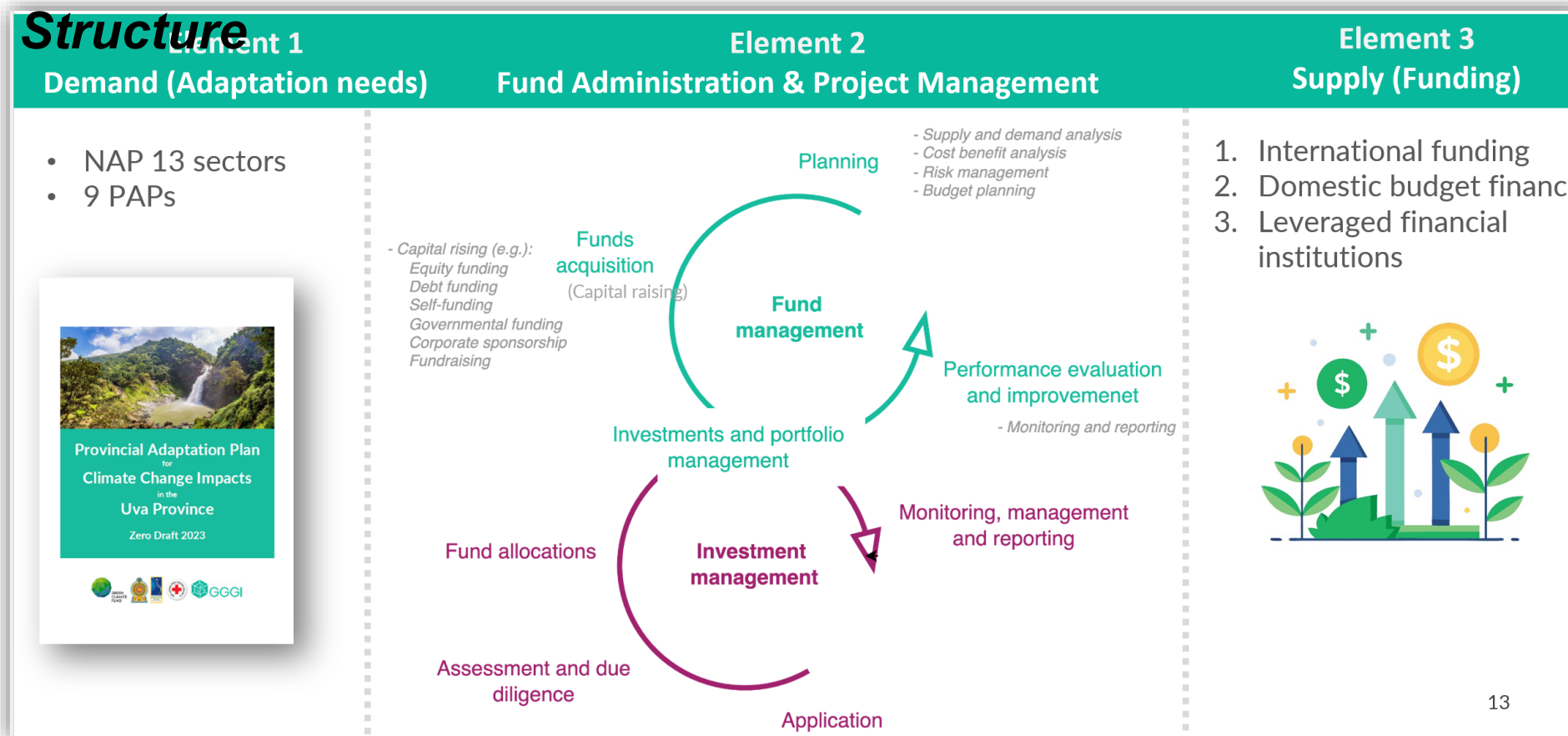
Gender & Social Action Plan (GSAP) ensures inclusivity and equitable benefits.

Monitoring, Evaluation & Learning (MEL) Framework to track progress.

Financing Resilience – Connecting Plans into Investment Opportunities



National Adaptation Fund (NAF) Operating Structure



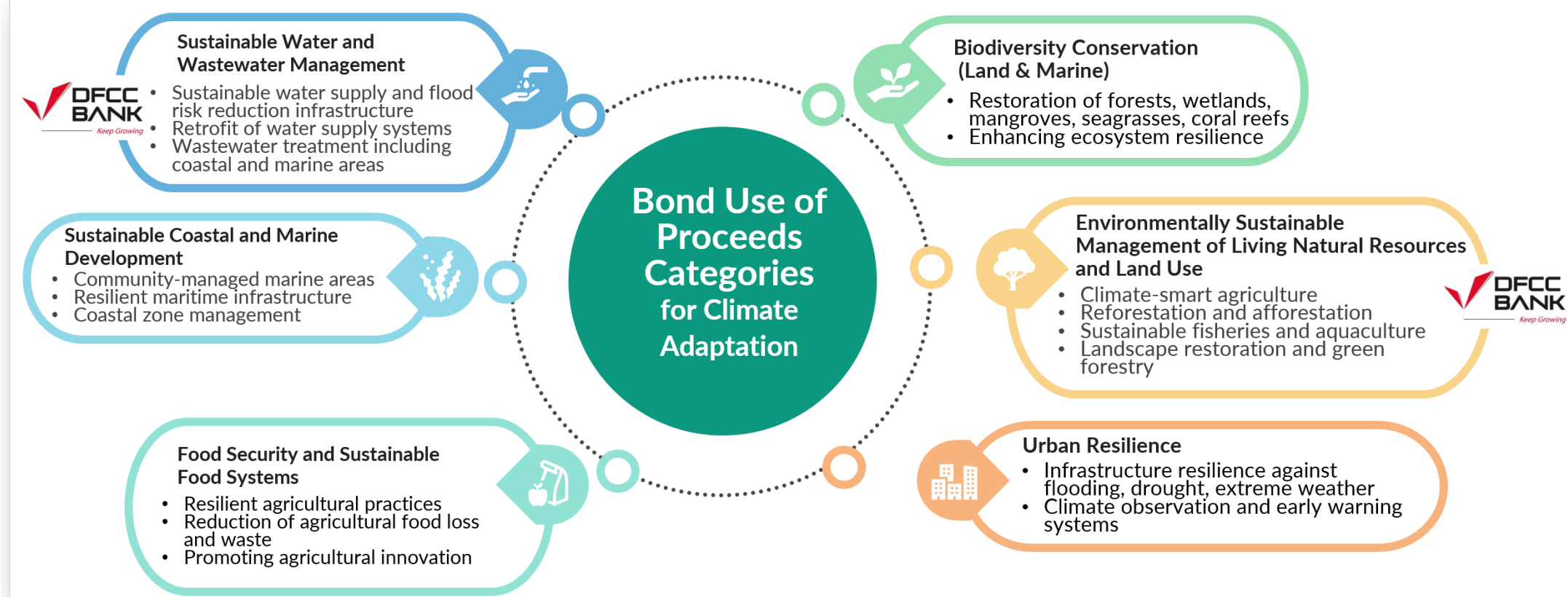
NAP Financing Framework defines indicative investment envelopes & priority pipelines.

Linked to **National Adaptation Fund (NAF) feasibility**

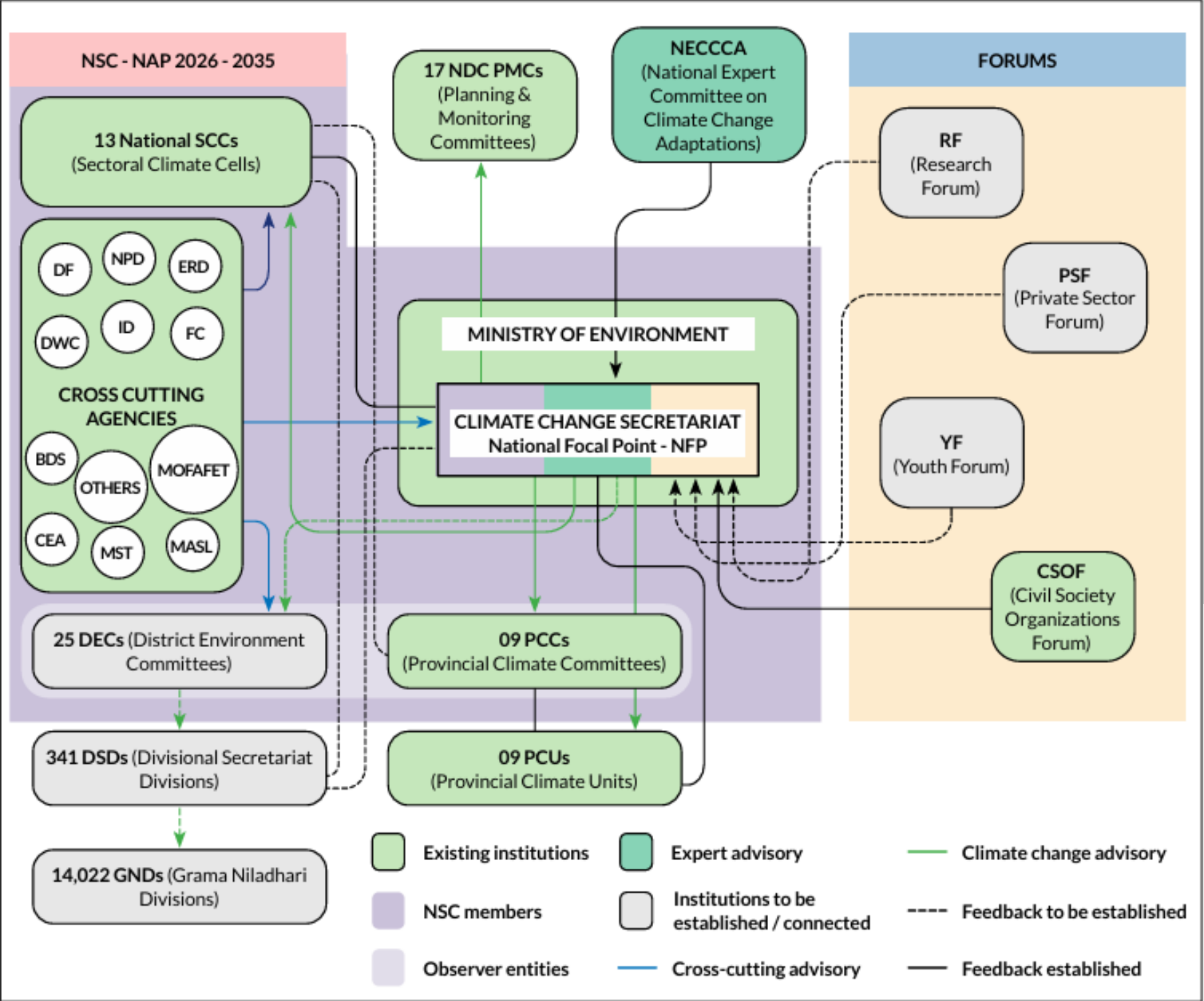
Mechanisms explored: **thematic bonds, blended-finance, provincial integration.**

Positions Sri Lanka to move from **planning → implementation → investment** once NAP approved by Cabinet.

Financing adaptation through thematic bonds



Institutional Framework for Climate Resilience Building



Source: Forthcoming NAP (2026-2035), Ministry of Environment, Sri Lanka.

- Institutional architecture at both national and sub-national levels
- Establishment of **Provincial Coordination Units (PCUs)** and **Provincial Climate Committees (PCCs)**, ensuring stronger coordination between national and local levels
- Including a range of stakeholder groups

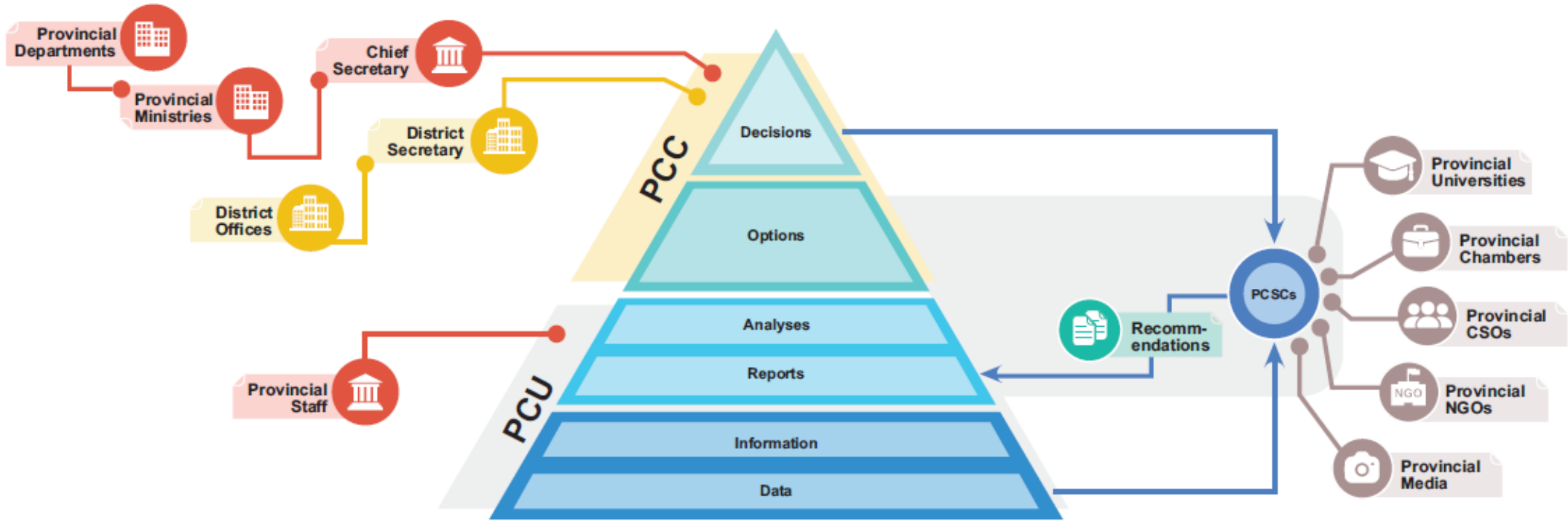


Figure 7.2: The provincial-level institutional arrangement supporting PAP implementation (Source: GGGI, 2023)



Thank you



19th Floor Jeongdong Bldg. 21-15,
Jeongdong-gil, Jung-gu, Seoul,
Republic of Korea 04518

 www.gggi.org

 [@ggi_hq](#)

 [@GGGIHQ](#)

 [@GGGIHQ](#)

 [@ggi_hq](#)

 [@GGGIMedia](#)

