

# RAIL CONTRIBUTION TO THE GST!



## Challenges of the transport sector

Transport has the highest reliance on fossil fuels of any sector and accounts for 37% of CO<sub>2</sub> emissions from end-use sectors. Yet, national transport plans are often detached from climate policy and strategies, reflected on unambitious and generic targets in LTSs and NDCs. Although many initiatives address the transport sector, more needs to be done to ensure a systemic transformation, through an Avoid-Shift-Improve approach, in that order of priority.

## Why is rail a climate solution?



Rail is the lowest GHG and energy intensity of all motorised modes with a Global average of 19g CO<sub>2</sub>-eq/passenger km in 2021.



It is the most electrified transport mode: 60% of passenger and nearly half of freight movements use electricity.

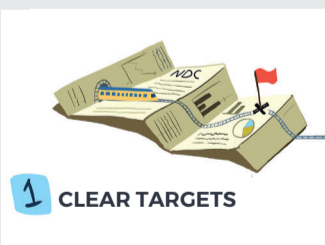
## Rail Climate Declaration

The UIC Railway Climate Declaration sets out a pledge for members to communicate their support and ambition and brings together a global community of sustainability leaders.

- 1 Reduce specific energy consumption and CO<sub>2</sub> emission, contributing to the "Low Carbon Rail Transport Challenge"
- 2 Carbon Neutrality by 2050
- 3 Contribute to the UN Sustainable Development Goals (SDGs).

## Key asks

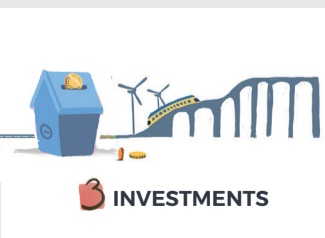
The UIC Railway Climate Declaration sets out a pledge for members to communicate their support and ambition and brings together a global community of sustainability leaders.



Commitment at the highest levels to specific policy targets and long term planning



Incentivising rail and enabling fair competition with other modes



Climate finance for trains, for tracks and for a just transition

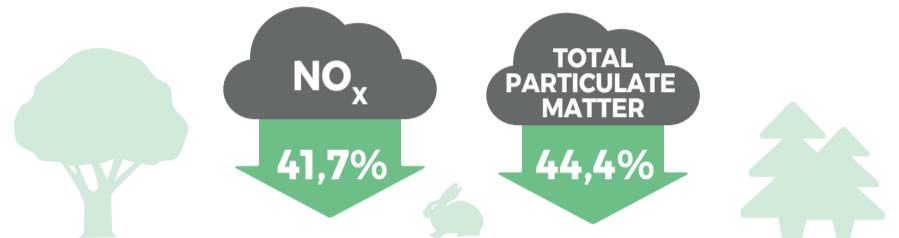
## Rail Sustainability Index

A benchmarking tool to track rail's performance based on the UN Sustainable Development Goals, including:



### THE UIC ENERGY AND CO<sub>2</sub> TRACTION DATABASE

RECORDED FROM 2005 TO 2021



61% of the lines are electrified



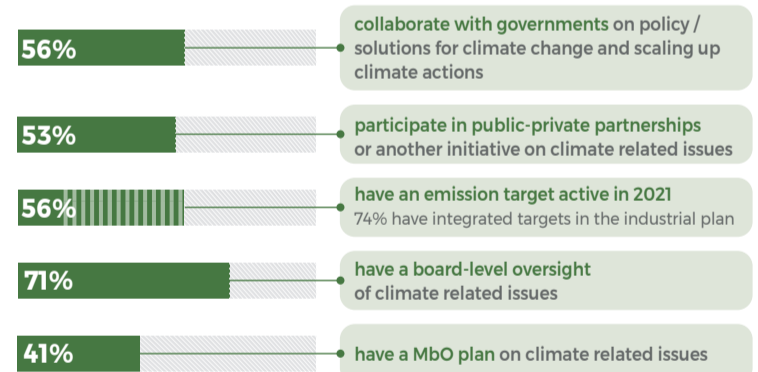
53% have in place a target for renewable energy that is constantly monitored



## 23 UIC MEMBERS WORKING TOGETHER



Passenger Accessibility Solutions Support and Action Group of Experts



And other SDGs:

