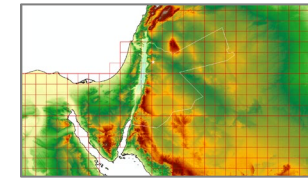
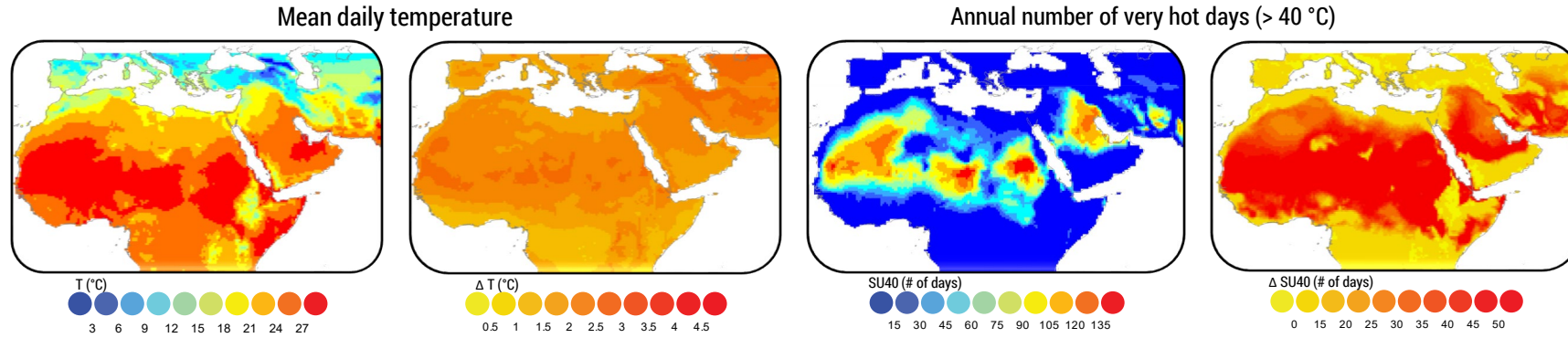
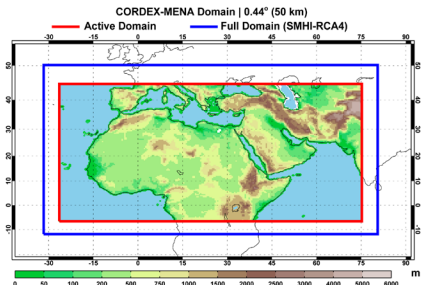


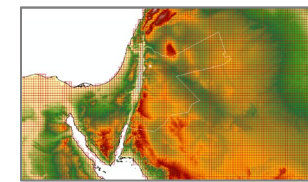
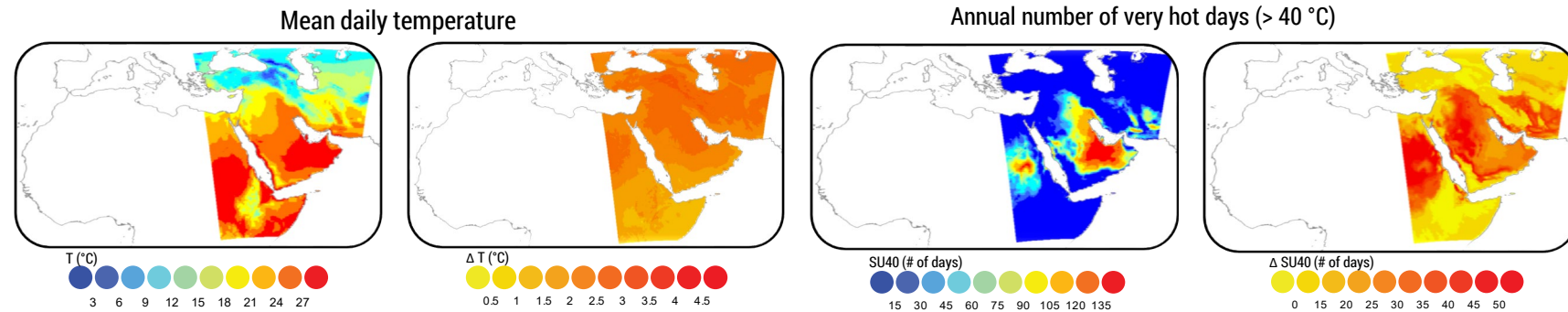
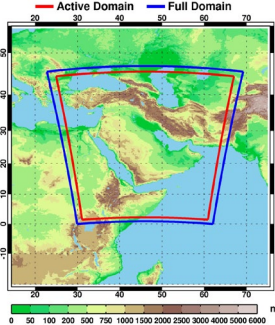
From CMIP5 across the CORDEX-MENA/Arab Domain to support regional cooperation . . .



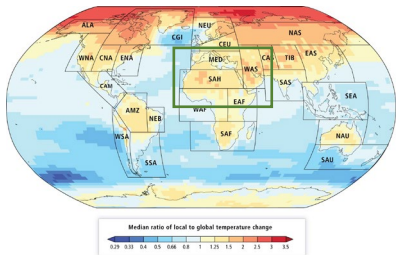
50 km² scale

. . . To CMIP6 within the Mashreq Domain to facilitate more detailed analyses to inform regional action

RICCAR Mashreq Domain | 10km | MSH-10
HCLIM-ALADIN (SMHI)



10 km² scale



Mean changes in annual temperature and number of very hot days (> 40 °C) are for 2041–2060 (RCP8.5/SSP5-8.5) compared to 1981–2000.

Increasing temperature will give rise to extreme events, including heat waves, and impact water availability, agricultural productivity, biodiversity and vulnerable populations.

The RICCAR Regional Knowledge Hub provides climate analysis that informs regional cooperation & policymaking in Arab States.