



Facilitative Sharing of Views

Papua New Guinea's Second Biennial Update Report

Dubai, United Arab Emirates

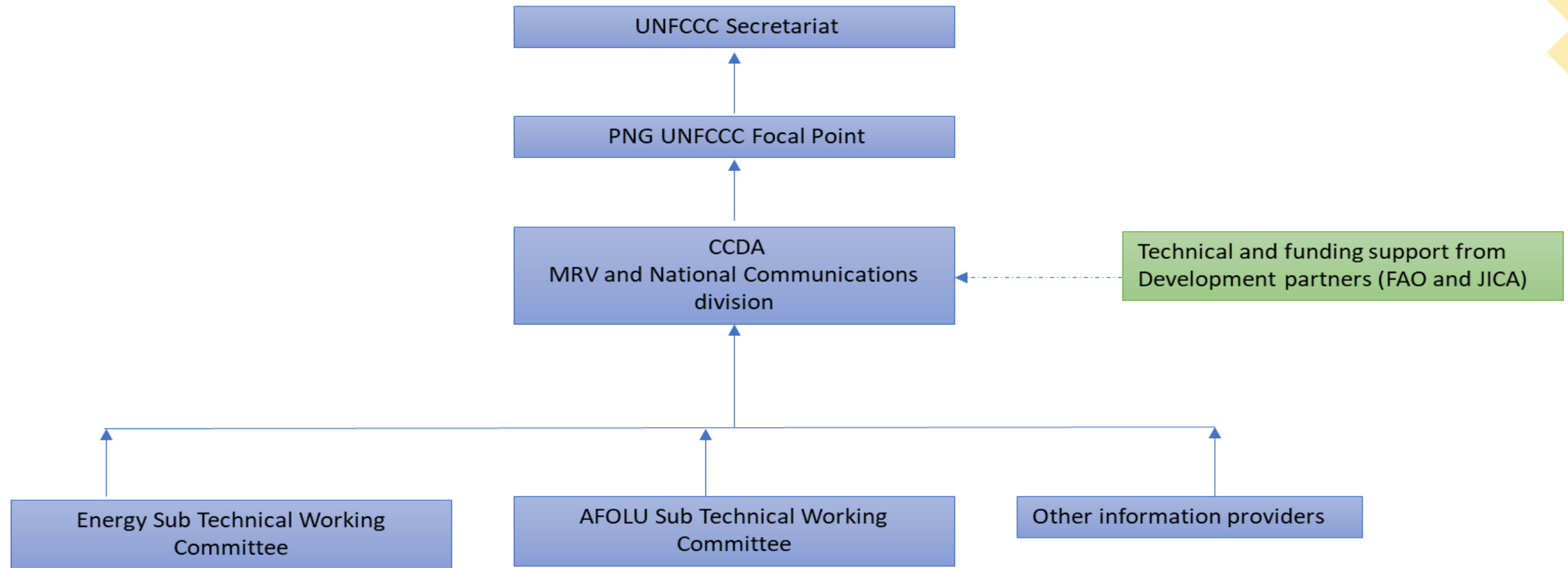
3rd of December 2023

Presentation Outline

- ✓ National Context - Institutional Arrangement
- ✓ GHG Inventory
- ✓ Mitigation Actions and Effects
- ✓ Support Needed and Received
- ✓ ETF Transition and Implementation

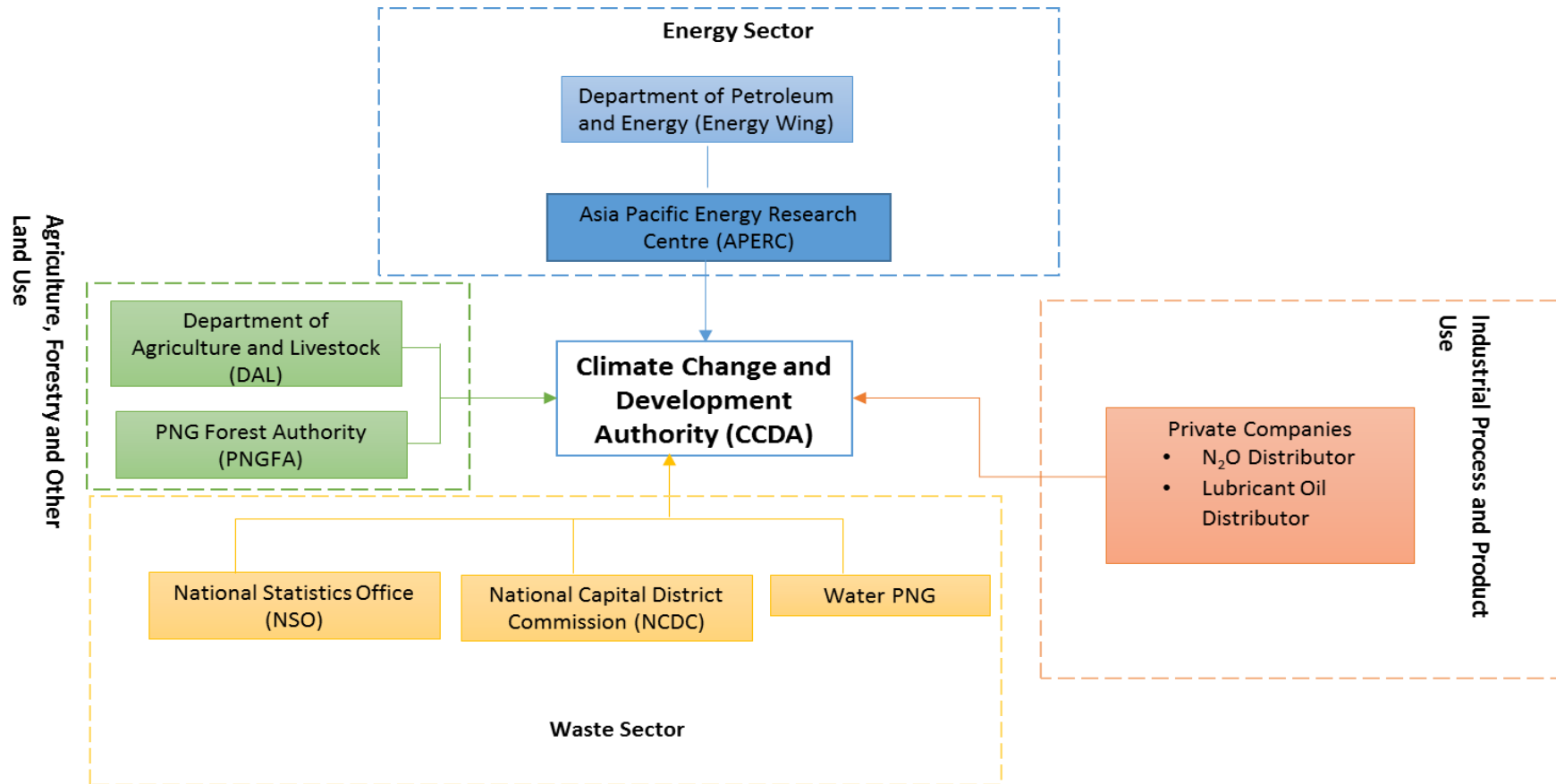


National Context-Institutional Arrangement



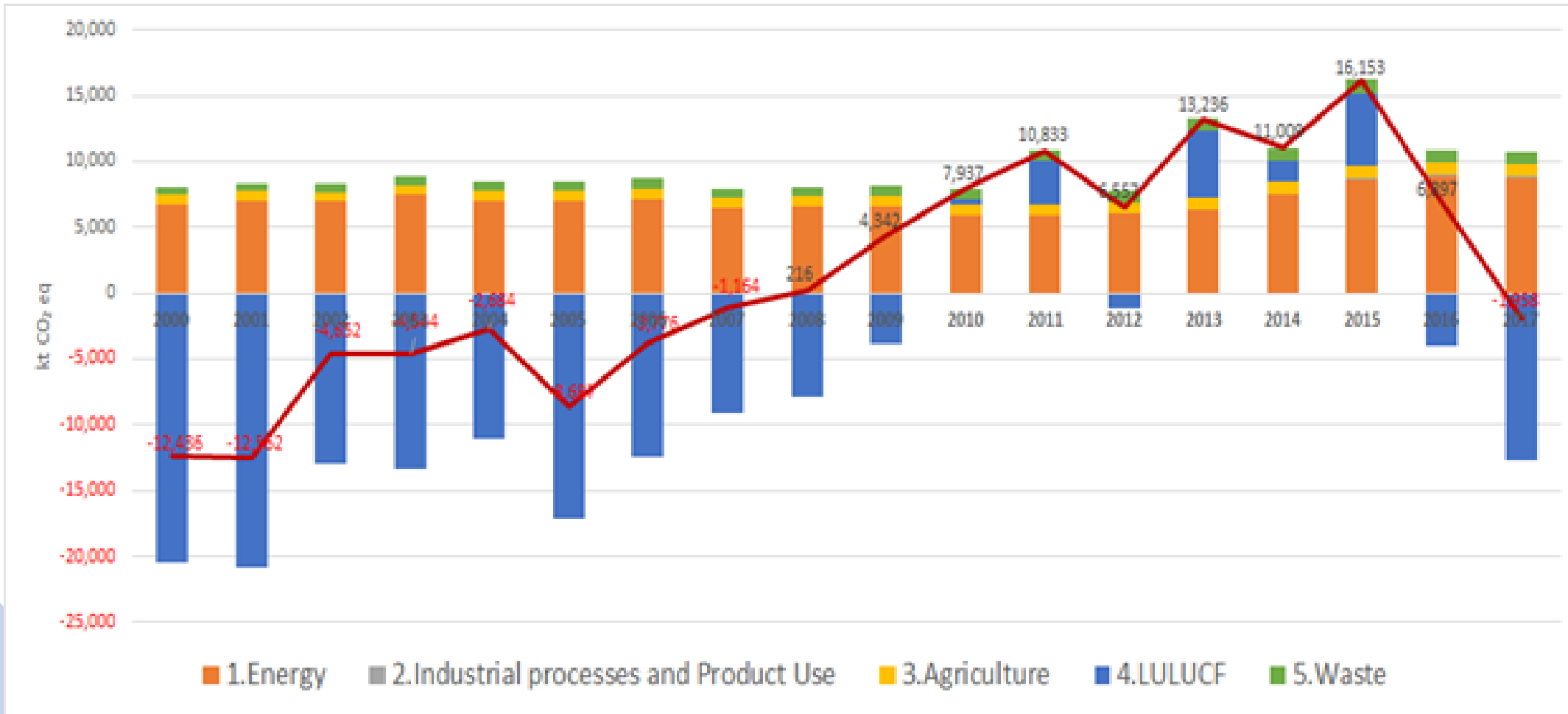
- The Climate Change and Development Authority (CCDA) is the mandated entity in PNG for preparing reports under the UNFCCC as per the Climate Change (Management) Act
- Improvements made for the BUR2 preparation compared to the BUR1 is the establishment of Energy and AFOLU Sub-Technical Working Committees

GHG Inventory- Institutional Arrangement



- CCDA collaborates with the designated sector lead agencies to compile the GHG inventory.
- Through this collaboration CCDA received activity data and emission factors to enable estimation of GHG emissions.
- Private companies provide this data when sector lead agencies are unable.

GHG Inventory-Emissions and Removal Trends



- PNG went from a net sink of (-12,436 kt CO₂ eq) in 2000 to a net source in 2016 (6,897 kt CO₂ eq). Then in 2017, PNG became a net sink with a total GHG emissions of -1,958 kt CO₂ eq.
- The main driver for the increasing and decreasing trend is the LULUCF sector mainly from deforestation and degradation activities in the country.

Mitigation actions and effects – Enhanced NDC

IPCC Sector	Mitigation Action
Energy	Enhance levels of renewables in the energy mix from 30% in 2015 to 78% by 2030 for on-grid connection
	Reducing electricity demand through energy efficiency
	Fossil fuel off-setting from energy industries sub-sector through nature-based solutions
Agriculture Forestry and Other Land Use	by 2030, annual net emissions from deforestation and forest degradation due to agriculture expansion and commercial logging is reduced by 10,000 Gg CO ₂ eq compared to 2015 level
	LULUCF will be converted from net GHG source (1,716 Gg CO ₂ eq) in 2015 to net GHG sink (-8,284 Gg CO ₂ eq) by 2030 to mitigate emissions from other sectors
	The area of annual deforestation is reduced by 25 % of 2015 level by 2030 (equating to a reduction of 8,300 ha of annual deforestation)
	The area of forest degradation is reduced by 25 % of 2015 levels by 2030 (equating to a reduction of 43,300 ha of annual degradation)
	The area of planted forest and forest restoration is increased
	Enhanced land use planning
	Promoting climate-friendly agriculture
	Enhancement of timber legality
	Promoting REDD+
	Promoting downstream processing
Promoting the Painim Graun Planim Diwai initiative and planting 10 million trees initiative	

Mitigation actions and effects – Information on Policies and Measures

➤ Enhanced NDC Implementation Plan (2021- 2030)

- Objective – To reach the Enhanced NDC targets
- AFOLU – 20 direct action and 5 enabling pathways
- Energy – 36 RE projects and 6 activities



➤ NDC Implementation roadmap for the electricity sector

- Objective – To support PNG's aspiration for a 78% share of renewable energy by 2030 (on-grid)
- Builds on 36 RE projects illustrates pathways for implementing these projects and articulates aspects of the enabling environment

➤ NDC Implementation roadmap for AFOLU

- Objective – To provide a clear AFOLU NDC Implementation roadmap around which actions and investment can be mobilized.
- It provides further information on the 20 direct action pathways and 5 enabling pathways

➤ Other existing and planned mitigation projects (inc. international markets)

- CDM
 - 8 Registered projects – 1 RE generated from Geothermal Power Project and 7 RE generated from RE generated from Methane capture
 - Status – 3 Projects Implemented (1RE from Geothermal and 2 RE from Methane capture)
 - Results –200,376 tCO₂ eq/yr from 2007 – 2008 (RE generated from Geothermal Power)
- 94,725 tCO₂ eq in 2013 (2 RE from Methane capture)
- Gold Standard
 - 2 Registered projects – 1 RE generated from Biomass and 1 Afforestation and Reforestation
 - Status- Yet to be implemented
 - Results – None
- REDD+
 - Status – National REDD+ Strategy Implemented
 - Results – 5,045,902 Gg CO₂ eq (2015)



Support received and needed (finance, technology, capacity building)

➤ Support needed

- Finance

1 Billion USD (est) to achieve Enhanced NDC targets between 2021-2030 (as per NDC Implementation Plan)

- Technology

- ✓ Energy – 10 solar projects and 10 hydro projects (NDC Implementation Road Map for the Electricity Sector)
- ✓ AFOLU - monitoring systems assets (NDC Implementation Road Map for the AFOLU Sector)
- ✓ Transport – climate-resilient transport infrastructures for all modes of transport inclusive of airports, wharves roads, and bridges ((as per NDC Implementation Plan)

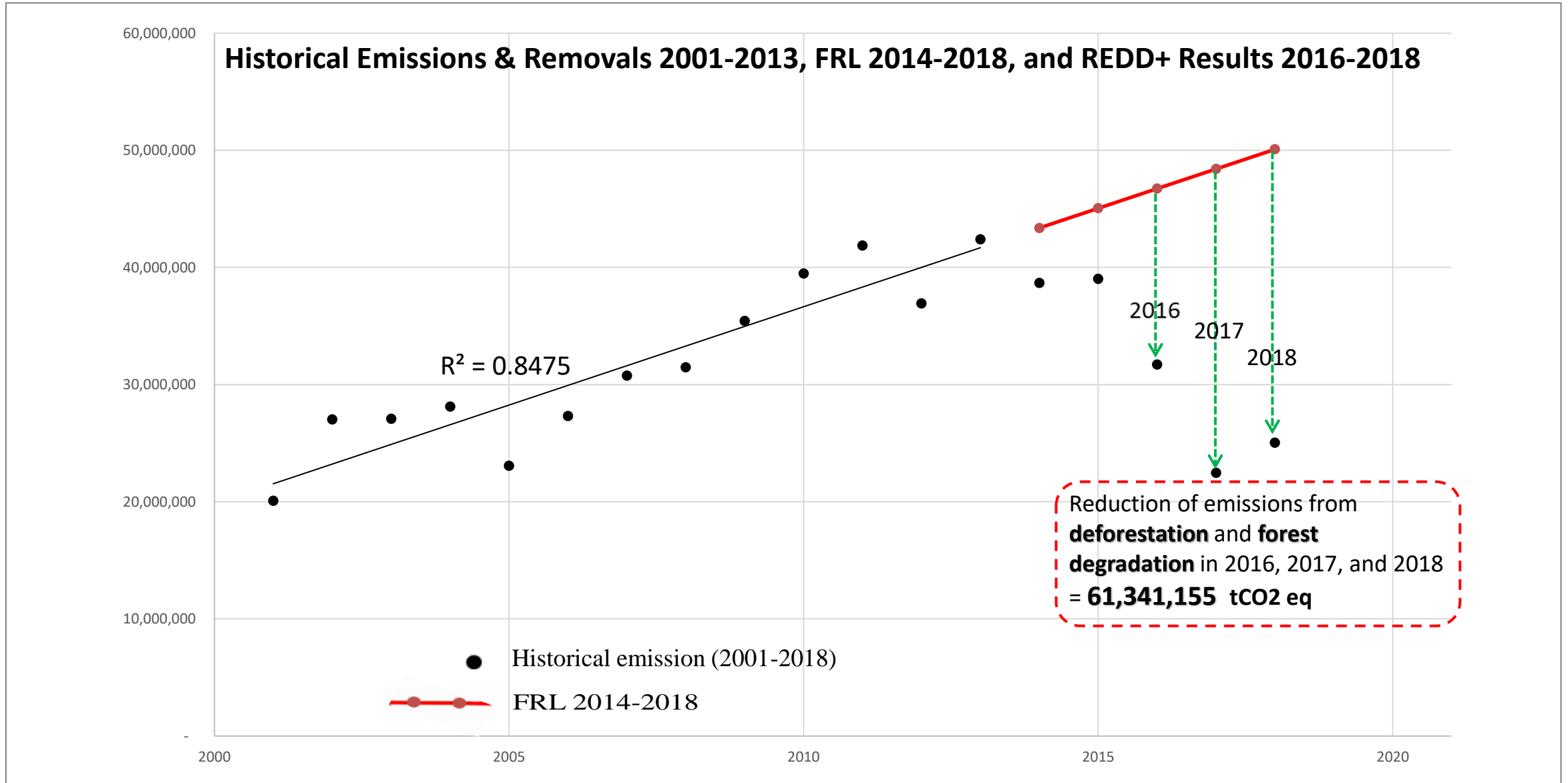
- Technical and capacity building needs

- ✓ Cross-cutting - sectoral policies to address climate change issues, Monitoring and Evaluation (M&E) knowledge and skills, Technology Needs Assessment, Financial needs analysis
- ✓ Adpatation - Vulnerability Needs Assessment (VNA) knowledge and skills, Climate-Induced Hazard modelling knowledge and skills
- ✓ Mitigation – Impact assessment, sustainable development assessment, transformative change assessment, mitigation assessment tools.
- ✓ GHG Inventory – Enhance understanding of IPCC Guidelines (2006 and 2019), GHG tools, uncertainty assessment, QA/QC tools and data archiving

➤ Support Received

- USD 156.8 Million received between 2017 and 2022
- 26 projects were implemented
 - ✓ 8 adaptation
 - ✓ 6 mitigation
 - ✓ 4 MRV
 - ✓ 8 cross-cutting

REDD+ Results in the Years 2016, 2017 and 2018 (in the technical annex of PNG BUR 2)



ETF transition and Implementation

- PNG developed an ETF roadmap for the AFOLU sector
- PNG developed a National GHG Improvement Plan
- PNG developed and launched the National Adaptation Plan which will be used as a guide to report adaptation actions
- PNG has enhanced its Institutional arrangements to implement the ETF
- PNG is in the process of securing the CBIT-phase 2 under the GEF-8
- PNG practitioners have been attending ETF-relevant trainings and workshops to equip them with the knowledge and skills to implement the ETF



Thank you

Mr Jason Paniu

A/MRV Manager

Climate Change and Development Authority

Papua New Guinea

