

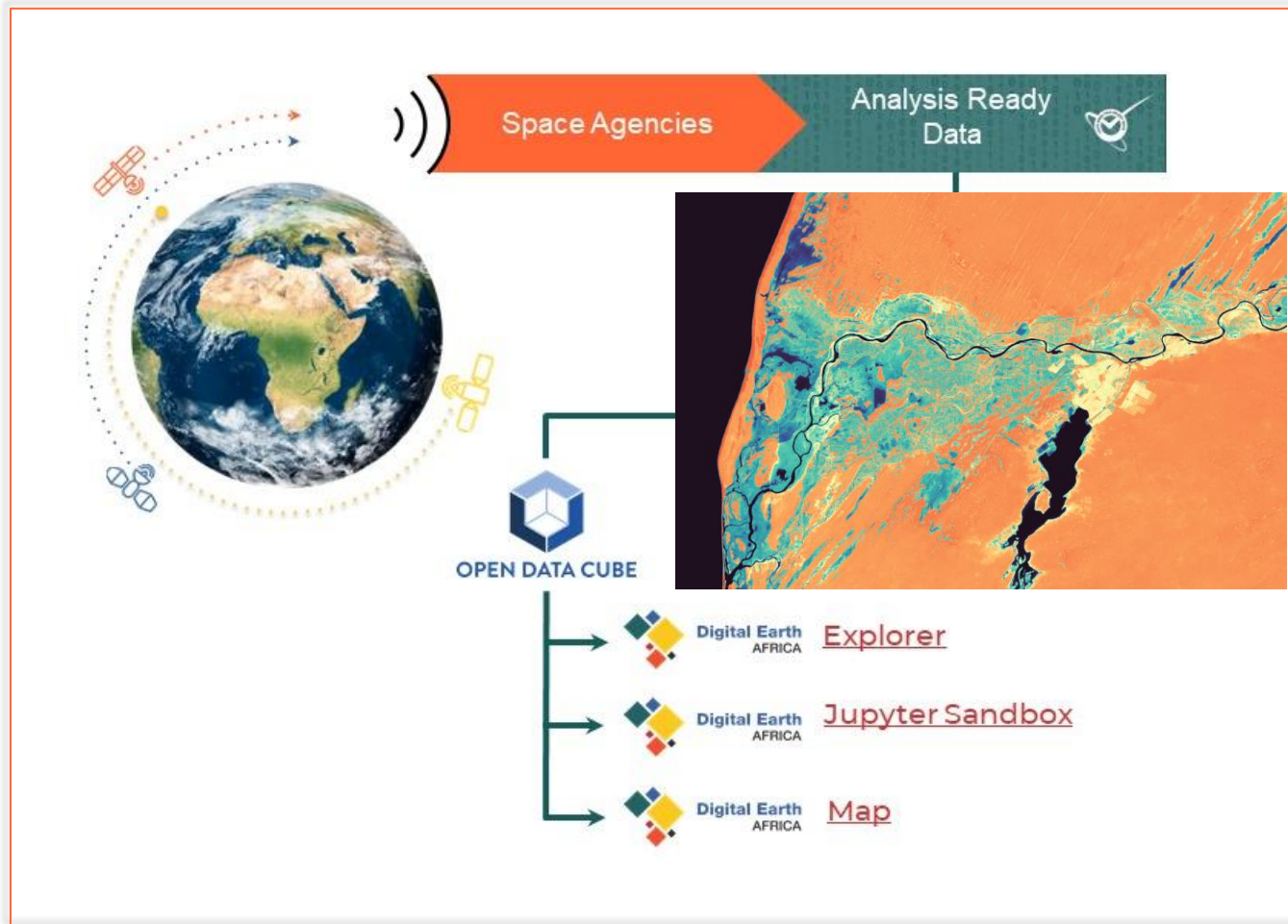


Digital Earth
AFRICA

Earth Observation based operational services for Africa

Lisa-Maria Rebelo, Lead Scientist
Digital Earth Africa

Analysis Ready Data, Decision Ready Products



- Entirely cloud native
- Powered by Open Data Cube technology
- Optimized EO data for web processing
- Complete visibility from the data to the co-designed products
- Different interfaces for different needs
- Extensive library of SDG-oriented tools
- Climate action toolkit
- Users can build complex analyses on priority thematic areas in their own environment
- Free online learning platform, helpdesk

EO Informed Adaptation Planning; Urban Areas

High resolution data are available through Digital Earth Africa for all African cities:

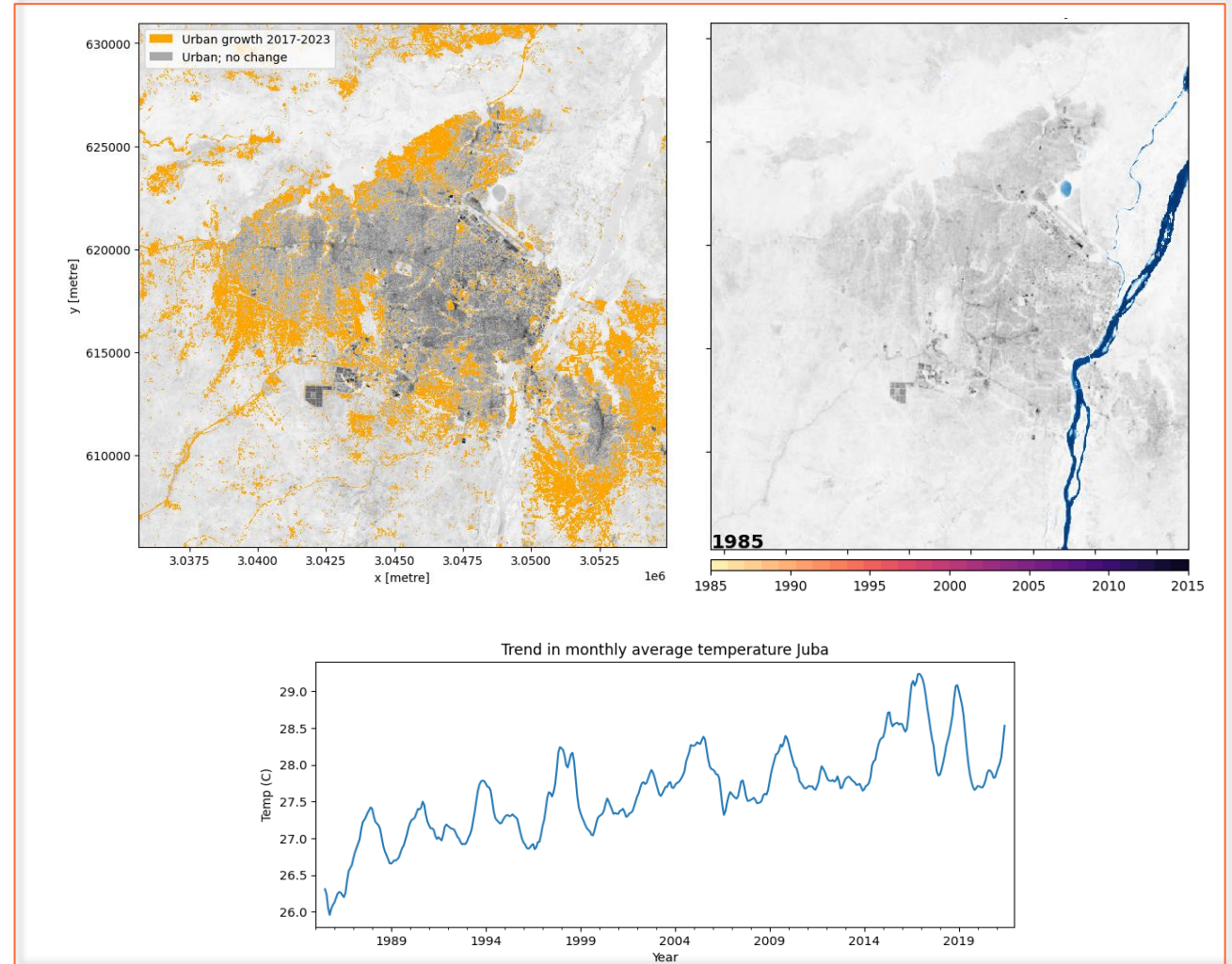
- Monitor change in urban extent
- Assess and analyze changes in surface temperature
- Map green spaces and their evolution

Data are being used:

- To diagnose cities' resilience and inform land-based policy and financing
- As foundation for the national statistics systems of Ghana Statistical Services

Africa's coasts are major socio-economic hubs:

- 38 African countries
- Half of the 15, rapidly expanding, African megacities



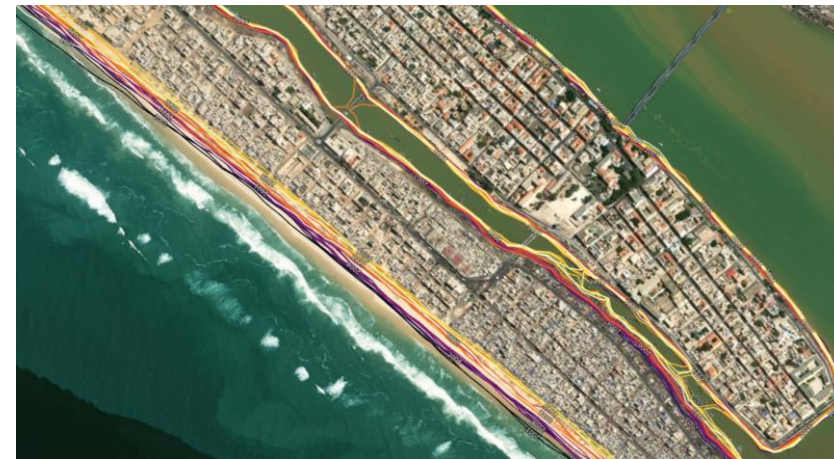
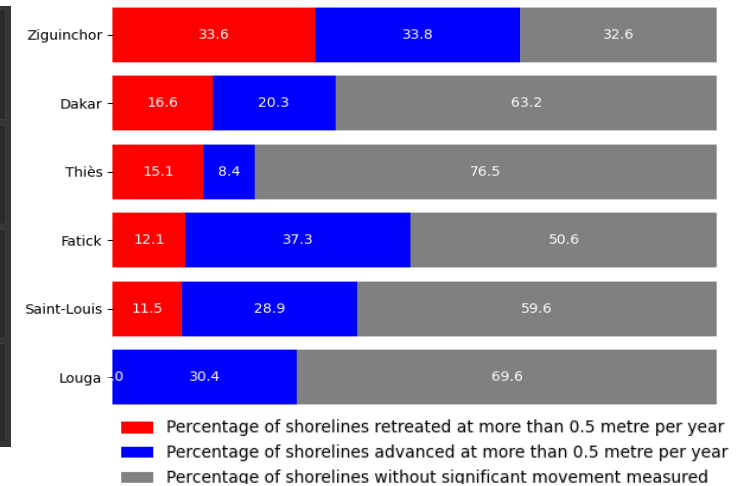
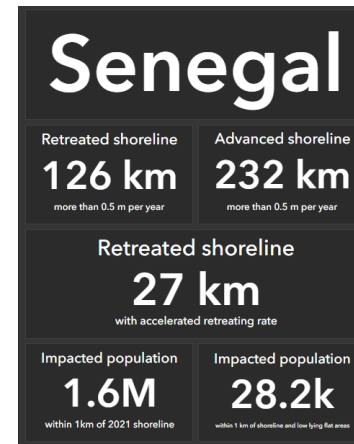
EO Informed Coastal National Adaptation Plans



Assessing risk and identifying adaptation options for coastal change requires consistent and regularly updated data across the continent

Digital Earth Africa's **Coastlines** service tracks continental changes **from 2000**, monitoring more than **60,000 km of coasts**, providing:

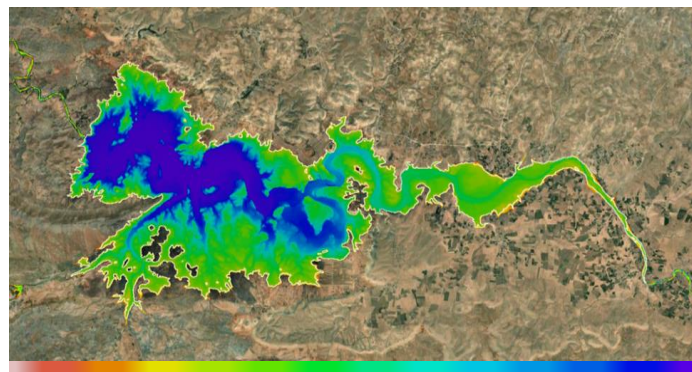
- Hotspots
- Rates of changes
- Average yearly shorelines



Operational Monitoring of Surface Water

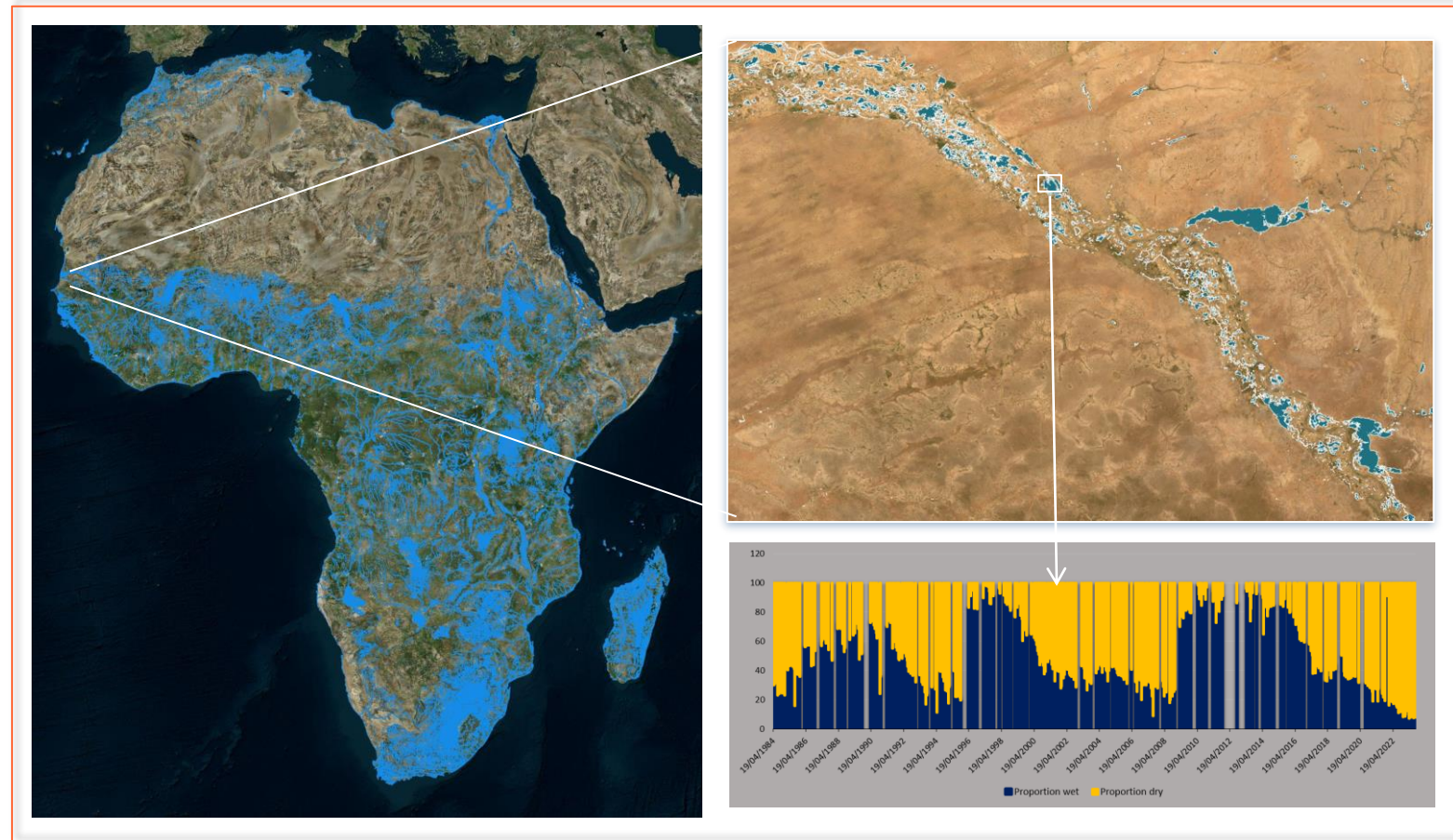
Earth observations are a critical tool for monitoring and assessing water, particularly for large, remote or inaccessible locations;

- identify surface water presence and monitor how this changes through time
- understand both short and long-term patterns of water availability due to seasonal variations, extreme climate events such as droughts and floods, and longer-term changes in climate



Water rarely detected

Water always detected





Digital Earth
AFRICA



Website digitalearthafrika.org/
Maps maps.digitalearth.africa/
Learning platform learn.digitalearthafrika.org/
User guide docs.digitalearthafrika.org/en/latest/