



PACIFIC ISLANDS FORUM



UNFCCC WIM for Loss and Damage - ExCom24

Update on the Pacific Resilience Facility

Collaboration with funding arrangements for responding to loss and damage

1 May 2026



Early PRF Treaty Ratification anticipated

- ✓ 7 Members have ratified the PRF Treaty as at 20 April 2026.
- ✓ 1 more Member deposited electronically – awaiting physical deposit.
- ✓ 2 more Members earmarked to delivery by end April-first week May.
- ✓ 8 needed to enter into force.
- ✓ Nature of 9th ratification and if new signatories sign after entry into force - accession
- ✓ 3 Members are also undertaking national domestication processes.
- ✓ Trigger correspondence to investors for pay-in of pledges

	Members	Outstanding Status as at 20 April 2026	Window
1	Niue	Conveyed ratification instrument electronically. Physical deposit being arranged.	Apr/May
2	Fiji	Parliamentary report tabled next week, with instrument to be deposited as well.	Apr/May
3	Australia	Governor General to sign. Earmarked to deposit first week May.	Apr/May
4	FSM	Endorsed for tabling to Congress. Congressional processes underway.	2Q-3Q
5	Palau	Congress has passed. Legislative processes underway.	2Q-3Q
6	Vanuatu	Cabinet Paper submitted for May Parliament tabling.	2Q-3Q
7	Samoa	Letter for routing this week for approval and dispatch	Tbc
9	Kiribati	To reconfirm Parliamentary Session timing.	Tbc
10	PNG	To reconfirm Parliamentary Session timing.	Tbc
11	New Caledonia	No updates to date	
12	French Polynesia	No updates to date	

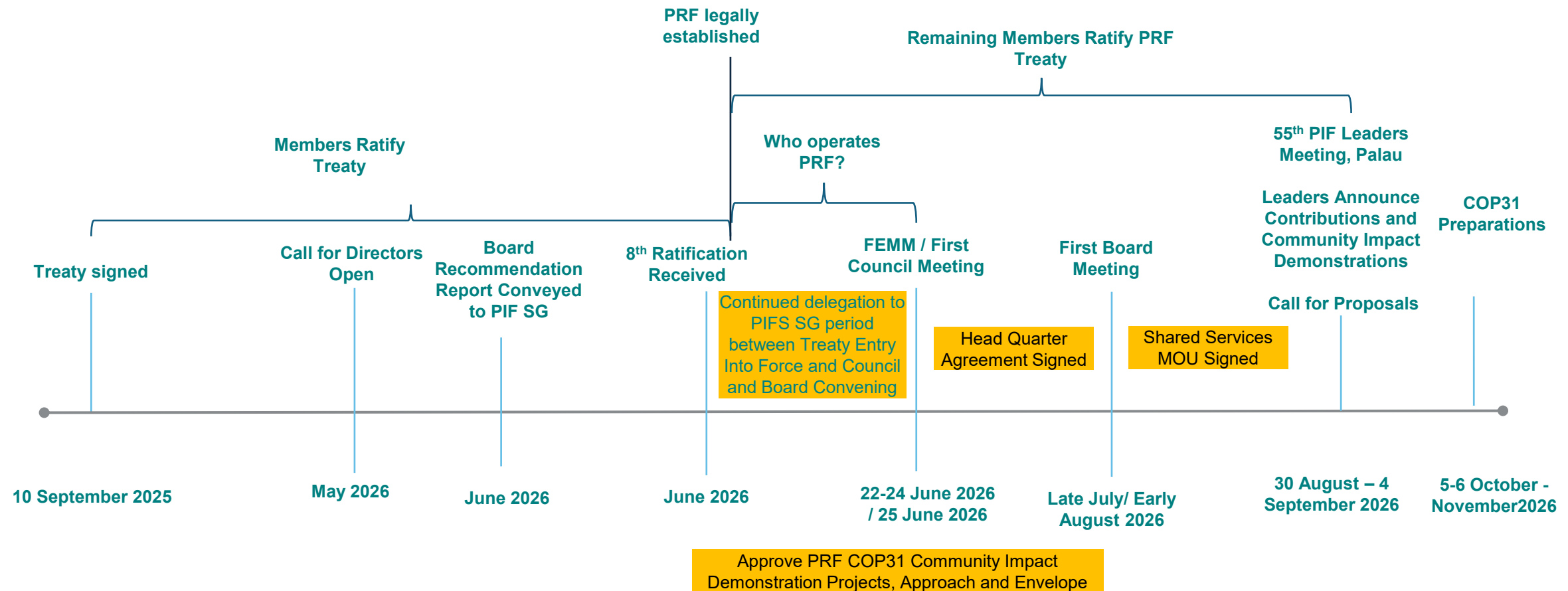


Establishment Workstreams Underway

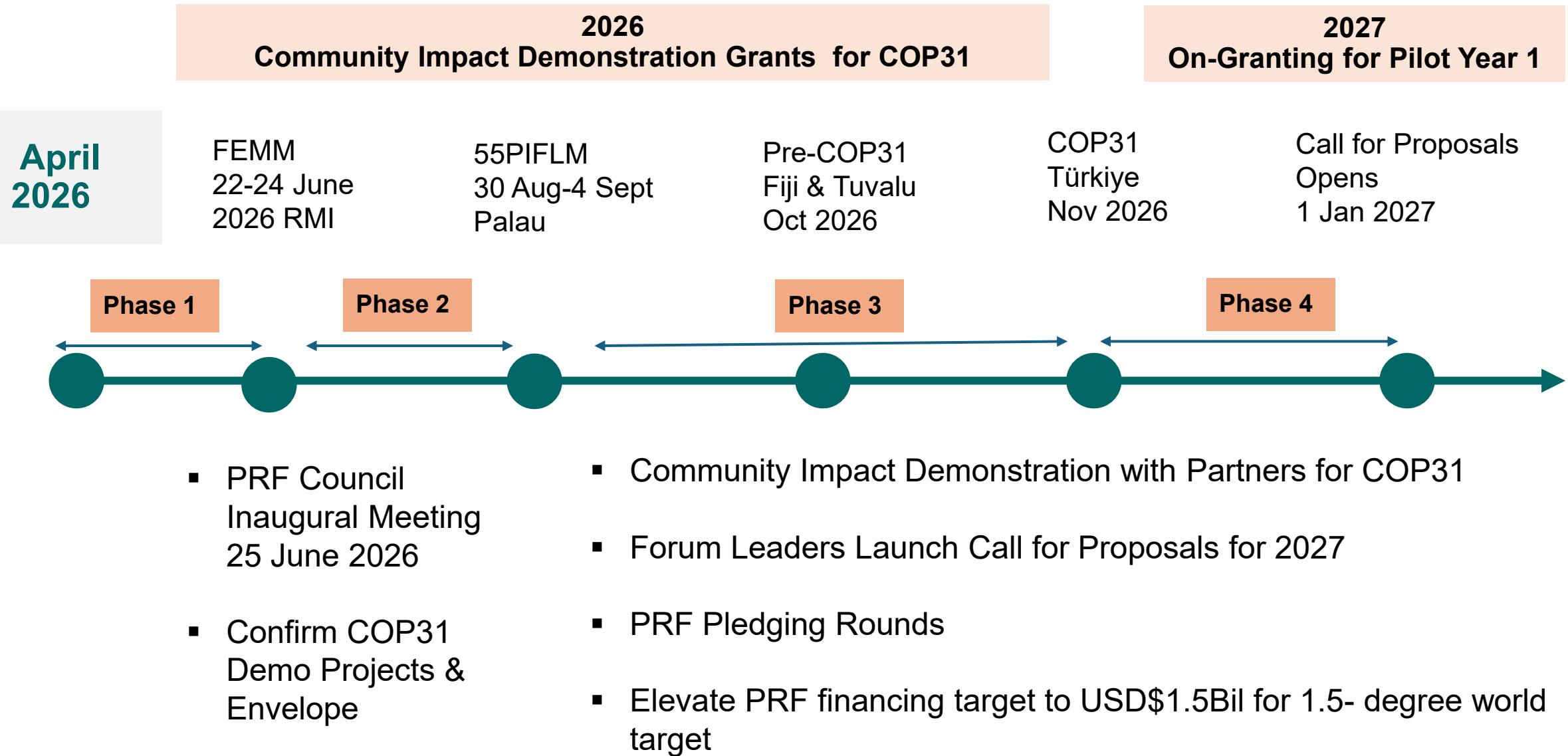
- Rules of Procedure – substantively completed
- FEMM - Council Transition – preparations underway
- Core Governance Policies + Programming & Investment Policies– being finalized
- Independent Board Selection Process - about to kick-start
- Shared Services Arrangements - being finalized with PIFS
- Office Location and Head Quarter Agreement - being finalized

PRF will transition under PIFS under existing FEMM delegation to PIFS

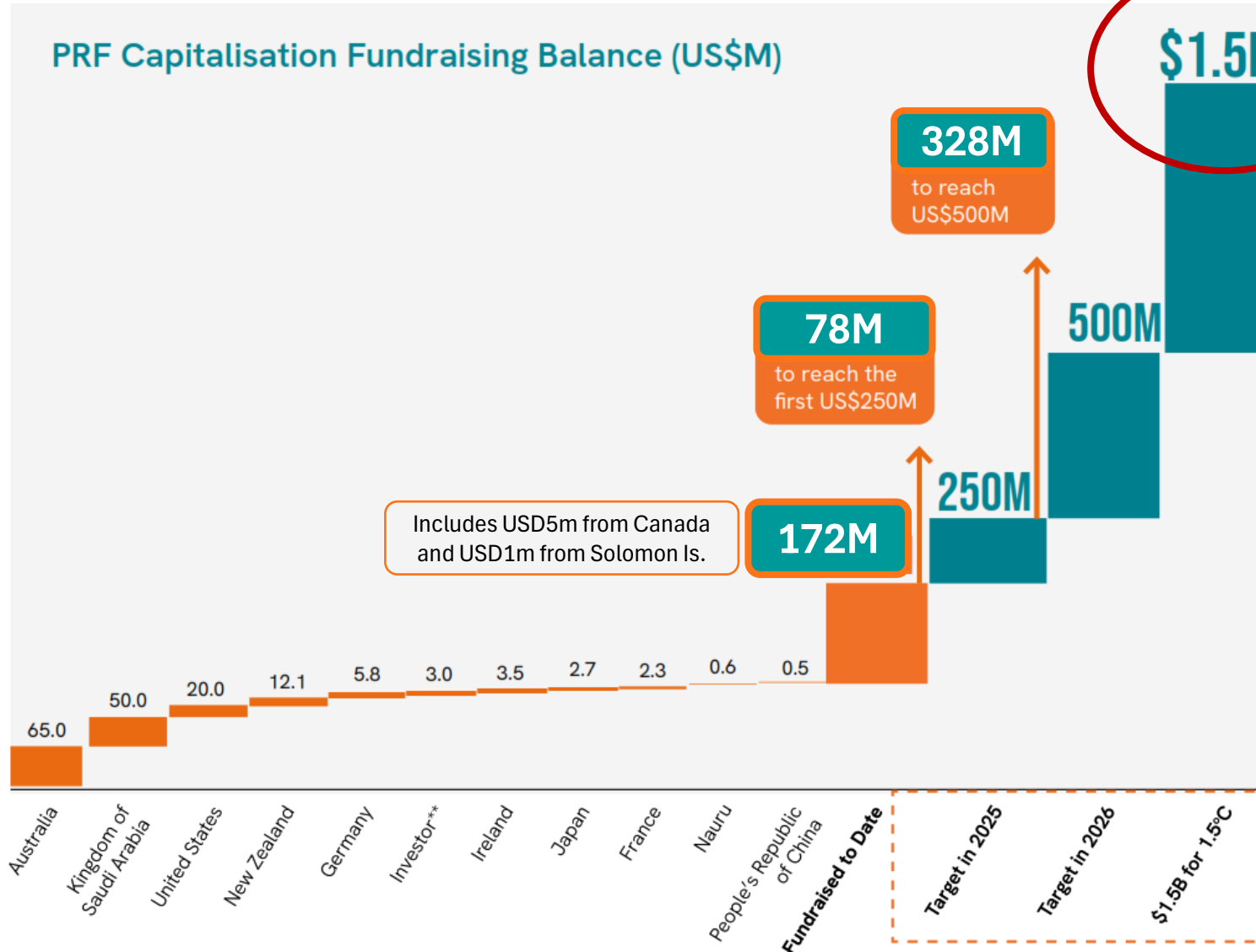
- ✓ Existing delegation from Forum Leaders to FEMM PIF Secretariat to set-up and establish PRF proposed to apply to 2-month period from May – June, then delegation thereafter.
- ✓ Transition from FEMM to PRF Council – nomination instruments to be received



PRF 4-Phase Timeline for 2026 on Pathway to COP31

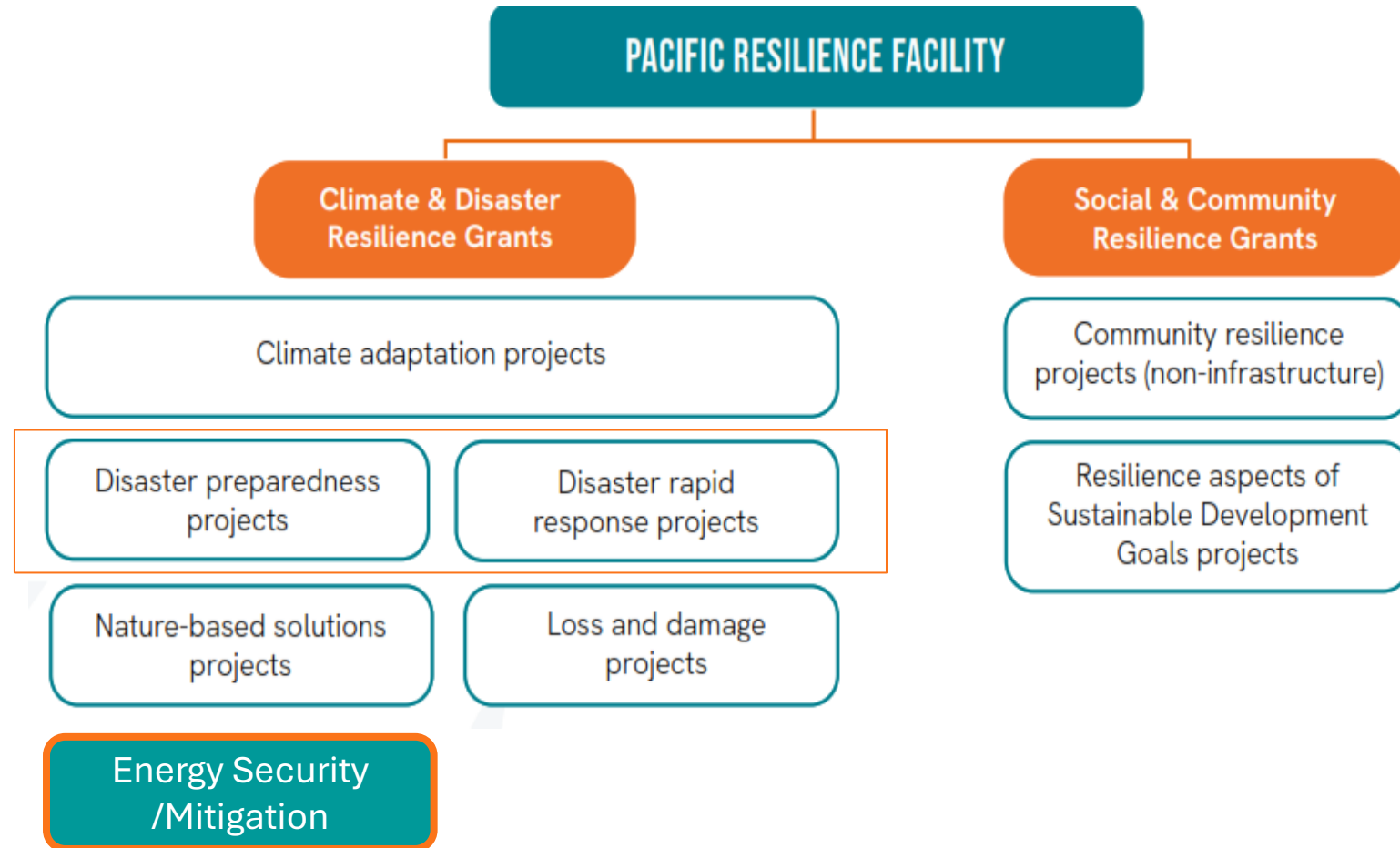


Pacific Pre-COP31 and COP31 critical opportunity to elevate to US\$1.5B for a 1.5-degree world



- Geo-political landscape necessitates a climate & energy security playbook
- Blending Sub-Fund opportunities with MDBs, MCFs & Philanthropies
- PRF and COP31 advocacy for targeted investor approach to achieve the PRF capitalisation target
- Forum Partnership Mechanism Review
- ODA Eligibility Application
- Learnings from Brazil's US\$5.5b TFFF at COP30

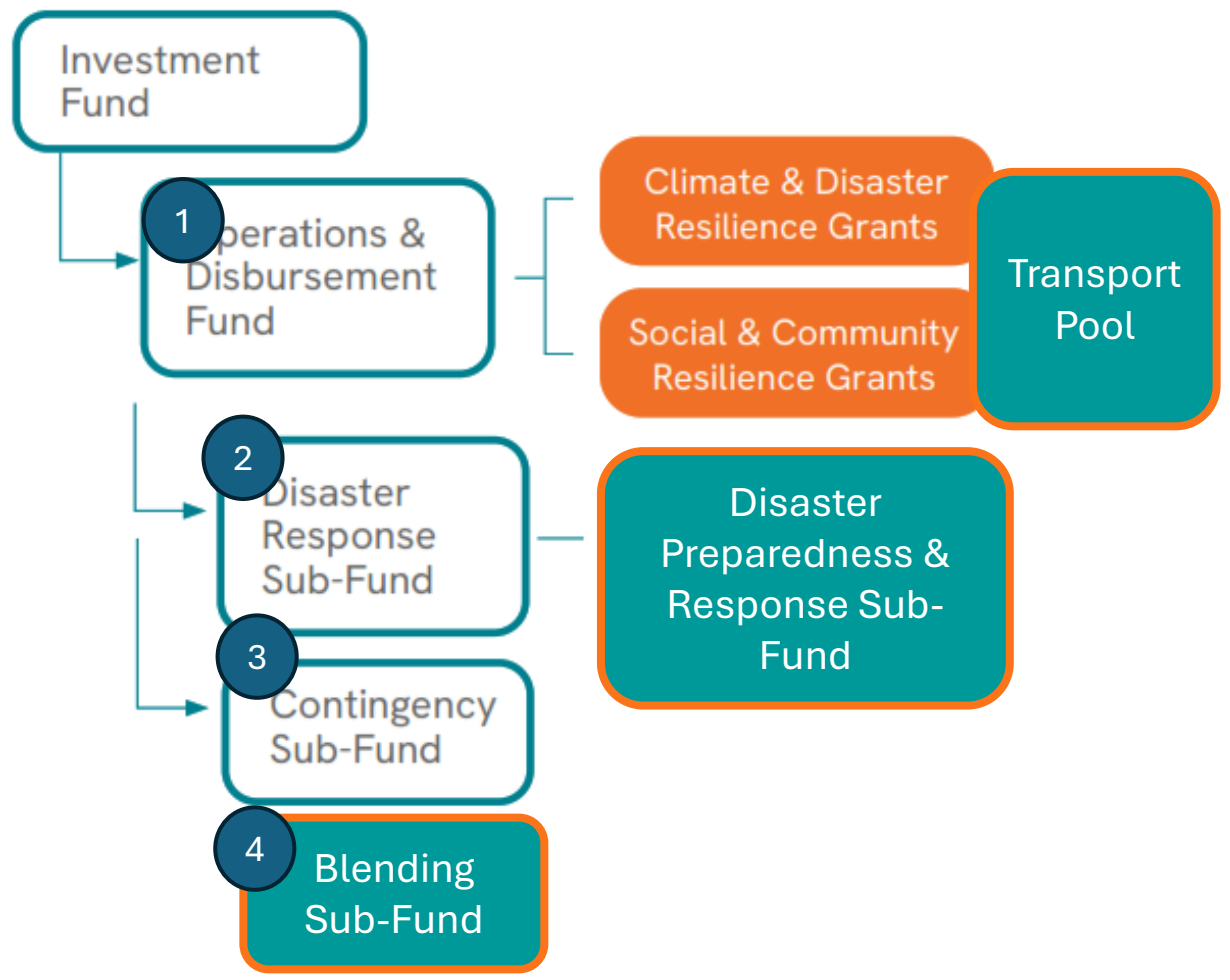
Programming Co-design underway with 7 Members Completed thus far



- Nexus between **climate adaptation, nature-based solution and loss and damage and disaster financing**, with **oceans, security, mitigation, traditional/indigenous knowledge** to meet Members and communities where they are based on our needs.
- Refinement of granting areas to underway from the **Programming Co-design process** with Members, Partners and Communities.
- **7 Members completed thus far.**

PRF Facility Structure Enhancements – Being Operationalised

- Sound Financial Principles to Secure our Communities Long-term Resilience
- Members co-contribute capital for the PRF



- 3 Enhancements supported by Members in PRF TWG in February 2026:
 - i. Consideration of a **transport pool** to offset transportation costs for remote community projects - this is proposed to come out of Australia and New Zealand’s redistributed top-up allocation
 - ii. Consolidation of disaster preparedness projects into **Disaster Preparedness & Response Sub-Fund (DPRF)**, to ring fence Disaster and Humanitarian funding
 - iii. Addition of **Blending Sub-Fund (BF)** – for ring fencing of non-sovereign sources, for intermediation of multilateral funding and global vertical funds, as well as public-private blended structures, for earmarked use of proceeds.
- Concept notes for all being finalised in April for Co-design during national consultations.

PRF is a Single Platform – Multiple Entry Point, Multi-Country Granting mechanism

Sovereign Funds

Multilateral/ Vertical Funds

Philanthropic Funds

Blended Structures

Blue and Green Levies

Sources

PRF

Modality #1: Governments

Modality #2: Partners

Communities

Uses

Disaster Response

Disaster Preparedness

Climate Adaptation

Climate Mitigation

Nature Based Solutions (Blue & Green)

Loss and Damage

Capacity and Institutional Governance Strengthening

Incremental Resilience for SDGs

Programming Co-design Updates – On-Track

- Programming Co-design Consultation Milestones
 - ✓ First PRF Programming Co-design Consultation Workshop with Members - Feb 2026
 - ✓ First Regional CSO Consultation Workshop - Mar 2026
 - ✓ National Programming Consultation has commenced – March-May 2026
 - North Pacific consultations completed
 - Melanesia almost complete
 - Central Pacific and Polynesia about to commence
 - ✓ Other Stakeholders engagements being organized for April & May:
 - Virtual Private Sector consultation kick-off
 - Small Grants Providers Talanoa – INGOs – Philanthropic funders for CSOs
 - Disaster Sub-Fund & Blending Sub-Fund Co-design Dialogue
 - Other partners

- Programming and Grant-making Policy and Procedures
 - ✓ Key outcomes for socialisation with Members, partners and investors by end April:
 - Draft Programming Policy and Procedure – drafting underway
 - National Mechanism (and Proposal, Funding, Reporting flow) mapping – underway
 - Implementation Modality 2 (via Partners) – Draft Partnership Policy, On-boarding Procedures and Pre-Accreditation Form - being drafted
 - Draft Community Grant Application Form and Proposal Template – being finalized for testing

Preliminary Community Grants Design and Packages

1

Pre-Launch COP31 Community Impact Demonstration Projects

- Tentative features – tbc and being refined further
 - Members select 1-2 small scale projects
 - Earmarked US\$10-20k allocation per Member
 - Projects to be at least 70% completed by May
 - Projects to be on track to be completed by 4Q26
 - Demonstration areas aim to showcase breadth of PRF community impact

2

55PIFLM - Launch Pilot (Event-based) Disaster Response Window

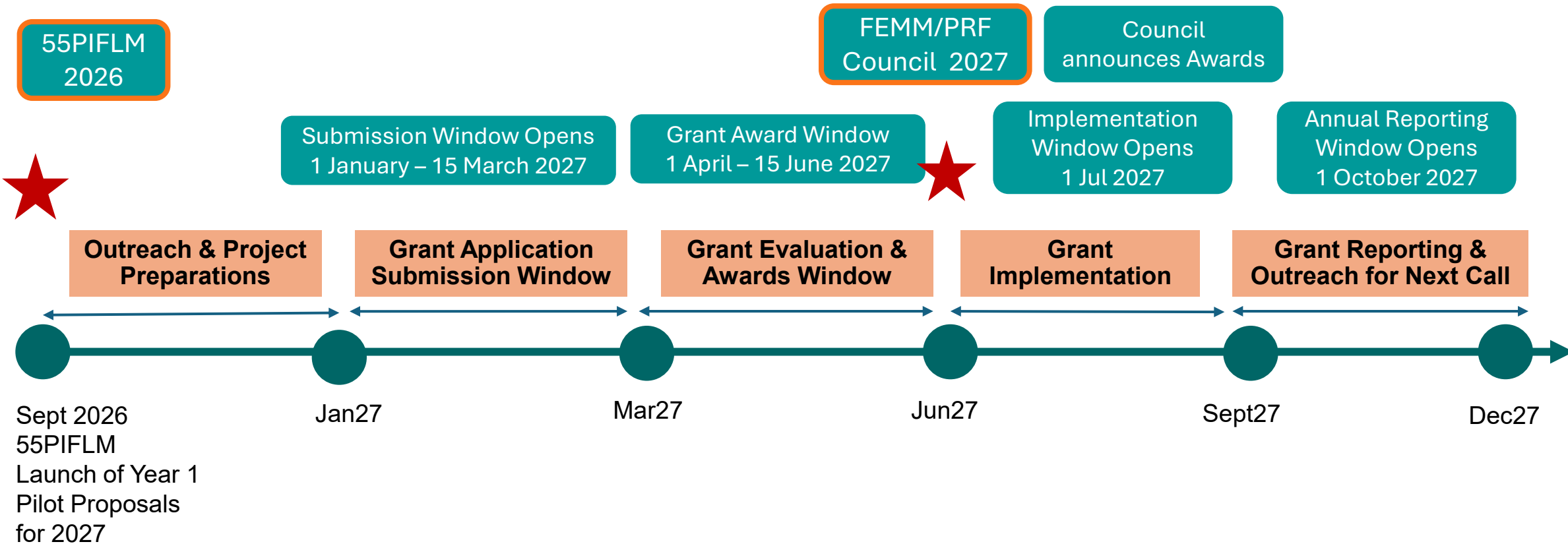
- To apply on-granting set-up funds earmarked for Disasters and Humanitarian Response
- Triggers, coverage, process and envelope being confirmed and documented
- Window to open at Pacific Pre-COP31 - October 2026 for Investors at PRF Pledging Event

3

55PIFLM - Launch Call for Community Pilot Proposals for Year 1 Pilot, 2027

- To apply on-granting set-up funds
- Triggers, coverage, process and envelope being confirmed and documented
- To launch at 55PIFLM and showcase of community proposal submissions to be at Pacific Pre-COP and COP31 for Investors at PRF Pledging Event
- Window opens on 1 January 2027, closes on 31 March, Awards by 30 June 2027

Regularization of Annual Granting Cycle for 2027 – Year 1 Pilot



3-year pilot – 2027-2029

- Year 1 of Operationalisation - 2027
- First Pilot Projects funded by On-Granting Funds
- Investment Income kicks in from 2028 onwards