

# Asia-Pacific Regional NAP Expo

## Advancing Financing and Implementation of GGA Aligned NAPs

Climate Week 3 – Yeosu, Republic of Korea  
Least Developed Countries Expert Group (LEG)





## Two objectives of the process to formulate and implement **National Adaptation Plans**



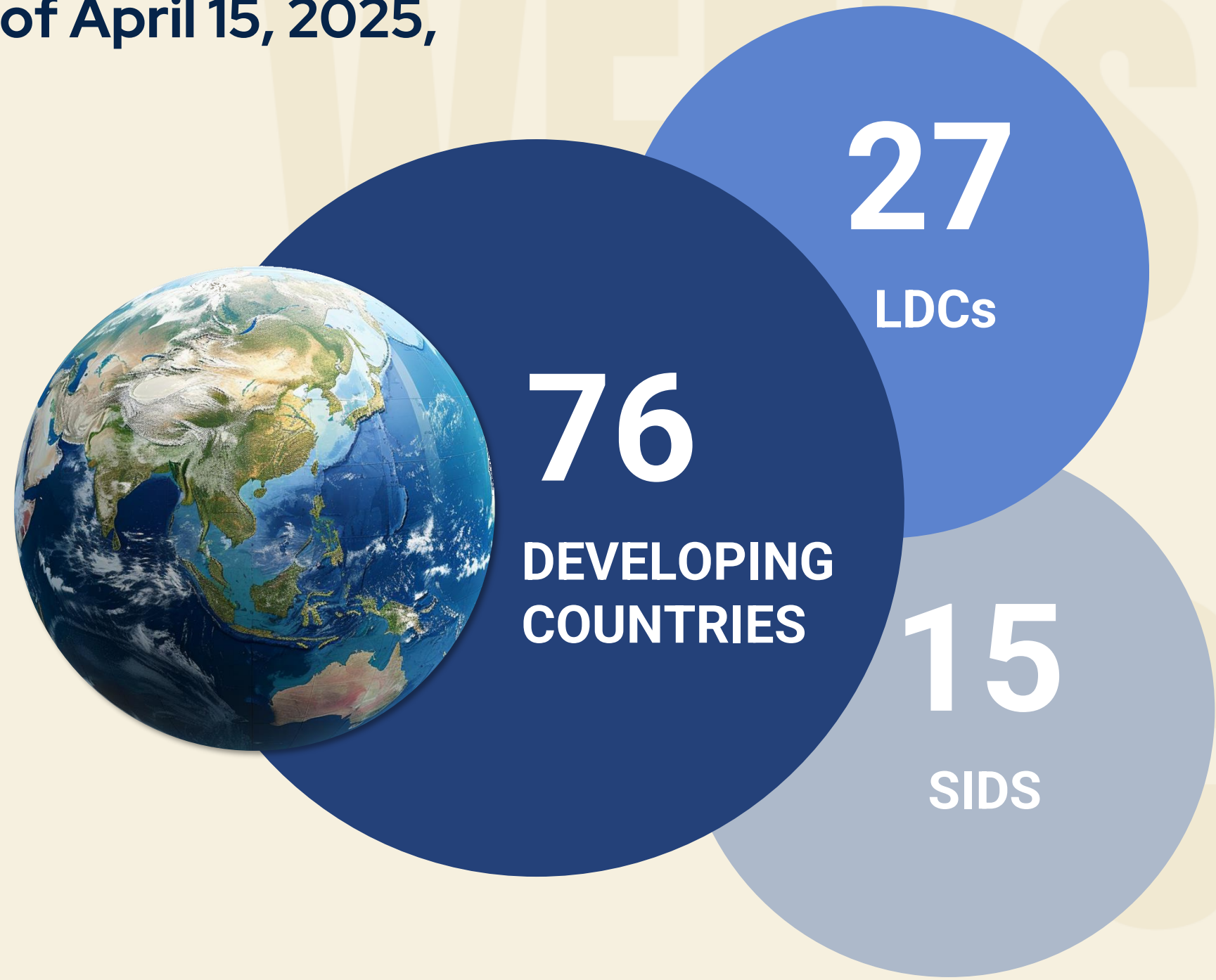
**Reduce vulnerability to the impacts of climate change by building adaptive capacity and resilience;**

**Facilitate the integration of climate change adaptation, in a coherent manner, into relevant new and existing policies, programmes and activities, in particular development planning processes and strategies, within all relevant sectors and at different levels, as appropriate.**

Decision 5/CP.17, paragraph 1

# Progress in formulating NAPs

As of April 15, 2025,



had developed and submitted their NAPs

## Asia-Pacific Region

- 28 countries in the Asia-Pacific region have submitted NAPs
- 22 from Asia, 6 from the Pacific
- Includes 7 LDCs and 7 SIDS (of which 3 are both)

12 developed countries submitted NAPs and climate adaptation strategies to the UNFCCC.

Some countries submitted sectoral NAPs

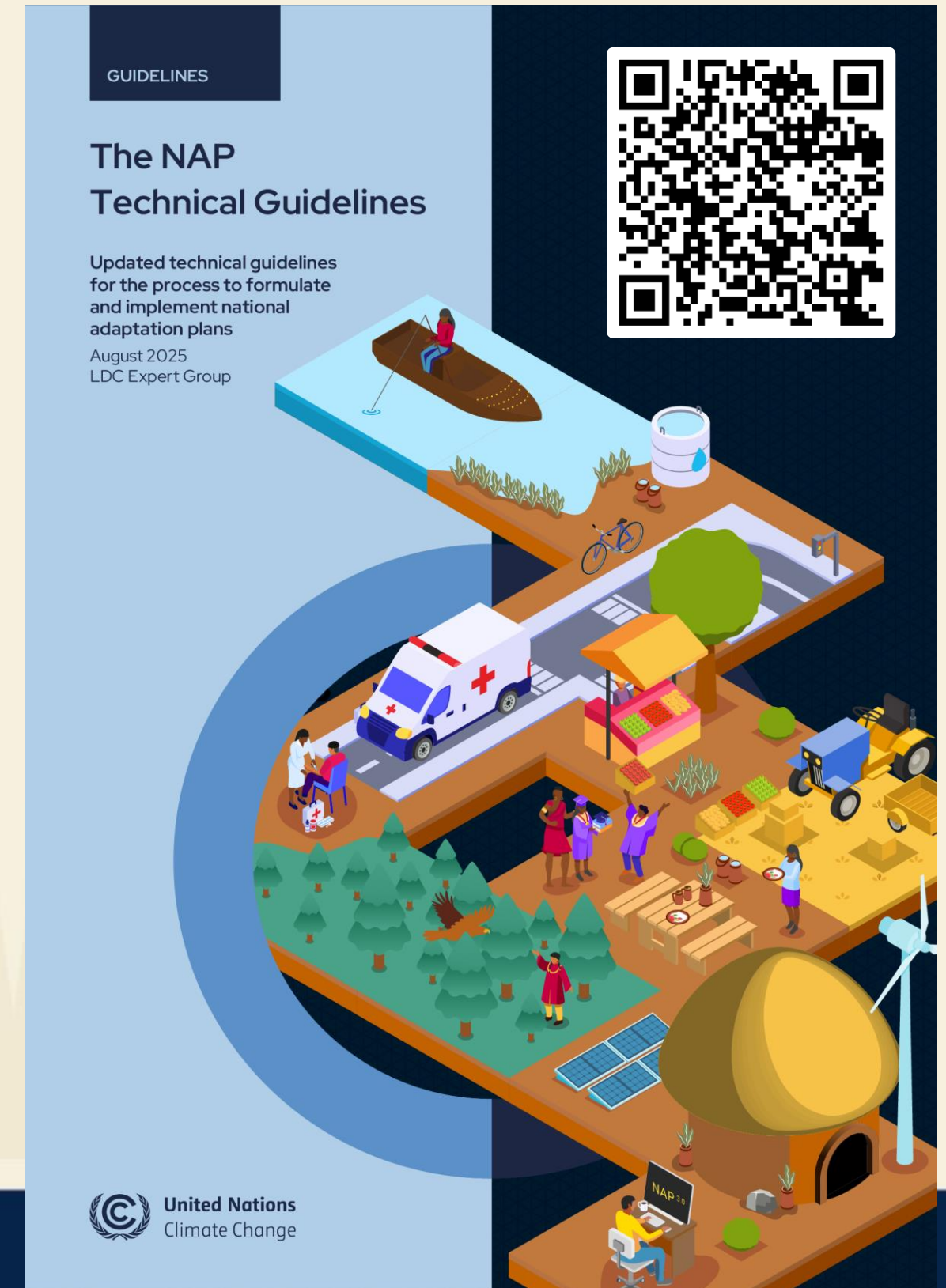
# NAPs by 2025, Implementation by 2030 – Bridging the Gap

Parties are called to **have NAPs in place by 2025** and **progress in implementing them by 2030** (decision 2/CMA.5) – NAPs are a **key channel for achieving the GGA targets**

Progress Made		Gap That Remains
<ul style="list-style-type: none"><li>• Countries have made significant progress in identifying adaptation priorities through NAPs</li><li>• Many now have documented sectoral and subnational priorities, vulnerability assessments, and alignment with national development goals</li></ul>	 <p><b>The Regional NAP Expo is designed to work through this disconnect through six technical sessions</b></p>	<ul style="list-style-type: none"><li>• Priorities are not yet translating into project pipelines, programmatic frameworks, or adaptation portfolios that financing actors can engage with</li><li>• The result is a persistent disconnect between what NAPs say and what gets funded and implemented</li></ul>

# Applying the Updated UNFCCC NAP Technical Guidelines

- **NAPs as the overall adaptation strategy** and policy anchor for the whole of society
- Aggregating sectoral, subnational, and local priorities into **actionable and investable policies, programmes, and projects**
- Stronger emphasis on **implementation strategy, financing,** and structuring **investment ready** action
- **Aligned with GGA Framework targets** and informed by the IPCC AR6 **best available science**
- Managing both **climate risk and adaptation benefits** as complementary approaches

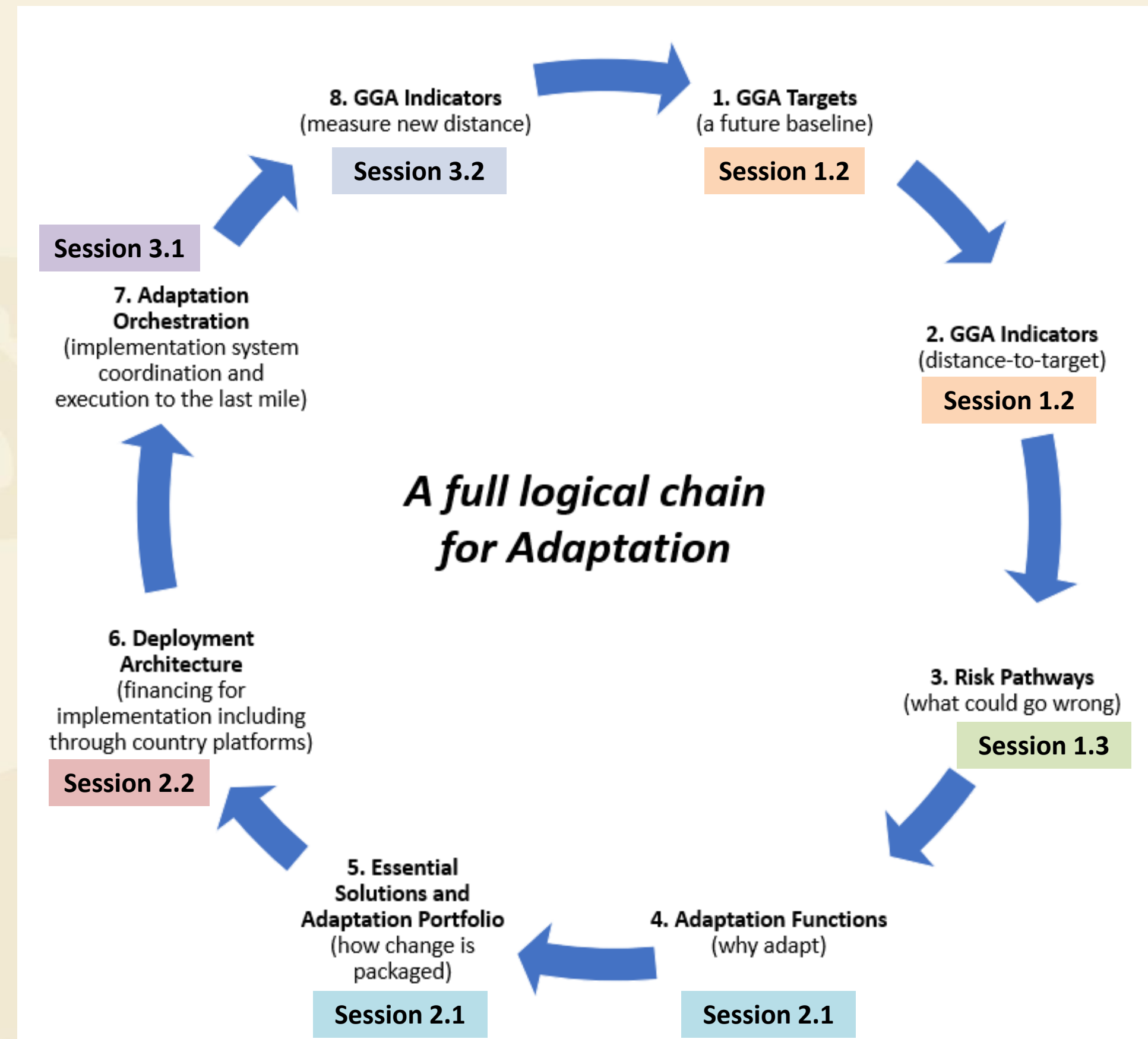


# From GGA Framework Targets to Implementation

1. **GGA framework targets** set the destination
2. **Belém Adaptation indicators** measure the distance
3. **Risk pathways** reveal what could go wrong
4. **Adaptation functions** address systemic consequences
5. **Solutions** define how to package intervention
6. **Adaptation portfolio** is the mix of programmes, projects, and readiness needed to achieve results
7. **Deployment architecture** finances implementation
8. **Orchestration** coordinates delivery and execution
9. **MEL using the Belém Adaptation indicators** closes the chain by measuring new distance

# Regional NAP Expo – Six Technical Sessions

1. **GGA framework targets and indicators** set the destination (1.2)
2. **Risk pathways** reveal what stands in the way (1.3)
3. **Adaptation functions** connects risk to the rationale for action through NAPs to produce **concrete adaptation solutions** (2.1)
4. **Deployment architecture** shows how to finance and structure that action (2.2)
5. **Adaptation orchestration** ensures it is coordinated and delivered (3.1)
6. **National MEL systems** track progress and feed learning into the next iteration (3.2)



# Regional NAP Expo – Programme Overview

 Day 1 – Tuesday, 21 April 2026

 Day 2 – Wednesday, 22 April 2026

 Day 3 – Saturday, 25 April 2026

**Session 1.1**  
Organizer: LDC Expert Group  
**Opening of Regional NAP Expo**



 Tue, 21 April 2026 | 14:00 – 14:30

**Session 1.2**  
Organizer: UNFCCC Secretariat  
**GGA Targets and Indicators**



 Tue, 21 April 2026 | 14:30 – 15:30

**Session 1.3**  
Organizer: LDC Expert Group  
**From Risk to Response:  
Applying Risk Pathways in NAPs**



 Tue, 21 April 2026 | 16:00 – 18:00

**Session 2.1**  
Organizer: LDC Expert Group  
**Why Adapt? Using NAPs  
to Achieve the GGA**



 Wed, 22 April 2026 | 14:00 – 15:30

**Session 2.2**  
Organizer: LDC Expert Group  
**Deployment Architecture  
(Financing for Implementation)**



 Wed, 22 April 2026 | 16:00 – 18:00

**Session 3.1**  
Organizer: LDC Expert Group  
**Adaptation Orchestration  
(Implementation System Coordination  
and Execution to the Last Mile)**



 Sat, 25 April 2026 | 14:00 – 15:30

**Session 3.2**  
Organizer: AC, UNFCCC Secretariat  
**Translating GGA Indicators  
into National MEL Systems**



 Sat, 25 April 2026 | 16:00 – 17:30

**Session 3.3**  
Organizer: LDC Expert Group  
**Closing of Regional NAP Expo**



 Sat, 25 April 2026 | 17:30 – 18:00

## Tuesday, 21 April: GGA Targets, Indicators, and Risk Pathways

- **Session 1.2** introduces the UAE Framework for Global Climate Resilience and its thematic and dimensional targets.
  - ❑ Positions targets and 59 Belém Adaptation Indicators as the starting point in the logical chain for adaptation
- **Session 1.3** moves into risk pathways, tracing how climate hazards materialize into systemic consequences across GGA thematic areas
  - ❑ Participants will build risk pathways through hands on group exercises

## Wednesday, 22 April: Why Adapt and How to Finance It

- **Session 2.1** explores why adaptation is essential and how the GGA Framework can be operationalized through NAPs
  - ❑ Draws on both risk and benefits approaches from the UNFCCC NAP Technical Guidelines and breaks down the targets into components and adaptation priorities
- **Session 2.2** brings together country participants and support providers (climate funds, UN organizations, MDBs etc)
  - ❑ Café format to develop adaptation portfolio propositions and generate concrete commitments

## Saturday, 25 April: Coordination, MEL, and Closing

- **Session 3.1** focuses on adaptation orchestration – coordinating across ministries, local governments, climate funds, donors, and the private sector.
  - ❑ Participants will develop a phased NAP implementation plan through group exercises while noting the importance of coordination for effective delivery
  
- **Session 3.2** explores how Belém adaptation indicators can be operationalized through national MEL systems
  - ❑ Peer learning from national MEL systems aligning with the indicators

**The Regional NAP Expo closes with reflections and key messages from the LEG**

# Interactive and Peer Driven



All sessions are **designed around active participation**



**Formats** include group exercises, guided pathway building, World Café rotations, live polling via Mentimeter, and plenary discussions



A space for **peer exchange** among governments, UN organizations, philanthropy, and private sector actors, and researchers



Participants are encouraged to bring their own **country contexts** and challenges into every exercise

# Expected Outcomes

- 1 Increased uptake of the latest NAP guidance, including the Updated UNFCCC NAP Technical Guidelines (2025)
- 2 A stronger focus on implementation, financing, and the organization of adaptation priorities into actionable pathways
- 3 Practical tools and frameworks applied during the sessions (risk pathways, adaptation portfolio, coordination mapping, MEL integration)
- 4 Concrete follow up actions and partnership opportunities to pursue

## Logistics

- **Venue:** Venezia Hotel, Burano Hall (3<sup>rd</sup> Floor), MR3
- All sessions take place in the same room
- Sessions run from **14:00 to 18:00** each day with a break from **15:30 to 16:00**
- Materials and templates will be provided at relevant sessions

**Regional NAP Expo: Advancing financing  
and implementation of GGA-aligned NAPs –  
Details and presentations:**



## Contact Details & Key Links

### Least Developed Countries Expert Group (LEG)

E-mail: [leghelp@unfccc.int](mailto:leghelp@unfccc.int)

### Important links

- ❑ LEG: <http://unfccc.int/LEG>
- ❑ NAP Central: <https://napcentral.org>