



Regional workshop on gender integration into national climate actions in
Europe and Central Asia



Ministerul Agriculturii,
Dezvoltării Regionale
și Mediului

Institutionalisation of gender mainstreaming into climate planning and action in the Republic of Moldova

Ala Druta
Ministry of Agriculture, Regional Development and Environment
Republic of Moldova

2 September 2020

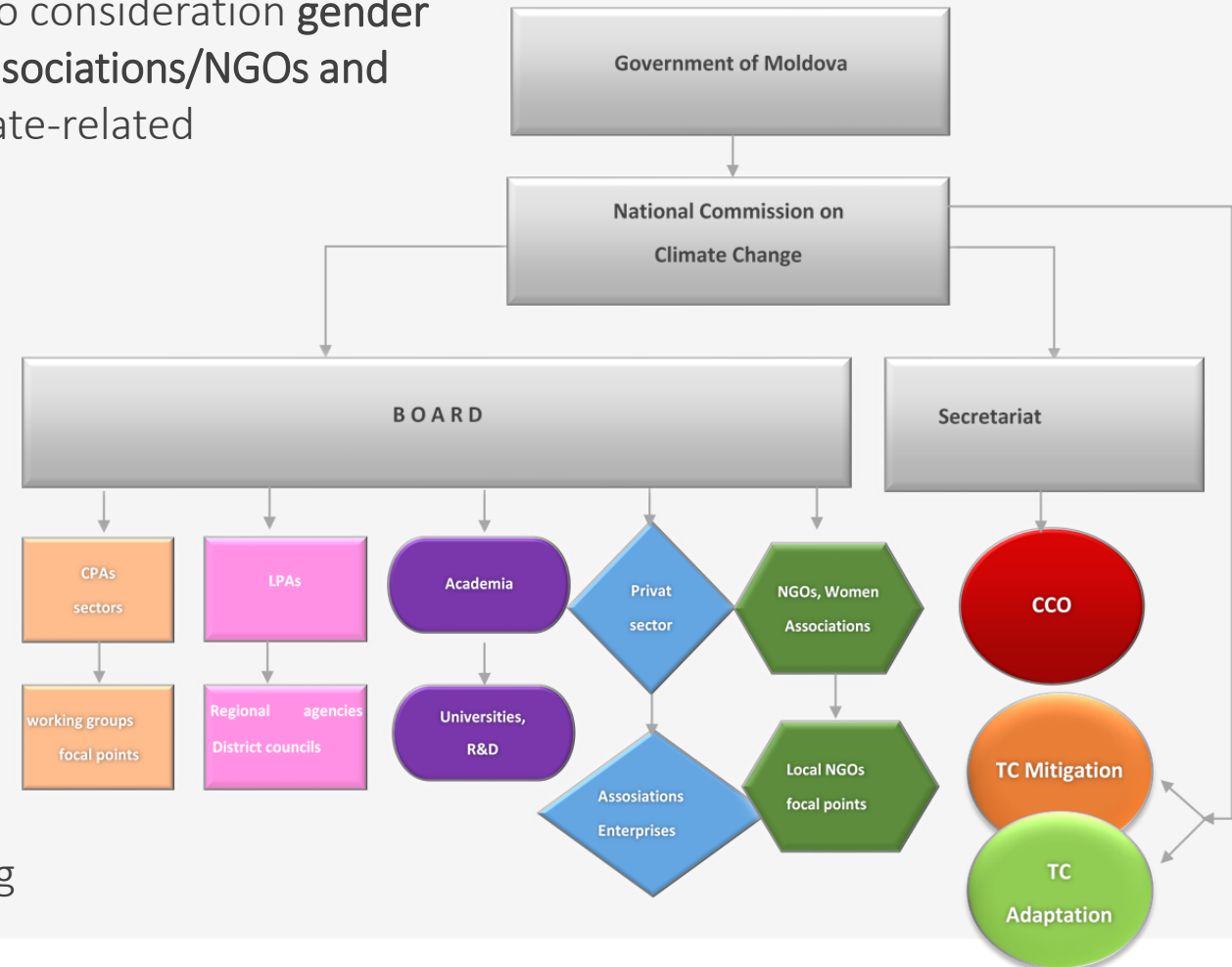
Institutional arrangements with regard to gender mainstreaming into climate framework of Moldova



The *National Commission on Climate Change* - a permanent formalized decision-making body with the highest representation of key stakeholders: sectorial ministries, LPAs, NGOs, academia, research, private sector, taking into consideration **gender dimension through including representatives of Women Associations/NGOs and considering gender equality and social inclusion** in all climate-related components: adaptation, GHG emissions and mitigation.

The NCCC applies a cross-sectoral **multi-stakeholder Coordination Mechanism** to maintain a gender balanced sustainable institutional arrangement, operationalised through the Government Decision nr. 444 of 01.07.2020

Institutional partnership between **Ministry of Agriculture, Regional Development and Environment** and **Ministry of Health, Labour and Social Protection** supporting gender mainstreaming process .



Gender mainstreaming into climate – related policy framework of Republic of Moldova

Moldova 's accession to the **2030 Agenda** and the nationalisation of SDG goals , including SDG 5 Gender equality and SDG 13 Climate Action - 2015.

Law No. 5 on Equality of Opportunities for Men and Women - 2006.

Strategy for ensuring equality between women and men in the Republic of Moldova for the years 2017-2021 and of the Action Plan (GD Nr 259 of 28.04.2017). Dedicated area of intervention: *climate change offers new opportunities in accelerating actions regarding the transition from gender equality of de jure to de facto gender equality, including the connection of gender equality with climate change.*

Updated *Republic of Moldova Nationally Determined Contribution* - gender equality and social inclusion mainstreamed into both adaptation and mitigation components – 2020

NAP1 (2013-2017) - mainstreaming gender dimension into national and sectorial adaption planning process.

NAP2 (2020-2024)- gender-responsive climate change adaptation process

Ag.SAP (2020-2023)- mainstreaming adaptation into planning processes to reduce vulnerability to climate change at local and central levels in Moldova's agriculture sector.

National Climate Change Adaptation Strategy (2014-2020) to be updated as a gender-responsive climate adaptation policy document.

Updated gender-sensitive *Low Emission Development Strategy (2050)* and its associated implementation guide -under development.



Institutionalisation of climate and gender mainstreaming into subnational development planning

- Gender analysis and incorporation of gender perspectives into climate change capacity assessment sectorial reports of energy, transport, forest, health, agriculture, water, and regional development sectors;
- Gender mainstreaming into sectoral development policies, along with its incorporation into adaptation measures of sectoral development planning;
- Capacity development on gender mainstreaming at sector and national levels during climate impact, risks and vulnerability assessments;
- Gender analysis and incorporation of gender dimension into sub-national level socio-economic development strategies and their implementation Action Plan at district level;
- Development of information and guiding materials on gender mainstreaming into climate sectorial planning;
- Development of gender – responsive programming of climate investments priorities .



Institutionalisation of gender-mainstreaming at project /programme level

Institutionalisation of gender-mainstreaming by the climate project team results into:

- gender balanced composition and enhanced expertise at the project level, including project Steering Committee,
- better outcomes and outputs at the project level,
- women active participation and leadership in project's activities ,
- better promotion of social inclusiveness in climate-related process,
- a gender sensitive portfolio of climate-related project ideas and project proposals,
- Gender Analysis produced for large –scale climate interventions of GCF, GEF, AF, EU, other donors
- empowerment and engagement of women in adopting climate technologies.



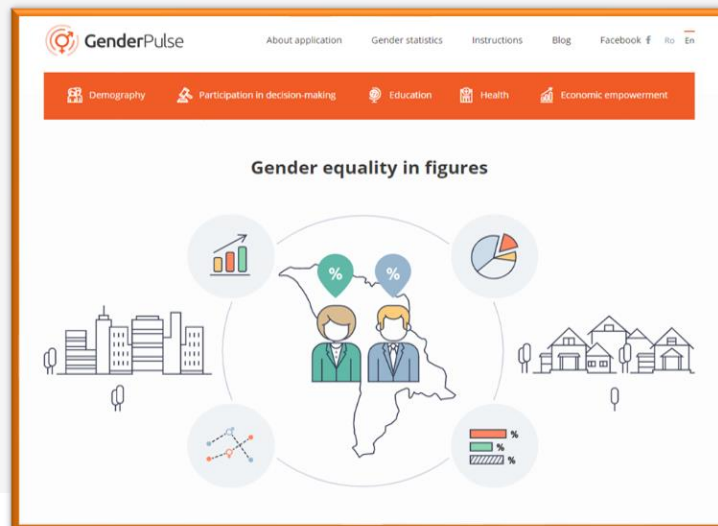
Institutional set up of gender disaggregated data collection and analysis

Mainstreaming gender into the operation of National Bureau of Statistics for gender disaggregated data collection www.statistica.md

Gender sensitive M&E (adaptation) and MRV (GHG emissions) systems under development (MARDE)

Creation of specialized database on gender GenderPulse (MHLSP) www.genderpulse.md and on climate data collection www.portal.clima.md (MARDE)

Gender budgeting and Climate Budget Tracking procedures under approval (MARDE, MF).



Thank you for attention.

Contacts: clima@clima.md
drutaala@gmail.com