



Ministry of Climate
and Energy

2023 CLIMATE CHANGE CONFERENCE
SESSIONS OF THE SUBSIDIARY BODIES

MULTILATERAL ASSESSMENT - LATVIA

Ph.D. LĪGA KUREVSKA | STATE SECRETARY
CLIMATE AND ENERGY MINISTRY

LATVIA

SNAPSHOT IN NUMBERS



AREA

64 569 km²



POPULATION

1.9 million



GDP PER CAPITA (2021)

38'024 EUR



GHG EMISSIONS (2021)

10 738.12 kt CO₂ eq

0.3% of EU total



Latvia is among the most densely forested countries in Europe (~ 52%)

Latvia has one of the lowest population density in Europe

TOWARDS CLIMATE NEUTRALITY 2050

LATVIA'S EMISSION REDUCTION COMMITMENTS

Convention (until 2020)
Kyoto Protocol (CP2) (2013-2020)

Paris Agreement NDC (2021 - 2030)



JOINT EU
TARGET:
2020 VS 1990

-20%



JOINT EU
TARGET:
2030 VS 1990

-55%

EU
NON-ETS
VS 2005

-10%

EU ETS
VS 2005

-21%

EU
NON-ETS
VS 2005

-40%

EU ETS
VS 2005

-62%



LV NON-ETS
VS 2005

+17%

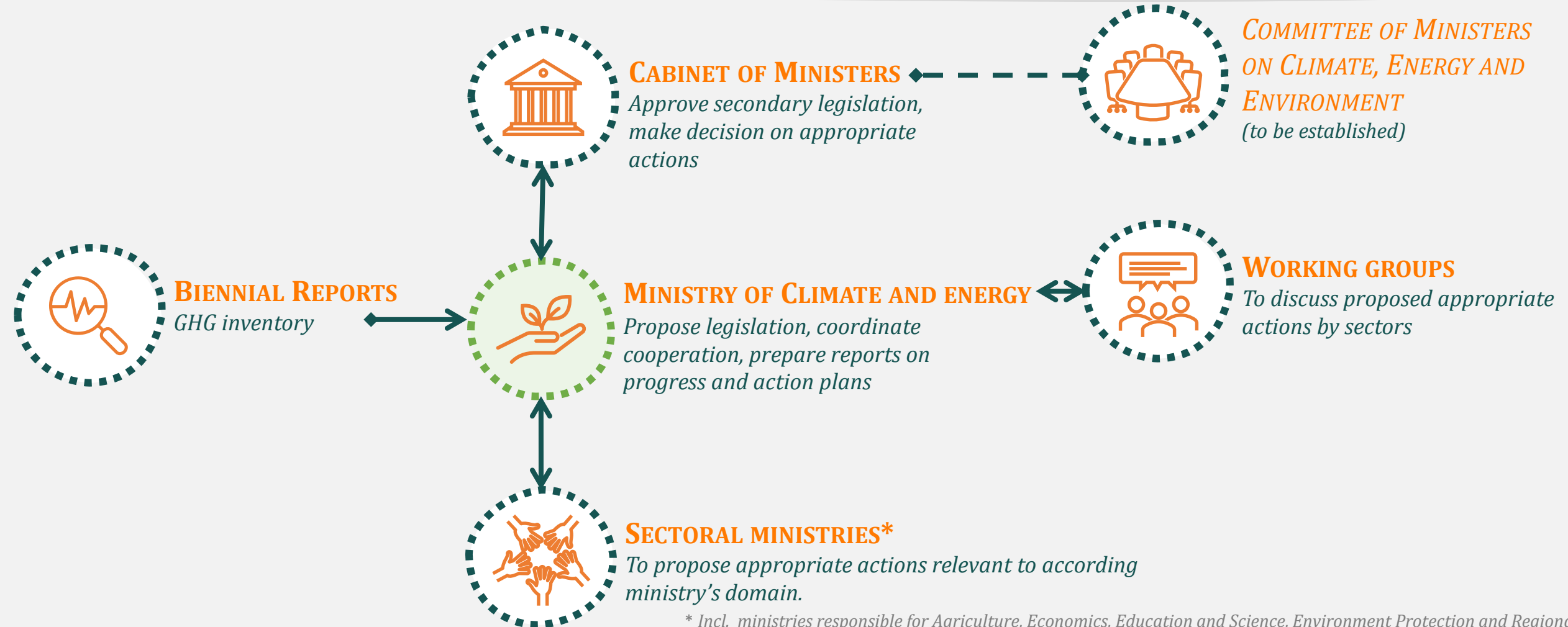


LV NON-ETS
VS 2005

-17%

INSTITUTIONAL FRAMEWORK FOR CLIMATE POLICY

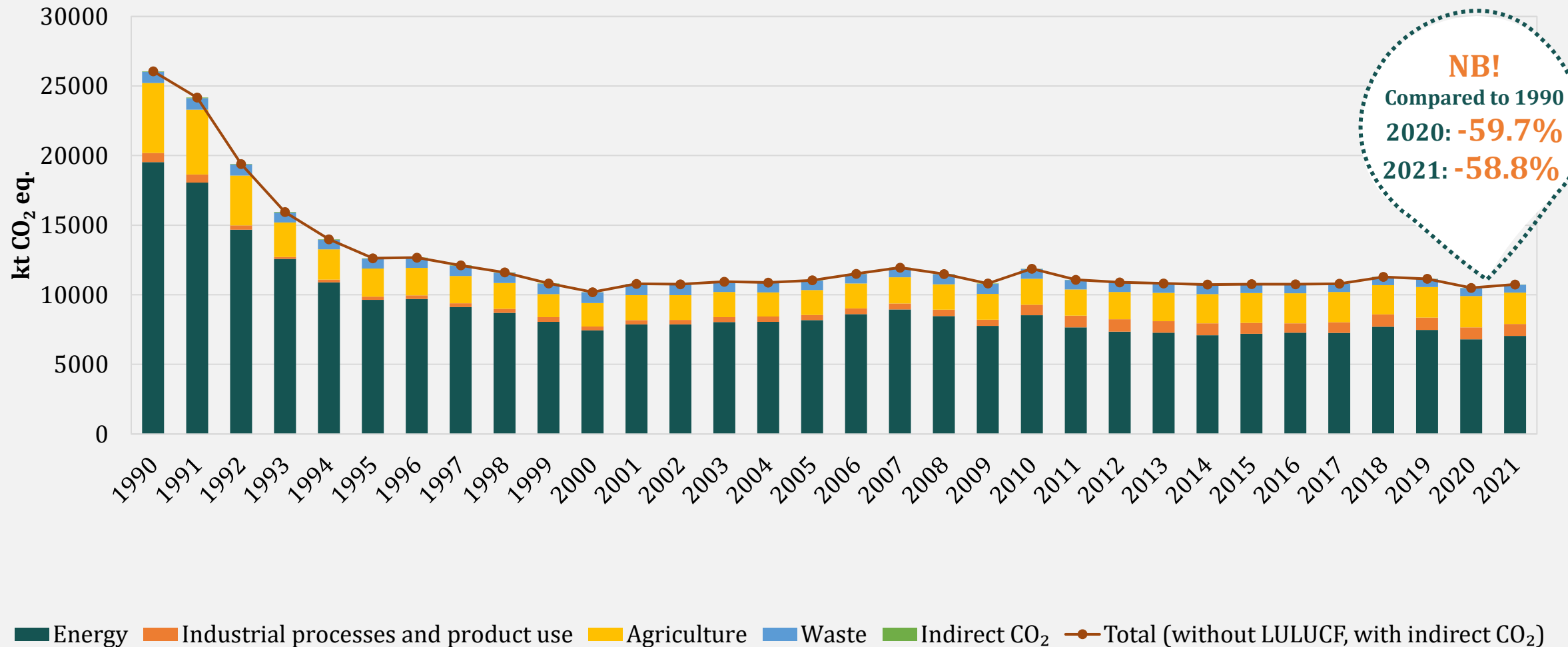
Policy framework: Law on Pollution → Climate Law | Climate Neutrality Strategy by 2050 | National Energy and Climate Plan 2030



* Incl. ministries responsible for Agriculture, Economics, Education and Science, Environment Protection and Regional Development, Finance, Foreign Affairs, Health, Internal Affairs, Transportation

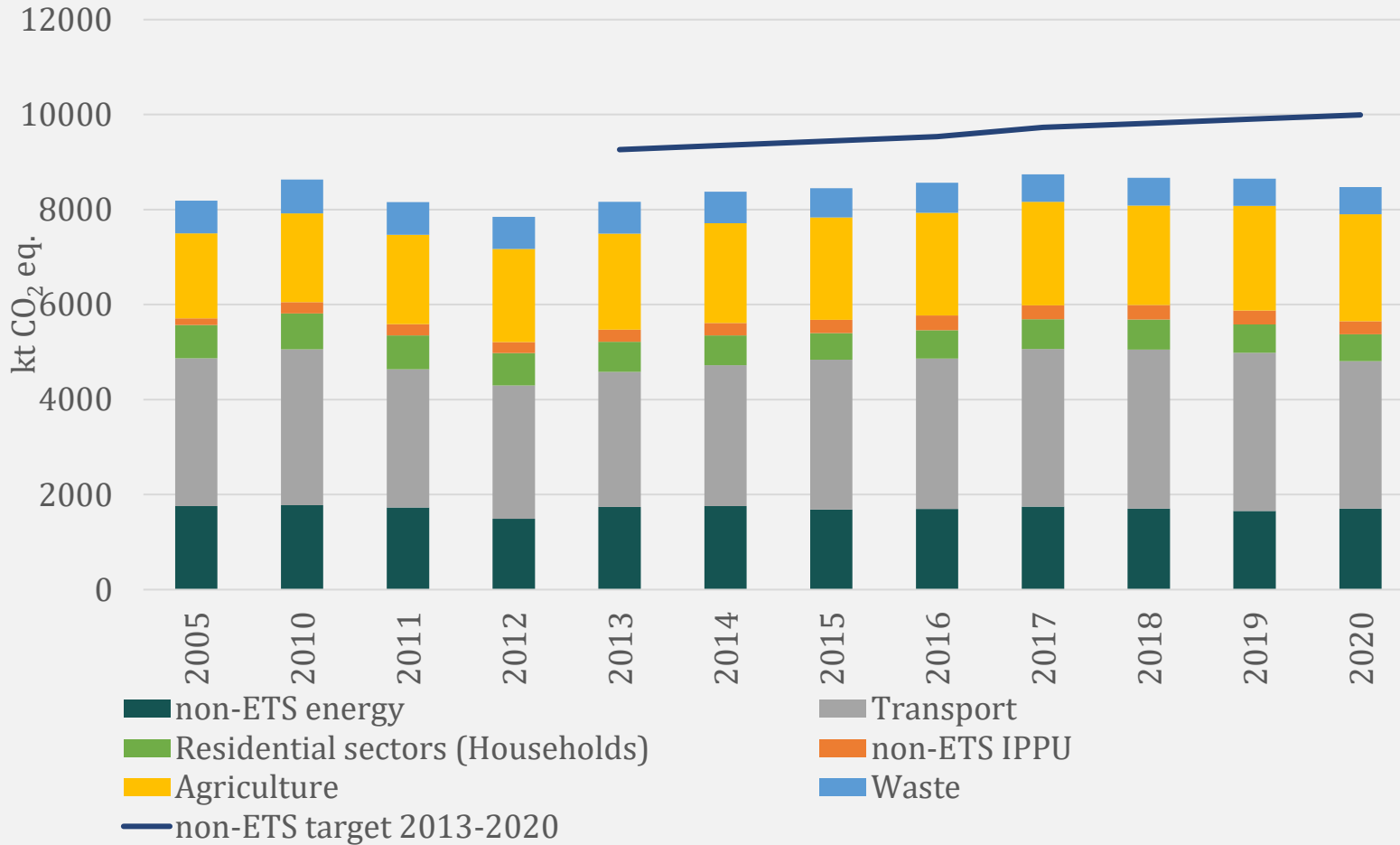
LATVIA'S GHG EMISSIONS BY SECTORS

(kt CO₂ eq.)




LATVIA OUTPERFORMED

2020 GHG EMISSION TARGET

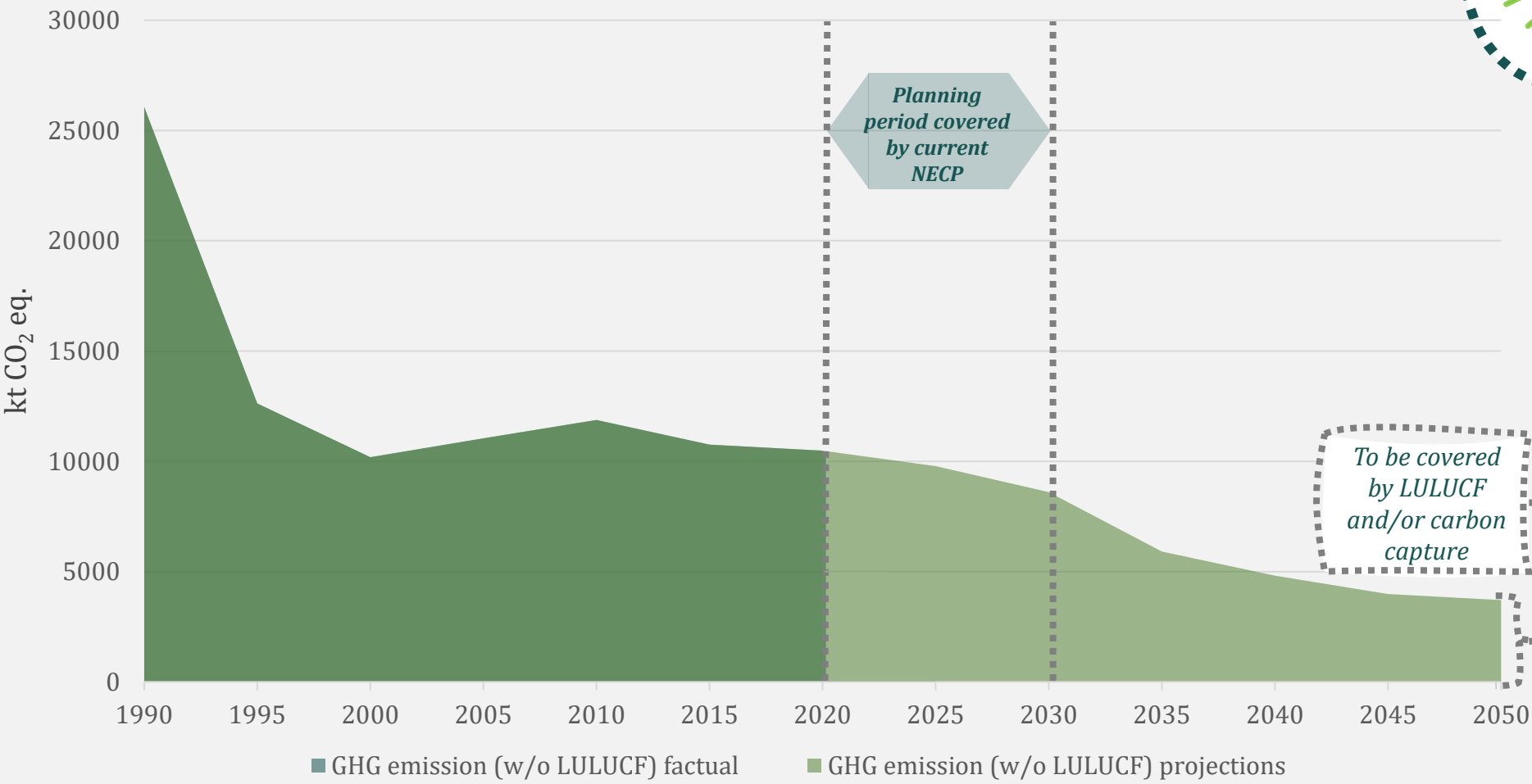


 The EU 2020 target -20% has been **overachieved**
 EU GHG 2020 vs 1990: **-34%**

 LV outperformed set target of no increase in GHG no more than **+17%**
 LV GHG 2020 vs 2005: **+4.3%**

GHG PROJECTIONS

TOWARDS CLIMATE NEUTRALITY

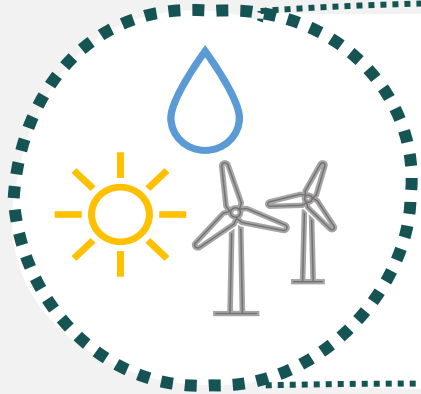


Ministry of Climate and Energy is preparing updated National Energy and Climate plan for 2030.

Latvian public and private sectors are determined to work towards common objectives to reach 2030 target for GHG emission reductions and climate neutrality until 2050

To be covered by LULUCF and/or carbon capture

GHG EMISSION REDUCTION POLICIES AND MEASURES



RENEWABLE ENERGY SOURCES
support programmes for transition to renewables (e.g. solar, biomass, heat pumps) for industry, district & individual heating



ENERGY EFFICIENCY
support programmes for increasing of energy efficiency in individual and multi-apartment buildings, industry and heating, energy auditing & energy certification obligations schemes

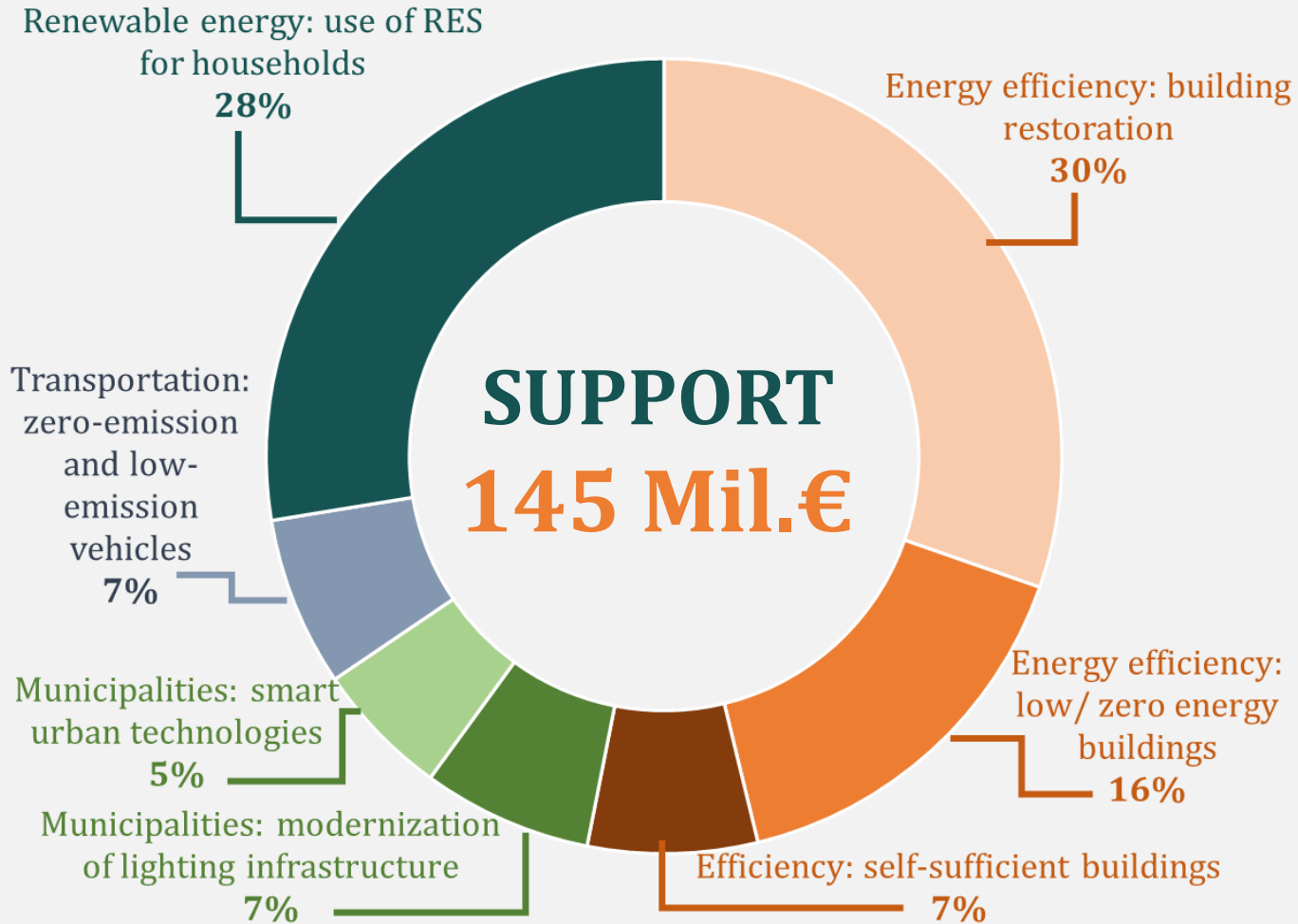


TRANSPORT
support programmes to promote electric vehicles and charging infrastructure, mandatory biofuels blending, public procurement for clean vehicles, Greening transport in the Riga metropolitan area



CROSS SECTORAL PAMS
fiscal instruments (CO₂ tax in synergy with air polluting emissions taxation), public information and education programs.

EMISSION ALLOWANCE AUCTIONING INSTRUMENT FINANCIAL AID TOWARDS CLIMATE NEUTRALITY



Targeted budgetary programme for
GHG reduction and adaption to
climate change
Support schemes available since 2016



More than **10 000** successful
projects financed

LESSONS LEARNED

ACHIEVEMENTS AND CHALLENGES

59% GHG reductions between 1990 and 2021

3rd highest share of renewables in the final consumption in EU (2021)

4th lowest emission intensity of electricity generation in EU (2022)

20x 20-fold increase in installed capacity for solar panels between 2021 and 2023



ACHIEVEMENTS



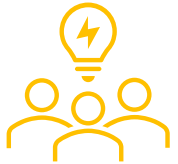
CHALLENGES

Significant share of current GHG emissions are in **slow-to-adjust sectors** such as transport.

Latvia has **high share of organic soils** which presents challenges both to LULUCF and agriculture sectors

Housing stock is old and has **low energy efficiency**. Renovation pace limited by available workforce and/or materials.

FEEDBACK ON INTERNATIONAL ASSESSMENT AND REVIEW PROCESS



GOOD
CO-OPERATION
WITH THE REVIEW
TEAM



BENEFICIAL
IMPROVEMENTS
OF THE REPORT



FACILITATES
EXPERIENCE
SHARING AND
BUILDS CAPACITY



COP24 · KATOWICE 2018
UNITED NATIONS CLIMATE CHANGE CONFERENCE





Ministry of Climate
and Energy

**THANK
YOU!**

