



Ministry of  
Climate and Energy  
Republic of Latvia

# FACILITATIVE, MULTILATERAL CONSIDERATION OF PROGRESS LATVIA

Bonn  
12.06.2026.

---

Olga Bogdanova  
Deputy State Secretary  
Ministry of Climate and Energy



# THE EU AND MEMBER STATES NATIONAL CIRCUMSTANCES

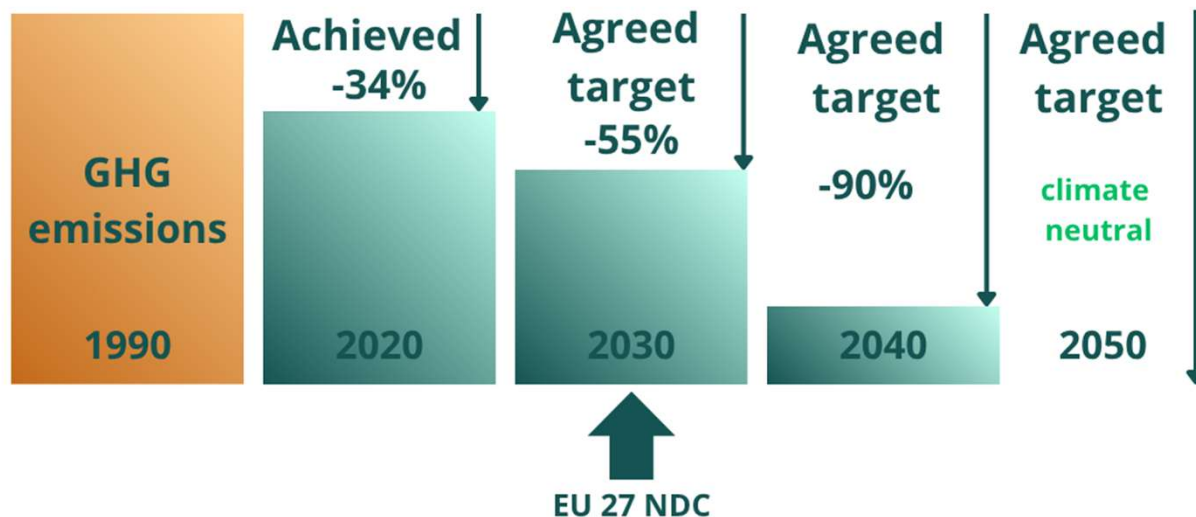
- ▶ 27 countries
- ▶ 450 million people
- ▶ 24 languages
- ▶ 1 NDC
- ▶ 28 BTRs



## Key facts about Latvia

- ▶ Baltic state in Northern Europe
- ▶ Capital: Riga
- ▶ EU Member State since 2004
- ▶ Population: 1.86 million (2024)
- ▶ Area: 64,589 km<sup>2</sup>
- ▶ Forest cover: 51% (2024)
- ▶ GHG emissions per capita: 5.13 t CO<sub>2</sub> eq
- ▶ Climate context: rising temperatures, heavier rainfall and flood risks

# EU'S PATHWAY TO CLIMATE NEUTRALITY



The European Climate Law sets binding targets to reduce net GHG emissions by **at least 55% by 2030**, compared to 1990 levels and reach zero emissions by 2050.

## Main EU climate policy instruments

**EU ETS**  
**Emissions Trading System**  
 Power and heat, industrial installations, aviation, maritime  
**Target: - 62% by 2030 vs 2005**

**ESR - Effort sharing Regulation**  
 Transport, building, agriculture, small industry and waste.  
**Target: - 40% by 2030 vs 2005**  
 Latvia's target: -17% by 2030 vs 2005

**LULUCF - Land Use, Land-Use Change and Forestry**  
 Target: 42 MtCO<sub>2</sub>eq additional removals by 2030  
 Latvia's target: +0.639 Mt CO<sub>2</sub> eq removals by 2030

# UNDERSTANDING THE EU NATIONALLY DETERMINED CONTRIBUTION (NDC)

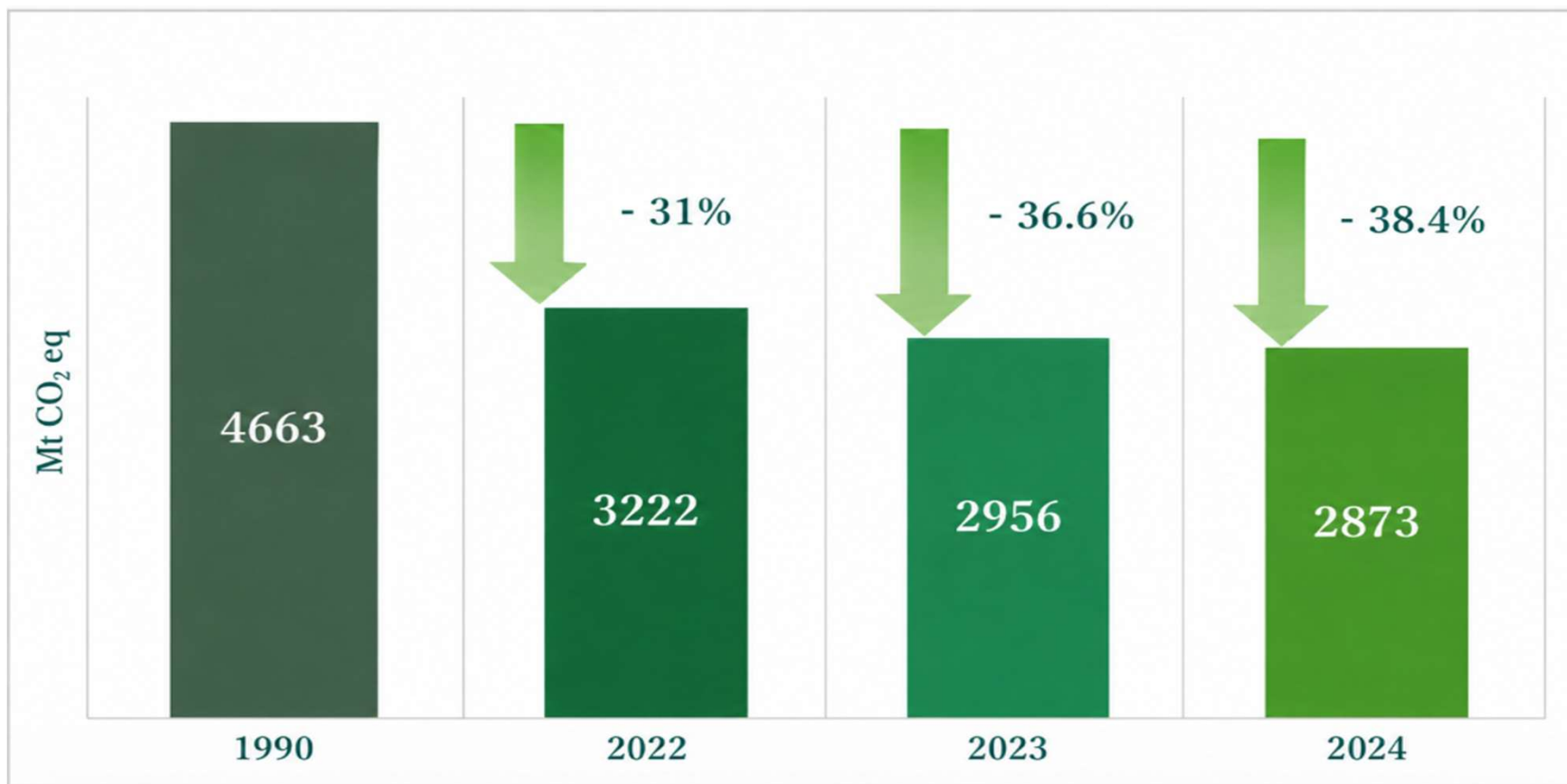
Information	Description
Target and description	<b>Economy-wide net domestic reduction</b> of at least 55% in greenhouse gas emissions by 2030 compared to 1990.
Target type	Economy-wide absolute emission reduction.
Target year	2030 <b>single-year target</b>
Base year	1990
Implementation period	2021-2030
Geographical scope	<b>EU 27</b> including EU nine outermost regions
Gases	CO <sub>2</sub> , CH <sub>4</sub> , N <sub>2</sub> O, HFCs, PFCs, SF <sub>6</sub> , NF <sub>3</sub>

The 'Fit for 55' package



# THE EU AND MEMBER STATES ARE PROGRESSING TOWARDS THEIR 2030 NDC

EU net GHG emissions **decreased by 38.4%** in 2024 within the NDC scope.



Source: EU NID 2026

## RECENT DEVELOPMENTS – THE EU 2035 NDC

**EU27 indicative 2035 NDC contribution between 66.25% - 72.5% net GHG emissions reduction compared to 1990.**

**On 5 November 2025**, the Council of the EU agreed on the European Commission proposal of a **legally binding net emissions reduction target for 2040 of 90%** compared to 1990 levels.

The agreement on the legally binding 2040 target of -90% has been enshrined in the amended European Climate Law. The amendment entered into force in April 2026.

# LATVIA'S SECTORAL CONTRIBUTION TO THE EU NDC

## Key mitigation actions across transport, buildings, agriculture and LULUCF

### Transport



- EV charging infrastructure
- Zero- emission public transport
- Railway modernisation
- Multimodality and Park& Ride

### Buildings and energy use



- Apartment building renovation
- Renewable energy microgeneration
- Heat pumps and solar installations
- District heating electrification

### Agriculture



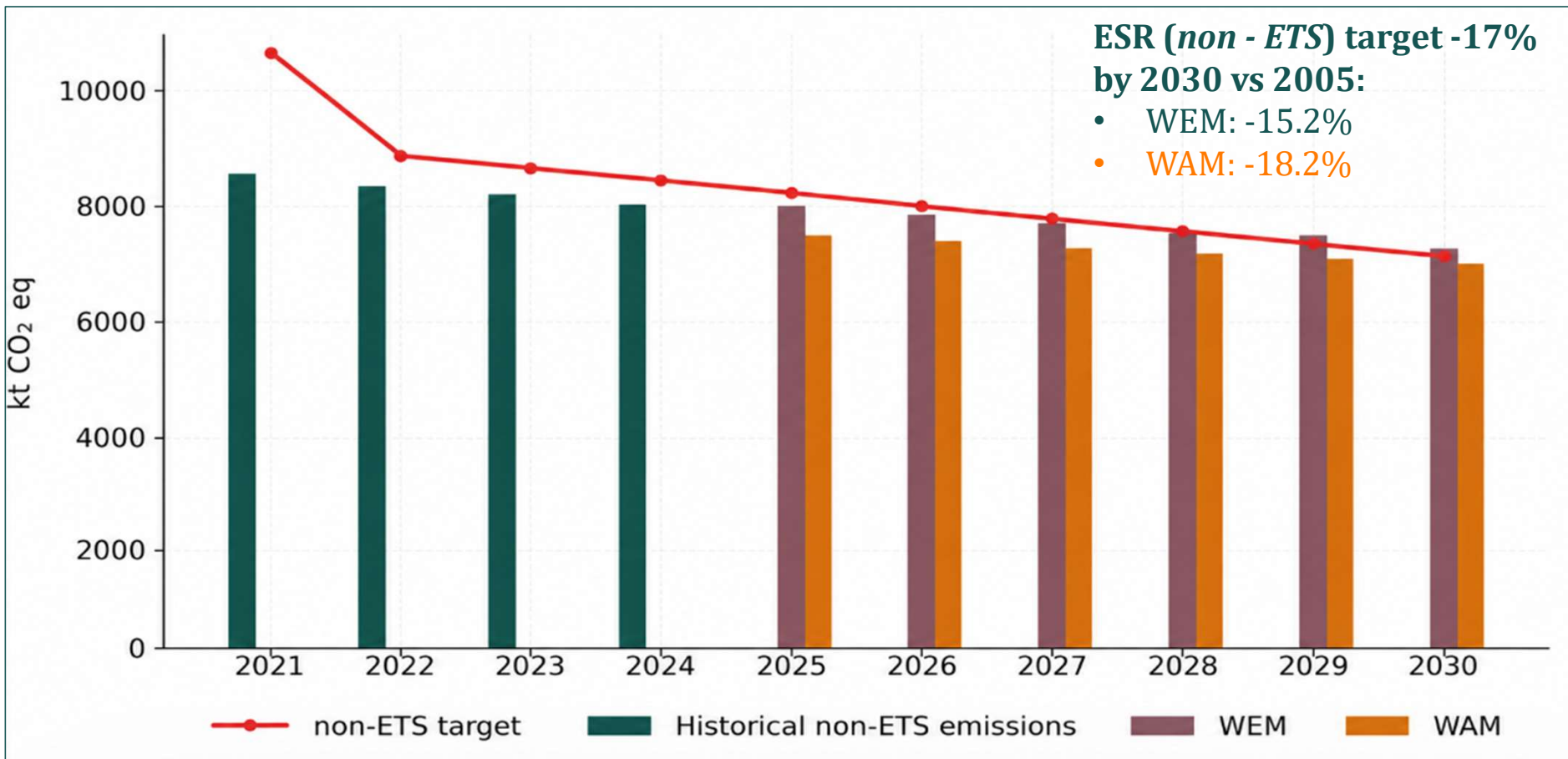
- Fertilization planning and precision fertiliser application
- Low emissions livestock farming and manure management
- Biogas production
- Promotion of grassland conversation

### LULUCF

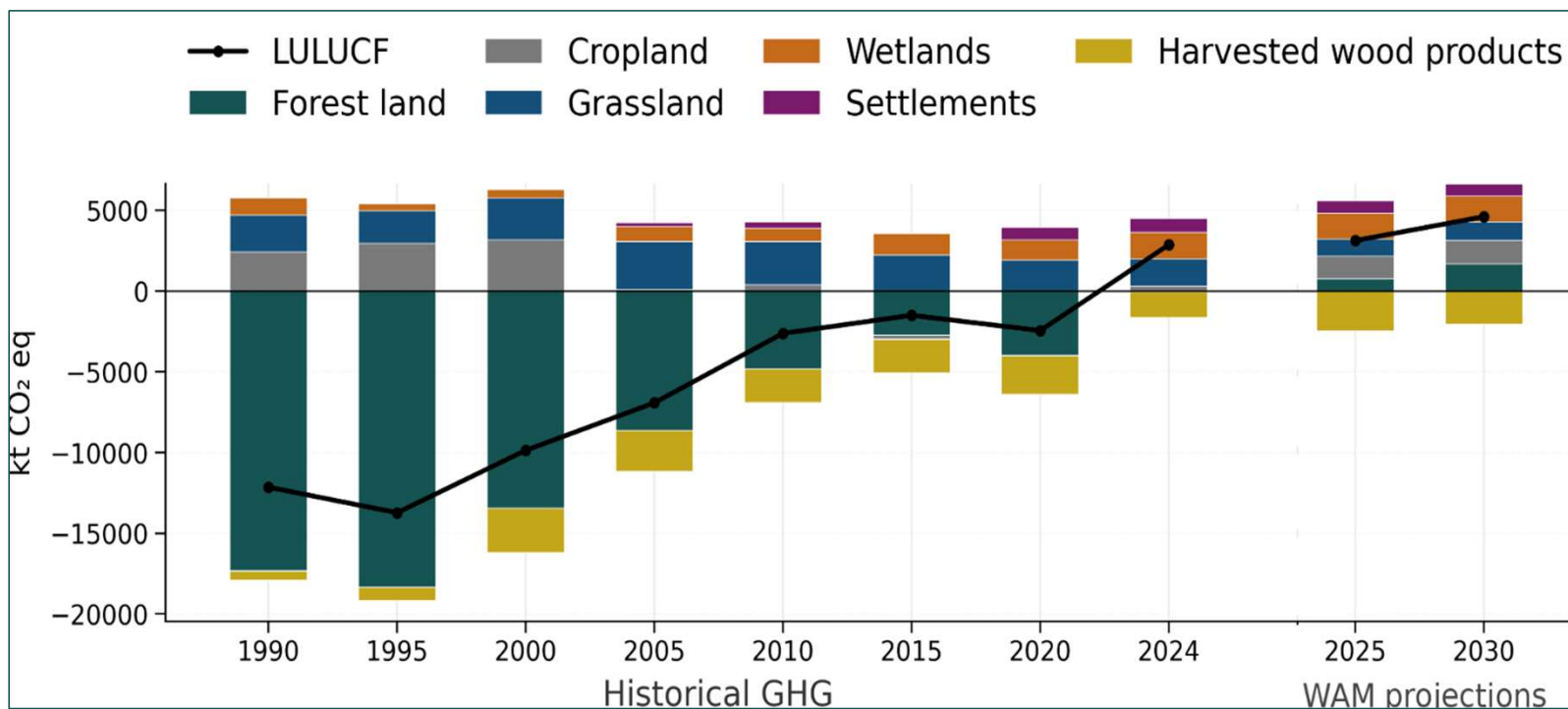


- Afforestation of nutrient-poor soils in grassland and cropland
- Forest regeneration after natural disturbances
- Restoration of peat extraction sites

# PROGRESS TOWARDS LATVIA'S ESR TARGET



# LULUCF: TARGETED ACTION TO STRENGTHEN REMOVALS



## Main drivers

- high share of organic soils
- ageing forest structure
- climate change related natural disturbances



# HIGHLIGHTS AND SUCCESS STORIES

## Climate governance

Climate Law adopted in 2025, **strengthening Latvia's pathway to climate neutrality and coordination across ministries, institutions and municipalities.**

## Support for building renovation

EUR 173 million support programme for multi-apartment buildings, **targeting at least 30% energy savings.**

## Clean mobility support

- EUR 30 million programme supporting the uptake of EVs and PHEVs by individuals, **by the end of 2025, the available funding had been fully allocated, supporting more than 6,400 final beneficiaries;**
- A new program of EUR 40 million approved in April 2026.

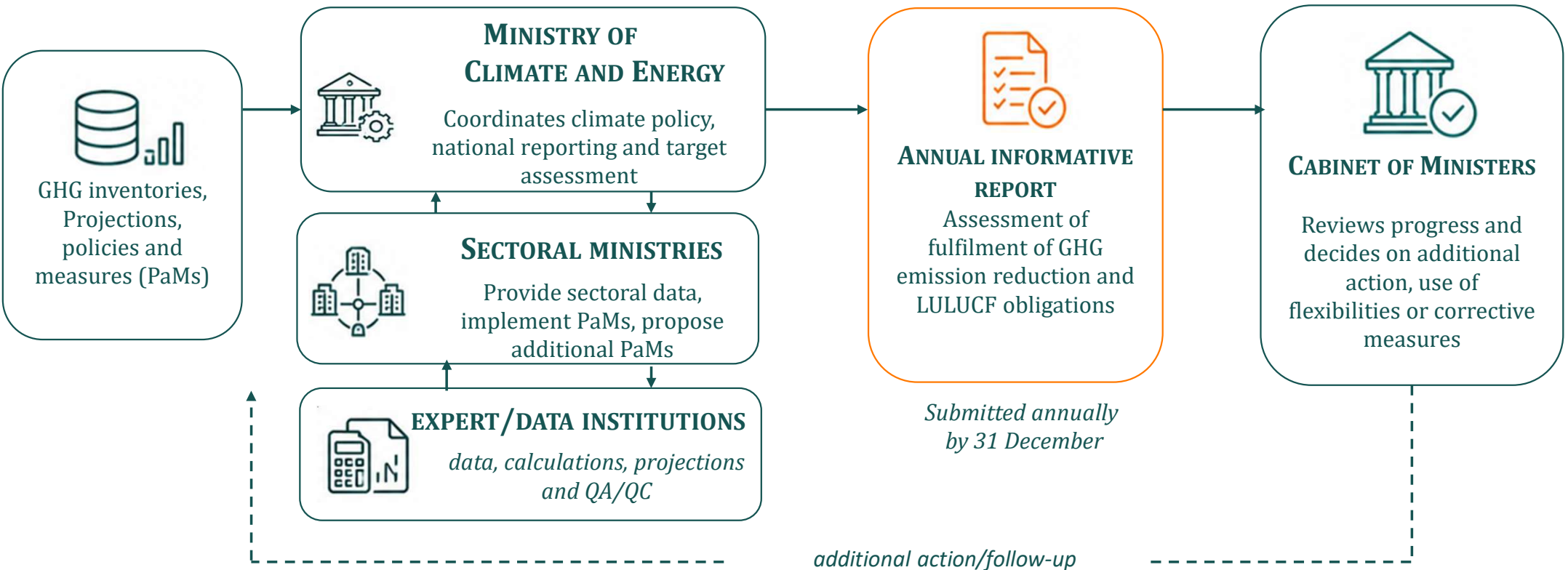
## Renewable energy development

- Solar generation increased **2.2 times in 2024**, reaching **536 GWh**;
- Renewables accounted for **around 73% of electricity generation** in 2024.

# NATIONAL SYSTEM FOR MONITORING AND ASSESSMENT OF CLIMATE TARGETS



Climate Resilience and Economic Sustainability Law | Climate Neutrality Strategy | National Energy and Climate Plan 2021 - 2030  
*Defines Climate Change Policy*



# FINANCIAL, TECHNOLOGY TRANSFER AND CAPACITY-BUILDING SUPPORT PROVIDED TO DEVELOPING COUNTRIES



## Public financial support provided

Public climate finance has been provided since 2015  
Substantial increase from 2023 compared to 2021/2022:

- 2021: 109 402 EUR
- 2022: 117 124 EUR
- 2023: 846 900 EUR



## Type of support/Main focus

Capacity –building:

- Mitigation and Adaptation

Technology transfer - Mitigation

Voluntary contributions:

- Emergency response and humanitarian support for climate-related extreme events



## Policy basis

National legal framework:

- Law on Pollution of Latvia/Climate Resilience and Economic Sustainability Law (from 2025)
- Development Cooperation Policy Guidelines for 2021-2027



## Channels

Bilateral:

- Bilateral grant projects/  
National development cooperation

Multilateral:

- Voluntary contributions/  
International financial institutions



Ministry of  
Climate and Energy  
Republic of Latvia

**THANK YOU!**

