

# HOW CAN YOU CONTRIBUTE TO ADVANCING WORK ON LOSS AND DAMAGE?

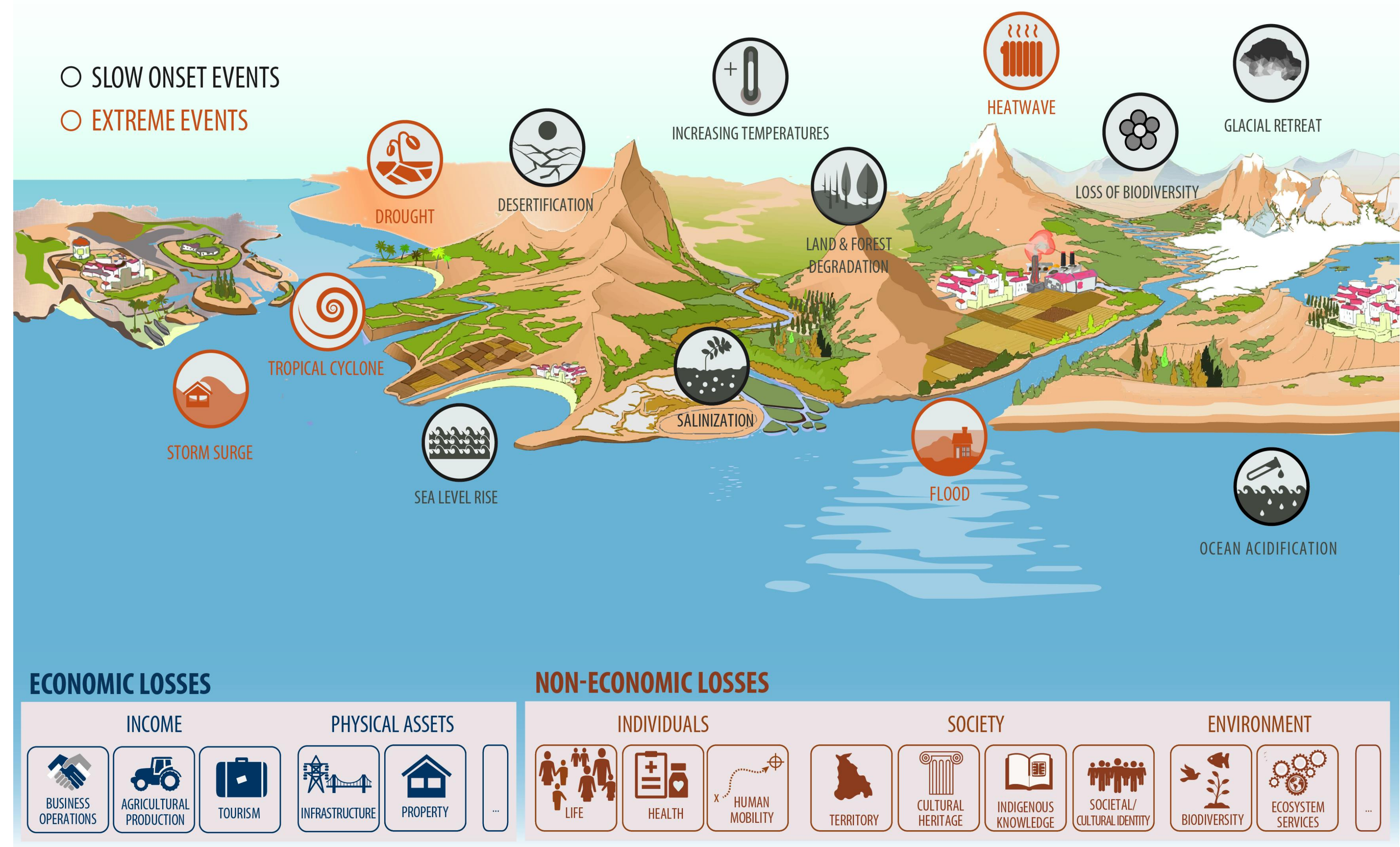
The COP, in 2013, established the Warsaw International Mechanism for Loss and Damage to address loss and damage associated with climate change impacts, including extreme weather events and slow onset events, in developing countries that are particularly vulnerable to the adverse effects of climate change.

**The Warsaw International Mechanism for Loss and Damage has three key functions in addressing loss and damage associated with the adverse effects of climate change:**

- Enhancing knowledge and understanding of comprehensive risk management approaches.
- Strengthening dialogue, coordination, coherence and synergies among relevant stakeholders.
- Enhancing action and support, including finance, technology and capacity-building.

**The Executive Committee of the Warsaw International Mechanism** guides the implementation of the functions of the Mechanism through its workplan. The current five-year rolling workplan is clustered in five strategic workstreams, to enhance cooperation and facilitation in relation to:

- Slow onset events.
- Non-economic losses.
- Comprehensive risk management approaches to address and build long-term resilience of countries, vulnerable populations and communities to loss and damage.
- Human mobility, including migration, displacement and planned relocation.
- Action and support.



**What is the role of the scientific community in addressing loss and damage?**

- The COP encouraged the Executive Committee 'to improve access to, and interaction with, relevant scientific and technical panels, bodies and expertise available to the Warsaw International Mechanism, its Executive Committee and substructures over time, including by, inter alia, inviting relevant organizations at all levels and scientific research organizations with expertise in science relevant to loss and damage to ensure that the best available science is highlighted in the work of the Warsaw International Mechanism' (Decision 4/CP.22, paragraph 4 (c)).
- The COP invited the research community, among others, 'to strengthen cooperation and collaboration, including through partnerships, with the Executive Committee on topics related to averting, minimizing and addressing loss and damage associated with the adverse effects of climate change, including extreme weather events and slow onset events' (Decision 5/CP. 23, paragraph 15).

**Become part of the slow onset events database.**

If your organization is working on slow onset events (i.e. rising temperatures, desertification, loss of biodiversity, land and forest degradation, glacial retreat and related impacts, ocean acidification, sea level rise and salinization), share information about your efforts online.



**ADDRESSING SLOW ONSET EVENTS**

The database maps 164 organizations working on slow onset events - rising temperatures, desertification, loss of biodiversity, land and forest degradation, glacial retreat and related impacts, ocean acidification, sea level rise and salinization, as defined by COP decision 1/CP.16 and the scope of their current efforts.

In the database, you can find information, as of December 2015, on the organizations working on slow onset events, their geographic coverage, as well as descriptions of their institutional mandates and scope of efforts to address slow onset events.

The database has been developed in the context of the implementation of the initial two-year workplan of the Executive Committee of the Warsaw International Mechanism for Loss and Damage.

Please submit data to be included in the database using this [Template](#)

[ACCESS THE DATABASE](#)

**Share case studies and know-how through the Fiji Clearing House for Risk Transfer.**

Launched at COP 23, the Fiji Clearing House for Risk Transfer bridges the worldwide supply of knowledge and know-how about climate risk management with the needs of vulnerable countries and communities.

Register on the RISK TALK – an online platform to answer questions countries and communities have, and share your knowledge with those who most need it!



**WELCOME TO THE FIJI CLEARING HOUSE FOR RISK TRANSFER**

The UNFCCC repository of information on insurance and risk transfer

Find a solution

Do you have a question on risk transfer? Join the RISK TALK community to engage in dialogue and find solutions.

Find a solution

Latest discussions in RISK TALK

WHY ISN'T IT POSSIBLE TO FORECAST EARTHQUAKES? Forecast: Earthquakes

WHERE CAN I FIND "THE BIG PICTURE" OF CLIMATE CHANGE? Big Picture: Overview: Climate change

WHAT IS THE BIGGEST ENVIRONMENTAL RISK LIVING IN SWITZERLAND? Environment: Switzerland: Risk

HOW CAN YOUTHS REDUCE GREENHOUSE EMISSIONS IN A UNIVERSITY? Greenhouse emissions: Kenya: University: Youth: Climate change

The content above is automatically generated from RISK TALK and can only be accessed with a valid account. Find more information

**Join the roster of experts of the Warsaw International Mechanism for Loss and Damage.**

At its seventh meeting (March 2018) the Executive Committee developed the terms of reference for three expert groups to support its activities on slow onset events, non-economic losses and comprehensive risk management. The Executive Committee will engage experts registered in the roster to advance work on these areas.



HOME    ROSTER OF EXPERTS OF THE WARSAW INTERNATIONAL MECHANISM

Roster of Experts of the Warsaw International Mechanism

1 Introduction    2 Personal details    3 Employment and education    4 Expertise    5 Confirmation and submission    6 Preview    7 Complete

Terms of Reference

At Excom 7 (March 2018), the Executive Committee established three expert groups on slow onset events, non-economic losses and comprehensive risk management approaches. At the same meeting, the Executive Committee also established the Roster of Experts of the Warsaw International Mechanism to identify experts who would be engaged in different activities mandated to the expert groups as per the five-year workplan of the Excom.

If you wish to register in the roster, please read the [Terms of Reference](#).

Next Page >