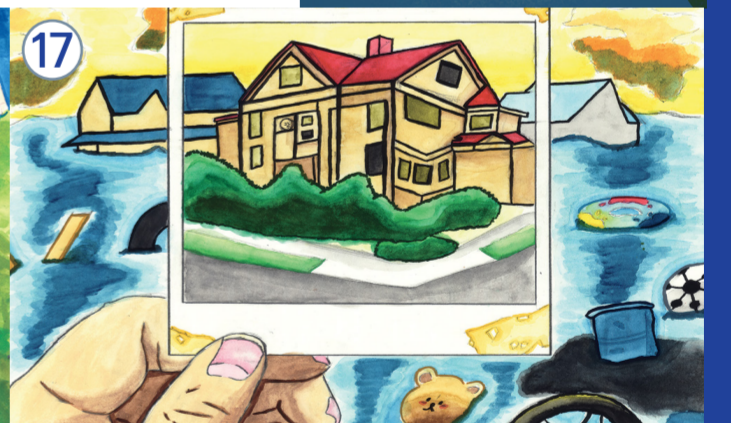




# 2022 Climate Change Adaptation Illustration Contest

## Republic of Korea



The 'Climate Change Adaptation Illustration Contest' is a drawing and illustration competition hosted by the Ministry of Environment in collaboration with KEI KACCC. Our primary goal is to promote public awareness and understanding of climate change adaptation.

In 2022, the contest received 535 submissions. After thorough evaluation, 17 artworks were selected from both general and children's categories and recognized with Grand Prize, Excellence, and Encouragement awards. These 17 artworks are the ones that were awarded.

1. Won uses a chameleon as a metaphor for human adaptability in the face of climate change and other challenges. The image portrays the ability of humans to adjust and thrive in changing environments, much like the chameleon changes its color to blend in with its surroundings.
2. Choi depicts a float tube car that can travel in heavy rain, allowing for fishing in all weather conditions. The painting suggests that, with the help of technology, the effects of climate change can be reframed from a source of fear and disaster to an opportunity for joy and unexpected pleasure.
3. Seok offers a vision for addressing drought and water scarcity resulting from climate change through the development of rainwater storage and utilization technology. The painting depicts a sequence of rainwater storage, water purification, and additional storage systems, illustrating a potential solution for managing water resources in a sustainable and resilient manner.
4. Lee portrays an innovative use of recycled plastic to create air capsules that can protect drivers and vehicles during heavy rainfall. The artwork emphasizes the potential of eco-friendly technology to address the challenges posed by climate change, and highlights the importance of sustainable materials in achieving this goal.
5. Choi highlights the potential of global warming to create new opportunities for agricultural growth in the Republic of Korea. The artwork suggests that warmer temperatures may enable the cultivation of crops that were previously imported, such as tropical fruits.
6. Kim introduces several measures for mitigating urban heat. The artwork suggests using cooling paint on rooftops, planting trees along streets, installing shades and spraying coolers on sidewalks to create a more pleasant and sustainable urban environment.
7. Kim expresses concern that the urgency of responding to climate change may be overlooked amidst the distractions and busyness of daily life. Through the artwork, Kim urges viewers to recognize the gravity of climate change and to take action to address it.
8. Hwang depicts a range of efforts and measures to adapt to the challenges of climate change in urban environments. These include cool roofs, shelters for cold snap, flood warning system using AI, and electronic vehicles.
9. Kim's painting explores the opportunities that can arise from the challenges of climate change, such as the development of new technologies and innovative approaches to crop cultivation and warning systems.
10. Park emphasizes the gravity of climate change and its devastating impact on the natural environment by juxtaposing two contrasting images: one portrays a bright and vibrant scene of blue skies, green grass, and trees, while the other depicts a gloomy picture of a gray sky filled with clouds and black smoke.
11. Seo's painting portrays the actions that individuals can take in their daily lives to combat climate change, such as using public transportation, conserving electricity, and sharing information to prepare for heat waves.
12. Kim's painting highlights the connection between the melting glaciers at the North Pole and the impact on the city through a decalcomania composition. The artwork portrays a polar bear sitting on melting ice due to global warming, and a person struggling to endure heavy rain.
13. Kim depicts the impact of climate change on the four seasons, showing how spring and autumn have become relatively shorter, while summer and winter have become more extended. The artwork also proposes practical measures for adapting to climate change, such as installing shades on pavements, using solar panels on rooftops, and recycling plastic.
14. Kim's artwork portrays the social changes that have been brought by climate change. The painting features various sustainable energy sources, including solar panels, hydropower, and wind power, which have facilitated electricity generation. Additionally, the artist highlights the growing use of electric vehicles and charging stations, as well as the cultivation of tropical fruits.
15. Lee's painting portrays efforts to adapt to climate change by constructing a floating city using recycled materials, preparing for the anticipated rise in sea levels. Additionally, the image of coastal garbage being removed highlights the responsibility of human beings to take care of nature and preserve it for future generations.
16. Choi's artwork proposes a sustainable approach to use resources by showcasing the production of eco-friendly paper made from sugarcane as a viable alternative to traditional paper made from softwood trees.
17. Jung's artwork evokes a profound sentiment of loss for the disappearing habitats of humans and animal or plant species. The artist's use of an old, faded photograph expresses a sense of nostalgic reminiscence, effectively capturing a deep sense of sadness and sorrow.