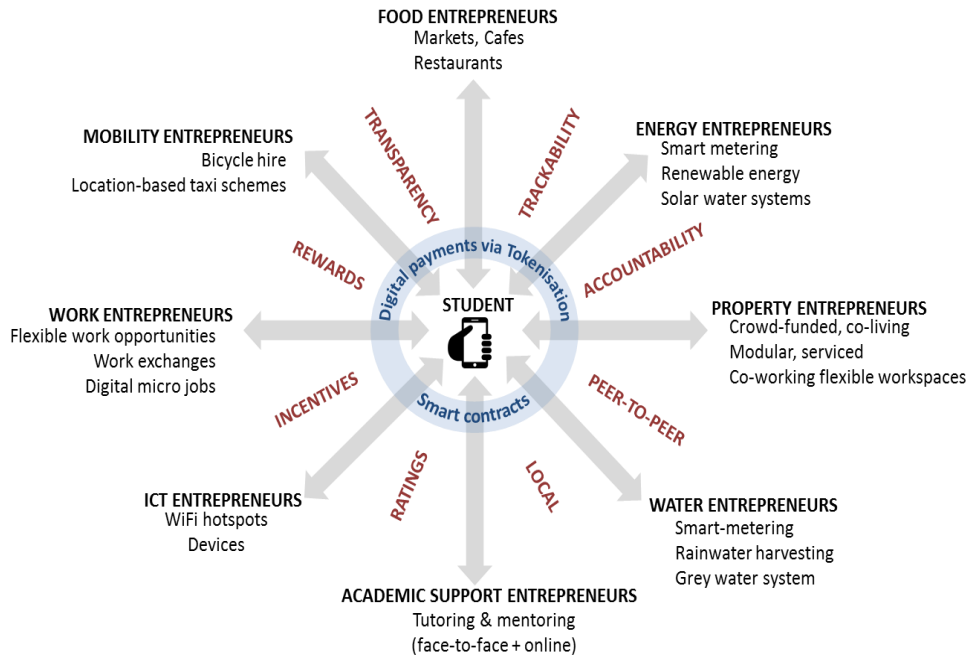
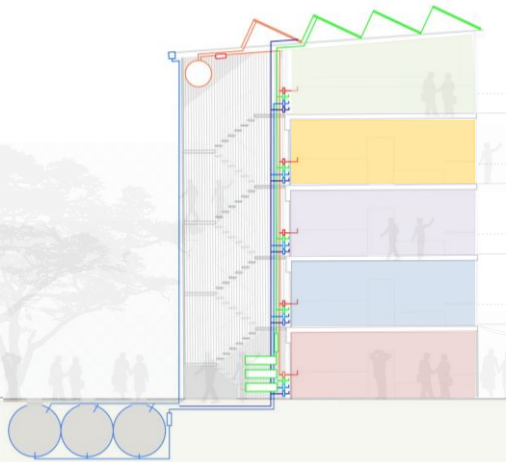


Innovation: New Business Models and Technology



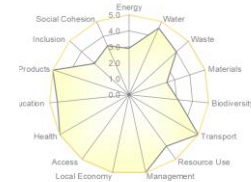
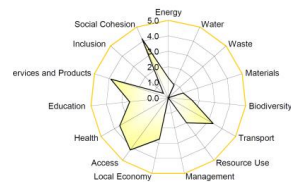
- Digital ecosystems to increase affordability and accessibility of services for students.
- Accommodation, energy, food, water, ICT, academic support, mobility services provided by circular entrepreneurs more affordably through smart metering, tokenisation, crowd funding, work exchanges.
- *Gibberd, J. 2019. Digital Ecosystems for Student Services (DESS)*

Jobs: Onsite Service Enterprises (OSE)



- Mixed-use passive buildings + circular renewable energy, hot water, recycling, mobility, childcare, ICT, food circular enterprises create local jobs, reduce waste, increase resilience and reduce capital and operating costs.
- *Gibberd, J., 2019, Using Onsite Service Enterprises to Improve Housing Affordability and Sustainability*

Residential density +++ Employment density+++ Enterprise density+++



Jeremy Gibberd
www.gauge.co.za

GAUGE

Local Growth: BEST Neighborhoods



- Resilient local growth through synergistic relationships between neighbourhood communities and circular enterprises for:
- Food: Local produce, food markets, organic waste, recycling, fertility.
- Water: Rainwater harvesting, water use, grey water, irrigation.
- Furniture and equipment: Manufacture, use, repair, reuse, recycle.
- Education: Primary, secondary, tertiary, business support, local enterprises.
- *Gibberd, 2020. Synergistic Interventions for Sustainability Improvements*

Sustainability Performance		Existing	Proposed
SH	Shelter	0.96	3.45
MO	Mobility	1.85	1.93
FO	Food	3.15	4.14
GO	Goods	0.67	5.00
SE	Services	1.25	5.00
WA	Waste	0.00	5.00
BI	Biocapacity	3.83	3.83
HE	Health	2.02	3.56
KN	Knowledge	0.00	3.87
EM	Employment	1.16	2.34
		14.90	38.22

Ecological Footprint Capability		Existing	Proposed
SH	Shelter	0.96	3.45
MO	Mobility	1.85	1.93
FO	Food	3.15	4.14
GO	Goods	0.67	5.00
SE	Services	1.25	5.00
WA	Waste	0.00	5.00
BI	Biocapacity	3.83	3.83
ECFC	Ecological Footprint Capability	1.67	4.06

Human Development Capability		Existing	Proposed
HE	Health	2.02	3.56
KN	Knowledge	0.00	3.87
SL	Employment	1.16	2.34
HDC	Human Development Capability	1.56	3.29

Built Environment Sustainability Capability		Existing	Proposed
BECS	Ecological Footprint Capability	1.67	4.06
HDC	Human Development Capability	1.56	3.29
BESG	Built Environment Sustainability Capability	1.37	3.67

