

Closing the Knowledge Gap

Challenges facing island settlements

- Blurring of lines between local and national government – who has responsibility for settlements?
- Need to formalise tenure in order to provide support and so residents can plan and invest in resilience with confidence
- Scarcity of data, or patchy inconsistent data – dependence on international agencies and studies
- Translation of data into understandable and actionable information at City Government level
- Need for intermediary partners to assist to collate, interpret and action plan

Honiara, Solomon Islands



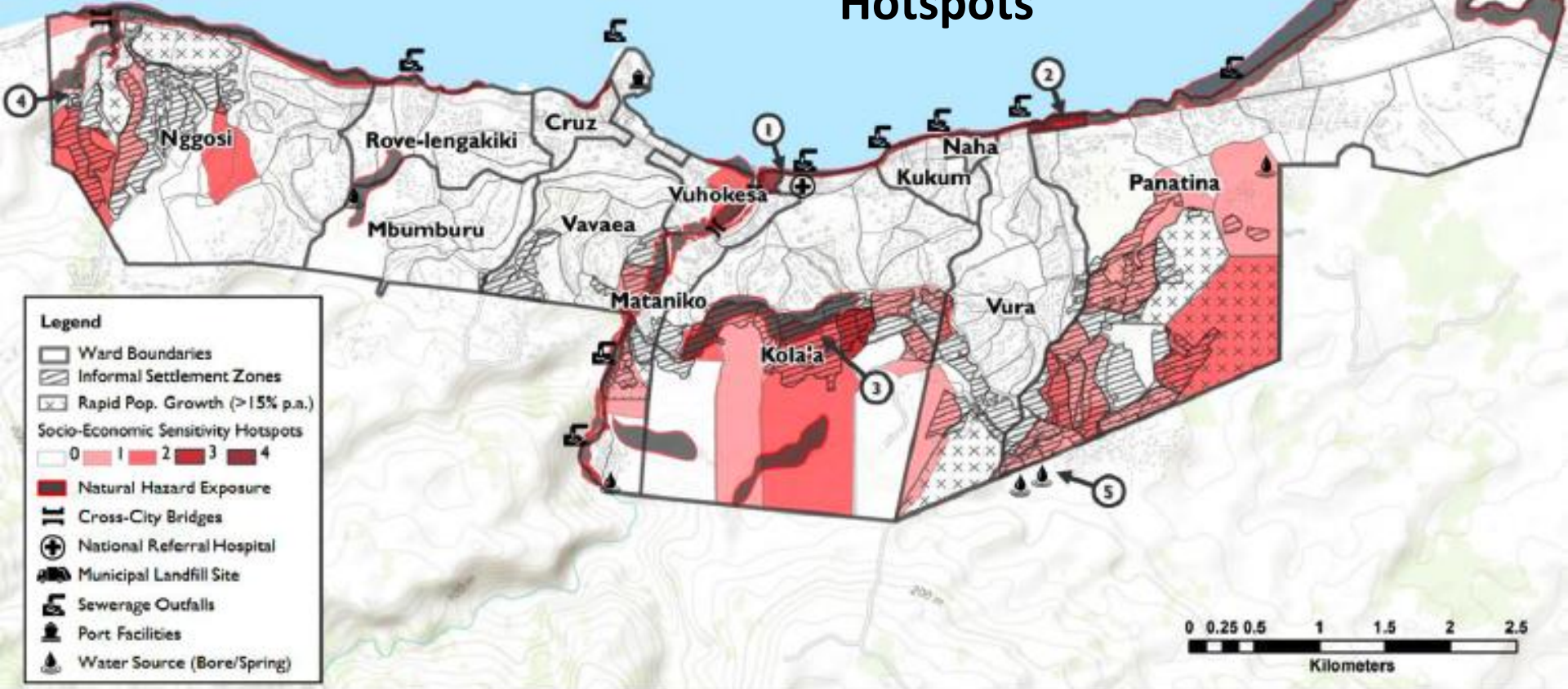
Informal settlements

**28% of Honiara
population
15% of land area**



EXAMPLE: Honiara Urban Risk and Climate Adaptation Plan (HURCAP) UN Habitat and ICLEI roles

Vulnerability Hotspots





Small islands have towns and cities with many of the same sustainable development challenges as other cities around the world!

Front-Line Cities & Islands

ICLEI and GLISPA call for accelerated international assistance for the sustainable and resilient development of most vulnerable island towns and cities.

City – island twinning

Transformative Actions

Climate Change, SDGs, healthy oceans

Powerful partnerships

This initiative is endorsed by the Fiji COP Presidency

Front-Line Cities & Islands will

Build a movement of island mayors and leaders, other cities world-wide, regional and international partners, to:

- Highlight the **special case** of island urban settlements and economies
- Cultivate **city-to-city and island-to-island learning** and strategic partnerships
- Develop priority **issues and projects**
- Test and share **solutions**

Develop funding sources and **innovative financing** mechanisms for the long term

Develop a **special pathway** through UNFCCC and other multilateral and donor processes for coastal cities, municipalities and settlements to assist them to accelerate adaptation to climate change and urban resilience building