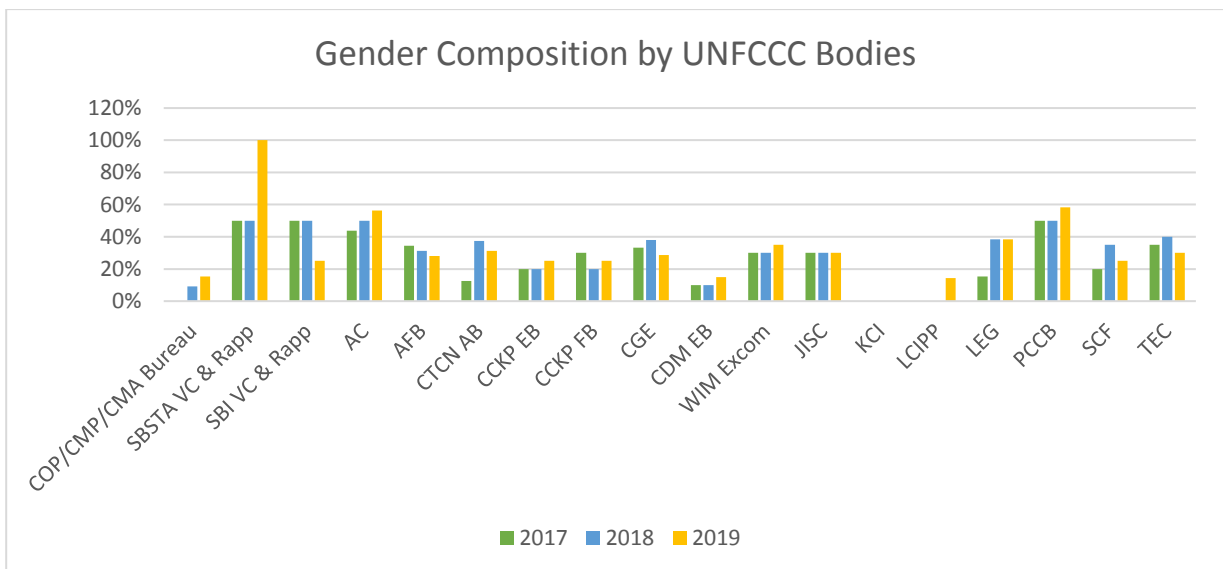
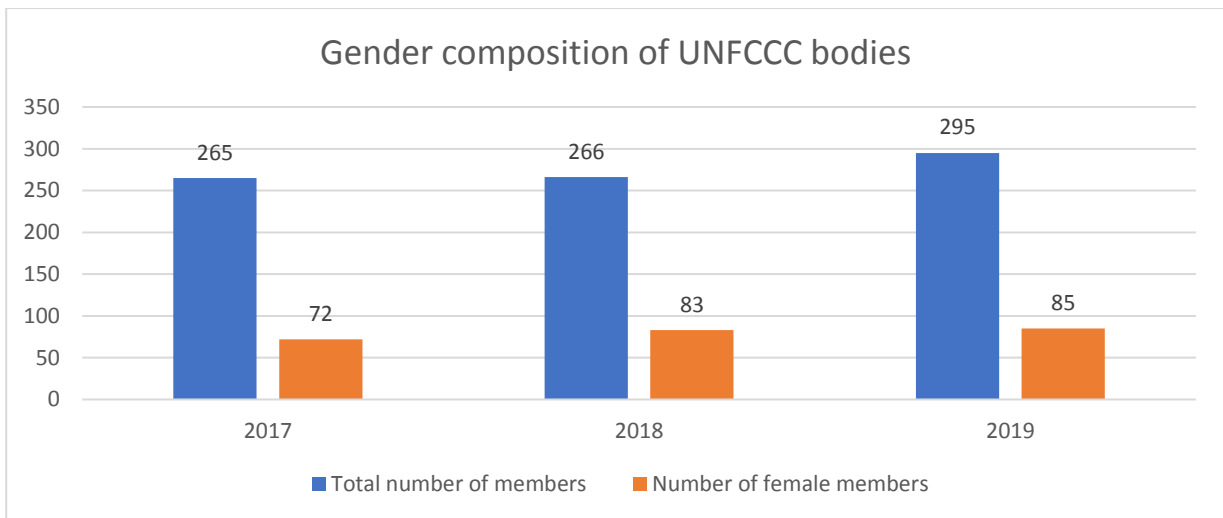




GENDER COMPOSITION OF BODIES ESTABLISHED UNDER THE CONVENTION, KYOTO PROTOCOL AND PARIS AGREEMENT

Further to decision 3/CP.23, the table below contains information on the gender composition of bodies established under the Convention, Kyoto Protocol and Paris Agreement, including the comparison with data for 2017 to 2019 (as at 12 April 2019).





Body	Total number of members in 2017 ^a	Number of female members 2017	Percentage of women members in 2017 ^b	Total number of members in 2018 ^a	Number of female members 2018	Percentage of women members in 2018 ^b	Total number of members in 2019 ^a	Number of female members 2019	Percentage of women members in 2019 ^b	Change in the percentage of women compared with 2018
COP/CMP/CMA Bureau	11	0	0%	12 ^c	1	9%	13 ^c	2	15%	6%
SBSTA Bureau ^d	2	1	50%	2	1	50%	2	2	100%	50%
SBI Bureau ^d	2	1	50%	2	1	50%	4 ^c	1	25%	-25%
Adaptation Committee	16	7	44%	16	8	50%	16	9	56%	6%
Adaptation Fund Board	32	11	34%	32	10	31%	32	9	28%	-3%
Advisory Board of the Climate Technology Centre and Network	16	2	13%	16	6	38%	16	5	31%	-6%
Compliance Committee under the Kyoto Protocol - Enforcement Branch	20	4	20%	20	4	20%	20	5	25%	5%
Compliance Committee under the Kyoto Protocol - Facilitative Branch	20	6	30%	20	4	20%	20	5	25%	5%
Consultative Group of Experts	21	7	33%	21	8	38%	21	6	29%	-10%
Executive Board of the clean development mechanism	20	2	10%	20	2	10%	20	3	15%	5%
Executive Committee of the Warsaw International Mechanism for Loss and Damage associated with Climate Change Impacts	20	6	30%	20	6	30%	20	7	35%	5%
Joint Implementation Supervisory Committee	20	6	30%	20	6	30%	20	6	30%	0%



Body	Total number of members in 2017 ^a	Number of female members 2017	Percentage of women members in 2017 ^b	Total number of members in 2018 ^a	Number of female members 2018	Percentage of women members in 2018 ^b	Total number of members in 2019 ^a	Number of female members 2019	Percentage of women members in 2019 ^b	Change in the percentage of women compared with 2018
Katowice Committee of Experts on the Impacts of the Implementation of response measures	n/a	n/a	n/a	n/a	n/a	n/a	12	0	0%	0%
Local Communities and Indigenous Peoples Platform	n/a	n/a	n/a	n/a	n/a	n/a	14	2	14%	14%
Least Developed Countries Expert Group	13	2	15%	13	5	38%	13	5	38%	0%
Paris Committee on Capacity-building	12	6	50%	12	6	50%	12	7	58%	8%
Standing Committee on Finance	20	4	20%	20	7	35%	20	5	25%	-10%
Technology Executive Committee	20	7	35%	20	8	40%	20	6	30%	-10%
Grand total	265	72	27%	266	83	31%	295	85	29%	-2%

^a The figures presented in this column reflect the total number of positions open for membership in each body, which may differ from the number of positions filled at the time of this notification.

^b The percentage is calculated on the actual positions filled and not the total number of positions open for membership.

^c Membership of these Bureaux includes additional members from amongst Parties to the Paris Agreement.

^d The Chairs of SBSTA and SBI are members of the Bureau of the COP/CMP/CMA, and are therefore not counted in the bureaux of the SBSTA and SBI.

^e The Consultative Group of Experts is composed of 24 members, including 21 government representatives. The data in the table relate to the government representatives only.