

GIZ's Experience with Capacity Development Needs Assessments

Climate Change and Disaster Risk Management Cluster | 10 July 2019

giz Deutsche Gesellschaft
für Internationale
Zusammenarbeit (GIZ) GmbH

On behalf of



Federal Ministry
for the Environment, Nature Conservation
and Nuclear Safety

of the Federal Republic of Germany

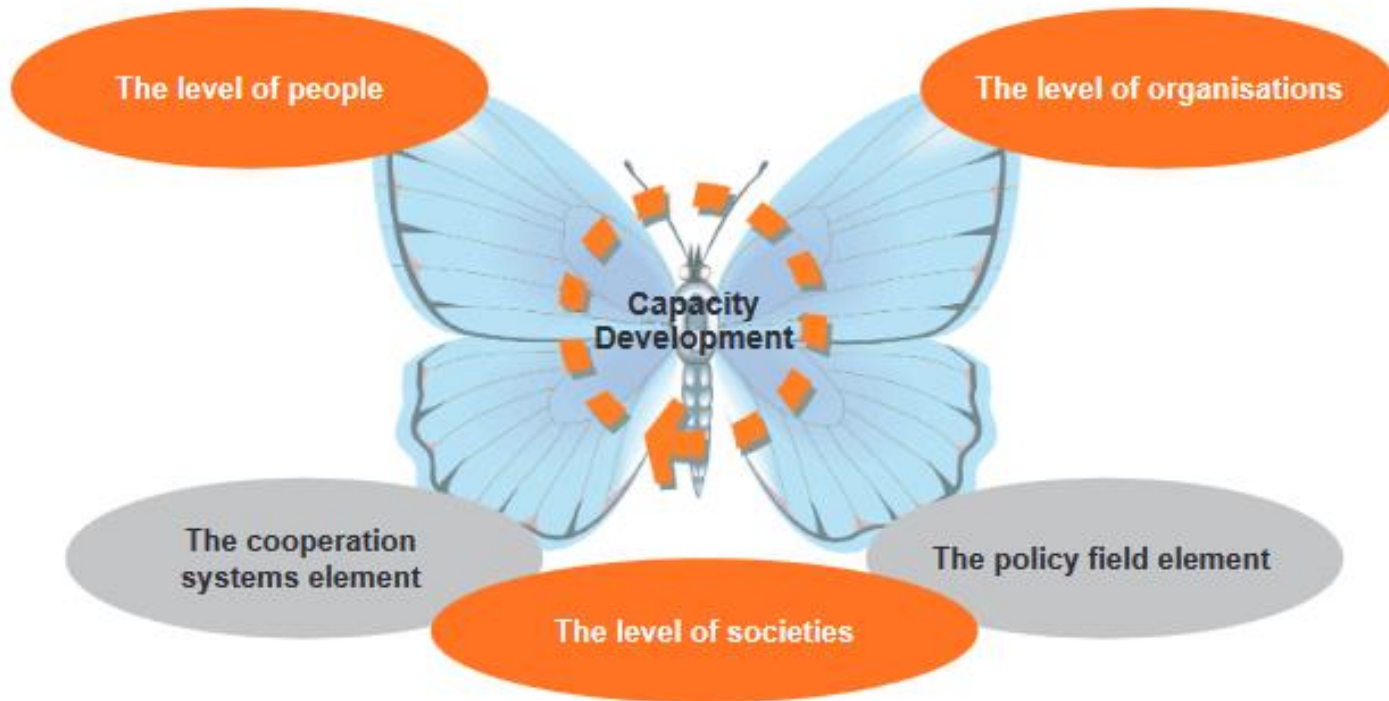
Capacity for What?

Implementing your Climate Change Strategy!

Achieving Climate Resilience!

Net Zero by 2050!

Implementing your NDCs!



How? What methods?

No silver bullet:

Information gathering, literature review

Self assessment

Key informant interviews, focus group discussions

SWOT Analysis

Example Philippines: Preparing the Grounds for Climate Finance Readiness in the Philippines



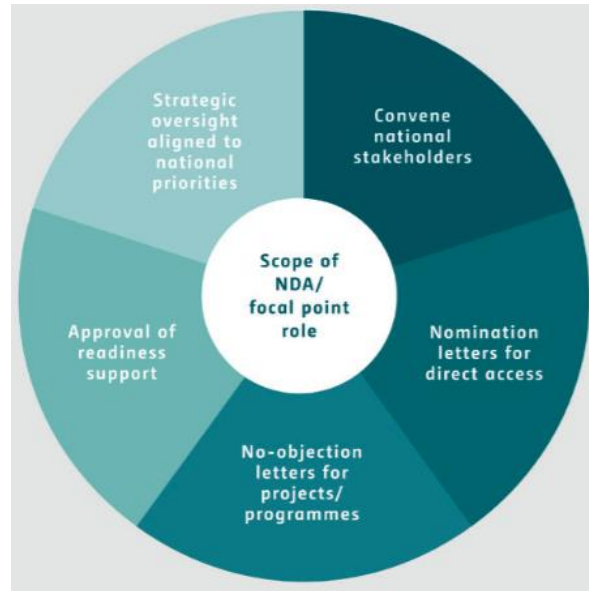
One objective:

... assess the institutional landscape of climate finance readiness and capacities for efficient and effective use of available climate funding...

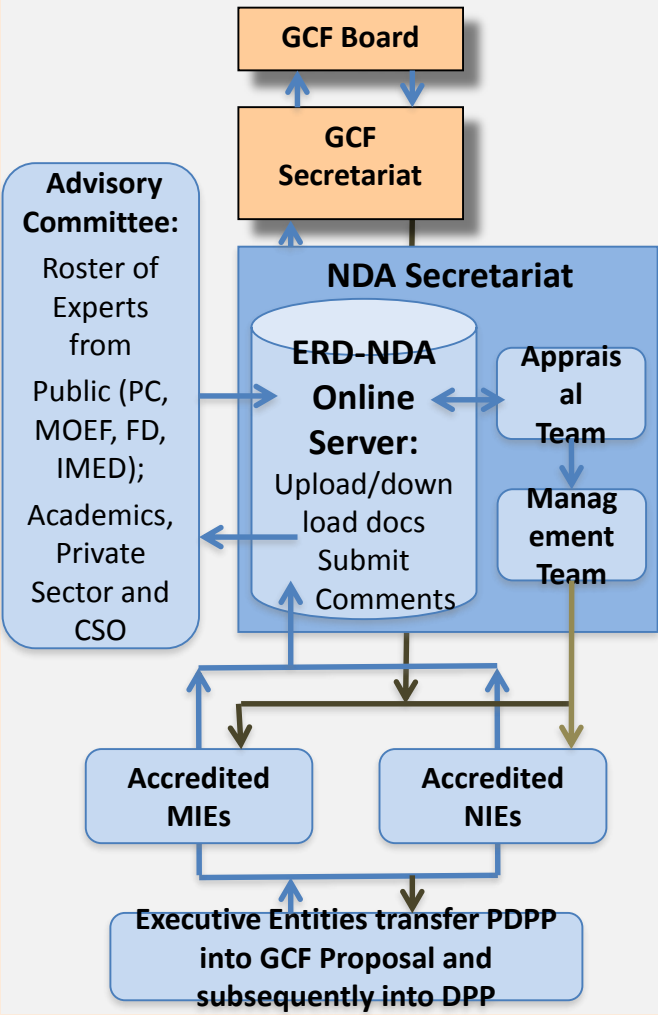
- The Philippines has taken strong stances to prioritize climate change issues on the **political agenda**
- Some ministries have developed an **understanding of the impacts** of climate change on the country's economies and livelihoods.
- Strong political willingness to address climate issues well as solid data basis have led to the crafting of a **comprehensive legal and policy framework** for climate change.
- **Convergence** between institutions is incipient.
- Institutional capacities for climate change at the **local level** are very limited.

(selection of findings)

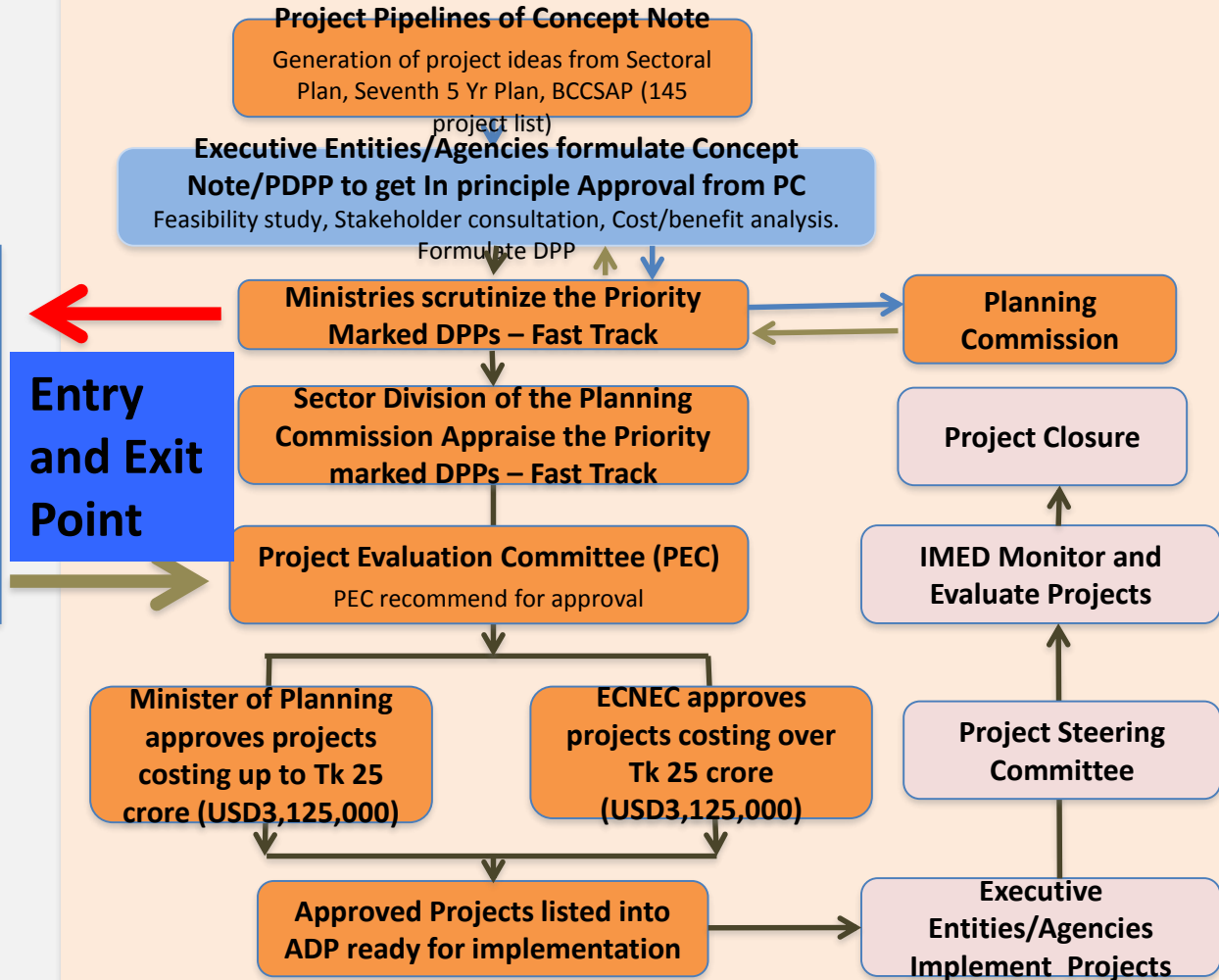
Example Bangladesh: NDA Institutional and Capacity Assessment – No-objection procedure: Aligning GoB and GCF Processes



NDA No-Objection Procedures



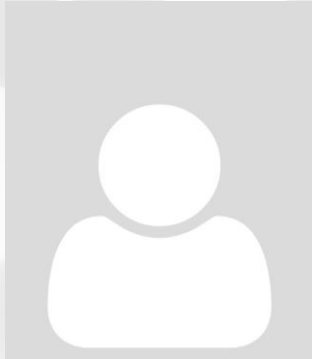
GoB Public Project Appraisal and Implementation System



Summary

- Capacity Development at three levels
- Technical Understanding of challenges are required, e.g. vulnerability assessment or mitigation potential
- Institutional Convergence often limited
- Integration into national and sub-national planning and budgeting processes challenging
- Whole-of-Government and whole-of-society approach for transition process

Contact



Bjoern Surborg

Principal Adviser and Cluster Coordinator
Climate Change and Disaster Risk Management

bjoern.surborg@giz.de



www.giz.de



https://twitter.com/giz_gmbh



<https://www.facebook.com/gizprofile/>

**Deutsche Gesellschaft für
Internationale Zusammenarbeit (GIZ) GmbH**

Registered offices
Bonn and Eschborn

Friedrich-Ebert-Allee 36 + 40
53113 Bonn, Germany
T +49 228 44 60 - 0
F +49 228 44 60 - 17 66

Dag-Hammarskjöld-Weg 1 - 5
65760 Eschborn, Germany
T +49 61 96 79 - 0
F +49 61 96 79 - 11 15

E info@giz.de
I www.giz.de