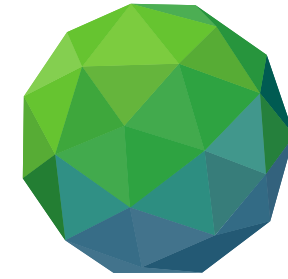


# FACILITATING ACCESS TO DEVELOPING COUNTRIES



GREEN  
CLIMATE  
FUND

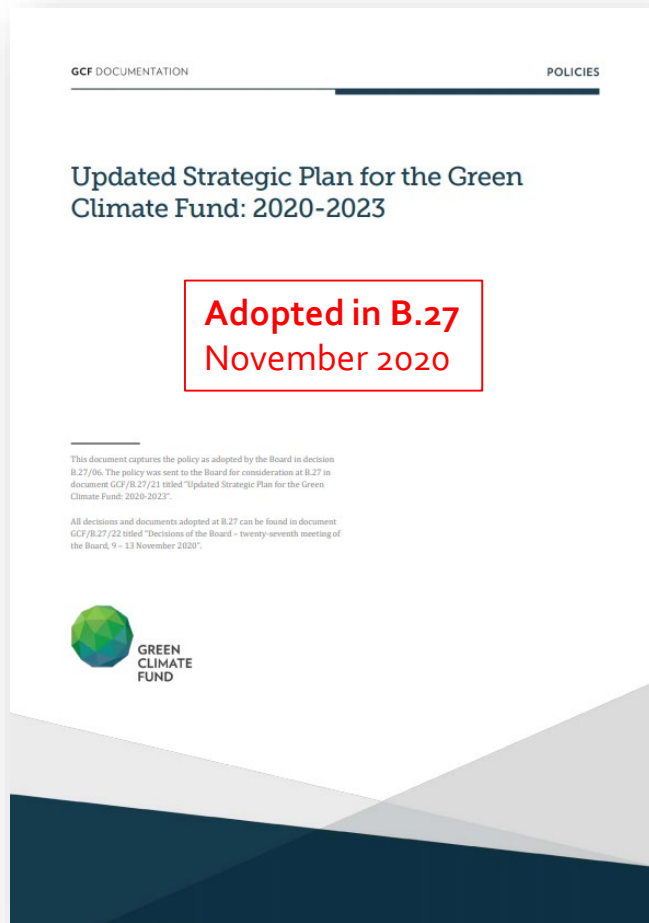
Theme III: Advancing action and support through partnerships

*WIM Executive Committee Outreach: Moving forward in averting, minimizing and addressing loss and damage*

14<sup>th</sup> September 2021

Juan Pablo Hoffmaister  
Multilateral Governance Manager

# GCF-1 STRATEGIC PLAN 2020-2023: AN OVERVIEW



GCF will contribute to the Paris Agreement goals, NDC implementation and global ambition

Deliver greater impact for developing countries compared to GCF's first programming period (IRM)

Portfolio targets for 2020-2023

Approach to programming

Agenda for efficiency and effectiveness

# GCF-1 PORTFOLIO TARGETS

- 50:50 balance between adaptation and mitigation
- Portfolio-level mitigation/adaptation outcomes exceed IRM
- Min. 50% adaptation funding to SIDS, LDCs and Africa, aim to build on IRM (69%)
- Significantly increase funding through DAEs
- Maximise private sector engagement, with PSF allocation exceeding 20%
- Significantly increase mobilised private finance

# GCF SUPPORT

- The **COP25** invited the GCF to continue providing financial resources for activities relevant to averting, minimizing and addressing loss and damage in developing country Parties, to the extent consistent with the existing investment, results framework and funding windows and structures of the Green Climate Fund, and to facilitate efficient access in this regard, and in this context to take into account the strategic workstreams of the five-year rolling workplan of the Executive Committee of the Warsaw International Mechanism for Loss and Damage associated with Climate Change Impacts (UNFCCC COP decision 12/CP.25 para 21).
- During the **B.25, in response to COP**, the Board decided to continue providing financial resources in accordance with its existing investment, results framework and funding windows and structures ([decision B.25/07](#))

Readiness and Preparatory Support Programme	Enhancing climate change resilience of health systems in seven CARICOM States (Addressing the CC challenges on health and plan an integrated action to protect health and promote sustainable development)
Project Preparation Facility	Melanesia Coastal and Marine Ecosystem Resilience to Climate Change Programme (Conducting feasibility reports/studies for EbA planning and forecasting)
GCF Funded projects and programmes	FP157: Coastal Resilience to Climate Change in Cuba through Ecosystem Based Adaptation - "MI COSTA" (Positioning EBA into development strategies and actions for integrated coastal zone management; and, enabling flexible risk management solutions for coastal populations and reducing their flooding risks)

# GCF-1 PROGRAMMING

Under the strategic priorities for 2020-2023, the GCF intends to strengthening **country ownership** of programming.

## Efforts oriented towards

Strengthening national planning and programming capacities

Ensuring GCF programming by country driven prioritization

Supporting access to national and regional DAEs



## Key actions

Re-focusing GCF country programming to translate NDCs, ACs, NAPs and national climate strategies into country-driven investments.

Improving access to Readiness and Project Preparation Support to help building lasting institutional capacity.

# GCF-1 PROGRAMMING DIRECTIONS

## Adaptation

- Greater scale projects and programmes
- Targeting most vulnerable countries
- Maintaining a significant share of grants for adaptation
- Increasing private sector programming in adaptation

## Direct access

- Almost fourfold compared to IRM for both private and public
- Increased diversity of DAE portfolio through a mix of adaptation and mitigation projects, use of instruments and project size

## Private sector

- Higher impact mitigation projects with potential for mobilization
- Increase in adaptation programming

# IMPACT AREAS & INTEGRATED RESULTS MANAGEMENT FRAMEWORK

- The Integrated Results Management Framework was approved during the 29<sup>th</sup> Board Meeting (GCF/B.29/12).

Reduced Emissions From:



Energy generation and access



Low-emission transport



Buildings, cities, industries and appliances



Forestry and land use

Increased Resilience of:



Most vulnerable people and communities



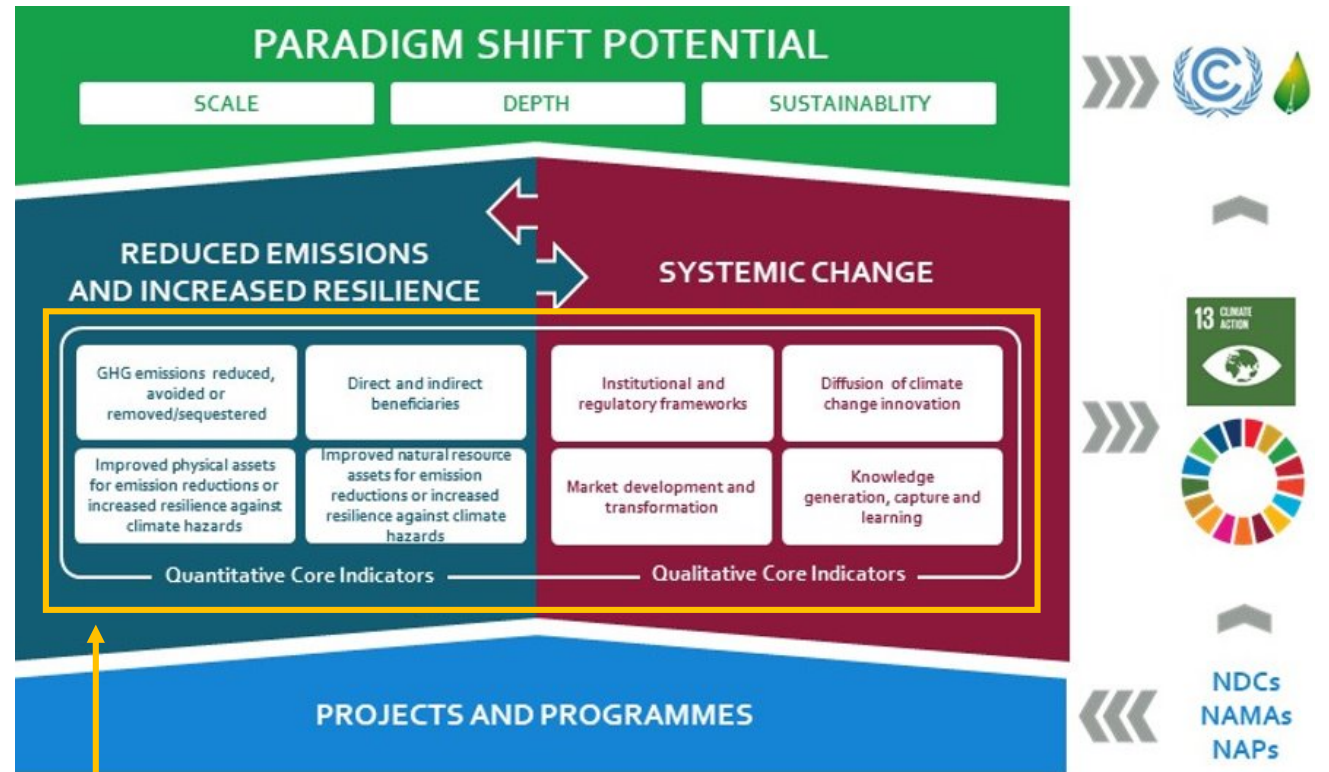
Health and well-being, and food and water security



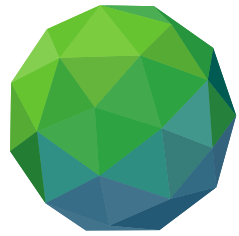
Infrastructure and the built environment



Ecosystems and ecosystem services



8 CORE INDICATORS



GREEN  
CLIMATE  
FUND

**Raising  
ambition.**  
**Empowering  
action.**



# STATUS OF THE PORTFOLIO

as of 1 July 2021

## TOTAL

PROJECT **\$8.8B** in **121** countries

READINESS **\$338M** in **140** countries

**USD 33.2B**

total portfolio with co-financing

**500.4**

million people with  
increased resilience

**1.8B**

tonnes of CO<sub>2</sub> eq.

## LAC

PROJECT **\$1.85B**

READINESS **\$102.0M**

## AFRICA

PROJECT **\$3.29B**

READINESS **\$110.6M**

## EASTERN EUROPE

PROJECT **\$0.391B**

READINESS **\$24.6M**

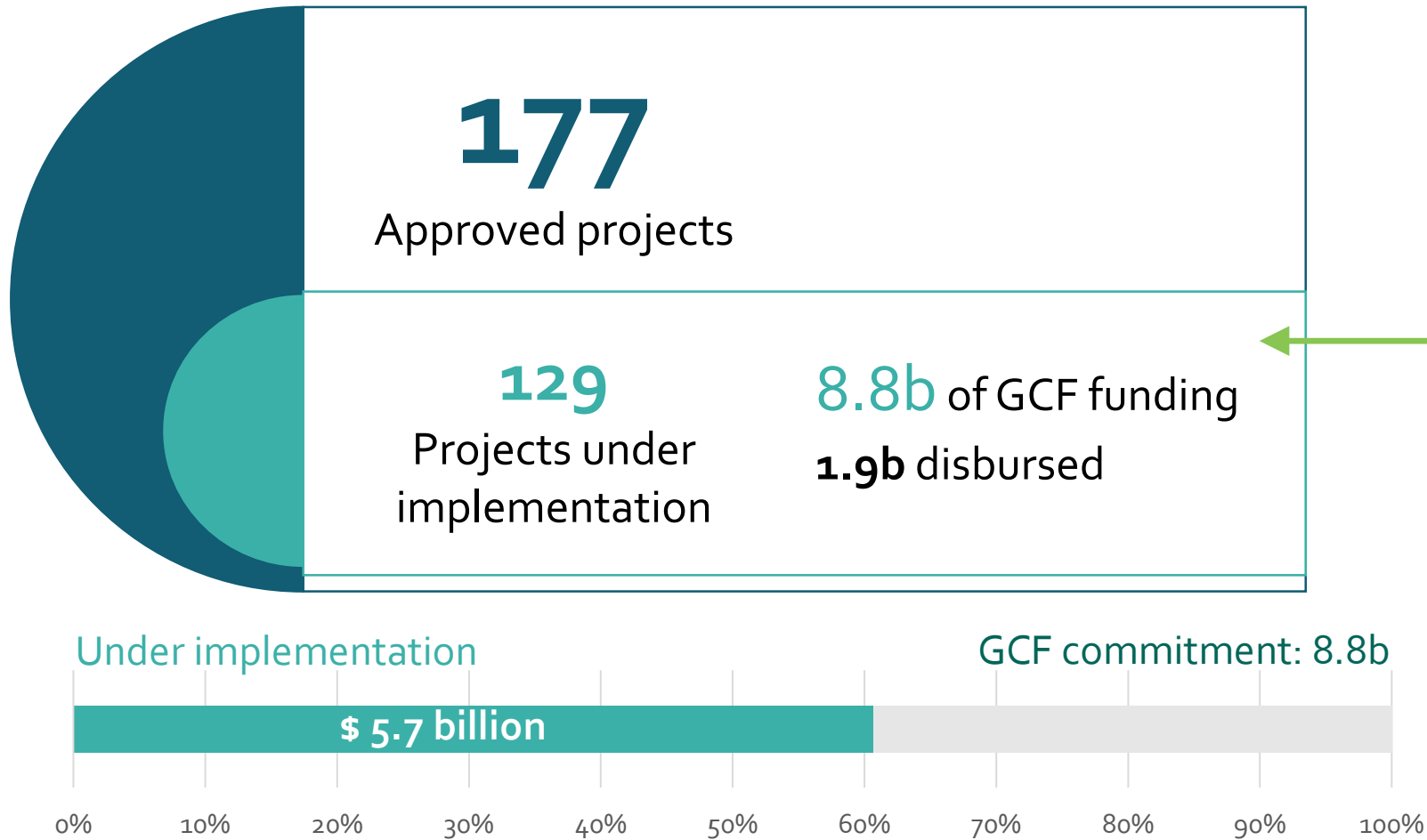
## ASIA-PACIFIC

PROJECT **\$3.32B**

READINESS **\$100.3M**

# STATUS OF THE PORTFOLIO

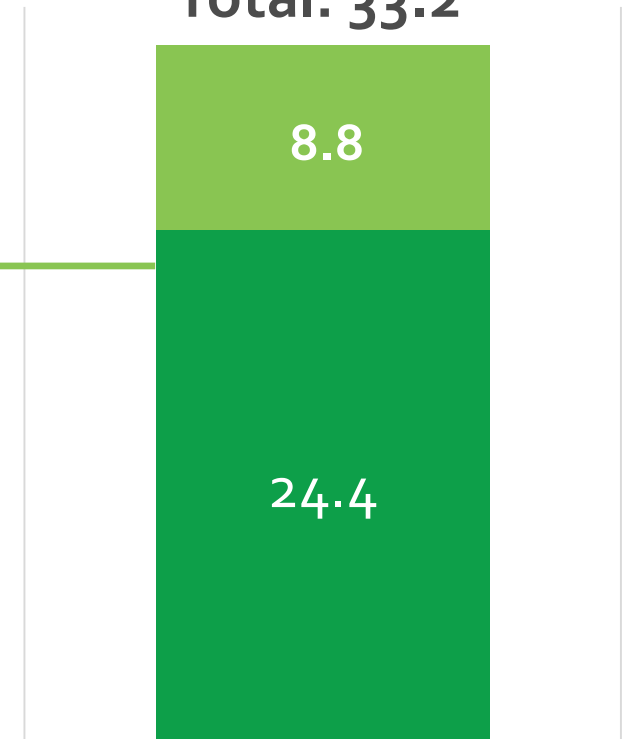
(as of 1 July 2021)



## VALUE OF PROJECTS IN BILLION USD

■ Co-Financing ■ GCF funding approved

**Total: 33.2**



# READINESS AND PREPARATORY SUPPORT PROGRAMME (READINESS)

*as of 1 July 2021*



**140**  
countries targeted