



Enhancing National Climate Adaptation Policies and Financing through the Broadened Water-Energy-Food (WEF+) Nexus Workshop

23 April 2024

Andiswa Nyongwana

Water and Climate Assistant Programme Coordinator



INTRA-ACP GCCA+ PROGRAMME An initiative of the ACP Group of States funded by the European Union's European Development Fund



GCCA+ in the SADC Region

5 Support universities and research centres from the SADC Region in the development of innovative solutions to climate change challenges.

1. Strengthen the capacity of SADC MSs to undertake regional and national adaptation and mitigation actions in response to the challenges caused by the effects of global climate change and climate variability

4. Assist to design pilot projects on adaptation in several Member States

The Intra African, Caribbean and Pacific (ACP) GCCA+ is a programme funded by the EU to increase the capabilities of SADC Member States and countries in the ACP region to mitigate and adapt to the effects of climate change, and have their voices better heard in international climate change negotiations.

2. Facilitate implementation of the provisions of the Paris Agreement on Climate Change in SADC

3. Facilitate sharing of knowledge and experience with other ACP regional organisations, including South-South Cooperation



THEMATIC AREAS



**Climate Smart
Agriculture (CSA)**



**Water, Energy &
Food (WEF)**



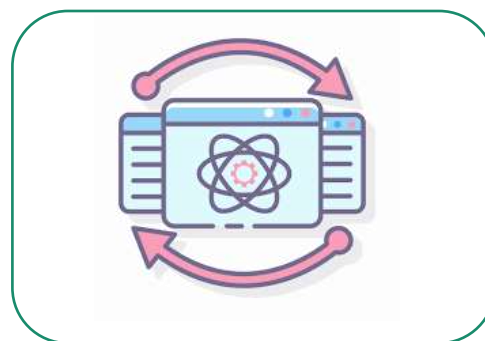
**Research &
Education**



**Ecosystem-based
Adaptation (EbA)**



Water



**Visibility &
Knowledge
Management**

Project Overview

WEF nexus tripartite (Zambia and Malawi):

- CCARDESA – Agriculture
- GWP – Water
- SACREEE – Energy

Aim:

- To strengthen the climate resilience of local communities in Zambia and Malawi through the WEF nexus approach

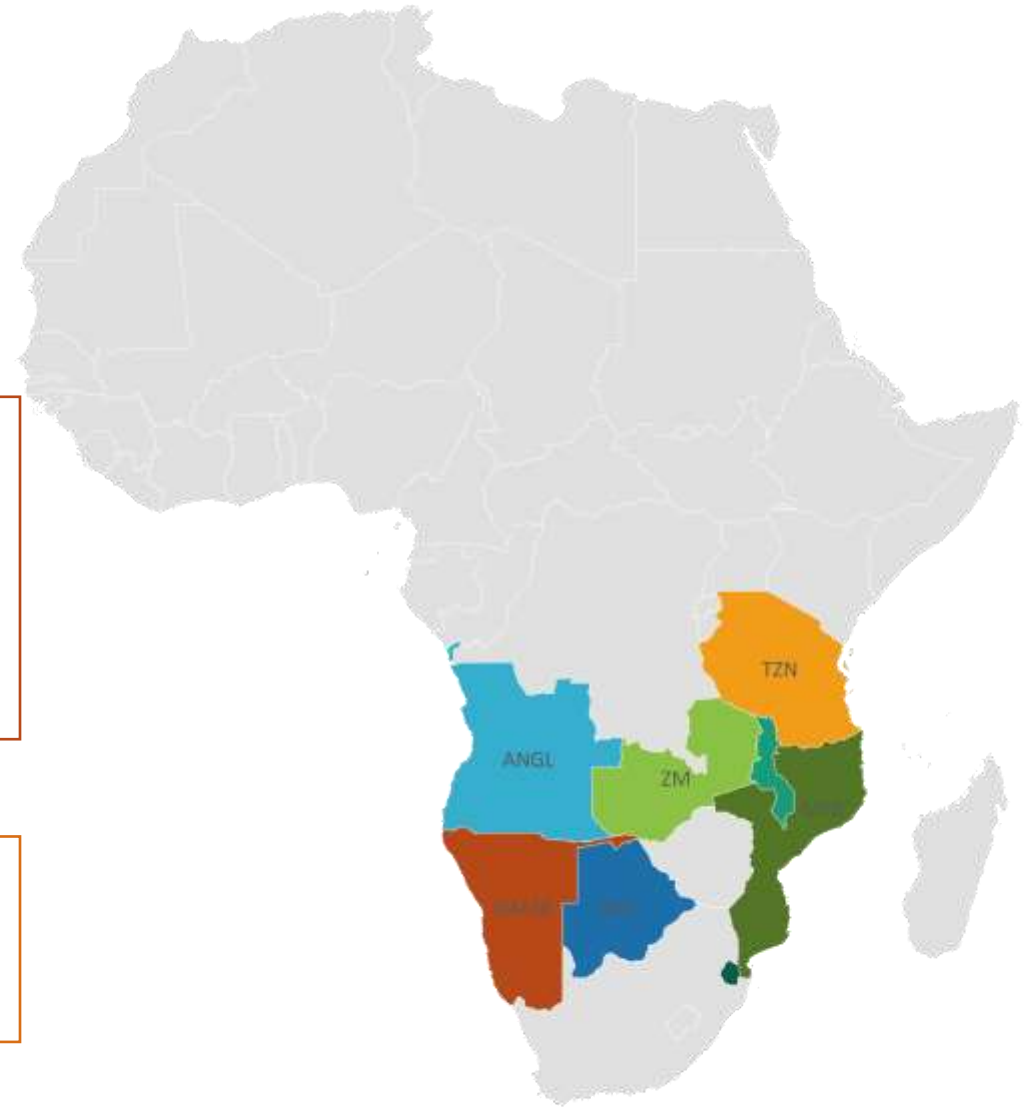
Duration:

- 24 months

Project Area:

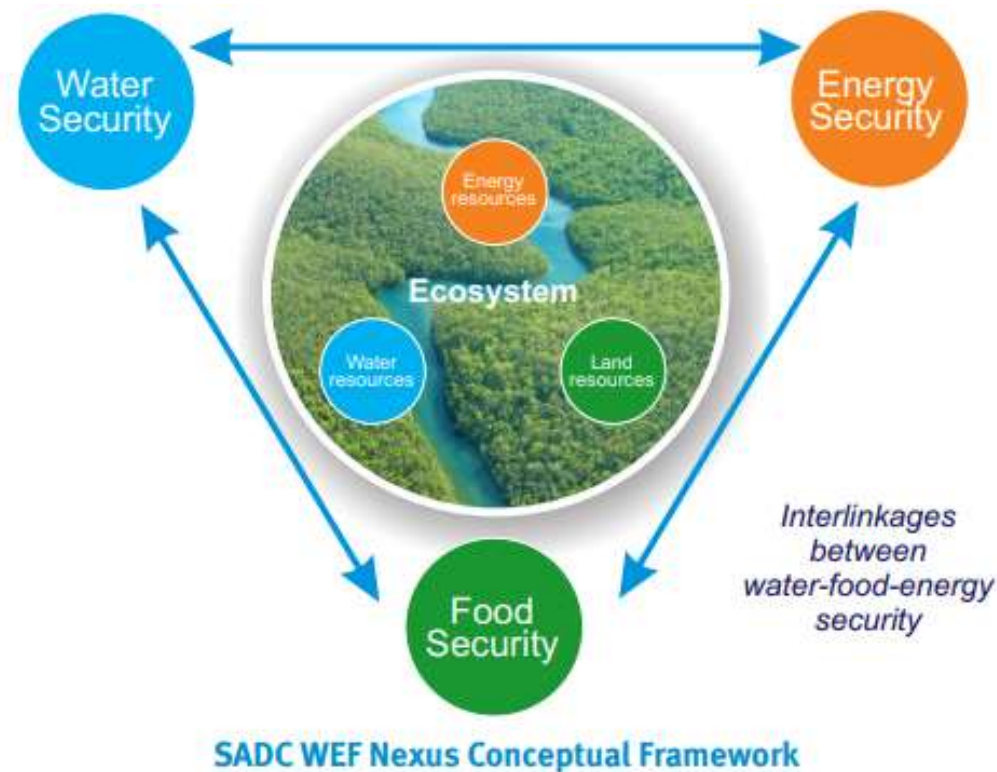
- Kamuyisa, Malawi and Kapatazi, Zambia

GCCA+ WEF Demo Countries



Objectives of the WEF nexus

- i. Build on the SADC Regional Nexus Approach.
- ii. Demonstrate the WEF Nexus approach to communities.
- iii. Document lessons learnt on the demonstration of the WEF nexus approach.





Criteria for site identification

The sites were selected based on the site selection criteria checklist developed by the ROS. The following are some of the key aspects on the checklist:

- Off-grid area
- Land availability and use
- Water availability and water resource management
- Group Organization and Governance
- Energy Sources and Technologies

WEF Demonstration project design process

1. Project buy-in .
2. Site selection and land allocation
3. Baseline survey – to profile the area and identify training needs including Gender equality and social inclusion
4. Formulation of structures and guidelines Training of farmers



Project - Malawi & ZAMBIA

- SACREEE, CCARDESA and GWP Introduced the project to the Governments of Malawi and Zambia through the ministries responsible for Energy (MoE)
- MoE conducted internal consultations with other relevant ministries at both national and district level including; Water, Irrigation, Agriculture, Environment, Community Development, Fisheries, etc
 - Selecting a district and area that is ideal for the WEF Nexus pilot project
 - Pre-selection of sites within the district
- The selected sites:
 1. Malawi: Dedza district, Kamuyisa Village
 2. Zambia: Kazungula district, Katapazi area





- Local project officers
- Regular site visits and stakeholder engagement
- Ministries of Agriculture, Water and Energy engaged.
- Solar powered irrigation system installed in Katapzi and Kamuyusi.
- Nearby school supplied with electricity in Kamuyusi and battery charging station powered
- Regular site inspections
- African eggplant, tomatoes, cabbage and maize were planned

Katapazi, Zambia





Kamuyisa, Malawi

Lessons learnt

- WEF Nexus approach is the way to go - high national and community expectations for a large-scale rollout of the project.
- Programming for a WEF Nexus project requires a lot of time and good coordination among all stakeholders.
- Requires the involvement of several stakeholders belonging to different government departments and institutions.
- Allocate enough time to see the impacts of the interventions, a minimum of 5 years is proposed.
- Capacity Development - To enable the project's long-term impact, there is a need to strengthen the capacity development of all the project's intervention areas within the community structures.





Thank You All

