

# Regional NAP Expo

## Advancing Financing and Implementation of GGA Aligned NAPs

Climate Week 3 – Yeosu, Republic of Korea  
Least Developed Countries Expert Group (LEG)



# Deployment Architecture

## Financing for Implementation

Regional NAP Expo  
21 to 25 April 2026





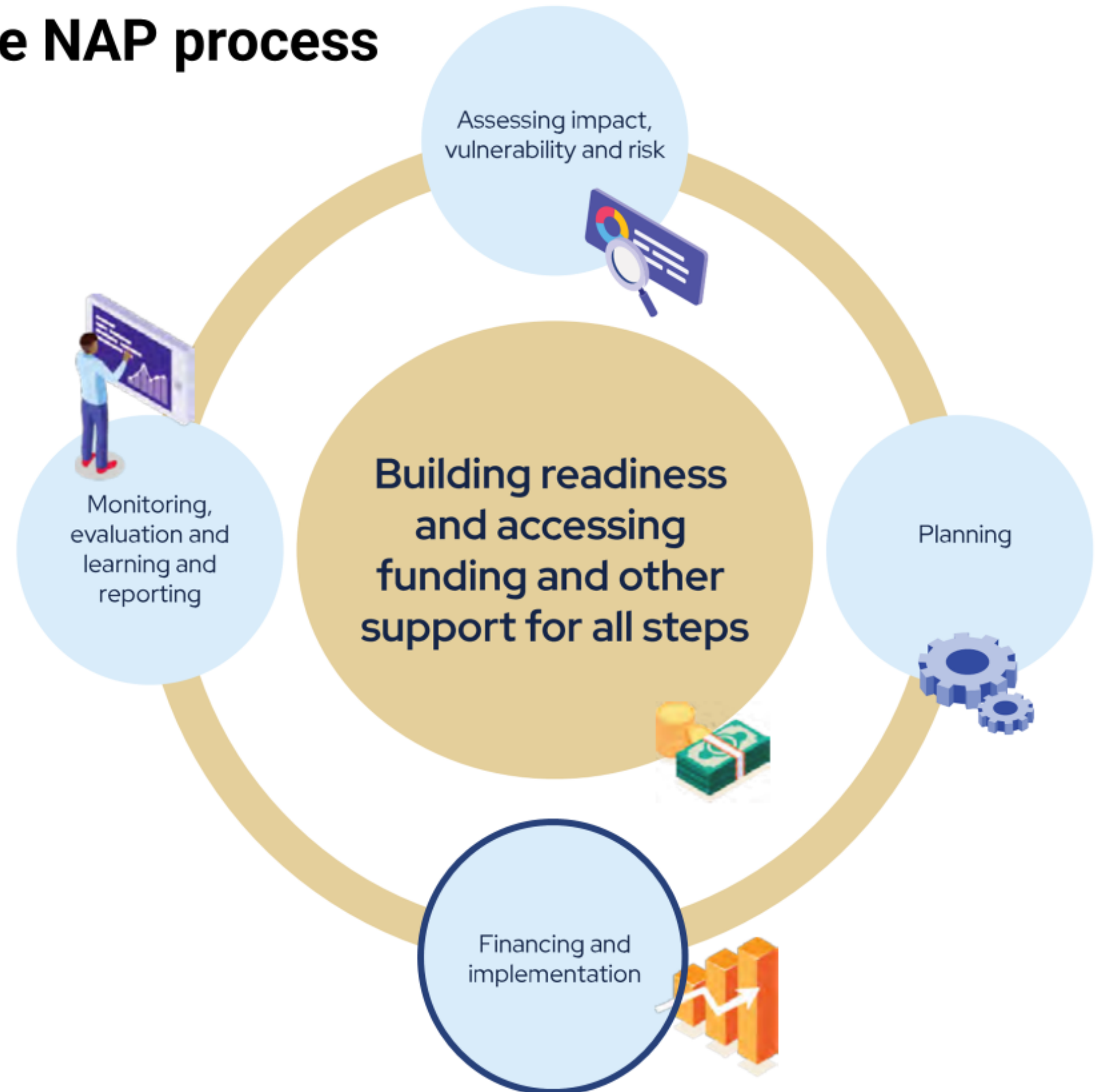
# The five modules and steps of the NAP process

- ❑ The four elements of the NAP process and adaptation cycle components are merged into a set of **five modules** and steps, designed to accommodate both while aligning with the GGA framework
- ❑ The modules are iterative and interconnected, with many steps addressed in parallel

---

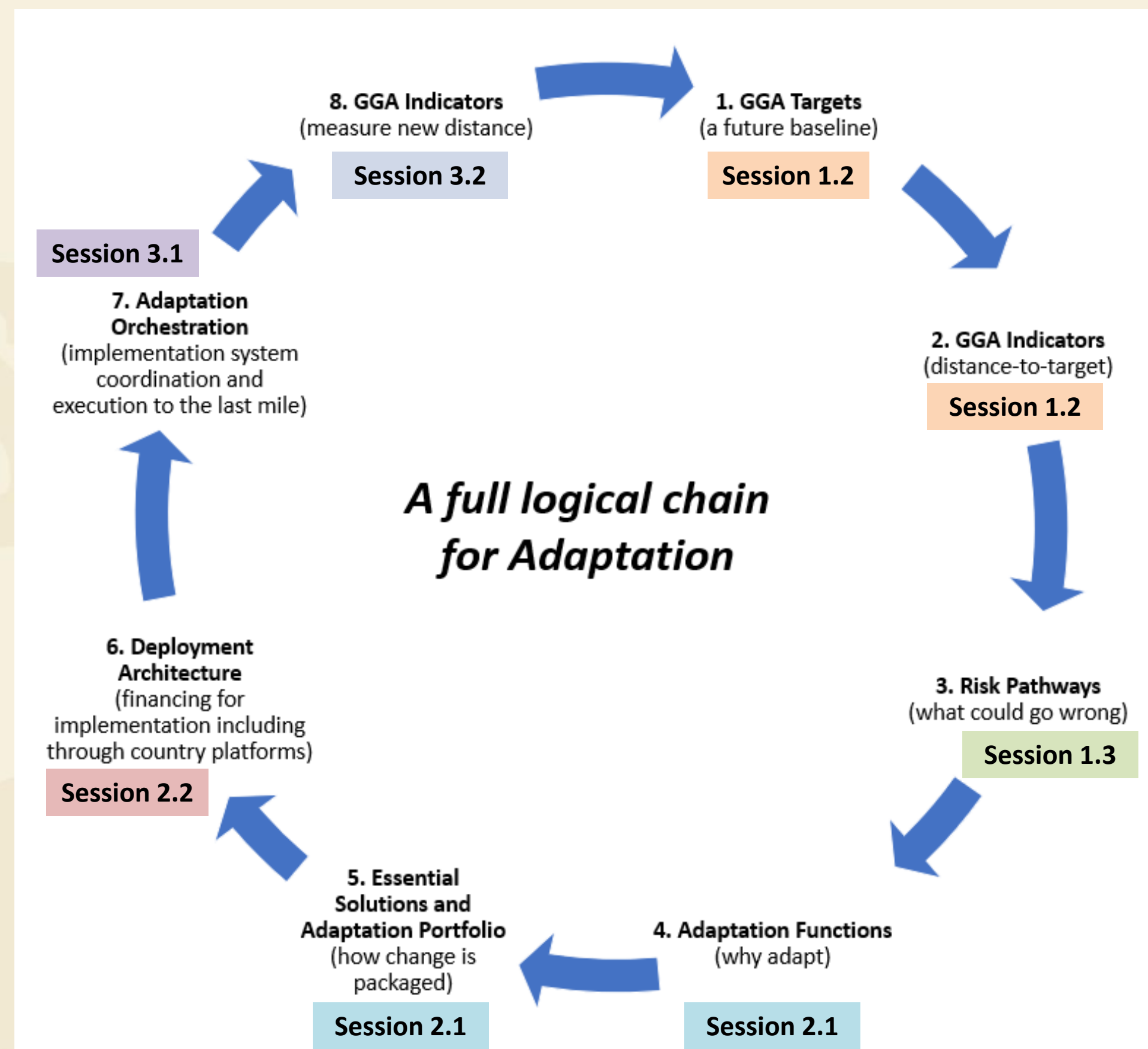
## Module C: Financing and implementation

- Bridges the gap between planning and implementation
- Identify/mobilize funding across different sources and windows
- Implement adaptation solutions



# Regional NAP Expo – Six Technical Sessions

1. **GGA framework targets and indicators** set the destination (1.2)
2. **Risk pathways** reveal what stands in the way (1.3)
3. **Adaptation functions** connects risk to the rationale for action through NAPs to produce **concrete adaptation solutions** (2.1)
4. **Deployment architecture** shows how to finance and structure that action (2.2)
5. **Adaptation orchestration** ensures it is coordinated and delivered (3.1)
6. **National MEL systems** track progress and feed learning into the next iteration (3.2)



## Saturday, 25 April: Coordination, MEL, and Closing

- **Session 3.1** focuses on adaptation orchestration – coordinating across ministries, local governments, climate funds, donors, and the private sector.
  - ❑ Participants will develop a phased NAP implementation plan through group exercises
  
- **Session 3.2** explores how GGA indicators can be operationalized through national MEL systems
  - ❑ Co-organized by the Adaptation Committee and the UNFCCC secretariat

**The Regional NAP Expo closes with reflections and key messages from the LEG**

## Contact Details & Key links

### Least Developed Countries Expert Group (LEG)

E-mail: [leghelp@unfccc.int](mailto:leghelp@unfccc.int)

### Important links

- ❑ LEG: <http://unfccc.int/LEG>
- ❑ NAP central: <https://napcentral.org>