

# TAJIKISTAN'S 1<sup>ST</sup> BIENNIAL UPDATE REPORT

---

FACILITATIVE SHARING  
OF VIEWS WORKSHOP  
NOVEMBER 2021

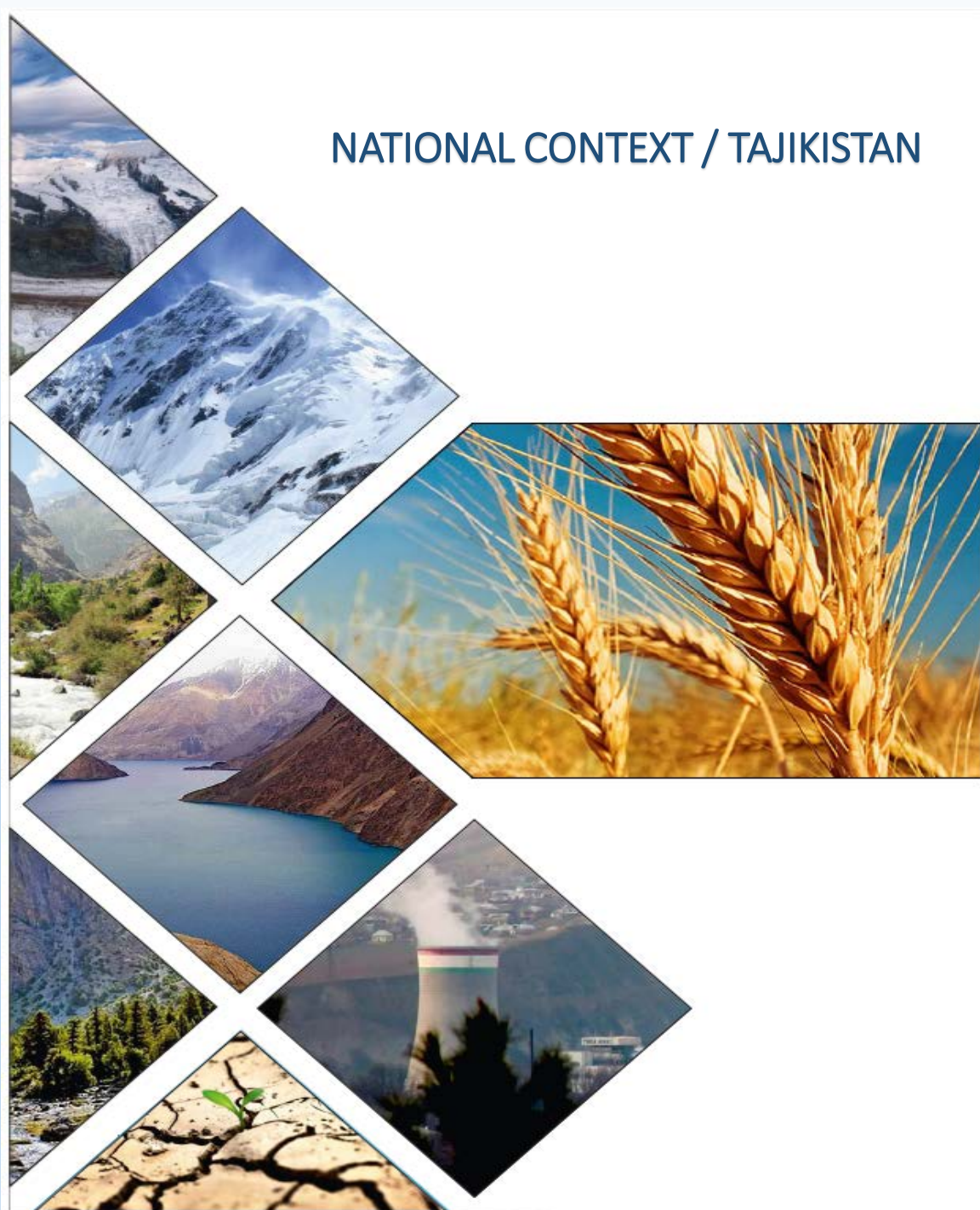


## NATIONAL CONTEXT / TAJIKISTAN

POPULATION: 9,2 mln. of population

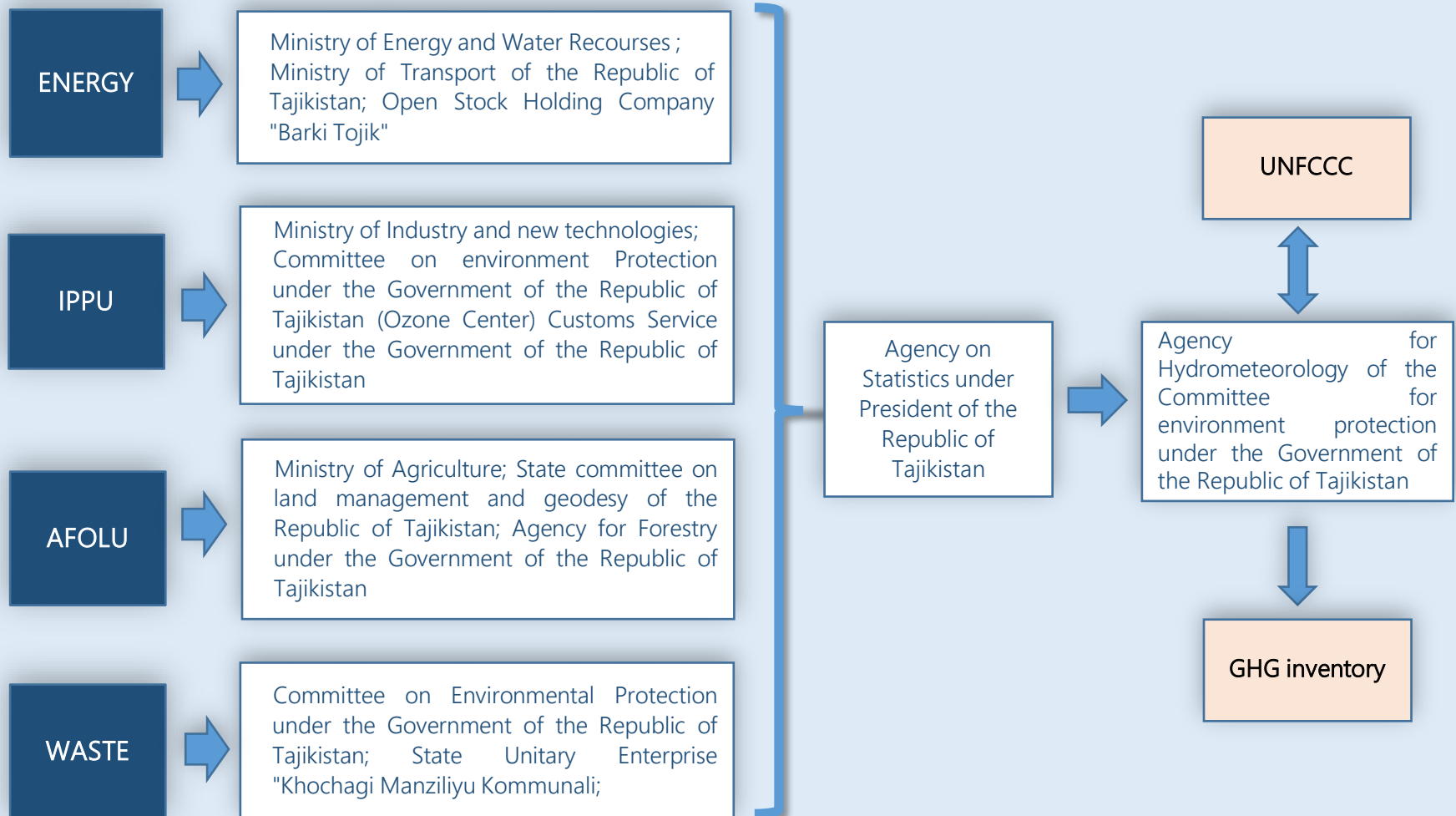
SURFACE: 142.6 thousand km<sup>2</sup>

- Mountains occupy 93% of the territory, elevations range from 300 meters to 7,495 meters.
- Forests only take up 3% (412,000 ha) of the land area of the country, 22% protected areas.
- The share of water resources in the Central Asian Region is more than 60%. Glaciers, total area of 8,476 km<sup>2</sup>, total volume is 567 km<sup>3</sup>.
- Hydropower : total potential 527 bln. KWh, cost-effective potential 317 bln. KWh, average production 16,5 bln. KWh.
- 2014 total emissions : 9,1 mln. tn. CO<sub>2</sub> eq. , per capita 1,0 t CO<sub>2</sub> eq.
- 70% population lives in rural area, GDP per capita \$ 840 (2019).
- Affected by extreme events and dependent on natural resources, is highly vulnerable to climate variability and climate change impacts. Tajikistan's high dependence on climate-sensitive sectors of the economy is a factor that increases the country's vulnerability to climate change and extreme weather events.



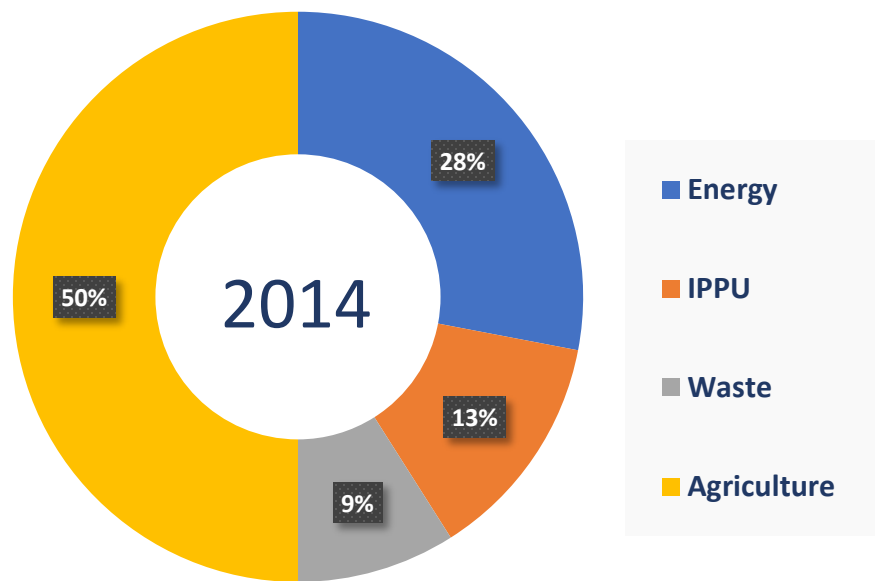
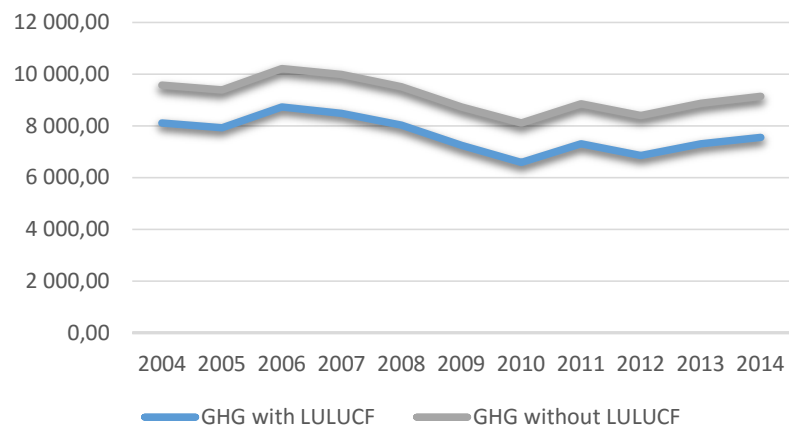
# NATIONAL CONTEXT

## 1 BUR INSTITUTIONAL ARRANGEMENTS



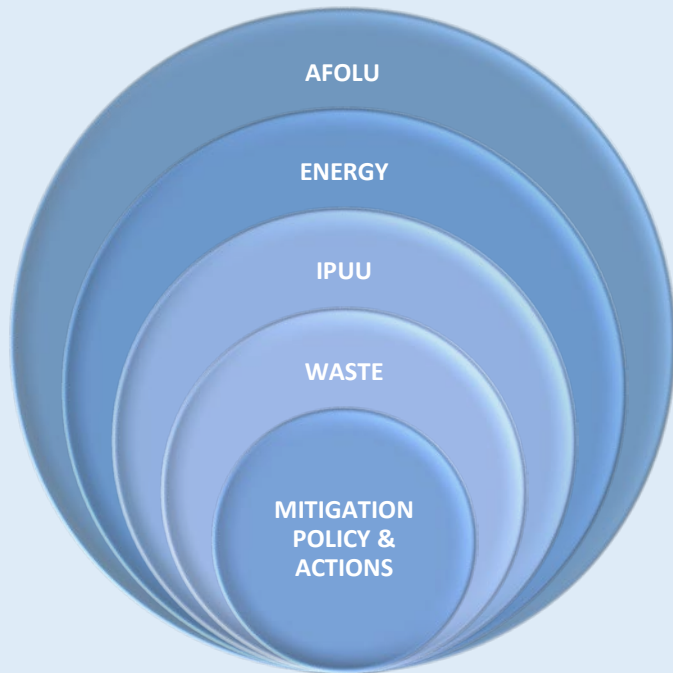
# GHG INVENTORY 2014

IPCC CATEGORY CODE	IPCC CATEGORY	GHG
3.A.1	ENTERIC FERMENTATION	CH <sub>4</sub>
4.A	SOLID WASTE DISPOSAL	CH <sub>4</sub>
1.A.4	OTHER SECTORS – SOLID FUEL	CO <sub>2</sub>
3.A.2	MANURE MANAGEMENT	CH <sub>4</sub>
2.A.1	CEMENT PRODUCTION	CO <sub>2</sub>
1.A.4	OTHER SECTOR – LIQUID FUEL	CO <sub>2</sub>
1.A.1	ENERGY – LIQUID FUEL	CO <sub>2</sub>
3.C.4	DIRECT N <sub>2</sub> O EMISSIONS FROM MANAGED SOILS	N <sub>2</sub> O
2.C.3	ALUMINUM PRODUCTION	PFCs
1.A.2	MANUFACTURING INDUSTRIES AND CONSTRUCTION – LIQUID FUEL	CO <sub>2</sub>
1.A.1	ENERGY – SOLID FUEL	CO <sub>2</sub>
2.C.3	ALUMINUM PRODUCTION	CO <sub>2</sub>
1.A.3.b	ROAD TRANSPORT	CO <sub>2</sub>
3.C.7	RICE CULTIVATIONS	CH <sub>4</sub>



# MITIGATION ACTIONS AND EFFECTS

## PRE-2020



## POST-2020

### UPDATED NDC OF TAJIKISTAN

#### UNCONDITIONAL TARGET

- emissions cap of 60 -70% of existing GHG emissions in 1990 level by 2030, which stands at 21.32 to 24.87 MtCO<sub>2</sub>eq by 2030, or 1.9 to 2.2 tCO<sub>2</sub>eq per capita.

#### BASE YEAR

- Net GHG emissions of Tajikistan in 1990 estimated at 35.53 MtCO<sub>2</sub>eq.

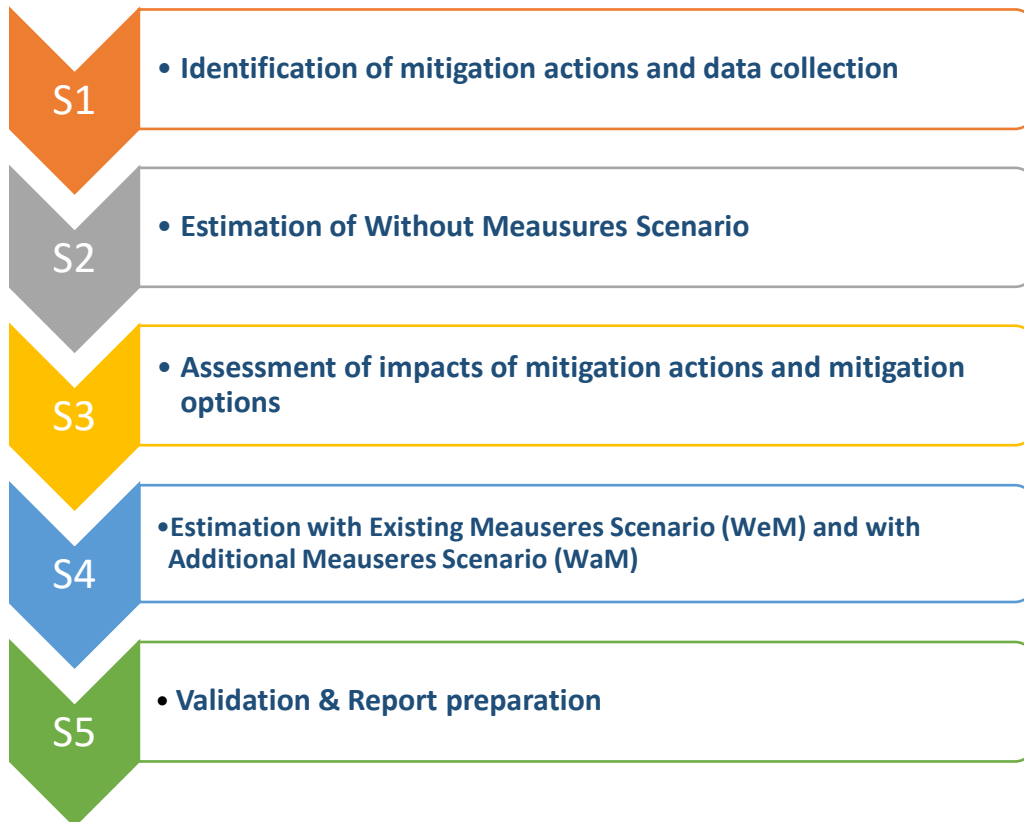
#### CONDITIONAL TARGET

- emissions cap of 50 -60% compared to the 1990 level by 2030, which stands at 17.76 to 21.32 MtCO<sub>2</sub>eq by 2030, or 1.5-1.9 tCO<sub>2</sub>e per capita if provided access to affordable financial resources, technology transfer and technical cooperation.

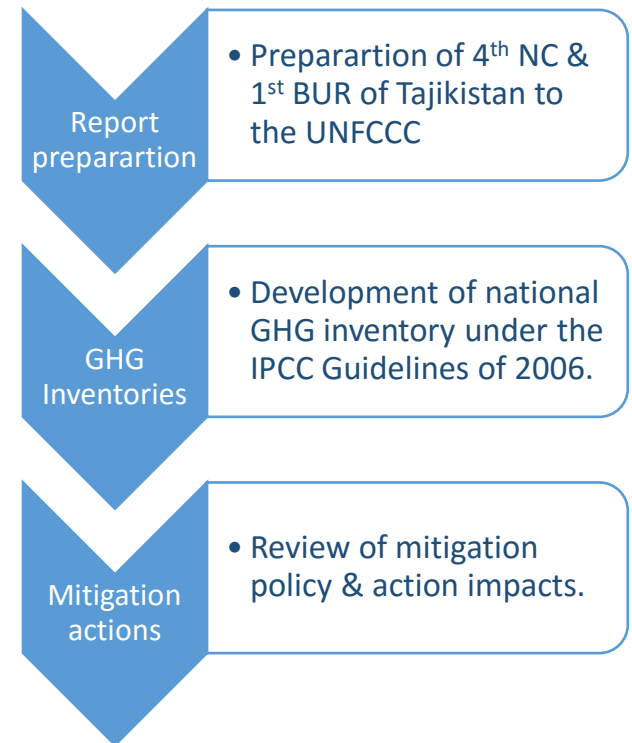
- National Development Strategy (NDS) of the Republic of Tajikistan until 2030;
- Mid-Term Development Program (MDP) of the Republic of Tajikistan for the period of 2021-2025;
- National Strategy for Adaptation to Climate Change in the Republic of Tajikistan until 2030
- National cross-sectorial long-term strategies, national programs and regulations of the Republic of Tajikistan.

# Support received and needed (finance, technology, capacity building)

## Support needed



## Support received



## Transition to ETF

The Government of the Republic of Tajikistan has outlined the following stages in order to improve the current Measurement, Reporting and Verification (MRV) system and a transition to ETF:

2020 - 2030

The first stage will take place in 2020-2025. and its main goal will be to improve the current methodological and institutional framework for the implementation of the MRV system with the involvement of key sectors of the economy.

The second stage will take place between 2025-2030 and its main goal will be the adoption of regulatory framework which aims to improve the MRV system of GHG;

The third stage will start in 2030. It is expected that the obligation to submit reports on GHG emissions will be extended to all entities whose emissions surpass 50 thousand tons of CO<sub>2</sub>-eq per year.

THANK YOU !