

FACILITATIVE SHARING OF VIEWS SAINT KITTS AND NEVIS

Bonn, Germany
20 June 2025

Cheryl Jeffers



Presentation Outline

National Context



GHG Inventory



Mitigation Actions and Effects



Support Needed and Received



ETF Transition and Implementation

National Context



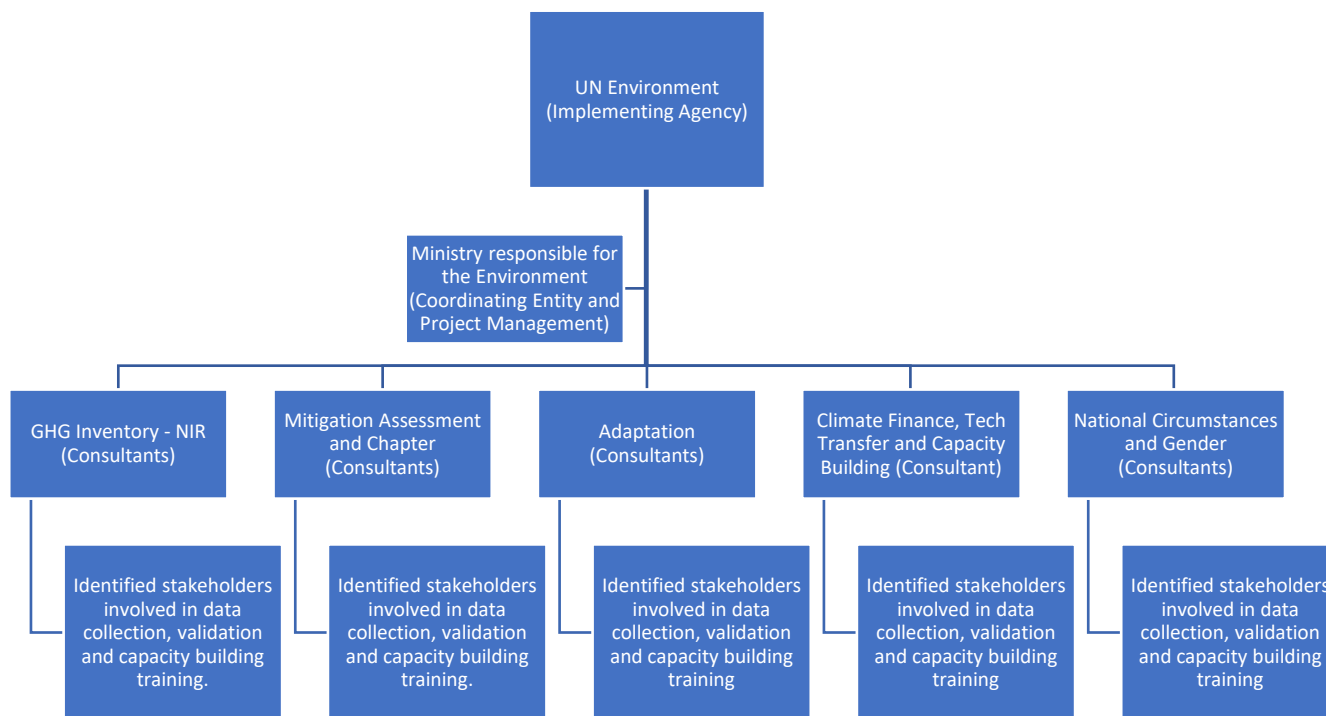
A combined area of 269 km²

- Classified as tropical marine:
 - A mean annual temperature of approximately 27°C (80.6°F).
 - Dry season (December to April)
 - Wet season (May – November)
- Population – 51,320
- Economy- heavily dependent on revenues from the tourism industry, construction and agriculture

Saint Kitts and Nevis is particularly vulnerable to the adverse impacts of climate change due its size, geographic location and its strong economic reliance on climate-sensitive sectors.



BUR Institutional Arrangements



Key Stakeholders included:

Energy Unit, including utility companies

Statistics Departments

Solid Waste Management Agency

Department of Environment

Departments of Agriculture

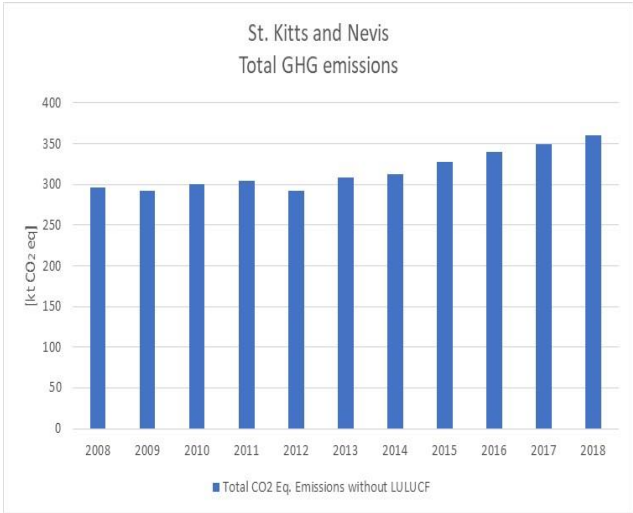
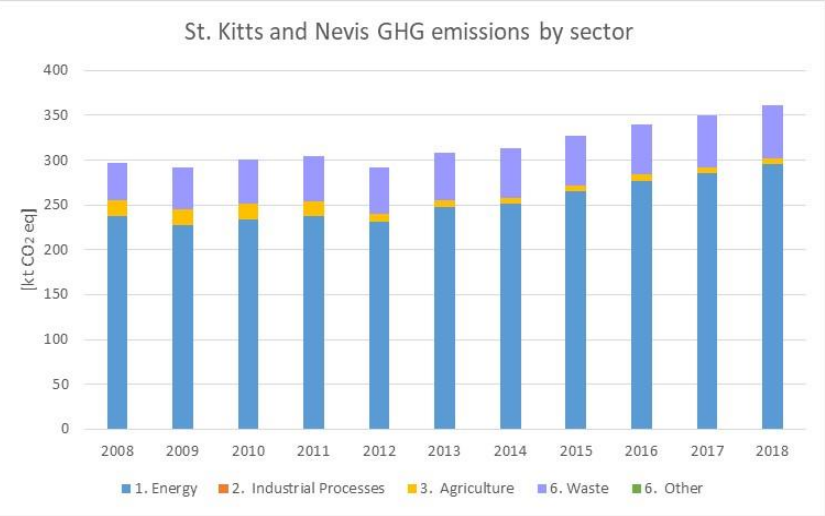
Customs & Excise Department

Marine Resources

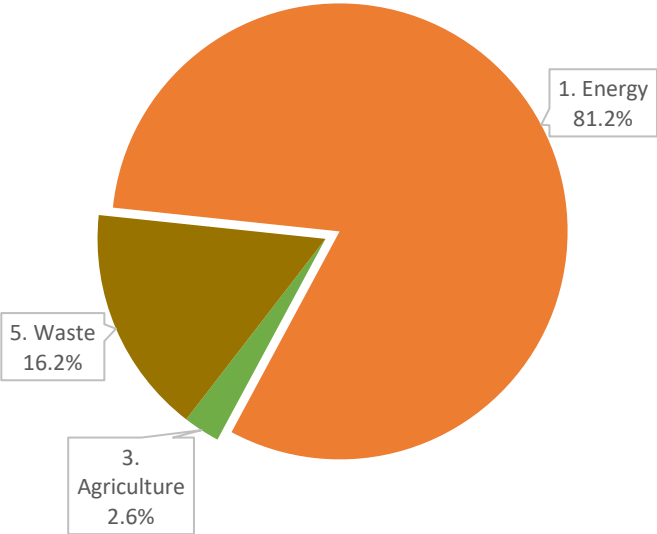
Met Services

Disaster Management Agencies

Saint Kitts and Nevis 2018 GHG Inventory



St. Kitts and Nevis
GHG emissions by sectors (2018)



Mitigation Actions and Effects

Updated NDC target aims to reduce economy-wide CO2 emissions by 61% by 2030, compared to base year 2010 GHG emission values. This is based on achieving 100% renewable energy in electricity generation and increasing the share of EV in the national fleet to at least 2%.

NDC Implementation Plan was developed with key activities from 4 outcomes:

- **Outcome 1: Emissions from electricity generation are reduced through adoption of renewable energy**
- **Outcome 2: Electricity consumption reduced through energy efficiency measures.**
- **Outcome 3: Reduced emissions from the transport sector.**
- **Outcome 4: Enhancement of Resilience.**

Mitigation Strategy

ACTIONS

18 mitigation actions were identified from the following areas:

Energy Demand (5)

Electricity Generation (7)

Transport (3)

IPPU (1)

Waste(1)

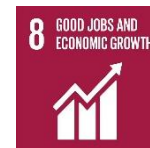
Agriculture (LULUCF) (1)

15 mitigation actions were modelled using Low Emissions Analysis Platform (LEAP)

Three Scenarios included:

- Baseline
- Mitigation
- Additional mitigation

CO-BENEFITS



Support Received and Needed

Financial Support, Technical Assistance & Capacity Building
Received



An indicative cost of USD 878 million is required to respond to the mitigation and adaptation measures highlighted within the updated NDC

NDC
PARTNERSHIP



GREEN
CLIMATE
FUND



ETF Transition and Implementation

Work has begun in preparing the BTR1 and 4NC

Updating its National Climate Change Policy

Report on MRV Framework for the electricity and transport subsectors

Developing a Loss and Damage Strategy

Draft legal arrangements to institutionalize the MRV framework for the electricity generation and transport subsector

Training on developing appropriate indicators for reporting on NDC progress achieved



Thank You!

