

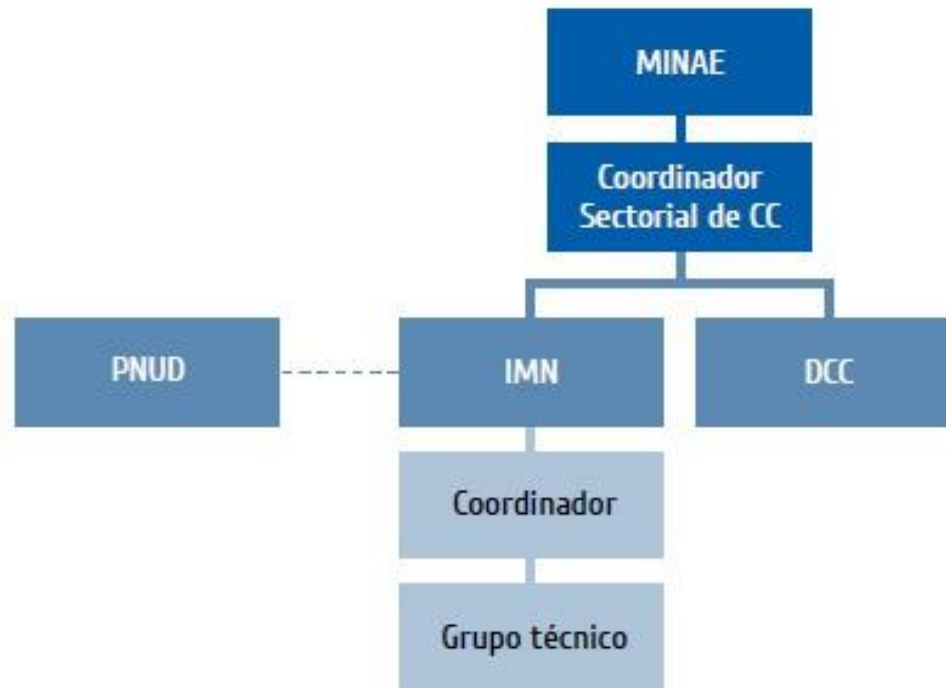
FACILITATIVE SHARING OF VIEWS COSTA RICA

1/06/2021



National context

Institutional arrangements



GHG Inventory: Methodology

IPCC 2006



- 1990, 1996, 2000, 2005



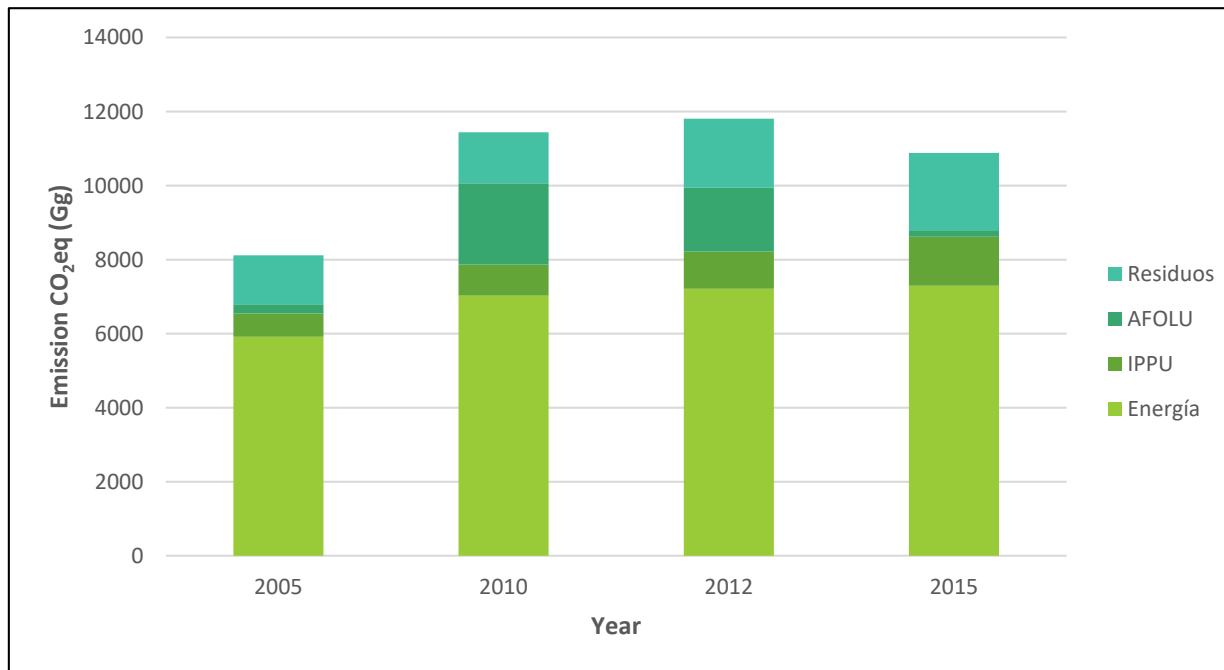
CO₂ CH₄ N₂O SF₆ HFCs

GHG Inventory: Total net emissions

Sector	Emissions (Gg CO ₂ eq)
Energy	7297,36
IPPU	1320,3
AFOLU	179,41
Waste	2084,61
Total	10881,68

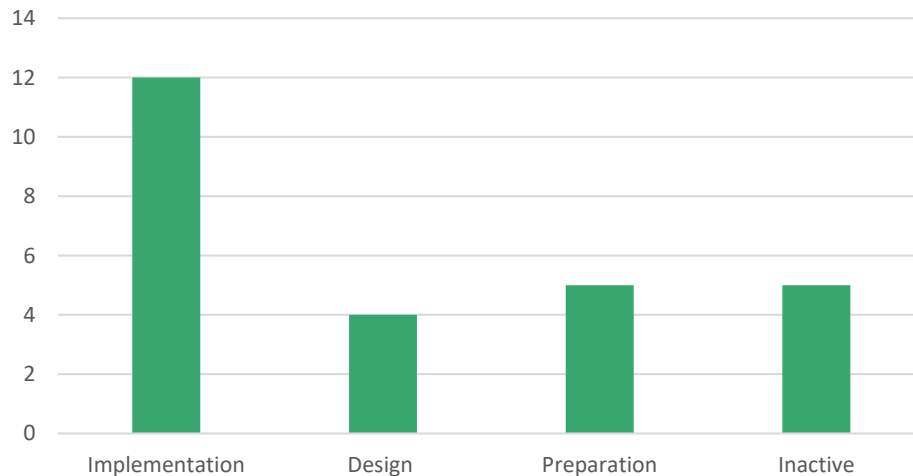


GHG Inventory: Emissions trends



Mitigation actions and effects

Mitigation actions included in the II BUR

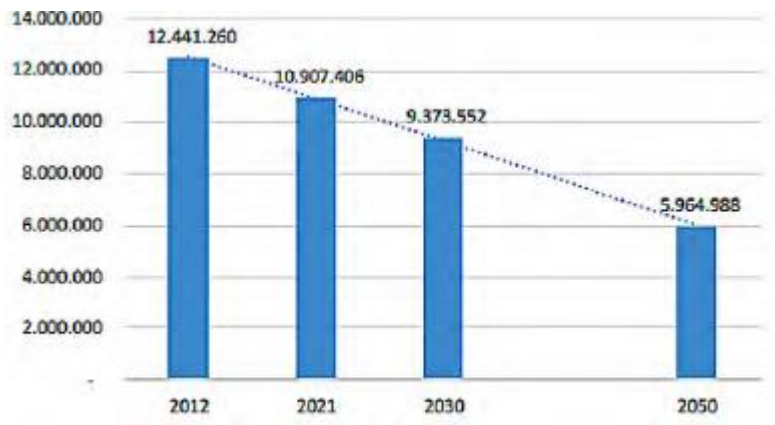


- NDC
- National Carbon Neutrality Program (PPCN)
- Coffee NAMA
- Livestock NAMA

Mitigation actions and effects

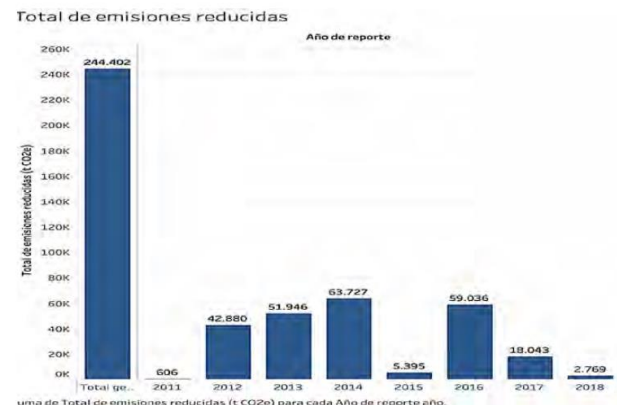
2015 NDC

- Economy wide target: 9 374 000 ton of CO₂e
- Progress: GHG emissions in 2015 were 10.881.680 t CO₂e



NATIONAL CARBON NEUTRALITY PROGRAM (PPCN)

- The organizational category reported reductions of 244 402 tons of CO₂e from 2011 to 2018
- By 2019 the municipality category had 6 local governments enrolled.



Mitigation actions and effects

COFFEE NAMA

- Objective: reduce GHG emissions and improve the coffee production technologies
- Project started in 2011 and had support of several donors: BID-FOMIN, Germany and UK and the NAMA Facility
- Results: over 600 farmers trained, almost 13 000 hectares producing low carbon coffee

LIVESTOCK NAMA

- Objective: reduce GHG emissions and improve the farm technologies
- Phases: Pilot (ended on 2018), first scaling up (2019-2022), second scale up (2022-2030)
- Results: more than 600 farms implementing NAMA-recommended technologies

Support needed

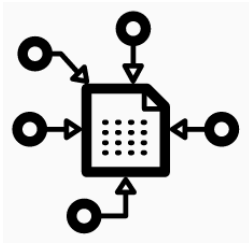
Key necessities:

- Financial resources, particularly grant-based financing, is critical to enable a green recovery in the aftermath of the COVID-19 pandemic.
- Market access to zero emissions technology, especially relating transport, energy, energy efficiency, waste management and HVAC.
- Support for long-term, continuous data collection and primary analysis efforts.
- Capacity building to expand and strengthen data-driven decision policy making,

Transition to ETF

¿What is the National Climate Change Metrics System?

Platform that integrates the monitoring and reporting of climate action in order to promote efficiency and improve decision making based on data and analysis,



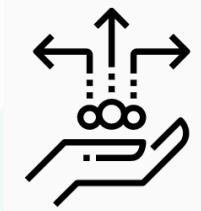
Capture



Processing



Reporting



Share and visualize



Open data

SINAMECC and the reporting under the Enhanced Transparency Framework of the Paris Agreement

