

The background of the slide is a photograph of a solar farm at dusk or dawn. Rows of solar panels are visible in the foreground, receding into the distance. In the sky above the solar panels, a small airplane is visible, flying from left to right. The overall lighting is dim, with a dark blue and black sky.

FACILITATIVE SHARING OF VIEWS

ANTIGUA AND BARBUDA

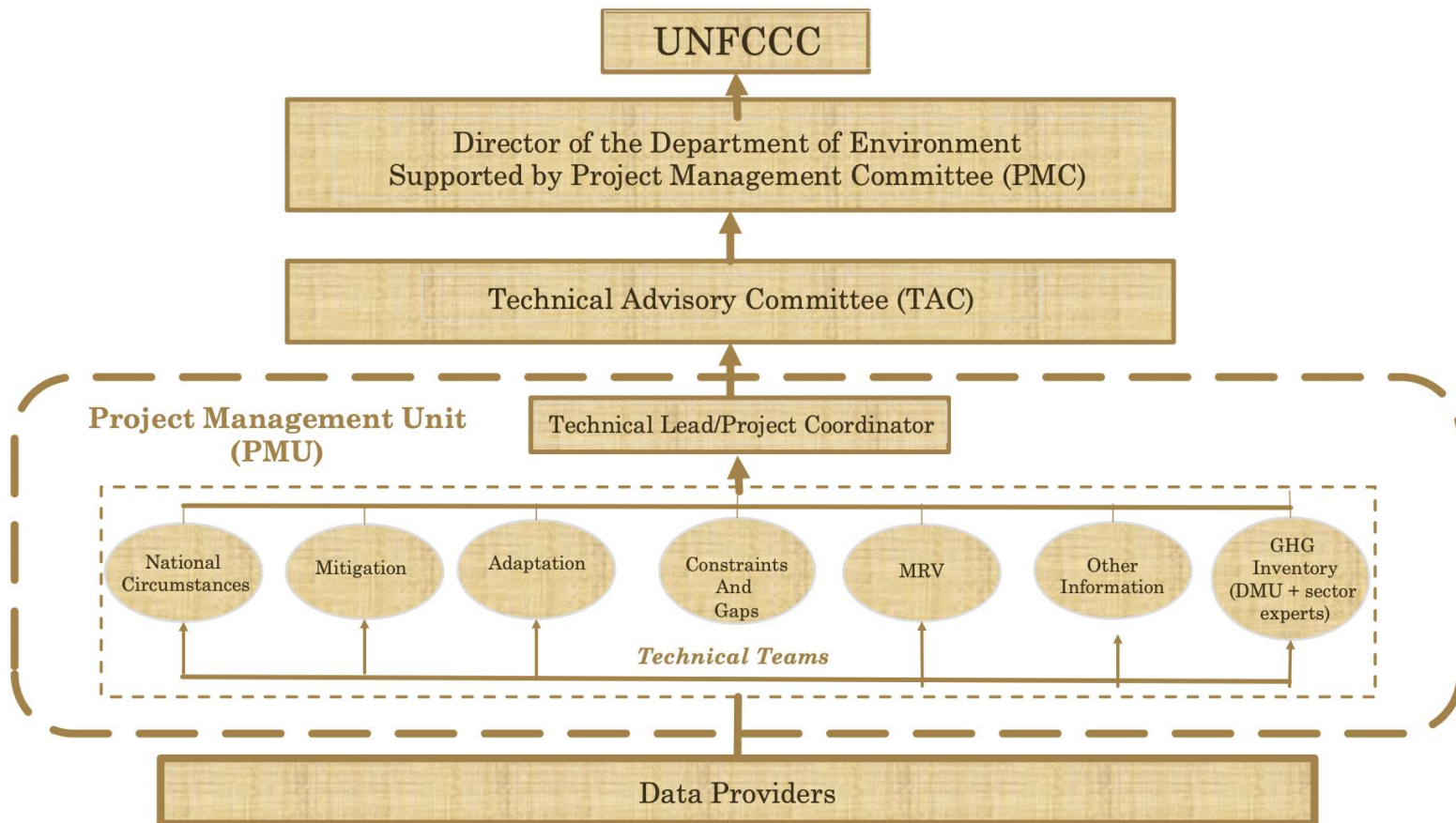
11 JUNE 2021

Presentation Outline



- ❖ Institutional Arrangements
- ❖ Main Climate Strategy and Plan
- ❖ GHG Inventory
- ❖ Mitigation Actions and Effects
- ❖ Support Needed and Received
- ❖ Transition to ETF

National Context



Main Climate Plan/Strategy



INDCs submitted in 2015

Revision of NDCs to be submitted in 2021

National Adaptation Plan (NAP) to be submitted in 2022

National Communication reports on Climate Change

Climate Change Country Programme Strategy

GHG inventory



Inventory year: 2015

Key Categories:

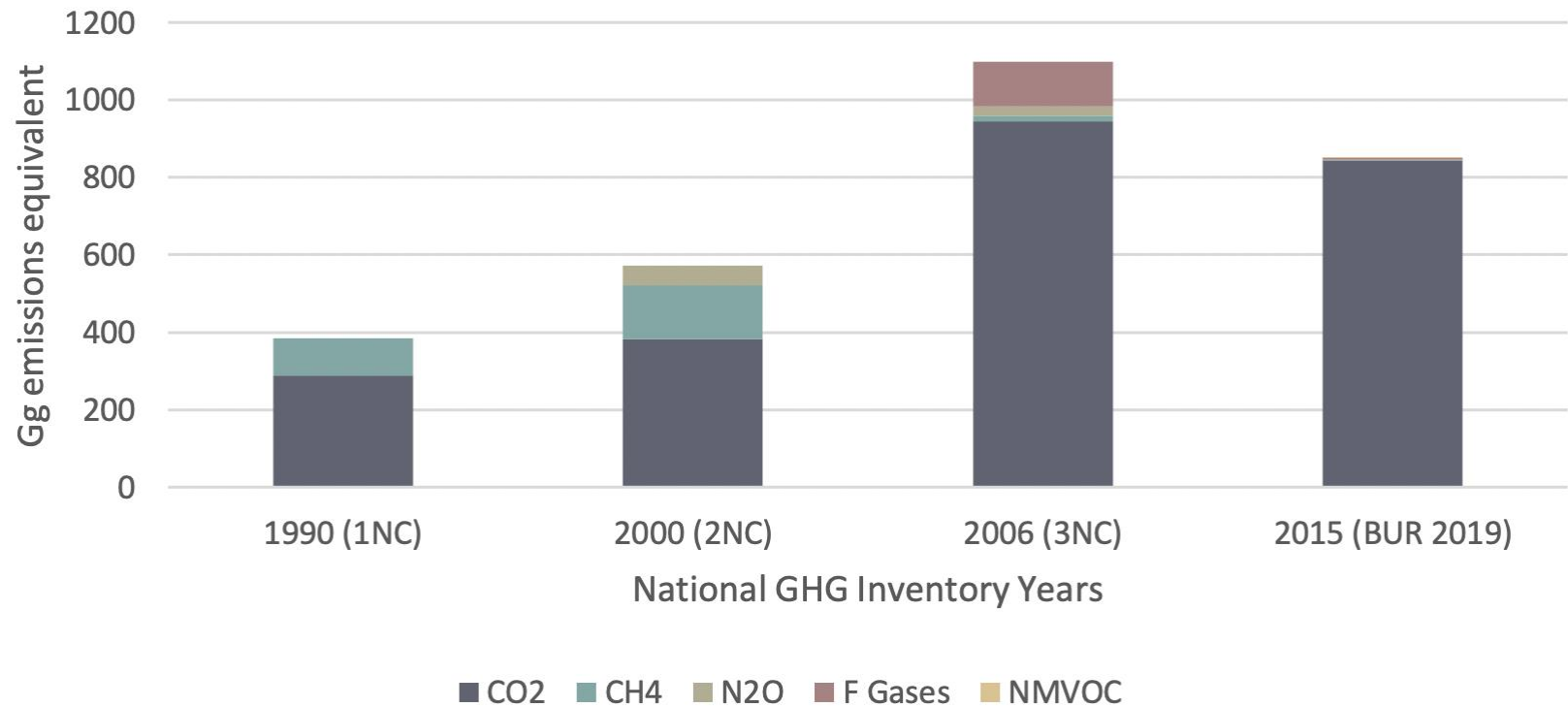
- Energy
- LULUCF

TYPE OF GAS	EMISSIONS
Carbon Dioxide (CO ₂):	844.28 Gg
Methane (CH ₄):	1.517 Gg
Nitrous Oxide (N ₂ O):	0.049 Gg
Non-methane volatile organic compounds (NMVOC):	0.035 Gg
Hydrofluorocarbons (HFC):	6.051 Gg

Total aggregate GHG emissions and removals by year and gas



Antigua and Barbuda's GHG emissions



Support Received and Needed (*finance, technology*)



Active Funders

Abu Dhabi
Fund for
Development

Green Climate
Fund (GCF)

The
Adaptation
Fund (AF)

Funds Needed

US \$450 – 670
million to meet
adaptation INDC
targets by 2030

US \$350-500 million
needed to meet
mitigation INDC
targets by 2030

Support Received and Needed (*capacity building*)



During the technical review process the TTE identified the following needs for capacity building:

- Enhancing capacity in GHG inventory experts
- Enhancing capacity of local experts to use Collect Earth
- Enhancing technical capacity of data providers on and increasing their awareness of the relevance of data to reporting commitments
- Enhancing national capacity for mitigation modelling and development of GHG emission projection scenarios that take into account the impact of mitigation actions

Transition to ETF



Strengthening of MRV System

Transitioning to BTR

Updating of NDCs

Developing NDC Implementation Plan

Building Capacity in developing GHG Inventories

Participating in the International Consultation and Analysis (ICA) Process